

Drama Hall Roof Photographs

1. This Technical Note has been prepared in support of the application for Listed Building Consent submitted to the London Borough of Richmond Upon-Thames at Hampton Court House School, Hampton Court Road. A Site Location Plan is shown in Figure 1 below.



Figure 1: Site Location Plan

Photographs

2. Photographs of the existing the drama studio roof (external) are included below to illustrate this application



Figure 2: Drama Hall Studio Roof - Externals



Figure 3: Drama Hall Studio Roof - Externals



Figure 4: Drama Hall Studio Roof - Externals

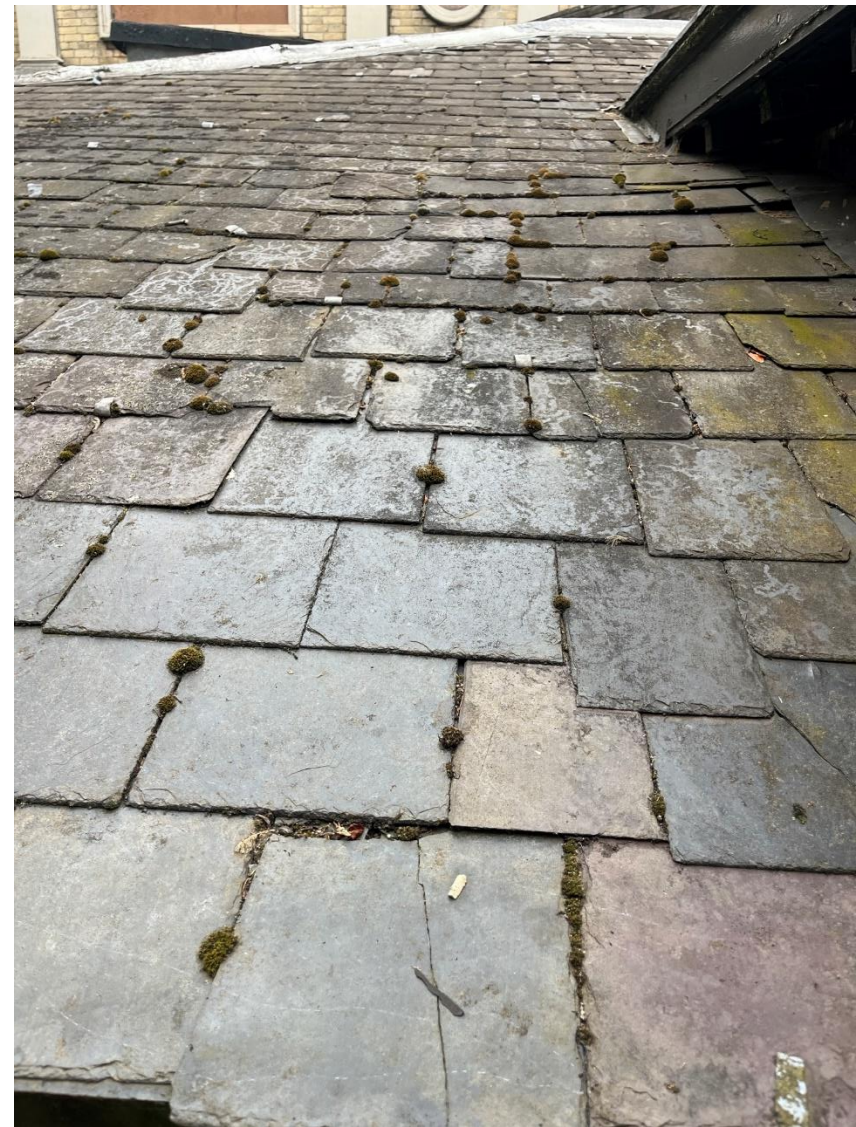


Figure 5: Drama Hall Studio Roof - Externals

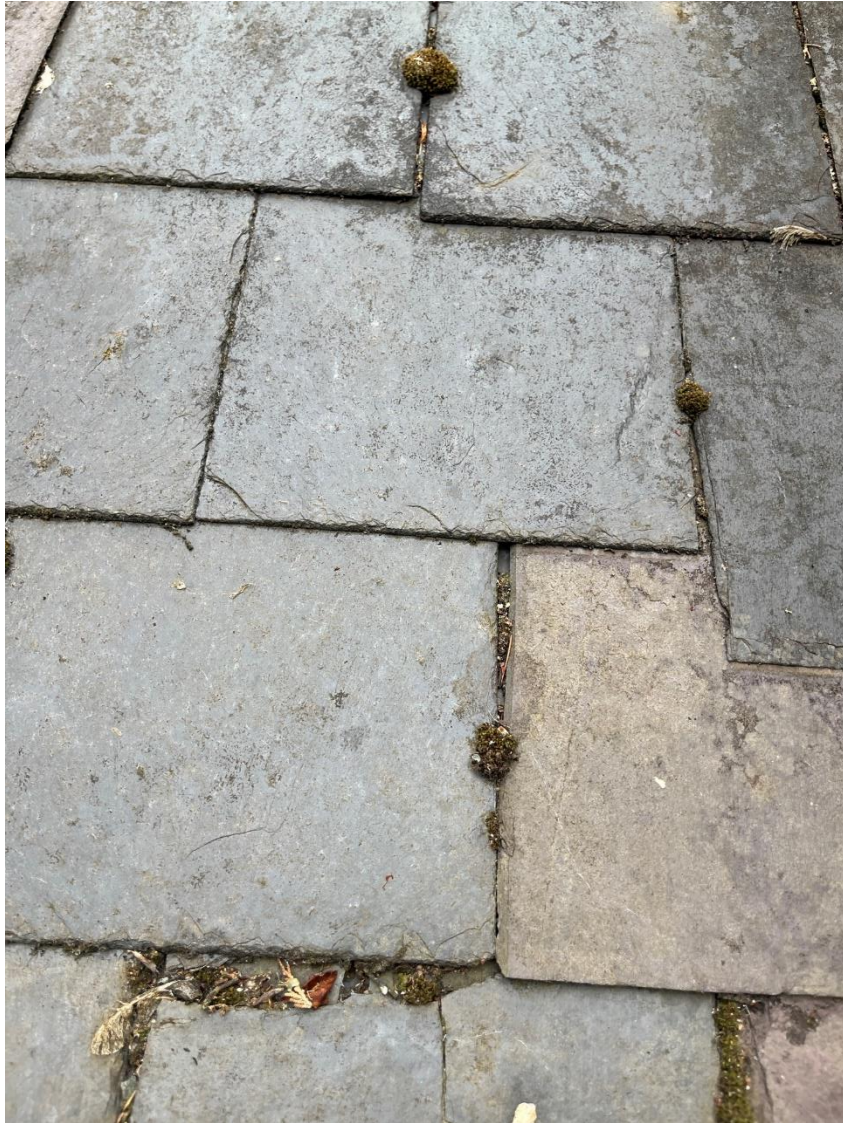


Figure 6: Drama Hall Studio Roof - Externals