

Hip to Gable Volume Calculation:

$10000\text{mm} \times 4345\text{mm} \times 3700\text{mm} / 6 = 26.79 \text{ cubic metres}$

Less existing Dutch hip:

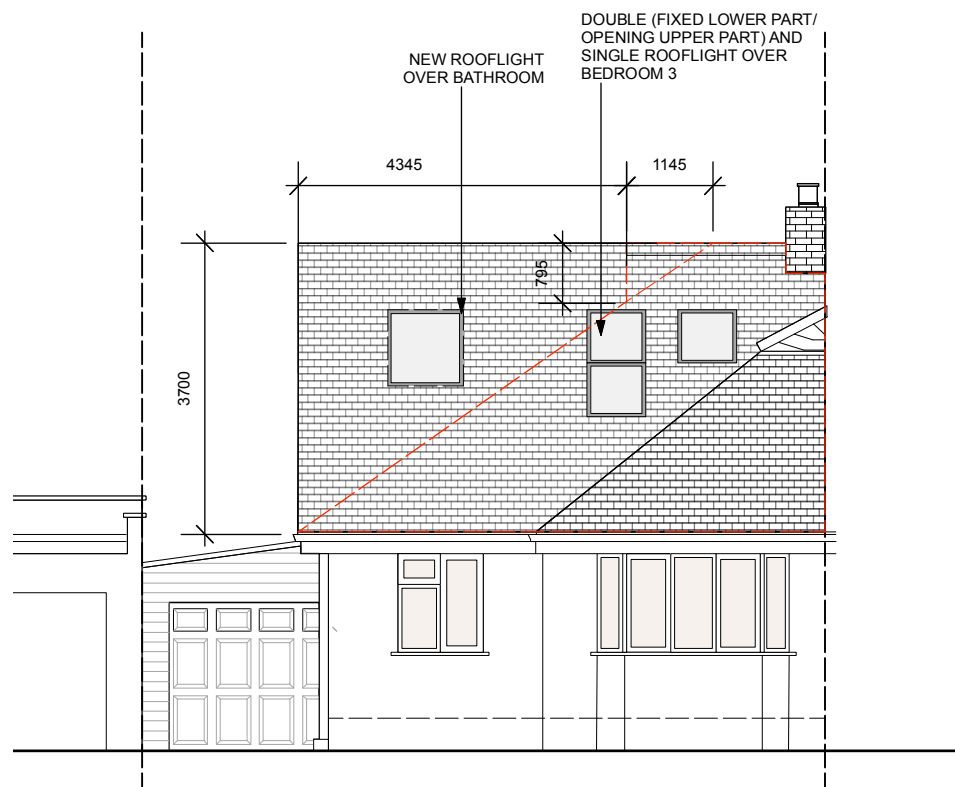
$1900\text{mm} \times 1145\text{mm} \times 795\text{mm} / 6 = 0.288 \text{ cubic metres}$

$26.79 - 0.288 = 26.50 \text{ cubic metres}$

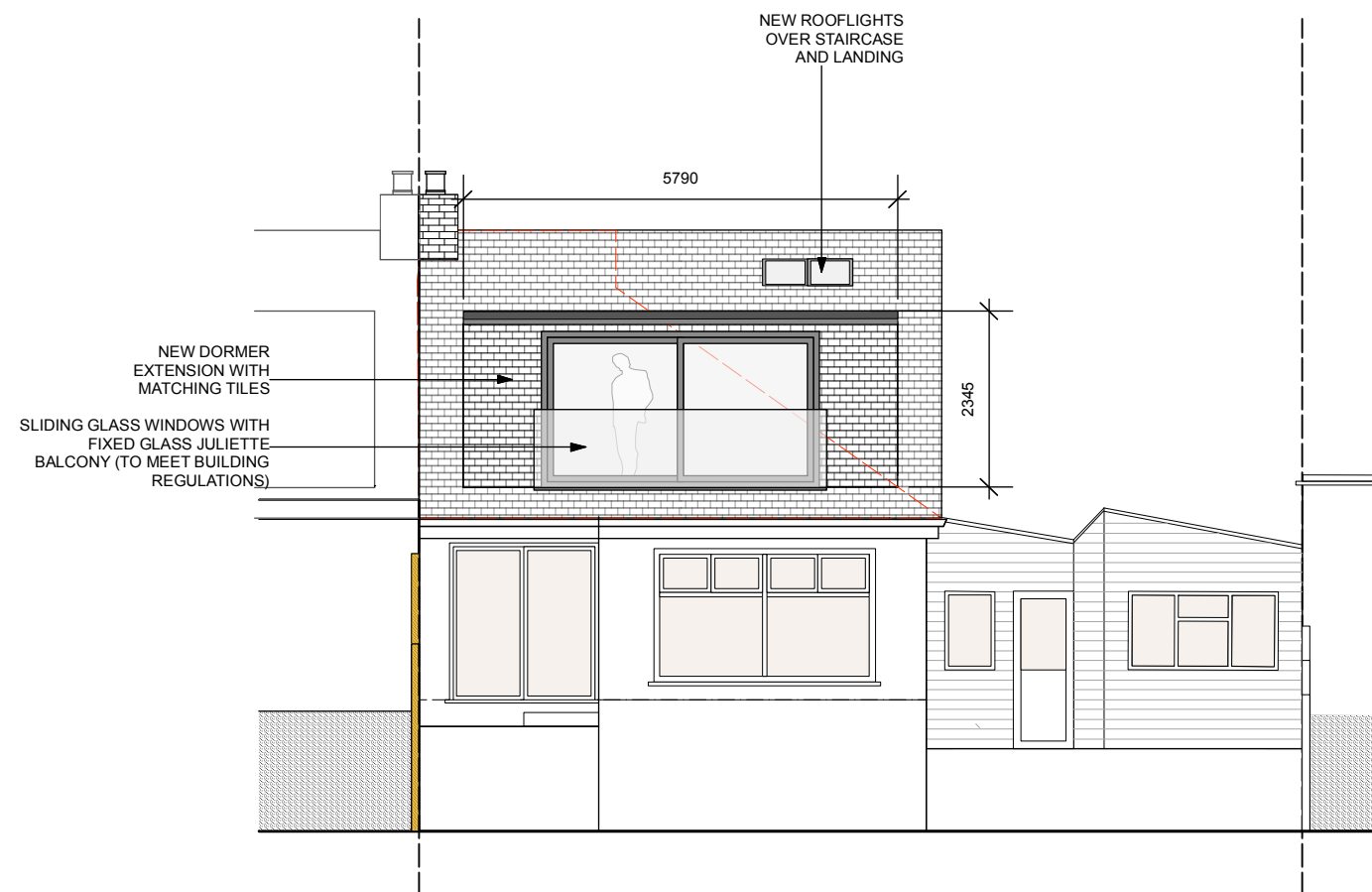
Dormer Volume Calculation:

$5790\text{mm} \times 3175\text{mm} \times 2345\text{mm} \times 0.5 = 21.55 \text{ cubic metres}$

Hip to Gable Volume + Dormer Volume = 48.05 cubic metres



PROPOSED FRONT ELEVATION AA



PROPOSED REAR ELEVATION BB