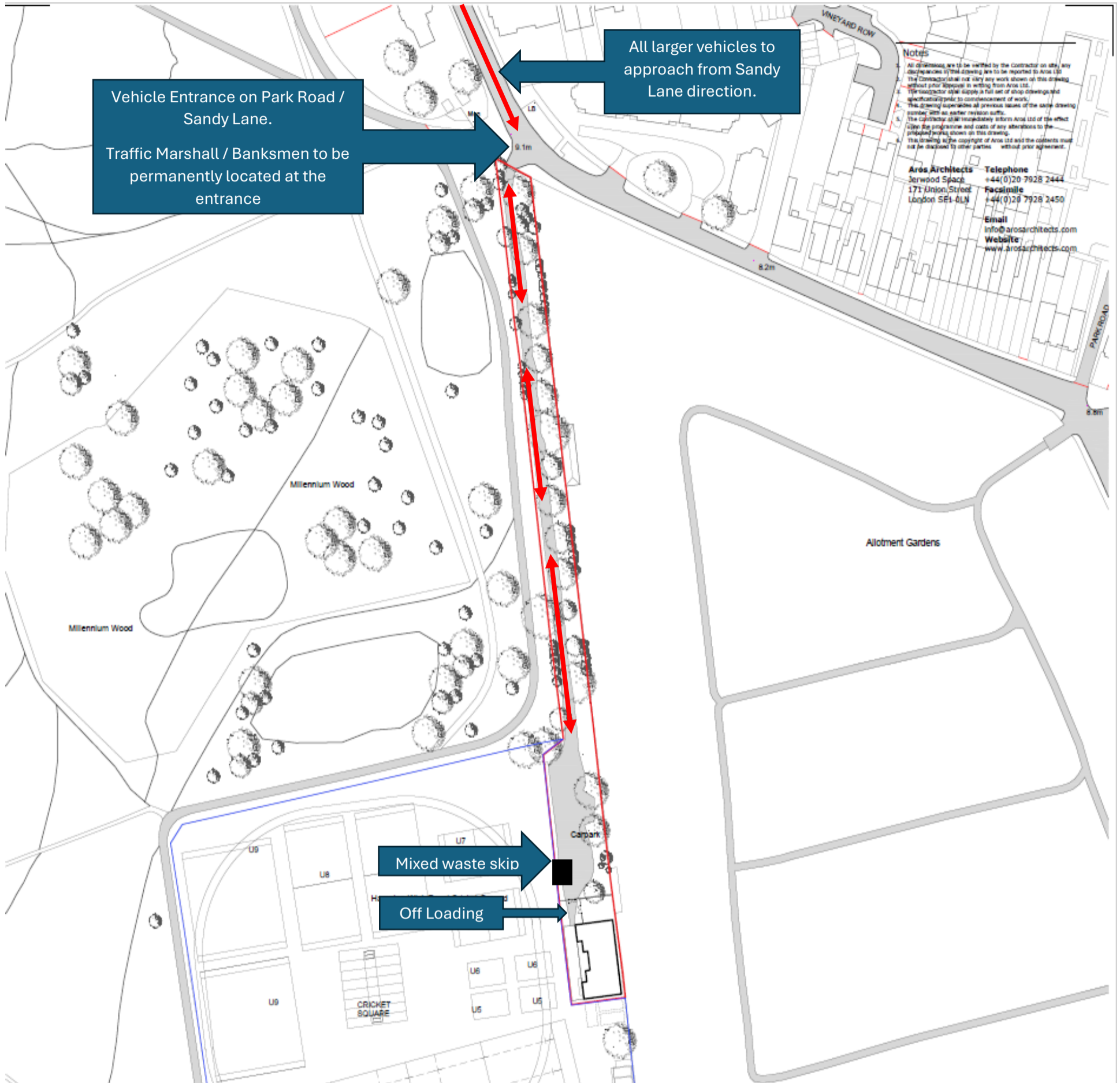


# Hampton Wick Royal Cricket Club Site Access / Directions Plan



1. Entrance to Site must be made via The Park Entrance Gates from the Sandy Lane direction. This will aid the turning in of the vehicles.
2. No delivery vehicles will be permitted to enter from the Park Road direction.
3. All deliveries must be pre-booked and Site Management must be notified 15 min before arrival, as all vehicles larger than standard transit must be escorted from park gates to the site compound.
4. On entering the Park continue 0.2 m along the tree lined avenue to the off loading area.
5. Once the vehicle has reached the site they will stop adjacent to the site welfare in a designated off-loading area that is of sufficient size to allow for turning to enable the vehicles to exit the site in a forward gear and released safely onto Sandy Lane.
6. Only one vehicle will be allowed onto the site at a time.

Site Contact Details: TBC