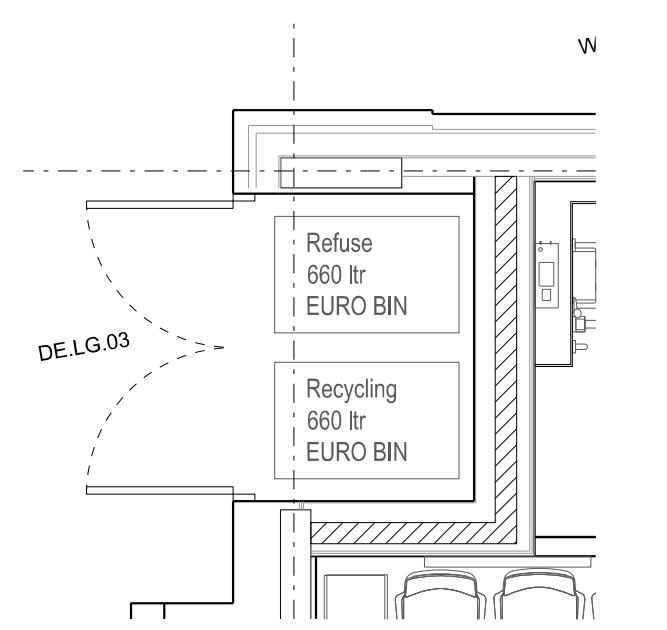
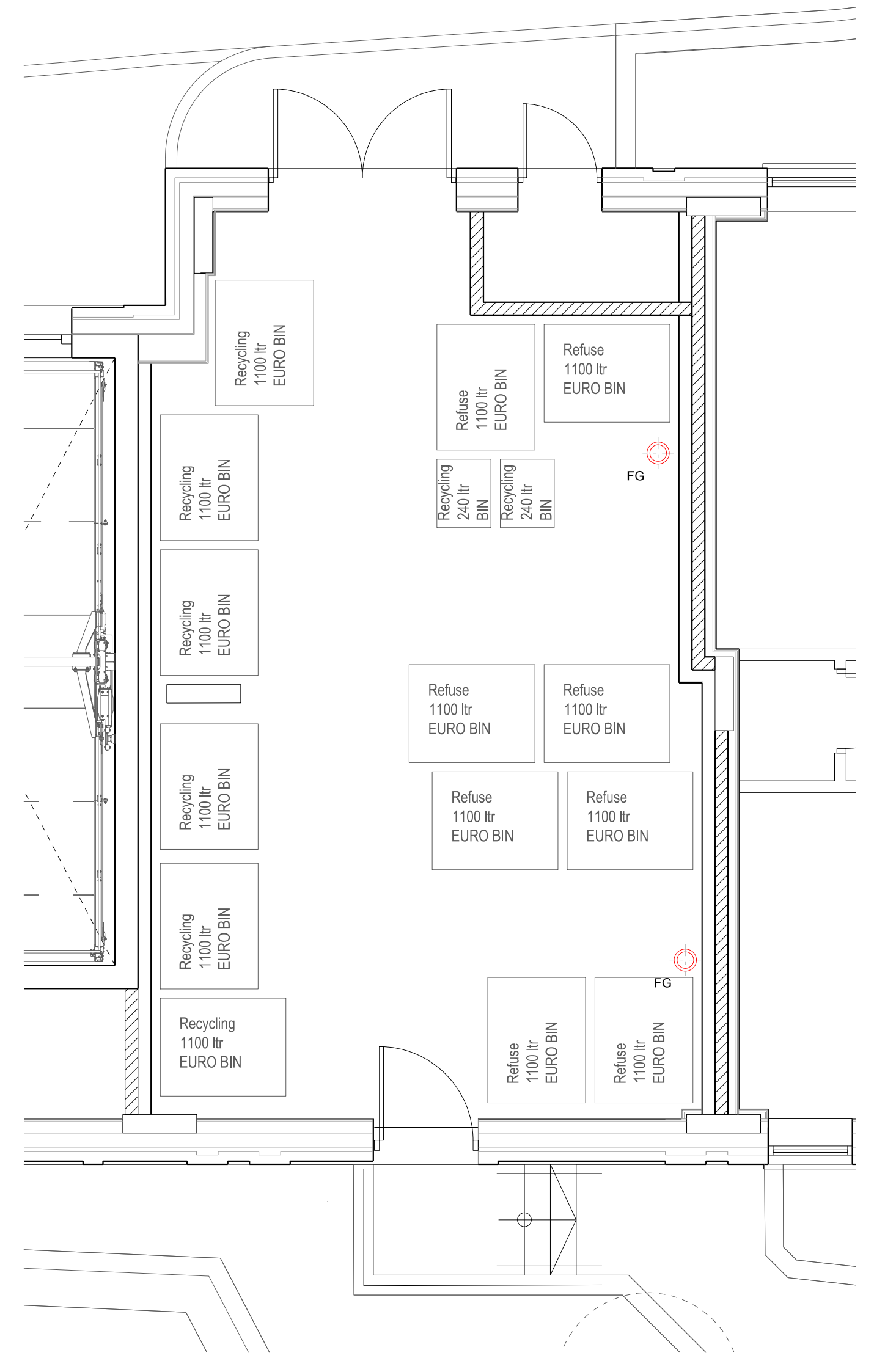




General Arrangement Plan  
1:200

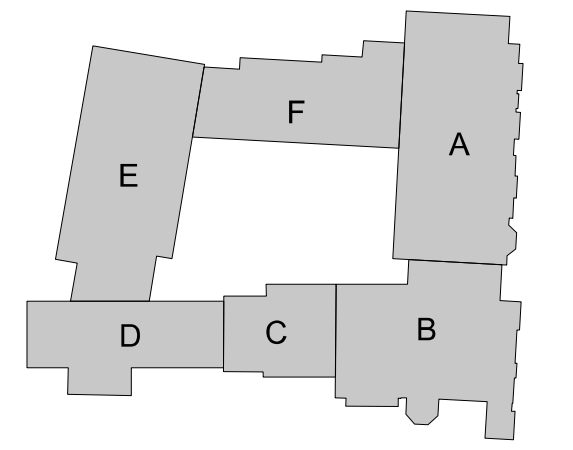
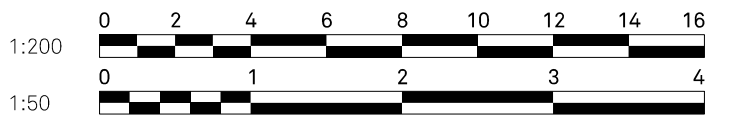


Health Care Refuse Store Plan  
1:50



Residential Refuse Store Plan  
1:50

Notes  
This document is © Falconer Chester Hall Limited.  
All drawing measurements shall not be obtained by scaling. Any discrepancies on this document to be immediately reported to the Architect. Verify all dimensions and levels prior to construction. This Document shall be read in conjunction with related documents, specifications and associated models.



KEY PLAN - Scale 1:1000

- KEY
- Refuse Access
  - Refuse Collection Route
  - Residential Refuse Store
  - Health Care Refuse Store
  - Refuse Collection Point
  - Residents access to courtyard

Residential Waste

The Council describes the frequency of waste collections and the required capacity depending on the size of the development. Following these principles a dedicated refuse store is proposed on the upper ground level within Building F alongside the private road offering direct access to residents and collection services. Alternative access to the refuse store is also provided through the new courtyard reducing the travel distance for residents on the building along Kew Foot Road.

Residential Waste Storage Requirements			
No. Bedrooms	Dwellings	Weekly storage requirement per unit (litres)	Storage Requirement (litres)
Number of 1 bed dwellings	30	70	2100
Number of 2 bed dwellings	33	140	4620
Number of 3 bed dwellings	5	210	1050
Number of 4 bed dwellings	3	280	840
<b>Total</b>	<b>71</b>	<b>-</b>	<b>8610</b>

In addition, within the LBRU7 Local Plan, reference can be made to the Refuse and Recycling Storage Requirements, SPD (April 2015) outlining 6x1100L Euro bins are required for 46-70 number of households. Due to the development having 71 number of households, reference has also been made to the requirements of 2x240L bins per 3-5 number of households.

In total the scheme will provide the following number of bins:  
 6x 1100L Euro Bins for wet waste ( 6600L Total )  
 6x 1100L Euro Bins for dry waste ( 6600L Total )  
 2x 240L Euro Bins for dry waste ( 7080L Total )

NHS Waste  
 A separate refuse store containing the bins destined for the waste disposal from the new NHS centre is located on the healthcare premise with a direct access from Evelyn Road which will count with a separate collection strategy as part of the Waste Management Plan from NHSBSA.

Referring to Royal Haskoning Delivery and servicing plan 29 November 2018 - PB0541PRP1811291647, submitted as part of the full planning application 18/3950/FUL, following guidance from Paragraph 2.1.2 of the LBRU7 refuse and recycling storage requirements it is anticipated that the provision of 1.3 cubic metres of waste storage facility (1300 litres) is required for the proposed health centre, of which 50% should be dedicated dry waste.

In total the scheme will provide the following number of bins:  
 1x 660L Euro Bins for wet waste ( 660L Total )  
 1x 660L Euro Bins for dry waste ( 660L Total )

Note:  
 Refer to Royal Haskoning, Transport Assessment - Appendices, Appendix F - Swept Path Analysis, drawing TR11 for refuse vehicle tracking submitted under application 18/3950/FUL

P03	13.03.24	DH	PR	Calculations added
P12	05.03.24	DH	PR	Drawing updated
P01	24.01.24	DH	PR	First Issue

Rev: | Date: | By: | Chk By: | Rev Note:



London | Liverpool | Manchester | www.fcharchitects.com | +44(0)151 243 5800

Project Title		Royal Hospital Richmond	Rev
Client		UKJ Richmond Limited	P03
Drawing Title		Refuse Strategy	DH
Drawing No.		P20103-FCH-XX-XX-DR-A-3406	PR
Status	Issue suitable for:	Date	Drawn By
S3	Review & Comment	12.02.21	DH
Job No.	Drawing Stage	Scale	Checked By
P20-103	construction	as drawing@A1	PR