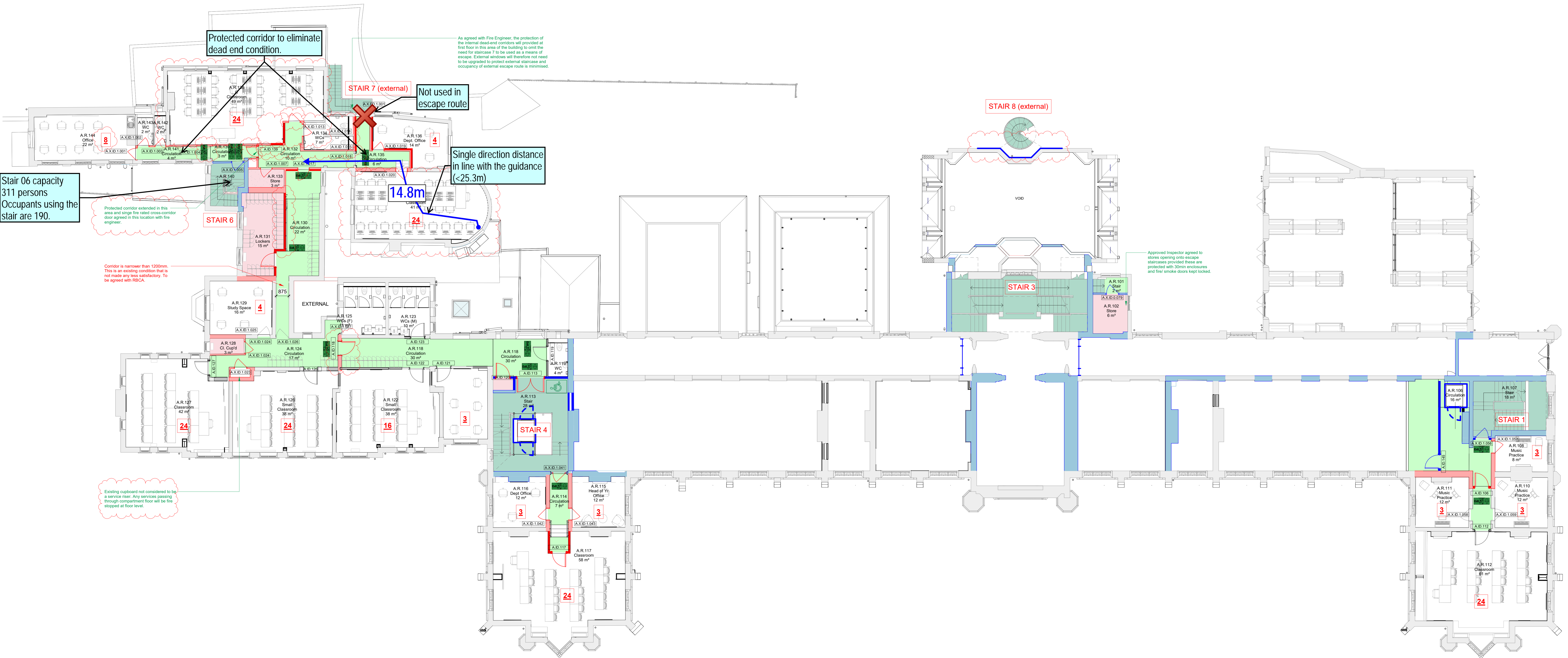


Fire Strategy Legend	
<span style="color: red;">■</span>	30min FR Separation - NEW
<span style="color: blue;">■</span>	60min FR Separation - NEW
<span style="color: red;">■</span>	30min FR Separation - EXISTING Existing walls to provide 30 minutes fire resistance - survey & repair as required
<span style="color: blue;">■</span>	60min FR Separation - EXISTING Existing walls to provide 60 minutes fire resistance - survey & repair as required
<span style="color: red;">■</span>	FD30 Door - NEW FD30 indicates smoke seals are required
<span style="color: blue;">■</span>	FD60 Door - NEW FD60 indicates smoke seals are required
<span style="color: red;">■</span>	FD30 Door - EXISTING FD30 indicates smoke seals are required
<span style="color: blue;">■</span>	FD60 Door - EXISTING FD60 indicates smoke seals are required
<span style="color: red;">■</span>	FD30 Door - EXISTING FD30 indicates smoke seals are required
<span style="color: blue;">■</span>	FD60 Door - EXISTING FD60 indicates smoke seals are required
<span style="color: red;">■</span>	Room Occupancy Call quantities are based on the occupancies shown and these must not be exceeded.
<span style="color: green;">■</span>	900 x 1400mm Wheelchair Refuge
<span style="color: green;">■</span>	Door on hold open
<span style="color: green;">■</span>	Final exit Directional escape signage shown on plan. Final locations to be agreed with RBGA on site. Fire escape signage will follow the format type as per MEP specification or as N15.
<span style="color: green;">■</span>	Circulation
<span style="color: green;">■</span>	Circulation - Escape Stair
<span style="color: red;">■</span>	Areas of Special Fire Hazard
<span style="color: red;">■</span>	Extent of Fire Compartment - boundary to be 60mins fire resisting construction.
<span style="color: red;">■</span>	30/15 ceiling loft cavity barrier Specification: P10432B
<span style="color: blue;">■</span>	60/60 ceiling loft cavity barrier Specification: P10432B
<span style="color: red;">■</span>	60/60 smoke and fire curtain Specification: L20/65/VA
<span style="color: red;">■</span>	30/30 smoke and fire curtain Specification: L20/65/VA
<b>Compartment Sizes</b>	
<b>MB Ground Floor Area = 1986m<sup>2</sup></b>	
• Compartment GA = 657m <sup>2</sup>	
• Compartment GB = 748m <sup>2</sup>	
• Compartment GC = 580m <sup>2</sup>	
<b>MB First Floor Area = Below 800m<sup>2</sup></b>	
• No further compartmentation required	
<b>MB Second Floor Area = 1426m<sup>2</sup></b>	
• Compartment ZA = 689m <sup>2</sup>	
• Compartment ZB = 737m <sup>2</sup>	
<b>MB Third Floor Area = 978m<sup>2</sup></b>	
• Compartment ZA = 610m <sup>2</sup>	
• Compartment ZB = 368m <sup>2</sup>	
<b>MB Fourth Floor Area = Below 800m<sup>2</sup></b>	
• No further compartmentation required	



REV	DESCRIPTION	DATE
P03	Revised to Client Comments	03.09.24
P02	Stage 4 Tender Issue	12.04.24
P01	Stage 4 Tender Issue	22.03.24



CLIENT  
Thomas's London Day Schools

PROJECT  
Thomas's College - Main Building

DRAWING TITLE  
MB - Fire Strategy Plan - First Floor

SCALE @ A0: 1:100

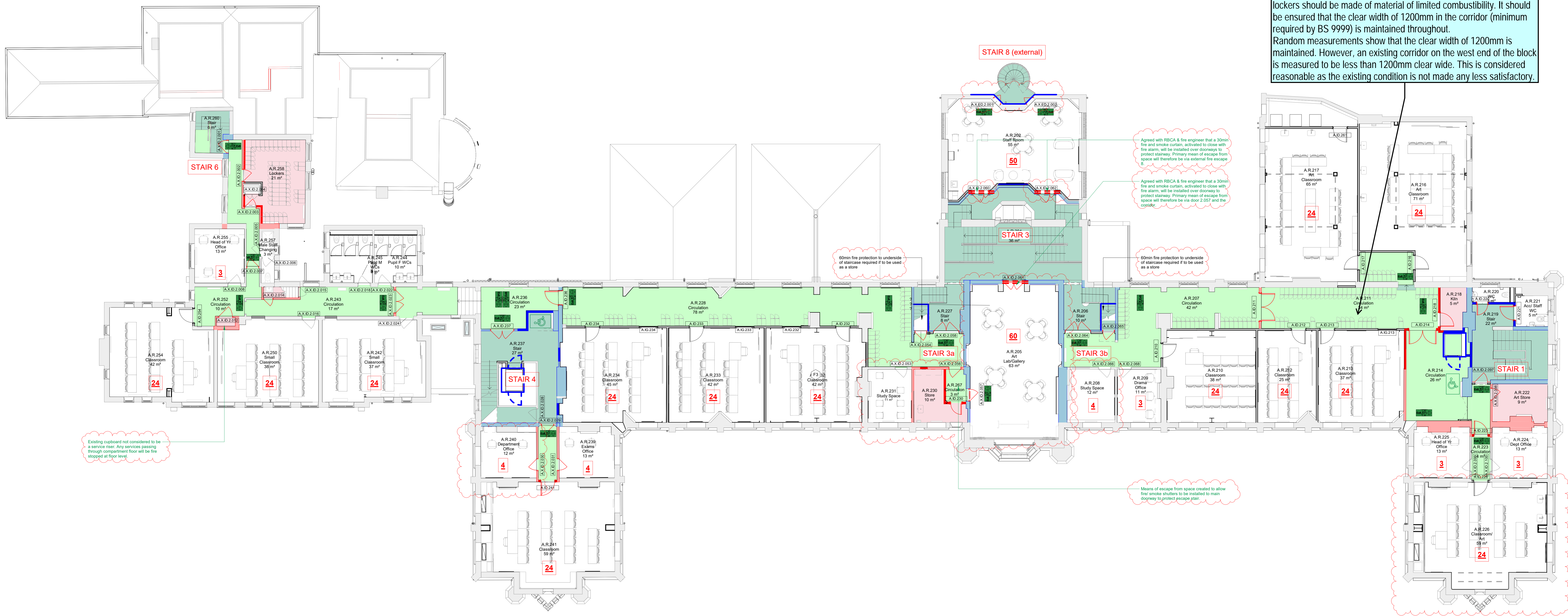
DRAWING NUMBER	REV
1714 IID   A   XX   DR   A-1602	P03



Fire Strategy Legend	
<span style="color: red;">■</span>	30min FR Separation - NEW
<span style="color: blue;">■</span>	60min FR Separation - NEW
<span style="color: red;">■</span>	30min FR Separation - EXISTING Ceiling needs to provide 30 minutes fire resistance - survey & repair as required
<span style="color: blue;">■</span>	60min FR Separation - EXISTING Ceiling needs to provide 60 minutes fire resistance - survey & repair as required
<span style="color: red;">■</span>	FD30 Door - NEW FD30 indicates smoke seals are required
<span style="color: blue;">■</span>	FD60 Door - NEW FD60 indicates smoke seals are required
<span style="color: red;">■</span>	FD30 Door - EXISTING FD30 indicates smoke seals are required. Refer to schedule for remedial work required.
<span style="color: blue;">■</span>	FD60 Door - EXISTING FD60 indicates smoke seals are required. Refer to schedule for remedial work required.
<span style="color: red;">■</span>	Room Occupancy Call quantities are based on the occupancies shown and these must not be exceeded.
<span style="color: green;">■</span>	900 x 1400mm Wheelchair Refuge
<span style="color: green;">■</span>	Door on hold open
<span style="color: green;">■</span>	Final exit Directional escape signage shown on plan. Final locations to be agreed with RBGA on site. Fire escape signage will follow the format type as per MEP specification or as N15.
<span style="color: green;">■</span>	Circulation
<span style="color: green;">■</span>	Circulation - Escape Stair
<span style="color: red;">■</span>	Areas of Special Fire Hazard
<span style="color: red;">■</span>	Extent of Fire Compartment - boundary to be 60mins fire resisting construction
<span style="color: red;">■</span>	3015 ceiling loft cavity barrier Specification: F10432A
<span style="color: blue;">■</span>	60/60 ceiling loft cavity barrier Specification: F10432B
<span style="color: blue;">■</span>	60/60 smoke and fire curtain Specification: L20/510/5
<span style="color: red;">■</span>	60/30 smoke and fire curtain Specification: L20/510/5

Compartment Sizes	
MB Ground Floor Area = 1986m <sup>2</sup>	• Compartment GA = 657m <sup>2</sup>
	• Compartment GB = 748m <sup>2</sup>
	• Compartment GC = 590m <sup>2</sup>
MB First Floor Area = Below 800m <sup>2</sup>	• No further compartmentation required
MB Second Floor Area = 1426m <sup>2</sup>	• Compartment ZA = 699m <sup>2</sup>
	• Compartment ZB = 737m <sup>2</sup>
MB Third Floor Area = 978m <sup>2</sup>	• Compartment 2A = 610m <sup>2</sup>
	• Compartment 2B = 368m <sup>2</sup>
MB Fourth Floor Area = Below 600m <sup>2</sup>	• No further compartmentation required

General - If these are new lockers the condition is made less satisfactory than the existing. In order to overcome the issue, the lockers should be made of material of limited combustibility. It should be ensured that the clear width in the corridor (minimum required by BS 9999) is maintained throughout. Random measurements show that the clear width of 1200mm is maintained. However, an existing corridor on the west end of the block is measured to be less than 1200mm clear wide. This is considered reasonable as the existing condition is not made any less satisfactory.



Existing cupboard not considered to be a service riser. Any services passing through compartment floor will be fire stopped at floor level.

60min fire protection to underside of staircase required if to be used as a store

Agreed with RBGA & fire engineer that a 30min fire and smoke curtain, activated to close with fire alarm, will be installed over doorways to protect stairway. Primary means of escape from space will therefore be via external fire escape.

Agreed with RBGA & fire engineer that a 30min fire and smoke curtain, activated to close with fire alarm, will be installed over doorways to protect stairway. Primary means of escape from space will therefore be via door 2.057 and the corridor.

Means of escape from spaces created to allow final smoke shutters to be installed to main doorway to protect escape stair.

REV	DESCRIPTION	DATE
P03	Revised to Client Comments	03.09.24
P02	Stage 4 Tender Issue	12.04.24
P01	Stage 4 Tender Issue	22.03.24

**IID**  
15 Princes Street  
London W1R 8JL  
Tel: 020 7746 0000  
www.iid.co.uk

CLIENT  
Thomas's London Day Schools

PROJECT  
Thomas's College - Main Building

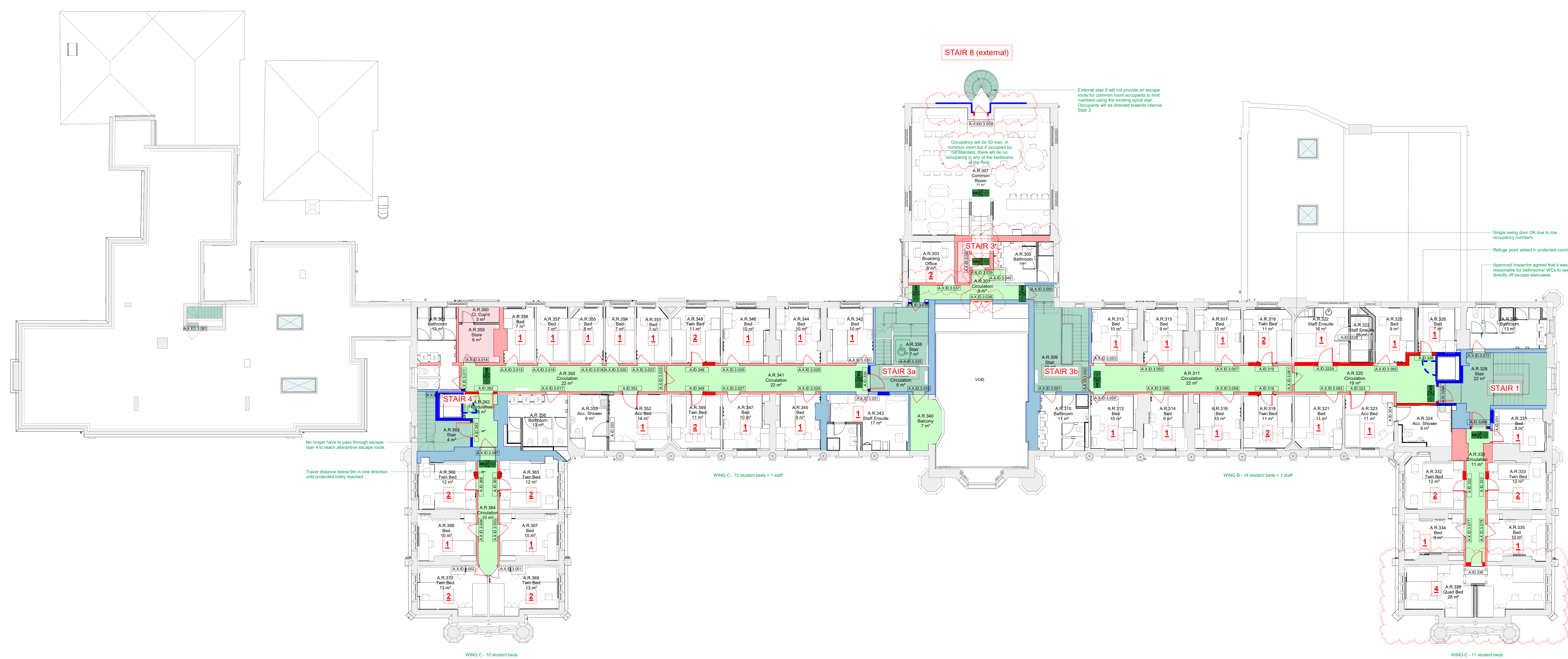
DRAWING TITLE  
MB - Fire Strategy Plan - Second Floor

SCALE @ A0: 1:100

DRAWING NUMBER	REV
1714 IID A XX DR A-1603	P03



Fire Strategy Legend	
	30min FR Separation - NEW
	60min FR Separation - NEW
	30min FR Separation - EXISTING Existing walls to provide 30 minutes fire resistance - survey & repair as required
	60min FR Separation - EXISTING Existing walls to provide 60 minutes fire resistance - survey & repair as required
	FD30 Door - NEW FD30s indicates smoke seals are required
	FD60 Door - NEW FD60s indicates smoke seals are required
	FD30 Door - EXISTING FD30s indicates smoke seals are required
	FD60 Door - EXISTING FD60s indicates smoke seals are required
	FD60 Door - EXISTING Refer to schedule for remedial work required
	Room Occupancy Call quantities are based on the occupancies shown and these must not be exceeded.
	900 x 1400mm Wheelchair Refuge
	Door on hold opener
	Final exit Directional escape signage shown on plan. Final locations to be agreed with RBCA on site. Fire escape signage will follow the format type as per MEP specification or as N15.
	Circulation
	Circulation - Escape Stair
	Areas of Special Fire Hazard
	Extent of Fire Compartment - boundary to be 60mins fire resisting construction
	30/15 ceiling loft cavity barrier Specification: P10432A
	60/60 ceiling loft cavity barrier Specification: P10432B
	60/60 smoke and fire curtain Specification: L20510A
	60/30 smoke and fire curtain Specification: L20510B
<b>Compartment Sizes</b>	
<b>MB Ground Floor Area = 1986m<sup>2</sup></b>	
• Compartment GA = 657m <sup>2</sup>	
• Compartment GB = 748m <sup>2</sup>	
• Compartment GC = 590m <sup>2</sup>	
<b>MB First Floor Area = Below 800m<sup>2</sup></b>	
• No further compartmentation required	
<b>MB Second Floor Area = 1426m<sup>2</sup></b>	
• Compartment ZA = 689m <sup>2</sup>	
• Compartment ZB = 737m <sup>2</sup>	
<b>MB Third Floor Area = 978m<sup>2</sup></b>	
• Compartment ZA = 610m <sup>2</sup>	
• Compartment ZB = 368m <sup>2</sup>	
<b>MB Fourth Floor Area = Below 600m<sup>2</sup></b>	
• No further compartmentation required	



No longer have to pass through escape stair 4 to reach alternative escape route.

Travel distance below 9m in one direction until protected lobby reached.

**STAIR 8 (external)**

External stair 8 will not provide an escape route for common room occupants to limit numbers using the existing spiral stair. Occupants will be directed towards internal Stair 3.

Occupancy will be 60 max. in common room but if occupied by 200 boarders, there will be no occupancy in any of the bedrooms on any floor.

Single swing door OK due to low occupancy numbers.

Refuge point added in protected corridor.

Approved Inspector agreed that it was reasonable for bathrooms/WCs to open directly off escape staircases.

P03	Revised to Client Comments	01/03/24
P02	Stage 4 Tender Issue	12/04/24
P01	Stage 4 Tender Issue	22/03/24



CLIENT  
Thomas's London Day Schools

PROJECT  
Thomas's College - Main Building

DRAWING TITLE  
MB - Fire Strategy Plan - Third Floor

SCALE @ A0: 1:100

DRAWING NUMBER	REV
1714 IID A XX DR A-1604	P03