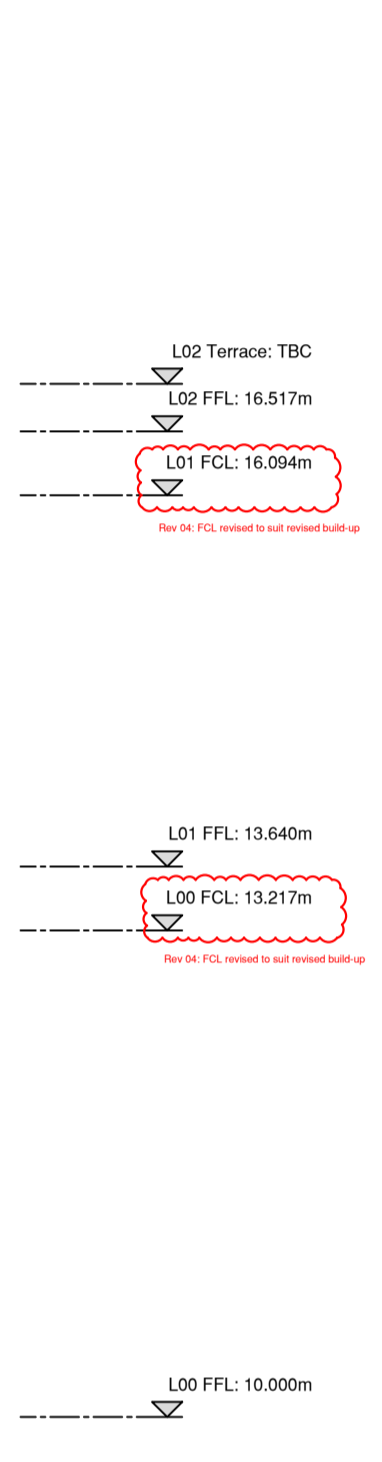
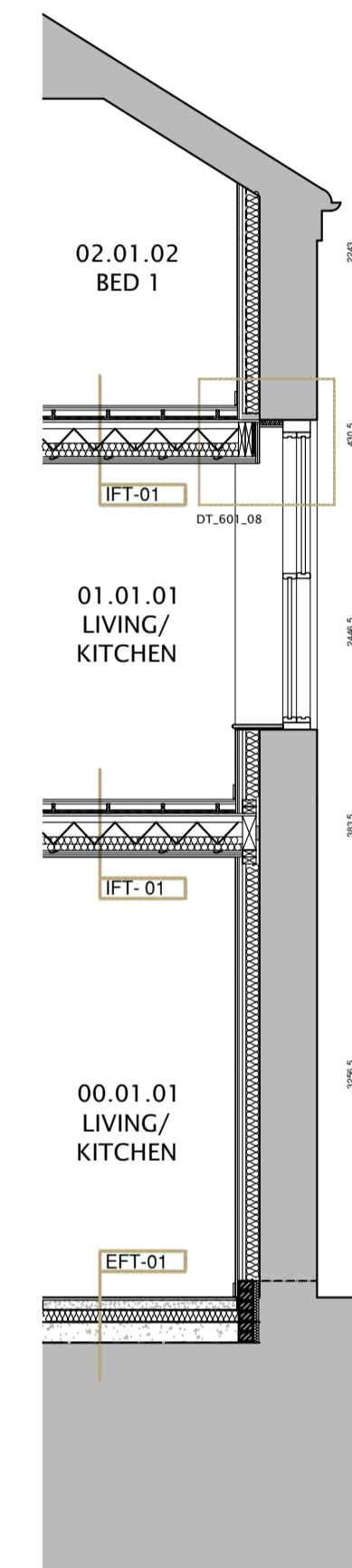
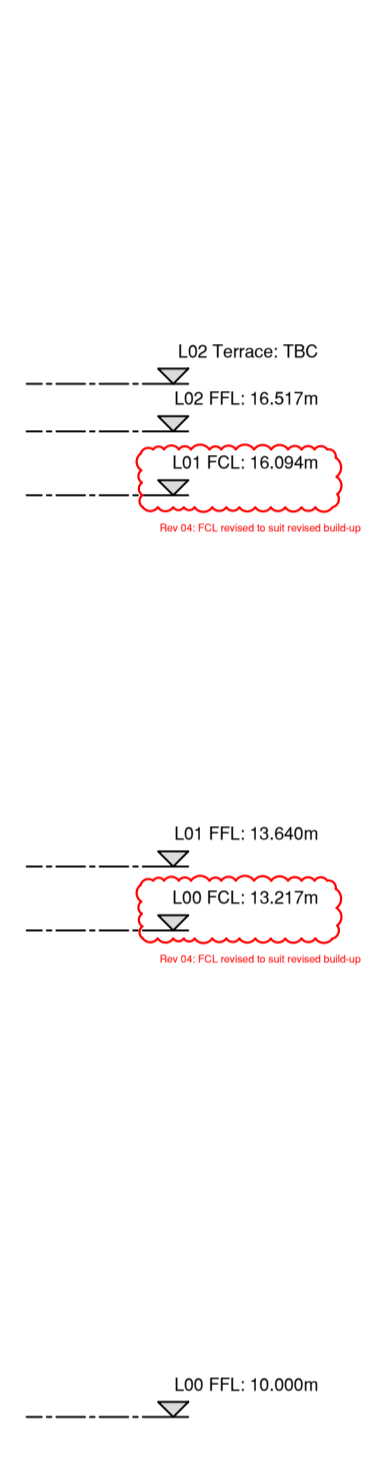
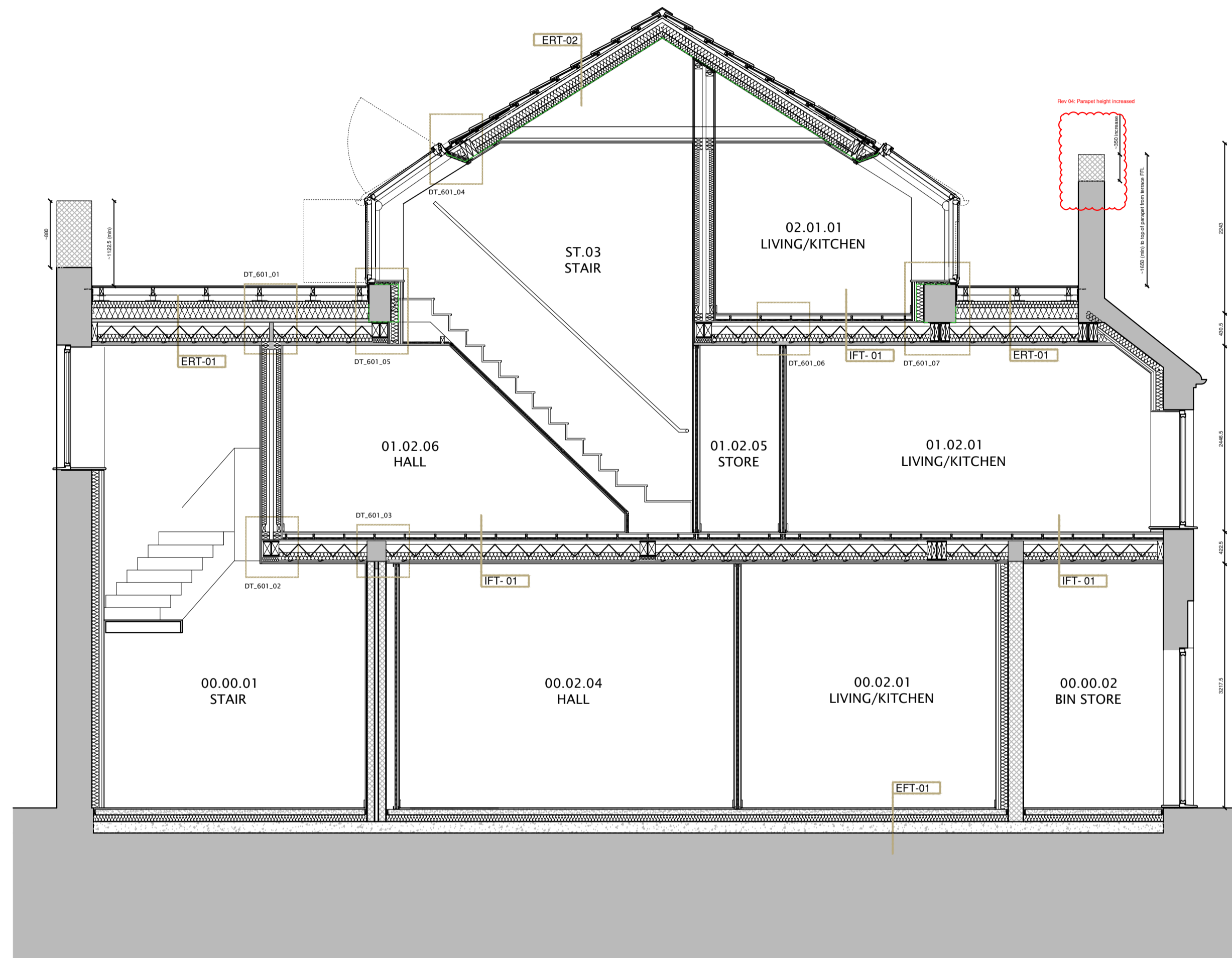


CLIENT	
Blenheim Land Ltd	
PROJECT NAME	
17 Park Road, Hampton Wick	
SITE ADDRESS	
17 Park Road, Hampton Wick, London, KT1 4AS	
DRAWING TITLE	
Proposed GA Section	
DRAWING NUMBER	REVISED
0002_00_001	04
STAGE OUTCOME	STAGE
BUILDING CONTROL	04
PROJECT LEAD	SCALE
CPD	A1
PAPER SIZE	A1
0.1	1.0
1.0	2.0
2.0	3.0
3.0	4.0

REV.	DATE	UPDATES	DRAWN
01	16.12.22	Issued for information	RS
02	20.01.23	Issued for information - minor to window details	RS
03	24.02.23	Single 4 issue	RS
04	27.07.23	Single 4 issue - updated	RS
05	09.08.24	Single 4 issue - updated	RS



PROPOSED SOUTH ELEVATION

PROPOSED SOUTH ELEVATION

Rev 04: Section updated to suit window structural strategy

NOTES
• Please read this drawing in conjunction with all other relevant project drawings, schedules and specifications as listed on the latest Illustrate Architects Ltd drawing register

DO NOT SCALE EXCEPT FOR PLANNING PURPOSES. USE ONLY DIMENSIONS GIVEN. CONTRACTOR TO CHECK SITE DIMENSIONS AND REPORT ANY VARIATIONS OR DISCREPANCIES TO ILLUSTRATE ARCHITECTS LTD. THIS DRAWING IS COPYRIGHT OF ILLUSTRATE ARCHITECTS LTD AND MUST NOT BE REPRODUCED OR USED WITHOUT PERMISSION.