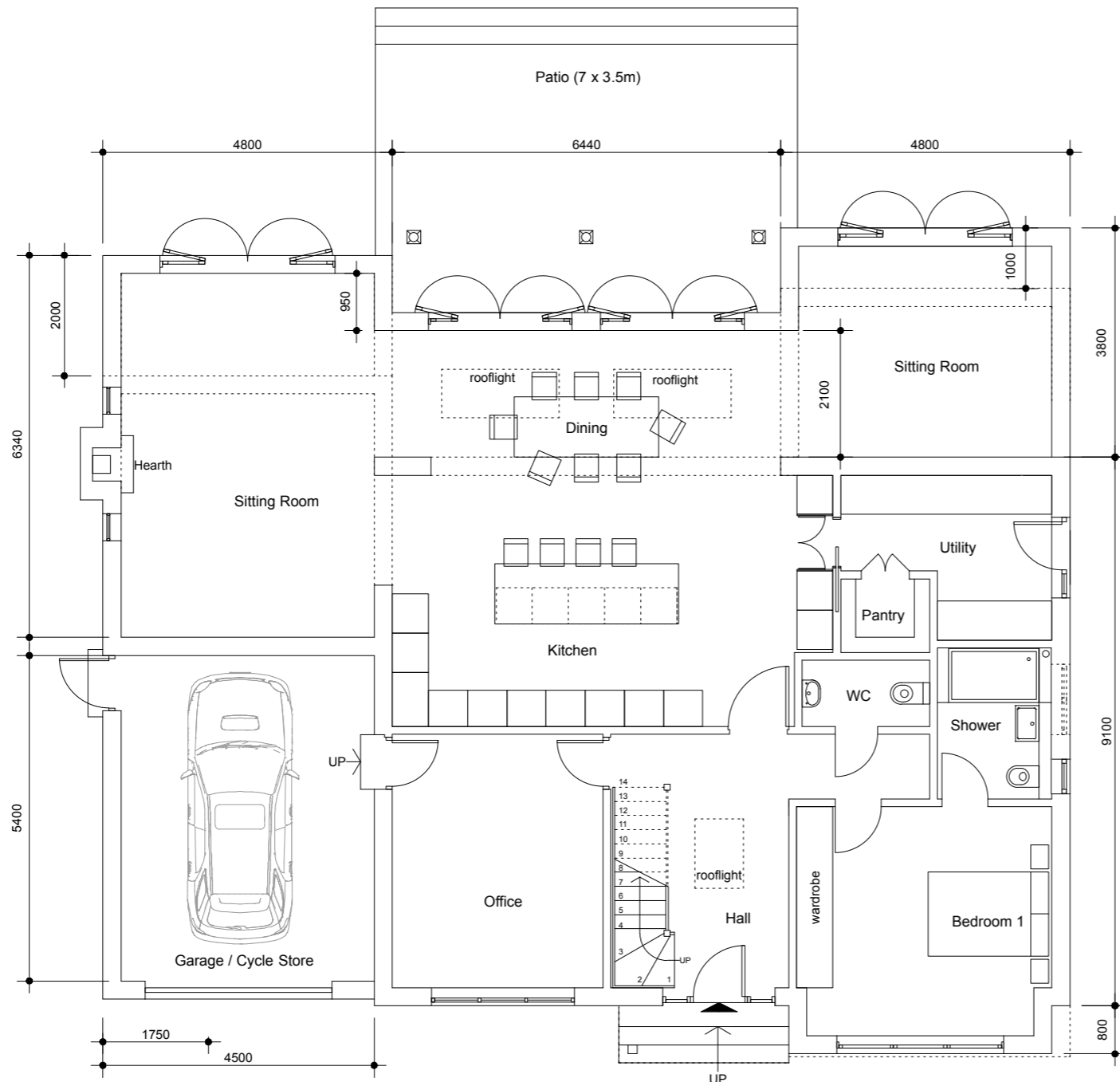
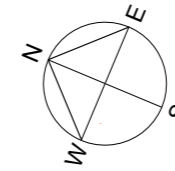


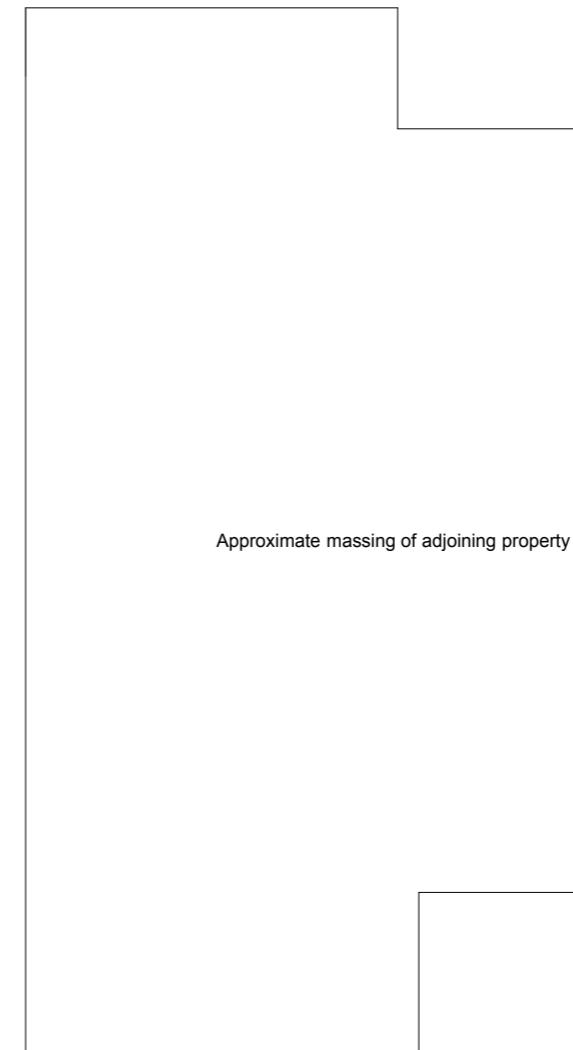
R E A R G A R D E N



F R O N T G A R D E N



O L D F A R M R O A D



T A N G L E W O O D

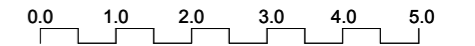
FOR PLANNING PURPOSES ONLY

To be read in conjunction with other relevant drawings and information.

Dimensions are indicative only, to be checked on site.

Any discrepancies to be brought to the attention of the architect.

Do not scale from drawings



Gross Internal Area (proposed):
 Ground Floor (including garage): 183.5m²
 First Floor (over 1.5m head height): 116.0m²
 Total gross internal area: 299.5m²

Gross Internal Area (existing):
 Ground Floor (including garage): 129m²
 Total additional gross area: 170.5m²

Rev.B: 24:06:24; Modifications to windows following client request. PD
 Rev. A: 14:06:24; General amendments following client feedback. PD

JOB Westbourne,
 Marlborough Road,
 Hampton. TW12 3RX

DWG Ground Floor Plan as proposed

JOB NO	DWG NO	DRAWN	PD
0818	PR01		

DATE	SCALE	REV	B
06/24	1:100 @A3		

dtr architects limited

94 Innes Gardens, London SW15 3AD.
 Ph: 020 87892705
 e-mail: mail@dtr.uk.com