

- Site Outline
- Search buffers in metres (m)
- ▣ Landslip (10k)
- Superficial geology (10k)
Please see table for more details.

Figure 4: Superficial Geology and Borehole Locations (BGS, 2024)
Contains Ordnance Survey data © Crown copyright and database rights 2024.
Contains British Geological Survey materials © NERC 2024.

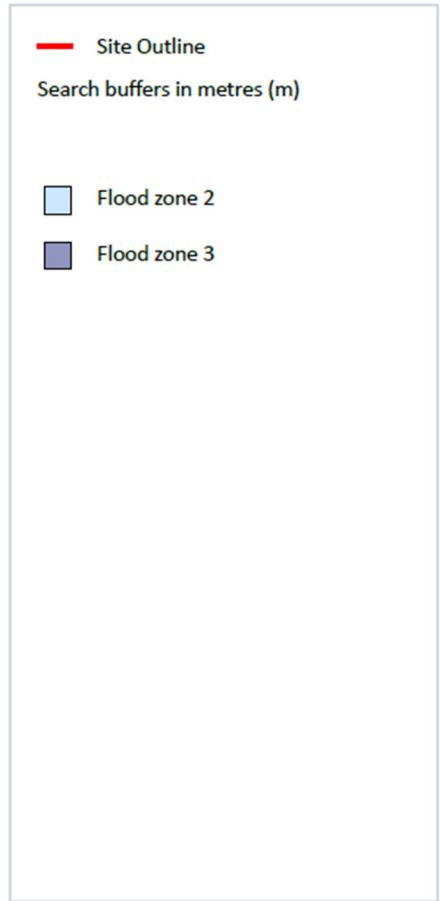
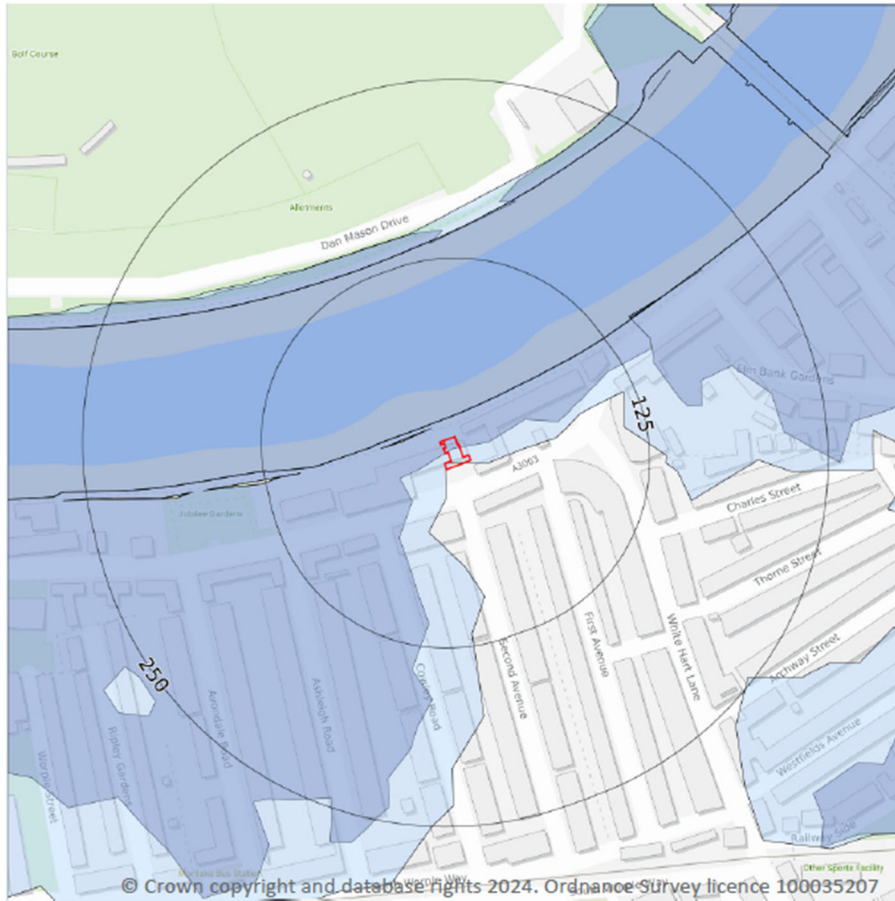


Figure 6: EA Flood Map for Planning Purposes (EA, 2024)
Contains Ordnance Survey data © Crown copyright and database rights 2024.
Environment Agency copyright and database rights 2024.

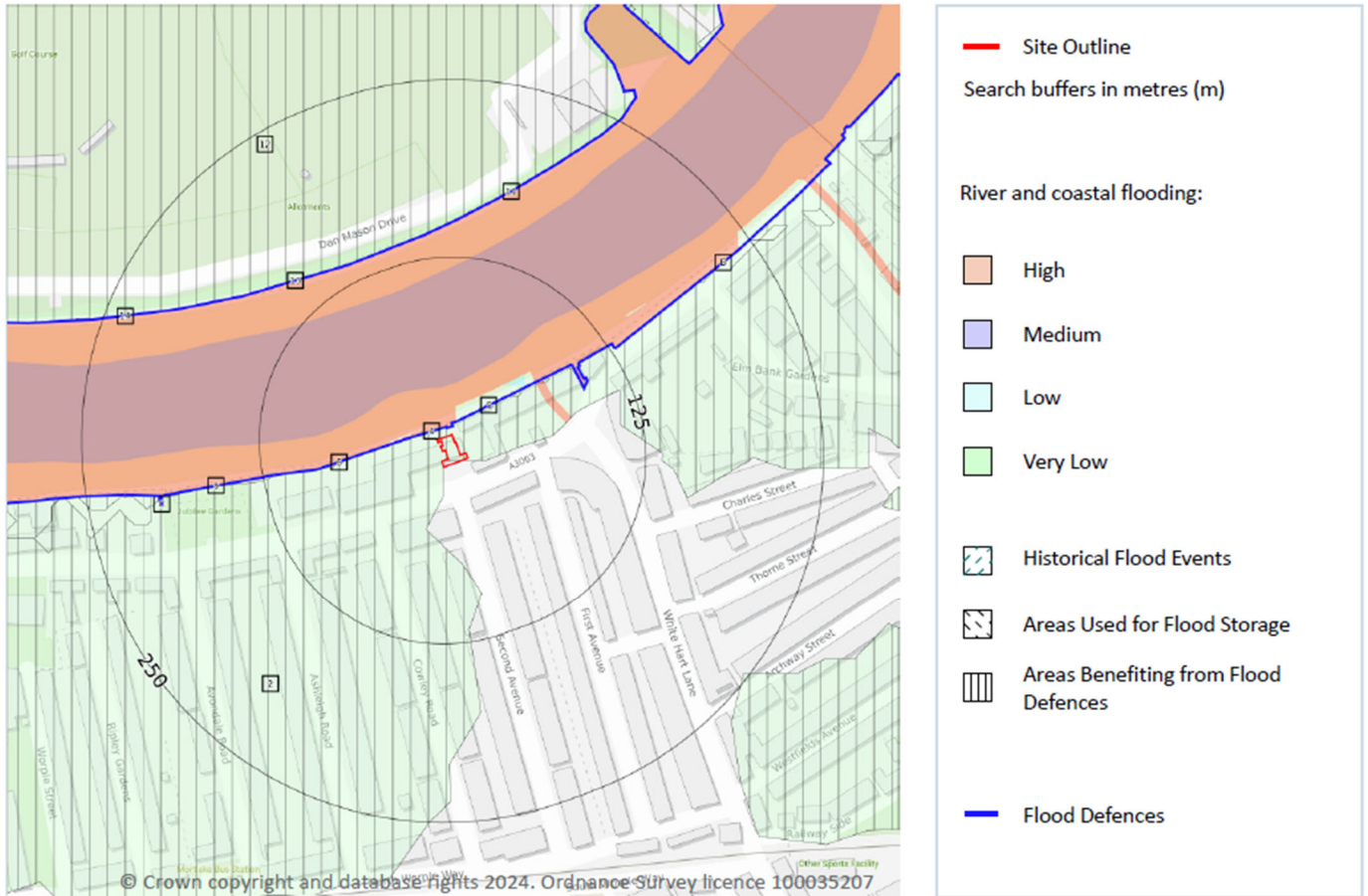


Figure 7: Risk of Flooding from Rivers and Sea, Historic Flooding and Defences map (EA, 2024)
 Contains Ordnance Survey data © Crown copyright and database rights 2024.
 Environment Agency copyright and database rights 2024.

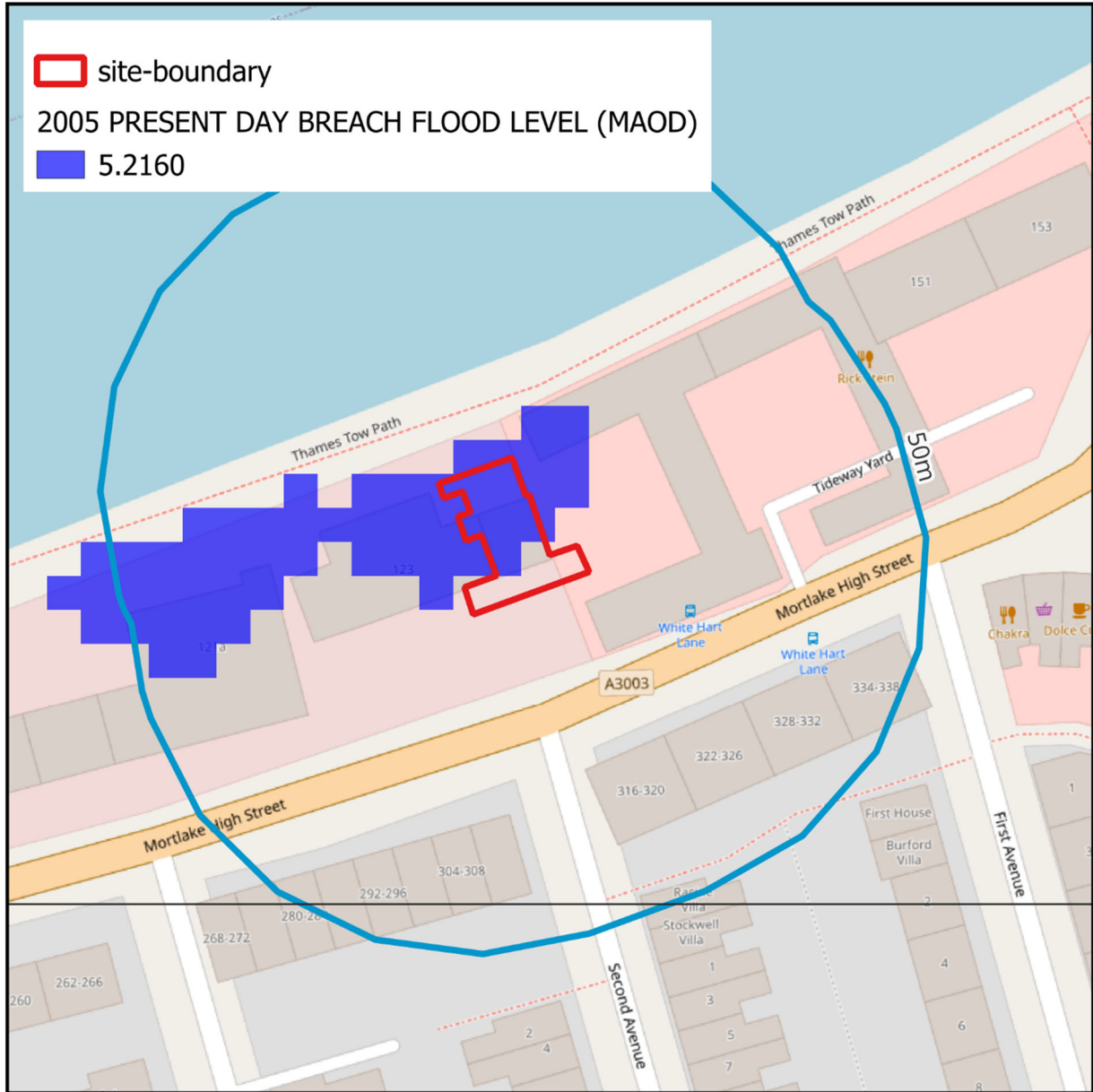


Figure 8: Modelled Present Day (2005) Breach Event (EA, 2024)
Contains Ordnance Survey data © Crown copyright and database rights 2024.
Environment Agency copyright and database rights 2024.

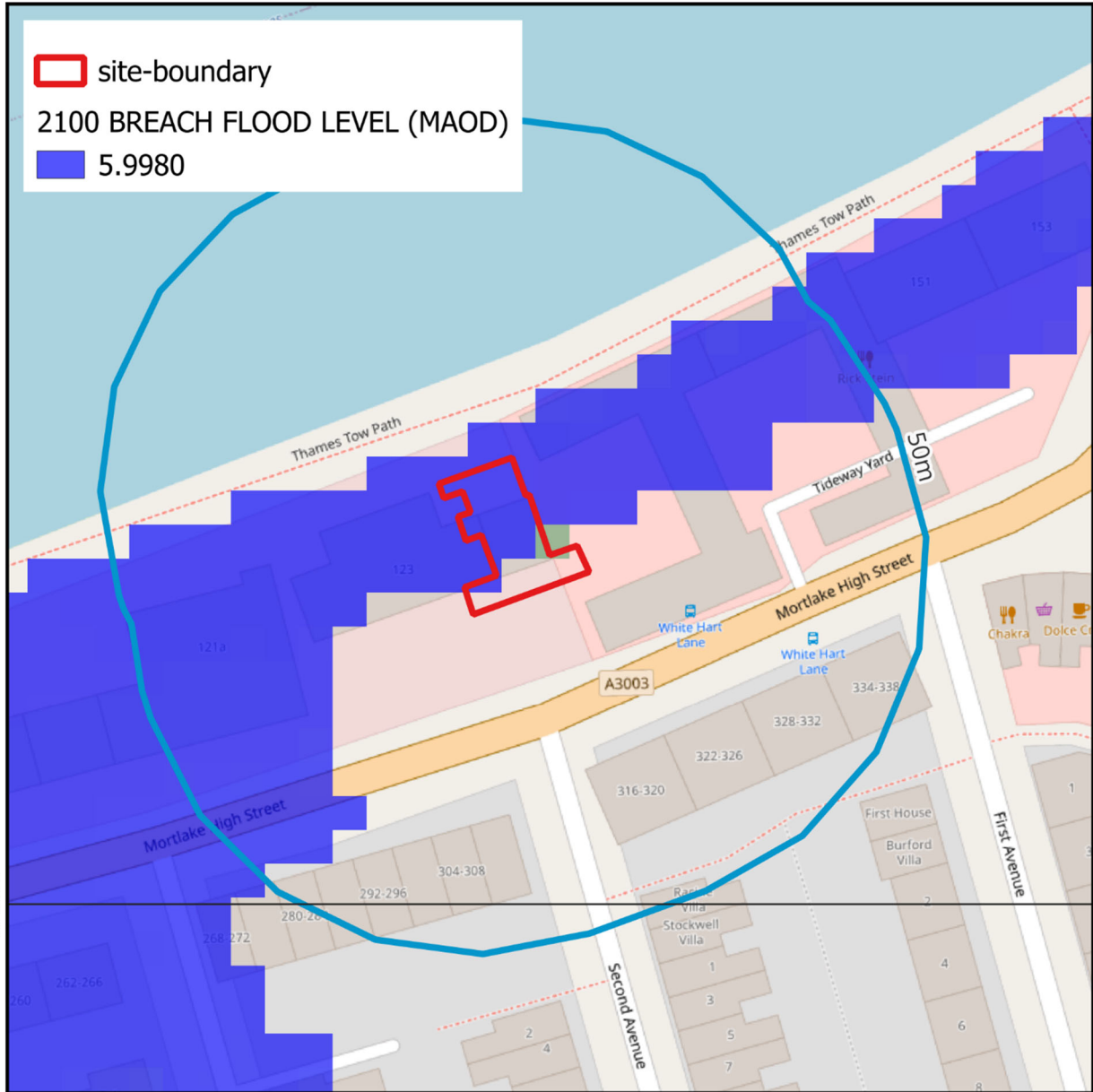


Figure 9: Modelled 2100 Breach Event (EA, 2024) Flood extent and Level
Contains Ordnance Survey data © Crown copyright and database rights 2024.
Environment Agency copyright and database rights 2024.

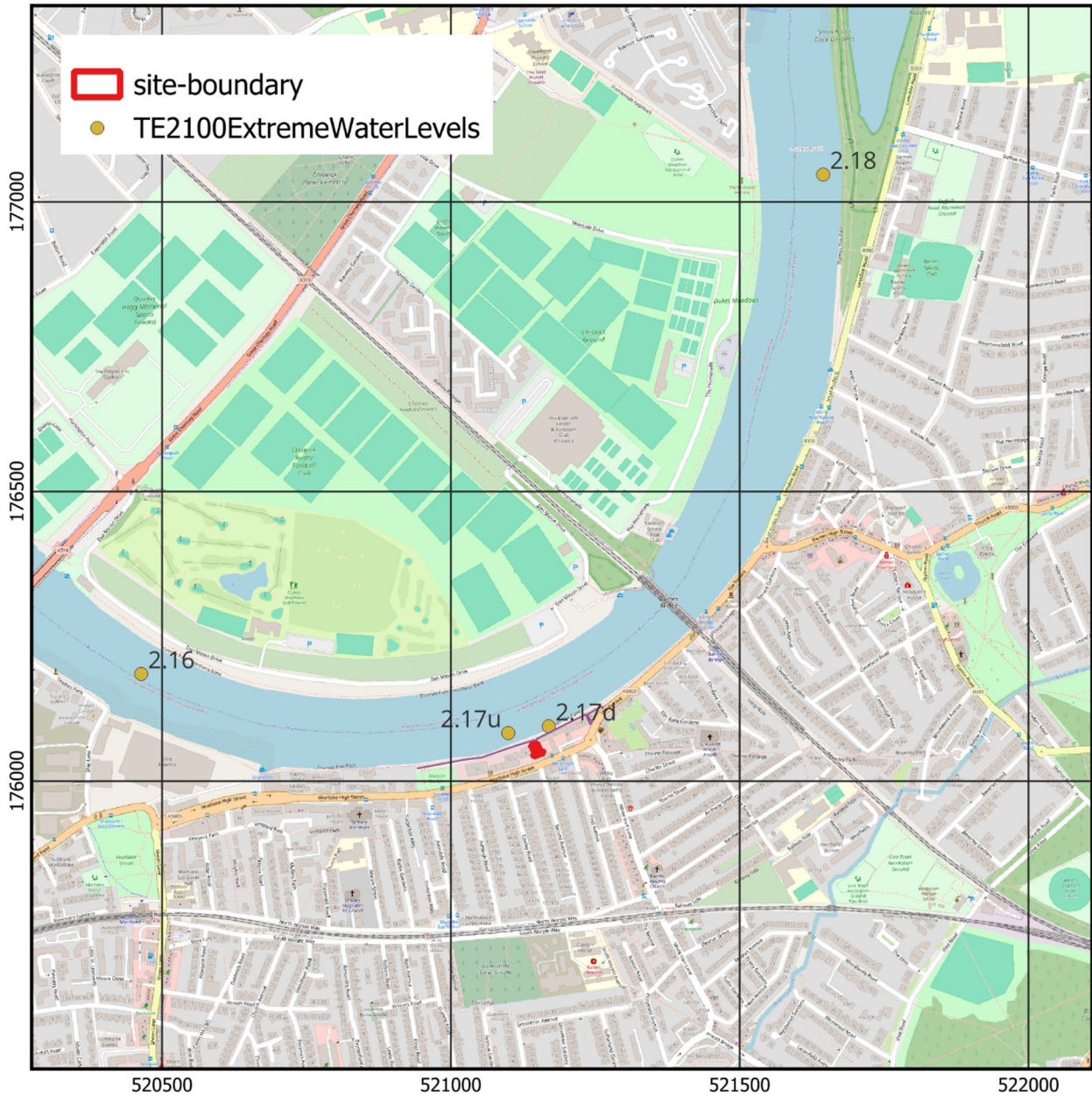


Figure 10: TE2100 Modelling study – Extreme Water Level - In channel flood level node points
Contains Ordnance Survey data © Crown copyright and database rights 2024.
Environment Agency copyright and database rights 2024.

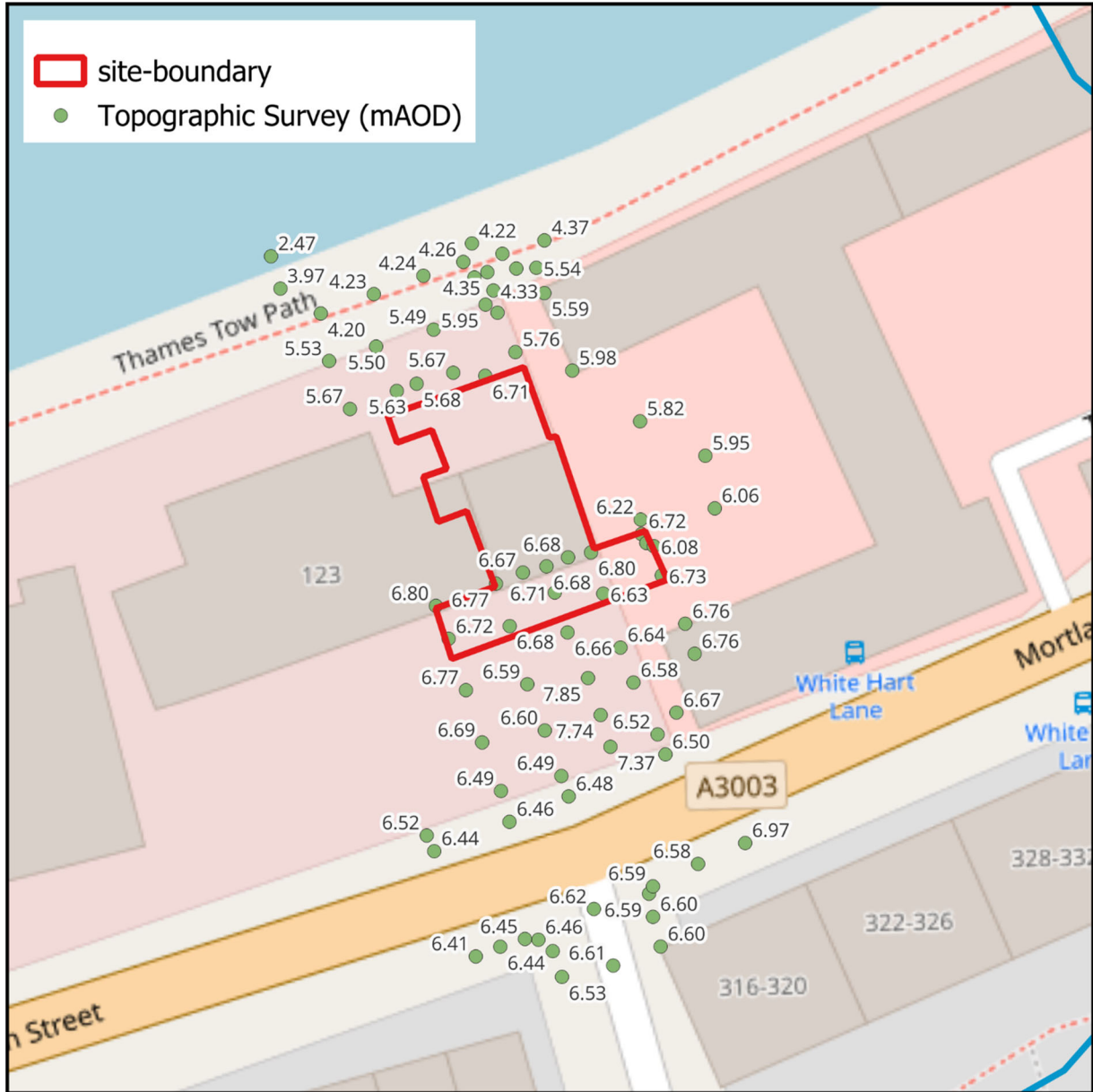


Figure 11: Topographic Survey (Colliers, 2024)

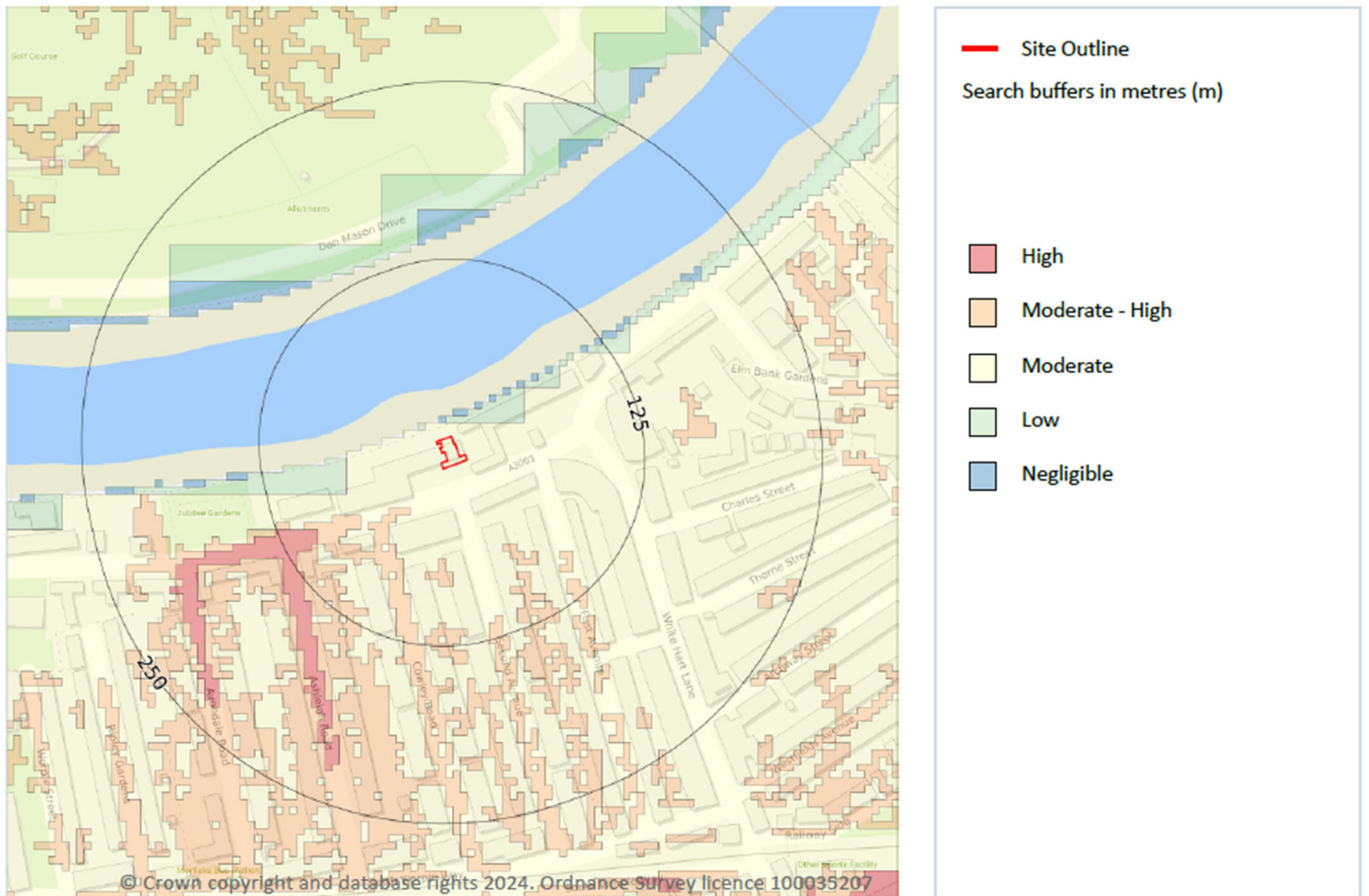


Figure 12: Groundwater Flood Risk Mapping (REF, Ambient, 2024)
Contains Ordnance Survey data © Crown copyright and database rights 2024.
Environment Agency copyright and database rights 2024.

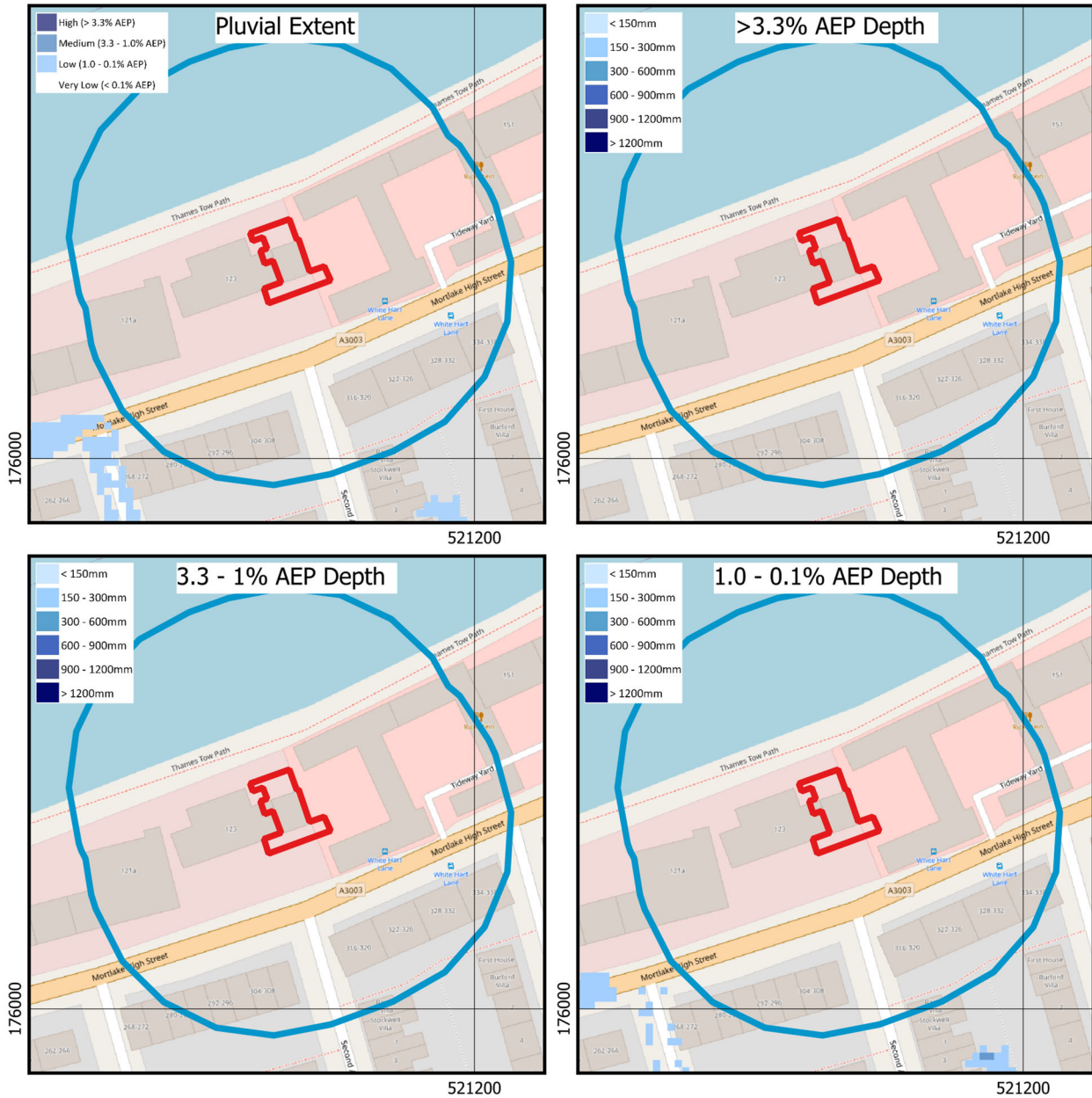


Figure 13: Present Day Modelled Surface Water Flooding Extent and Depth – Multiple Scenarios (EA, 2024)
 Contains Ordnance Survey data © Crown copyright and database rights 2024.
 Environment Agency copyright and database rights 2024.

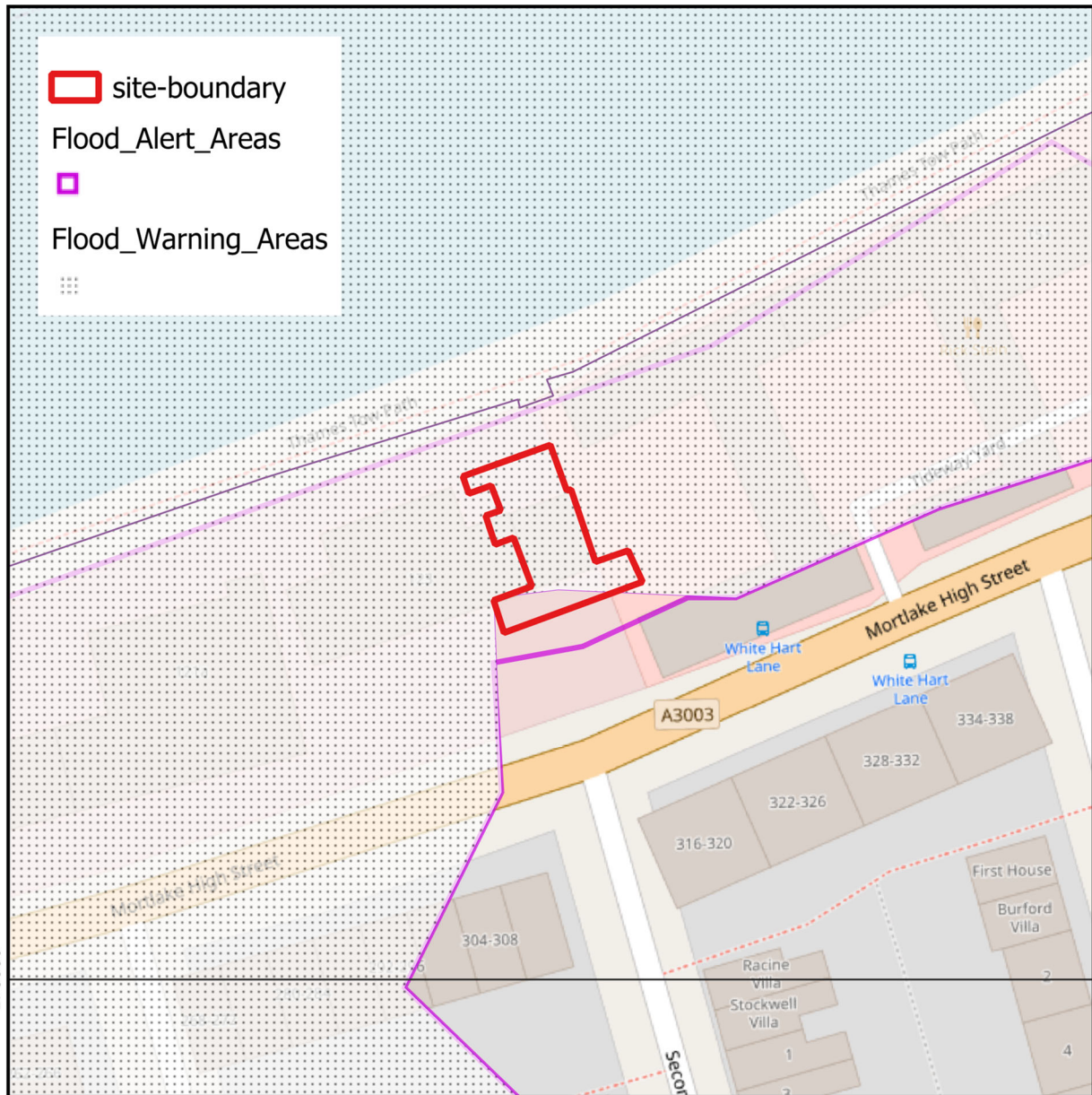


Figure 14: EA Flood Warning Coverage for the local area (EA, 2024)
Contains Ordnance Survey data © Crown copyright and database rights 2024.
Environment Agency copyright and database rights 2024

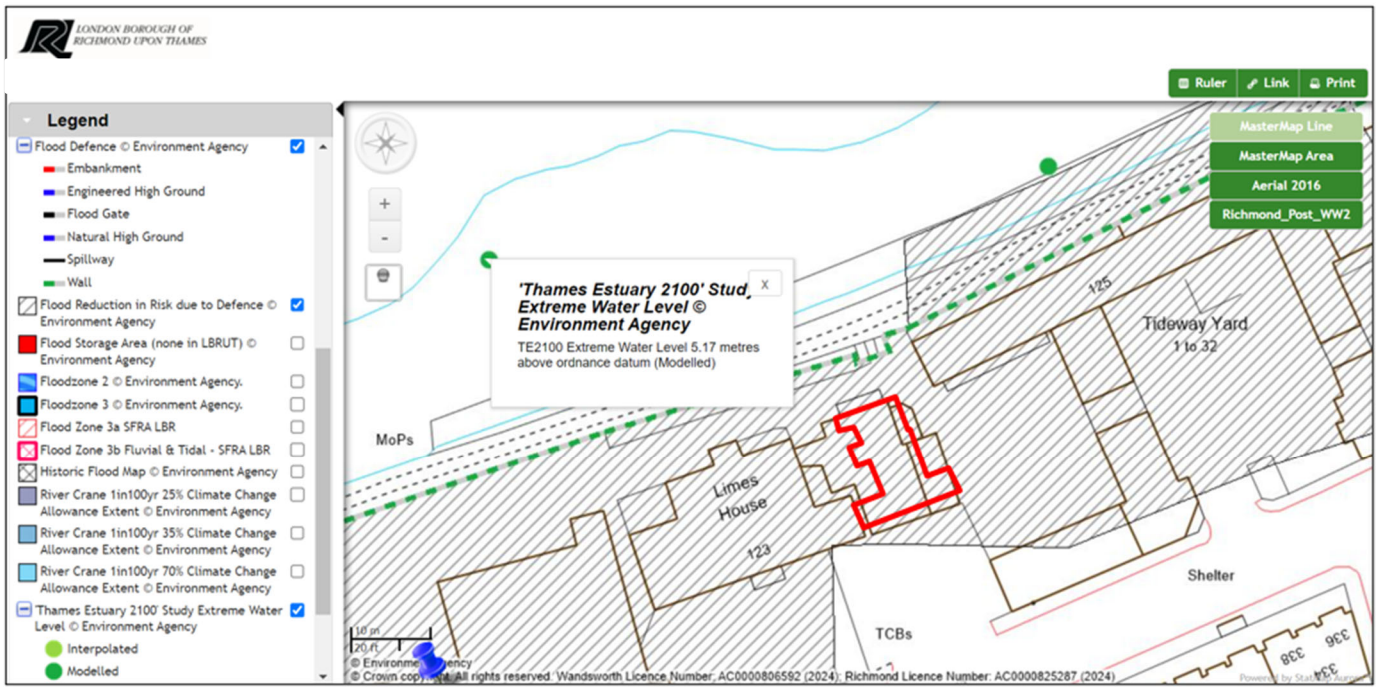


Figure 15: Reduction in flood risk due to the presence of flood defences and Thames present day extreme flood levels extracted from the London Borough of Richmond upon Thames GIS web portal.