

ANCILLARY EQUIPMENT

● CEILING FAN

COMMUNICATIONS

- ▲ DOOR ENTRY HANDSET, AUDIO
- ⊕ DOOR ENTRY CALL POINT, AUDIO
- ▲ DATA OUTLET - 2NO. CAT6 CABLES

LIGHTING

- LINEAR SUSPENDED/CEILING MOUNTED LIGHT
- ⊕ RECESSED DOWNLIGHT
- ⊕ PENDANT LIGHT
- ⊕ UPLIGHTER, IN GROUND
- ⊕ WALL LIGHT
- ⊕ 1 WAY SWITCH
- ⊕ 2 WAY SWITCH
- ⊕ "C" INDICATES LIGHTING CIRCUIT NUMBER
- ⊕ "EMC" EMERGENCY LIGHTING CIRCUIT VIA KEYSWITCH

SECURITY SYSTEM

- ⊕ SECURITY - KEYPAD ACCESS CONTROL UNIT
- ⊕ DOOR RELEASE BUTTON
- ⊕ DOOR ENTRY CONTROL PANEL
*REF DENOTES PANEL REFERENCE.

SMALL POWER

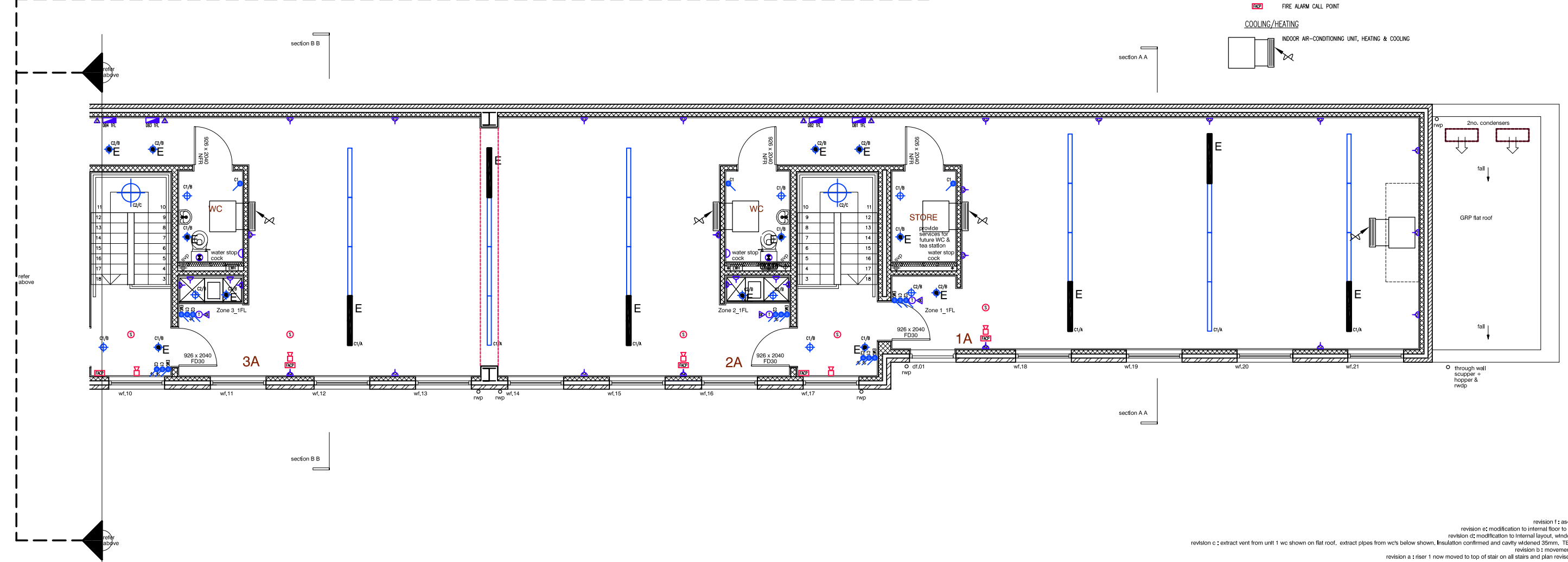
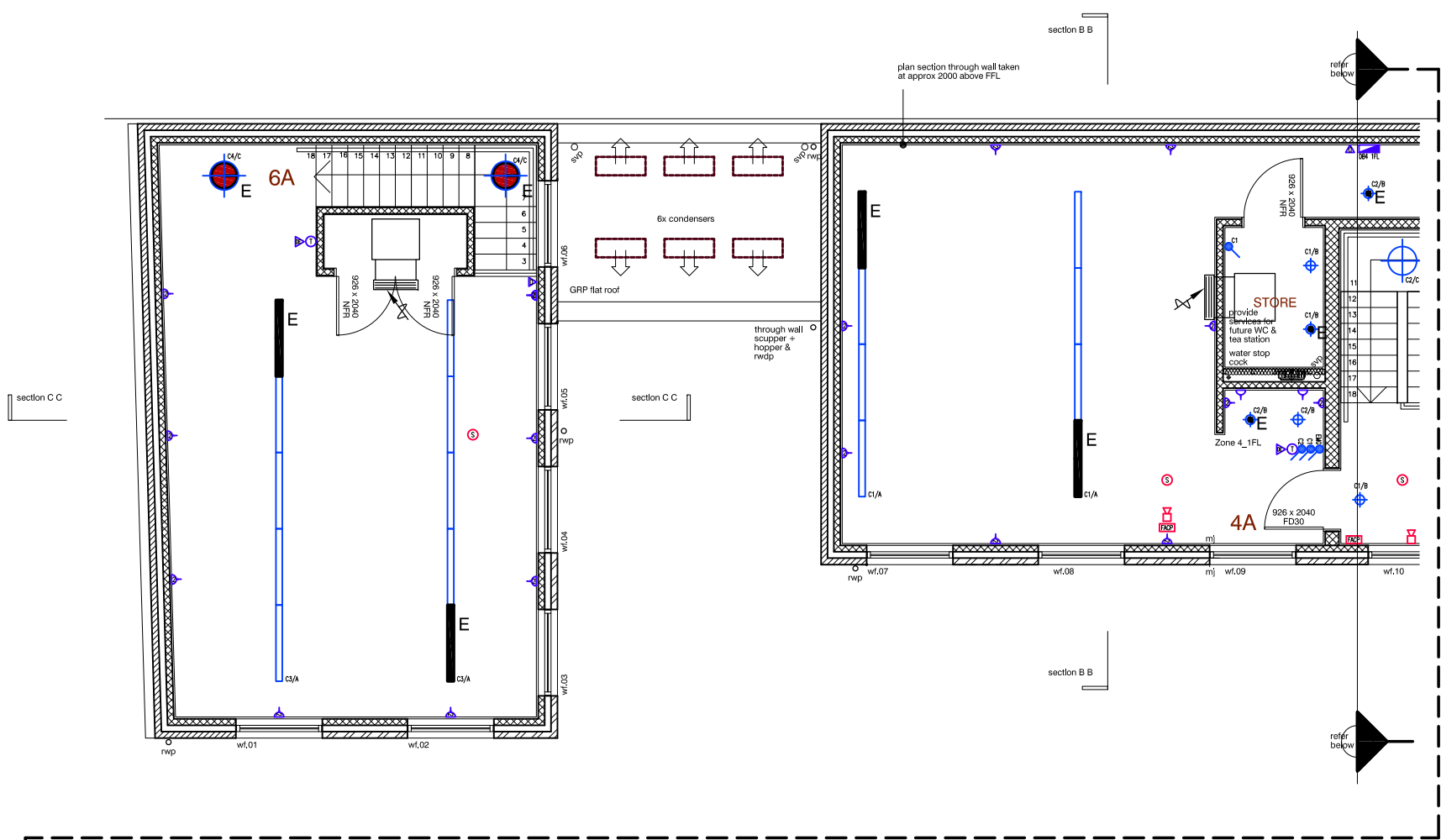
- ⊕ DOUBLE SWITCHED SOCKET
- ⊕ SINGLE SWITCHED SOCKET
- ⊕ DOUBLE SWITCHED SOCKET, RCD PROTECTED
- ⊕ DISTRIBUTION BOARD, "REF" INDICATES PANEL REFERENCE
- ⊕ FLEX OUTLET
- ⊕ SUPPLY AUTHORITIES METER (KWH)

FIRE ALARM

- ⊕ SMOKE SENSOR - CEILING MOUNTED
- ⊕ FIRE ALARM SOUNDER - WALL MOUNTED
- ⊕ MAIN FIRE ALARM PANEL
- ⊕ FIRE ALARM CALL POINT

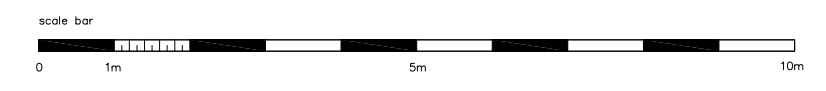
COOLING/HEATING

- ⊕ INDOOR AIR-CONDITIONING UNIT, HEATING & COOLING



do not scale from this drawing.
verify all dimensions by the measurements
errors and omissions to be reported to the architect.
copyright

Drawing issued for Planning purposes only



notes

1. Final coordination of drawings and information with ADS Associates and Mecserve to be finalised on later issues of this drawing. Any discrepancies to be reported to the architect

title	Proposed Ground Floor plan	client	Charles Richards	project	Proposed B1 units on land to rear of 33 - 57 Grosvenor Road Twickenham, Middlesex TW1 4AD	revision f: as-built roof plan. 31.08.16
scale	1:50@A1 / 1:100@A3	drawn	gt	checked		revision e: modification to internal floor to ceiling heights 26.11.13
date	12.08.11					revision d: modification to internal layout, windows and doors 09.10.13
						revision c: extract vent from unit 1 wc shown on flat roof, extract pipes from wc's below shown. Insulation confirmed and cavity widened 35mm. TENDER ISSUE: 21.12.11
						revision b: movement joints added. 02.12.11
						revision a: riser 1 now moved to top of stair on all stairs and plan revised accordingly. 23.11.11
						drawing number
						165.101f
						Genievue Therault Architecture & Interiors 42 Brook Street, London W1K 5DB t: 07904 974 066 e: mail@genievue.com