

Site Details:

34, NASSAU ROAD, BARNES,
LONDON, RICHMOND UPON
THAMES, SW13 9QE

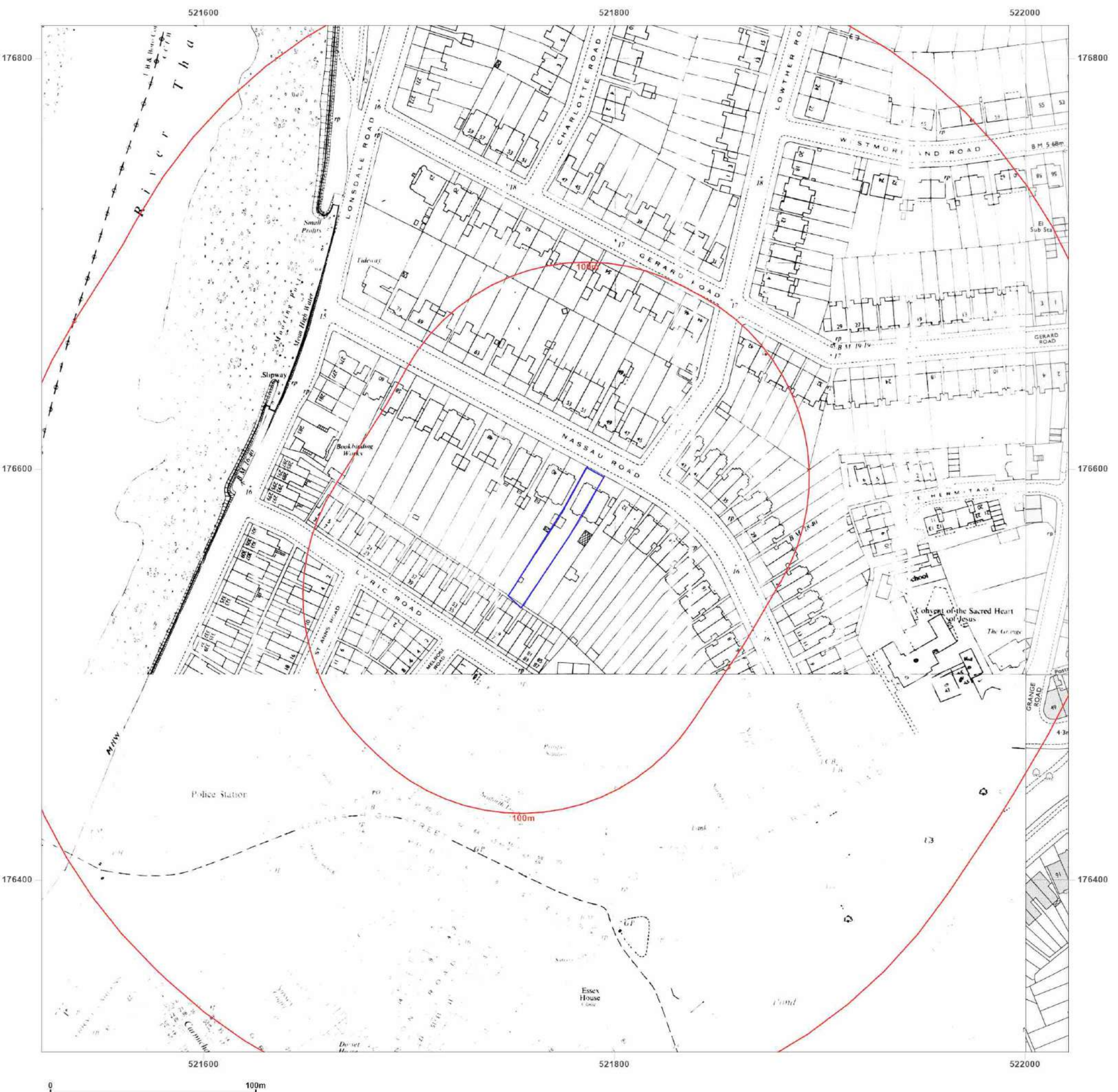
Client Ref: GWPR5909
Report Ref: GS-R7I-VE4-EA3-BPT
Grid Ref: 521771, 176566

Map Name: National Grid

Map date: 1972-1974

Scale: 1:1,250

Printed at: 1:2,000



Surveved N/A Revised N/A Edition N/A Copyright N/A Levelled N/A	Surveved N/A Revised 1971 Edition N/A Copyright 1972 Levelled 1954
Surveved N/A Revised N/A Edition N/A Copyright N/A Levelled N/A	Surveved 1951 Revised 1973 Edition N/A Copyright 1974 Levelled 1954



Produced by
Groundsure Insights
T: 08444 159000
E: info@groundsure.com
W: www.groundsure.com

© Crown copyright and database rights 2024 Ordnance Survey 100035207

Production date: 03 April 2024

Map legend available at:
www.groundsure.com/sites/default/files/groundsure_legend.pdf

Site Details:

34, NASSAU ROAD, BARNES,
LONDON, RICHMOND UPON
THAMES, SW13 9QE

Client Ref: GWPR5909
Report Ref: GS-R7I-VE4-EA3-BPT
Grid Ref: 521771, 176566

Map Name: National Grid

Map date: 1979-1983

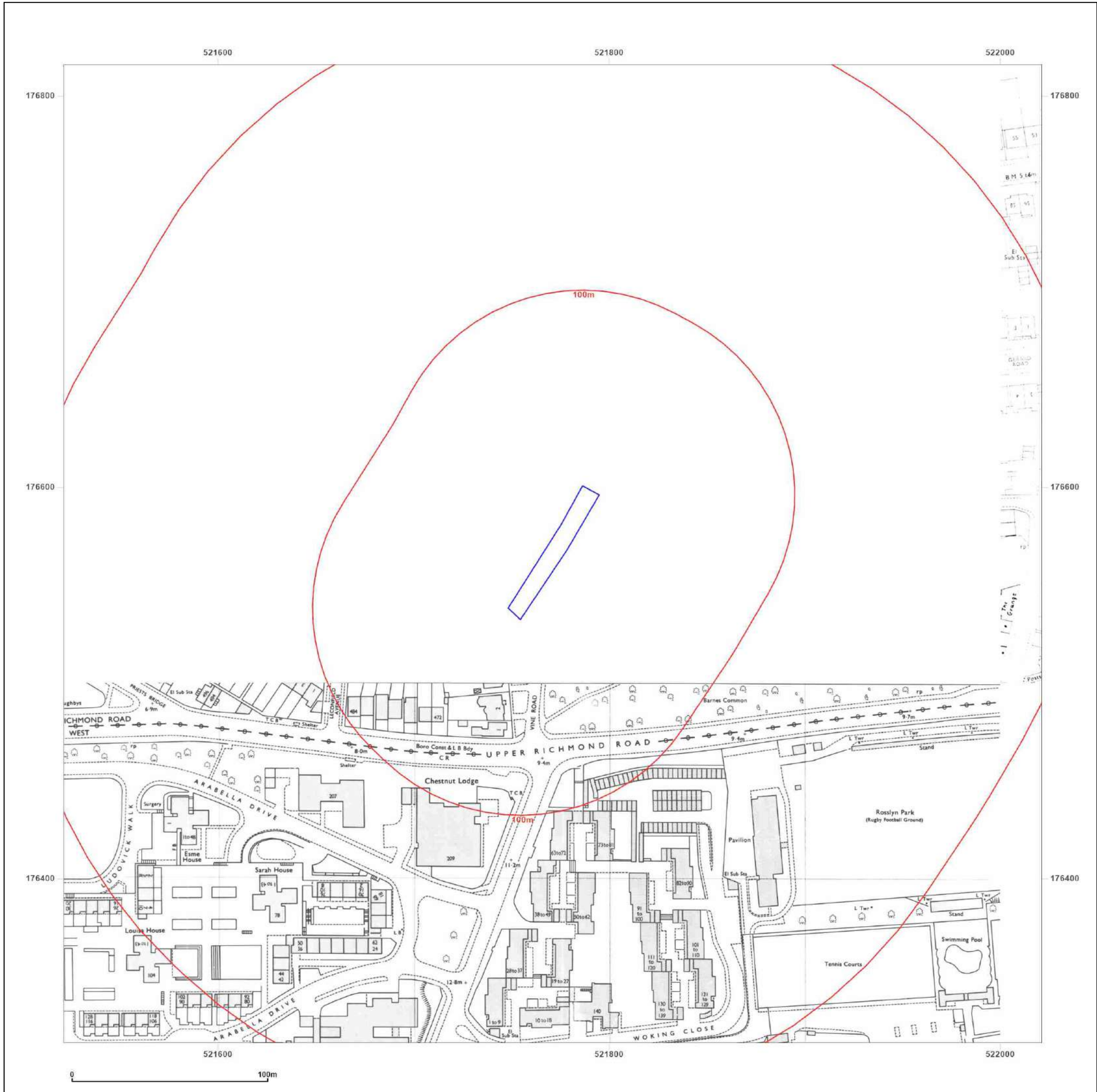
Scale: 1:1,250

Printed at: 1:2,000



Surveyed N/A
 Revised N/A
 Edition N/A
 Copyright 1983
 Levelled 1973

Surveyed N/A
 Revised N/A
 Edition N/A
 Copyright N/A
 Levelled N/A



Produced by
Groundsure Insights
T: 08444 159000
E: info@groundsure.com
W: www.groundsure.com

© Crown copyright and database rights 2024 Ordnance Survey 100035207

Production date: 03 April 2024

Map legend available at:
www.groundsure.com/sites/default/files/groundsure_legend.pdf

Site Details:
 34, NASSAU ROAD, BARNES,
 LONDON, RICHMOND UPON
 THAMES, SW13 9QE

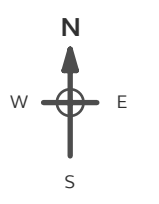
Client Ref: GWPR5909
Report Ref: GS-R7I-VE4-EA3-BPT
Grid Ref: 521771, 176566

Map Name: National Grid

Map date: 1986-1991

Scale: 1:1,250

Printed at: 1:2,000



Surveyed 1973 Revised 1986 Edition N/A Copyright 1986 Levelled 1973	Surveyed N/A Revised N/A Edition N/A Copyright 1991 Levelled N/A
Surveyed N/A Revised N/A Edition N/A Copyright 1991 Levelled N/A	Surveyed N/A Revised N/A Edition N/A Copyright 1991 Levelled N/A



Produced by
 Groundsure Insights
 T: 08444 159000
 E: info@groundsure.com
 W: www.groundsure.com

© Crown copyright and database rights 2024 Ordnance Survey 100035207

Production date: 03 April 2024

Map legend available at:
www.groundsure.com/sites/default/files/groundsure_legend.pdf



Site Details:

34, NASSAU ROAD, BARNES,
LONDON, RICHMOND UPON
THAMES, SW13 9QE

Client Ref: GWPR5909
Report Ref: GS-R7I-VE4-EA3-BPT
Grid Ref: 521771, 176566

Map Name: National Grid

Map date: 1991

Scale: 1:1,250

Printed at: 1:2,000



Surveved N/A Revised N/A Edition N/A Copyright 1991 Levelled N/A	Surveved 1991 Revised 1991 Edition N/A Copyright 1991 Levelled N/A
Surveved 1991 Revised 1991 Edition N/A Copyright 1991 Levelled N/A	Surveved 1991 Revised 1991 Edition N/A Copyright 1991 Levelled N/A



Produced by
Groundsure Insights
T: 08444 159000
E: info@groundsure.com
W: www.groundsure.com

© Crown copyright and database rights 2024 Ordnance Survey 100035207

Production date: 03 April 2024

Map legend available at:
www.groundsure.com/sites/default/files/groundsure_legend.pdf

Site Details:

34, NASSAU ROAD, BARNES,
LONDON, RICHMOND UPON
THAMES, SW13 9QE

Client Ref: GWPR5909
Report Ref: GS-R7I-VE4-EA3-BPT
Grid Ref: 521771, 176566

Map Name: National Grid

Map date: 1991-1993

Scale: 1:1,250

Printed at: 1:2,000



Surveyed 1991
Revised 1991
Edition N/A
Copyright 1991
Levelled N/A

Surveyed N/A
Revised N/A
Edition N/A
Copyright 1993
Levelled N/A



Produced by
Groundsure Insights
T: 08444 159000
E: info@groundsure.com
W: www.groundsure.com

© Crown copyright and database rights 2024 Ordnance Survey 100035207

Production date: 03 April 2024

Map legend available at:
www.groundsure.com/sites/default/files/groundsure_legend.pdf



Site Details:

34, NASSAU ROAD, BARNES,
LONDON, RICHMOND UPON
THAMES, SW13 9QE

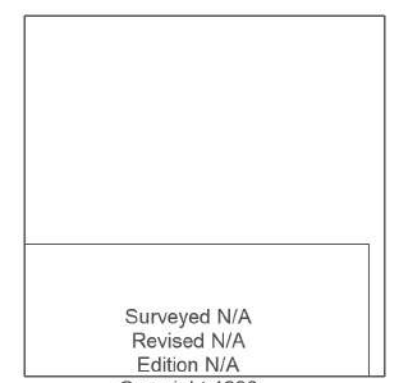
Client Ref: GWPR5909
Report Ref: GS-R7I-VE4-EA3-BPT
Grid Ref: 521771, 176566

Map Name: National Grid

Map date: 1993

Scale: 1:1,250

Printed at: 1:2,000



Surveyed N/A
Revised N/A
Edition N/A
Copyright 1993
Levelled N/A

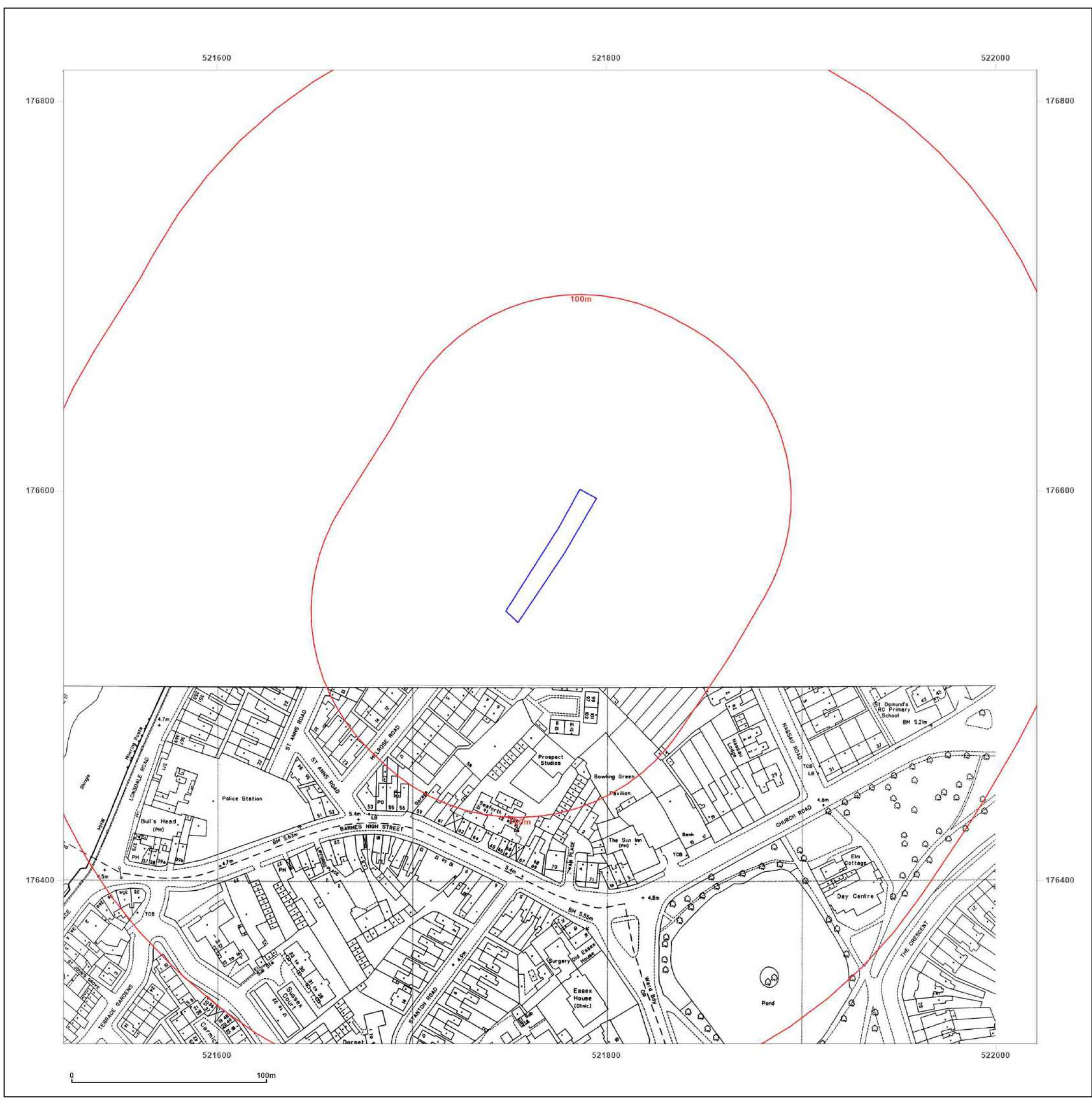


Produced by
Groundsure Insights
T: 08444 159000
E: info@groundsure.com
W: www.groundsure.com

© Crown copyright and database rights 2024 Ordnance Survey 100035207

Production date: 03 April 2024

Map legend available at:
www.groundsure.com/sites/default/files/groundsure_legend.pdf

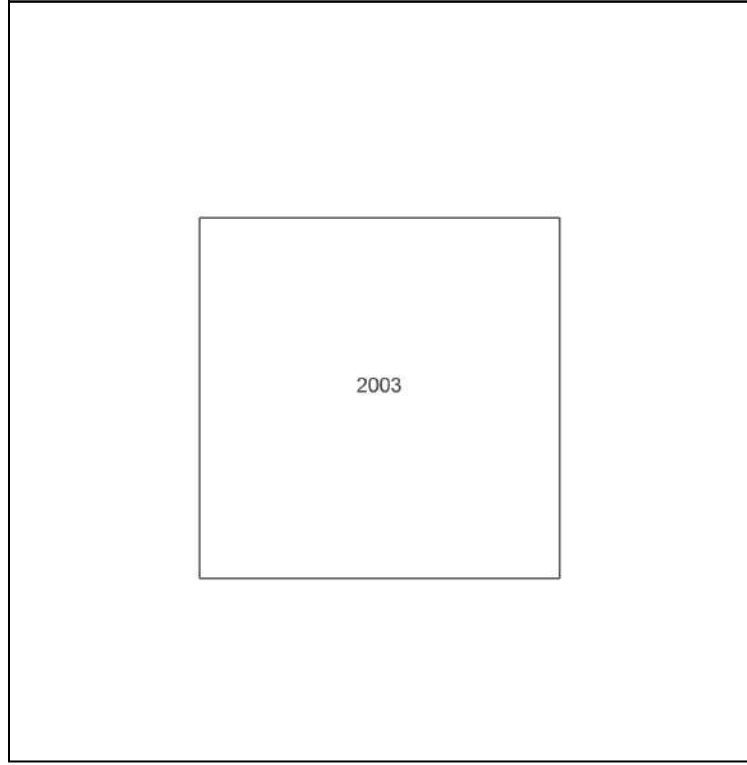
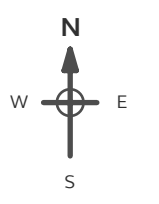


Site Details:

34, NASSAU ROAD, BARNES,
LONDON, RICHMOND UPON
THAMES, SW13 9QE

Client Ref: GWPR5909
Report Ref: GS-R7I-VE4-EA3-BPT
Grid Ref: 521771, 176566

Map Name: LandLine
Map date: 2003
Scale: 1:1,250
Printed at: 1:1,250



Powered by  Produced by
Groundsure Insights
T: 08444 159000
E: info@groundsure.com
W: www.groundsure.com

© Crown copyright and database rights 2024 Ordnance Survey 100035207

Production date: 03 April 2024

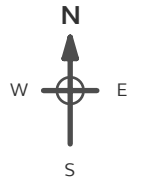
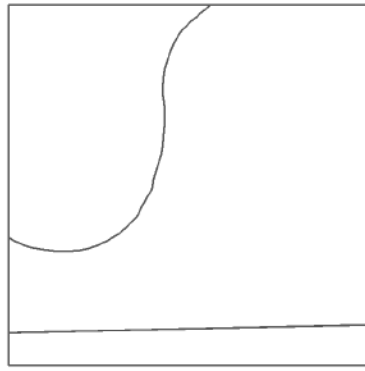
Map legend available at:
www.groundsure.com/sites/default/files/groundsure_legend.pdf



Site Details:
 34, NASSAU ROAD, BARNES,
 LONDON, RICHMOND UPON
 THAMES, SW13 9QE

Client Ref: GWPR5909
Report Ref: GS-R7I-VE4-EA3-BPT
Grid Ref: 521771, 176566

Map Name: County Series
Map date: 1865-1866
Scale: 1:10,560
Printed at: 1:10,560

Surveyed 1866
 Revised 1866
 Edition N/A
 Copyright N/A
 Levelled N/A

Surveyed 1865
 Revised 1865
 Edition N/A
 Copyright N/A
 Levelled N/A

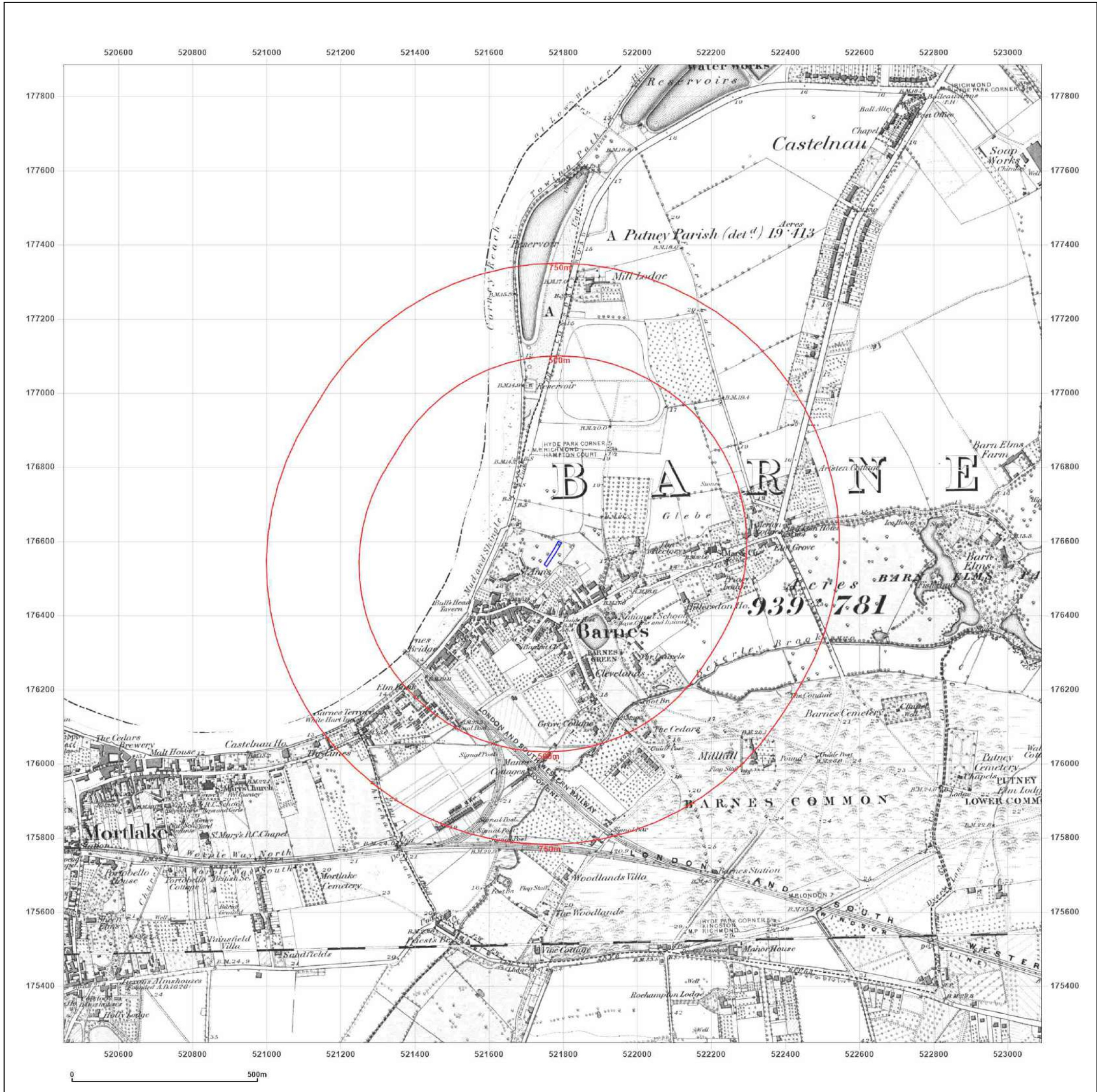
Powered by


Produced by
 Groundsure Insights
 T: 08444 159000
 E: info@groundsure.com
 W: www.groundsure.com

© Crown copyright and database rights 2024 Ordnance Survey 100035207

Production date: 03 April 2024

Map legend available at:
www.groundsure.com/sites/default/files/groundsure_legend.pdf



Site Details:

34, NASSAU ROAD, BARNES,
LONDON, RICHMOND UPON
THAMES, SW13 9QE

Client Ref: GWPR5909
Report Ref: GS-R7I-VE4-EA3-BPT
Grid Ref: 521771, 176566

Map Name: County Series

Map date: 1873

Scale: 1:10,560

Printed at: 1:10,560



Surveyed 1866
Revised 1873
Edition N/A
Copyright N/A
Levelled N/A

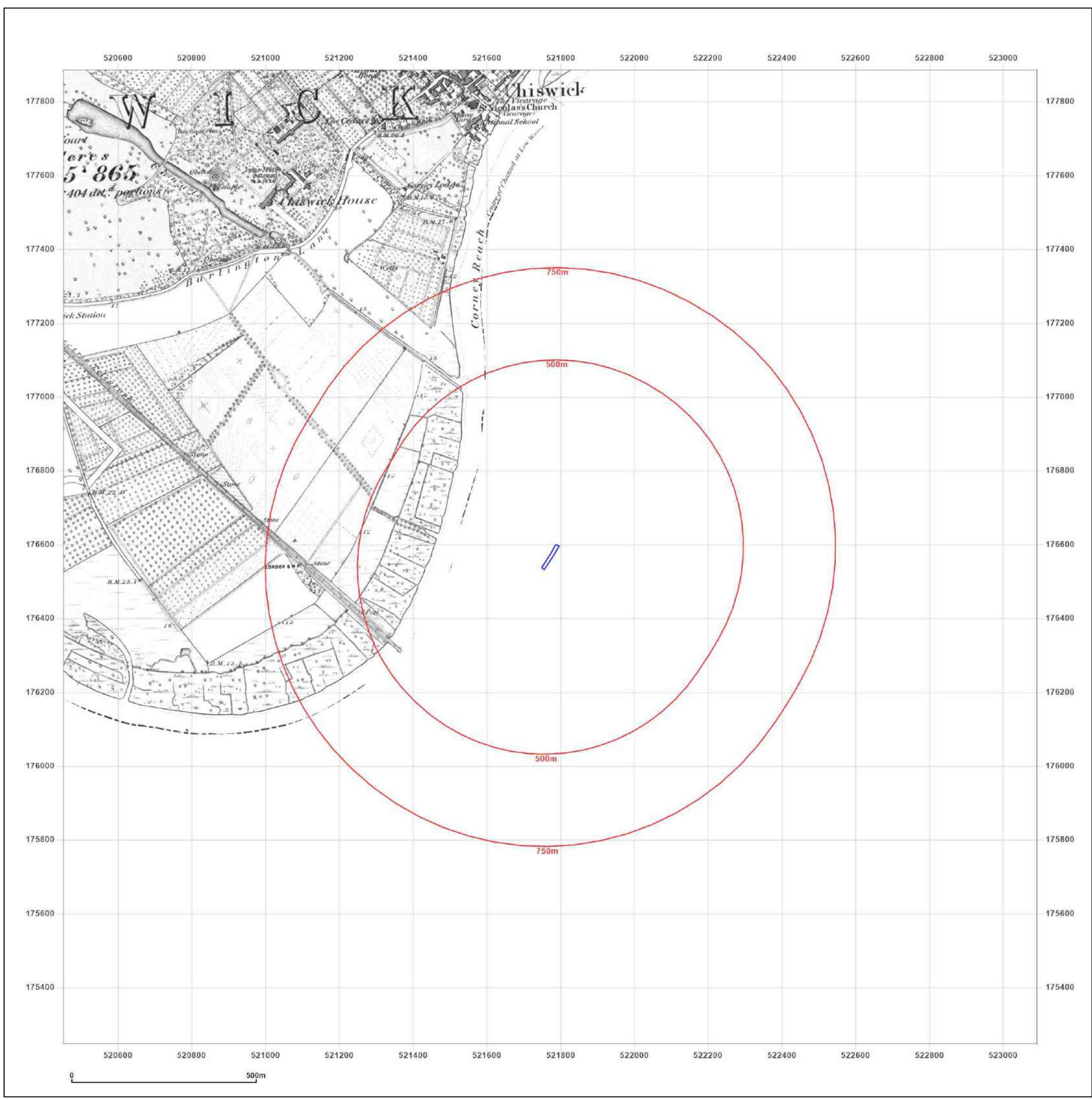


Produced by
Groundsure Insights
T: 08444 159000
E: info@groundsure.com
W: www.groundsure.com

© Crown copyright and database rights 2024 Ordnance Survey 100035207

Production date: 03 April 2024

Map legend available at:
www.groundsure.com/sites/default/files/groundsure_legend.pdf



Site Details:

34, NASSAU ROAD, BARNES,
LONDON, RICHMOND UPON
THAMES, SW13 9QE

Client Ref: GWPR5909
Report Ref: GS-R7I-VE4-EA3-BPT
Grid Ref: 521771, 176566

Map Name: County Series

Map date: 1894-1895

Scale: 1:10,560

Printed at: 1:10,560



Surveyed 1866
Revised 1894
Edition N/A
Copyright N/A
Levelled N/A

Surveyed 1867
Revised 1895
Edition N/A
Copyright N/A
Levelled N/A



Produced by
Groundsure Insights
T: 08444 159000
E: info@groundsure.com
W: www.groundsure.com

© Crown copyright and database rights 2024 Ordnance Survey 100035207

Production date: 03 April 2024

Map legend available at:
www.groundsure.com/sites/default/files/groundsure_legend.pdf



Site Details:

34, NASSAU ROAD, BARNES,
LONDON, RICHMOND UPON
THAMES, SW13 9QE

Client Ref: GWPR5909
Report Ref: GS-R7I-VE4-EA3-BPT
Grid Ref: 521771, 176566

Map Name: County Series

Map date: 1896

Scale: 1:10,560

Printed at: 1:10,560



Surveyed 1893
Revised N/A
Edition 1896
Copyright N/A
Levelled N/A

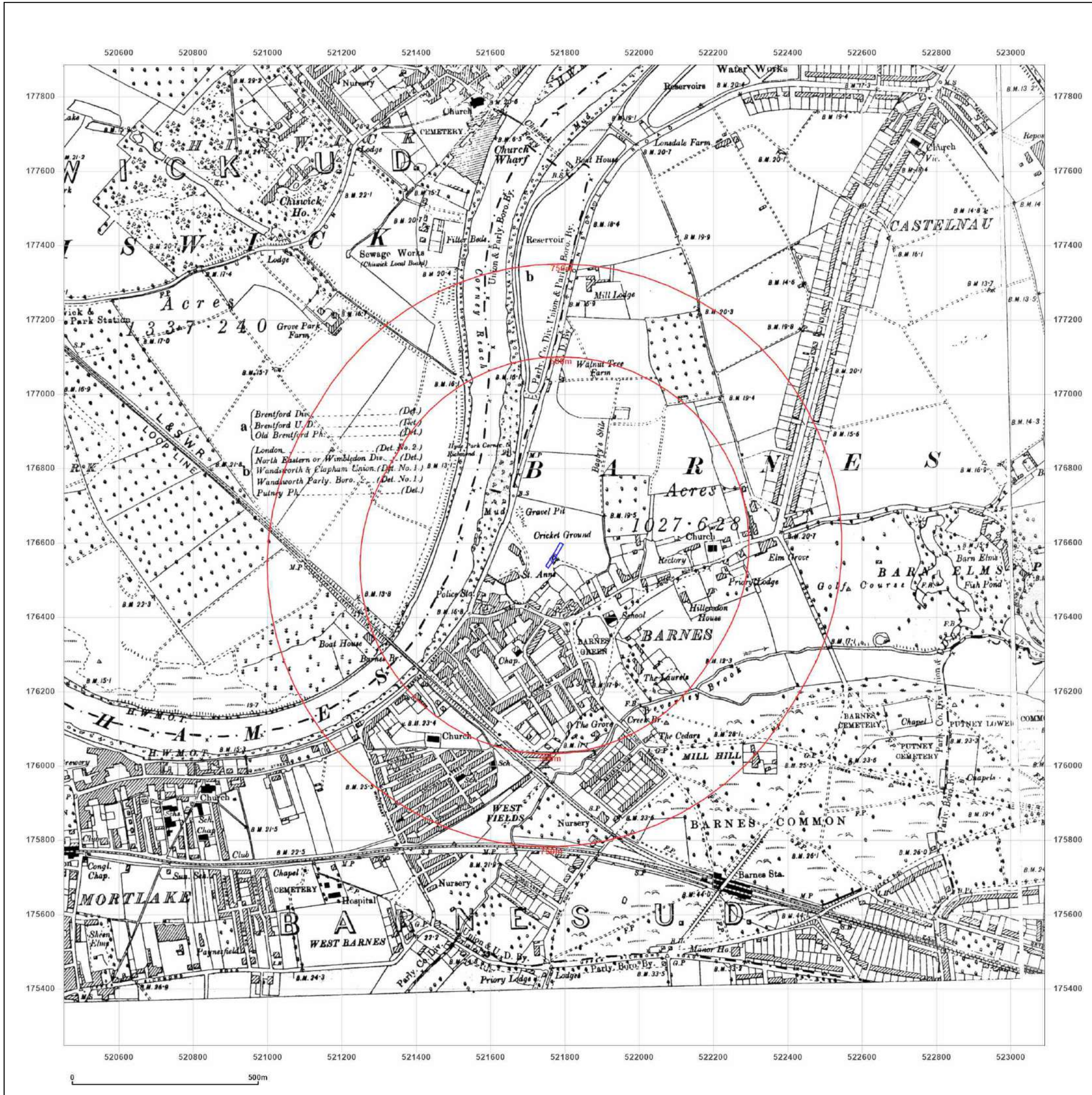


Produced by
Groundsure Insights
T: 08444 159000
E: info@groundsure.com
W: www.groundsure.com

© Crown copyright and database rights 2024 Ordnance Survey 100035207

Production date: 03 April 2024

Map legend available at:
www.groundsure.com/sites/default/files/groundsure_legend.pdf




Site Details:

34, NASSAU ROAD, BARNES,
LONDON, RICHMOND UPON
THAMES, SW13 9QE

Client Ref: GWPR5909
Report Ref: GS-R7I-VE4-EA3-BPT
Grid Ref: 521771, 176566

Map Name: County Series
Map date: 1894-1899
Scale: 1:10,560
Printed at: 1:10,560



Surveyed 1866
Revised 1894
Edition N/A
Copyright N/A
Levelled N/A

Surveyed 1867
Revised 1895
Edition N/A
Copyright N/A
Levelled N/A

Powered by

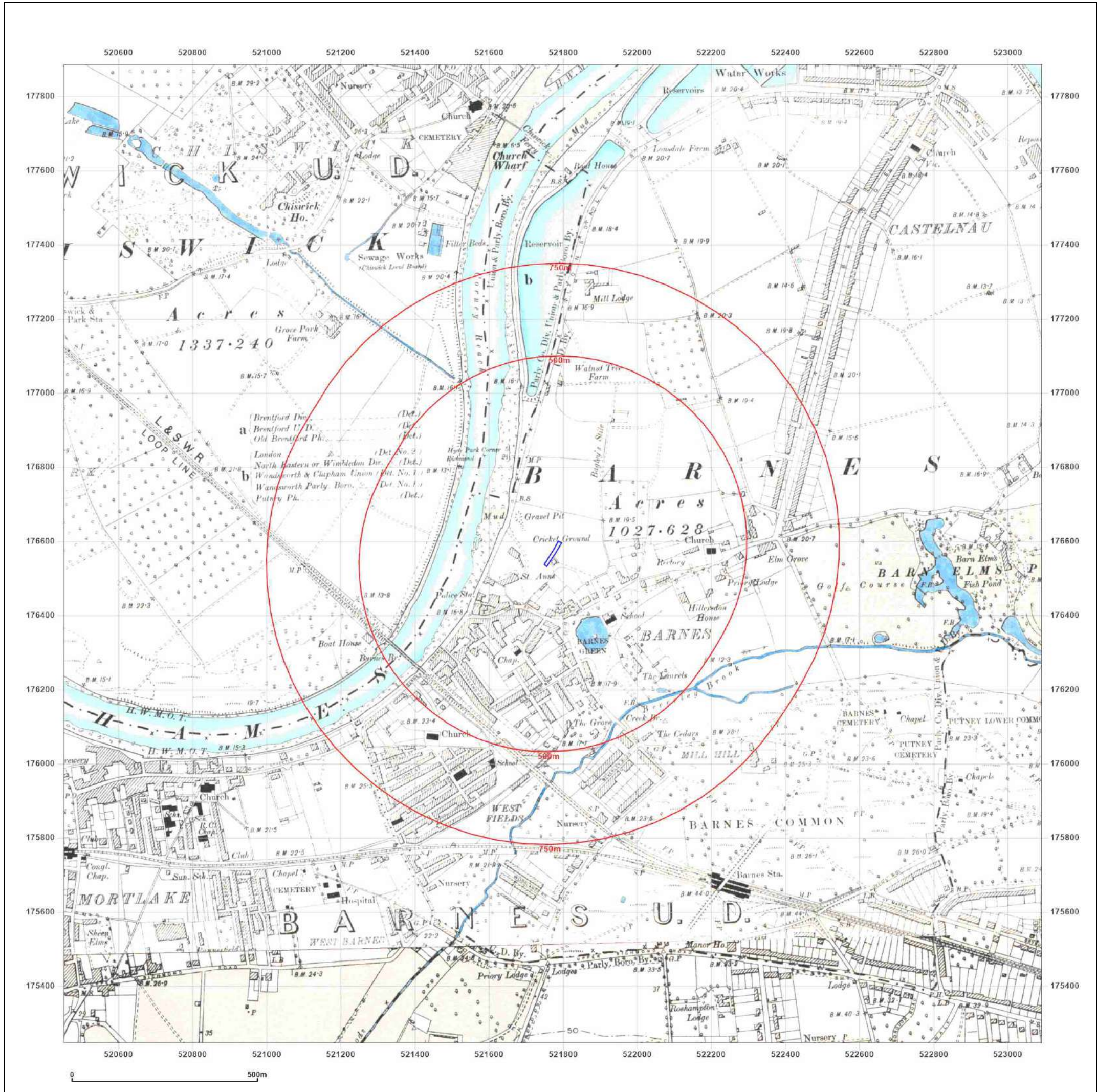


Produced by
Groundsure Insights
T: 08444 159000
E: info@groundsure.com
W: www.groundsure.com

© Crown copyright and database rights 2024 Ordnance Survey 100035207

Production date: 03 April 2024

Map legend available at:
www.groundsure.com/sites/default/files/groundsure_legend.pdf



Site Details:

34, NASSAU ROAD, BARNES,
LONDON, RICHMOND UPON
THAMES, SW13 9QE

Client Ref: GWPR5909
Report Ref: GS-R7I-VE4-EA3-BPT
Grid Ref: 521771, 176566

Map Name: County Series

Map date: 1919

Scale: 1:10,560

Printed at: 1:10,560



Surveyed 1866
Revised 1919
Edition N/A
Copyright N/A
Levelled N/A

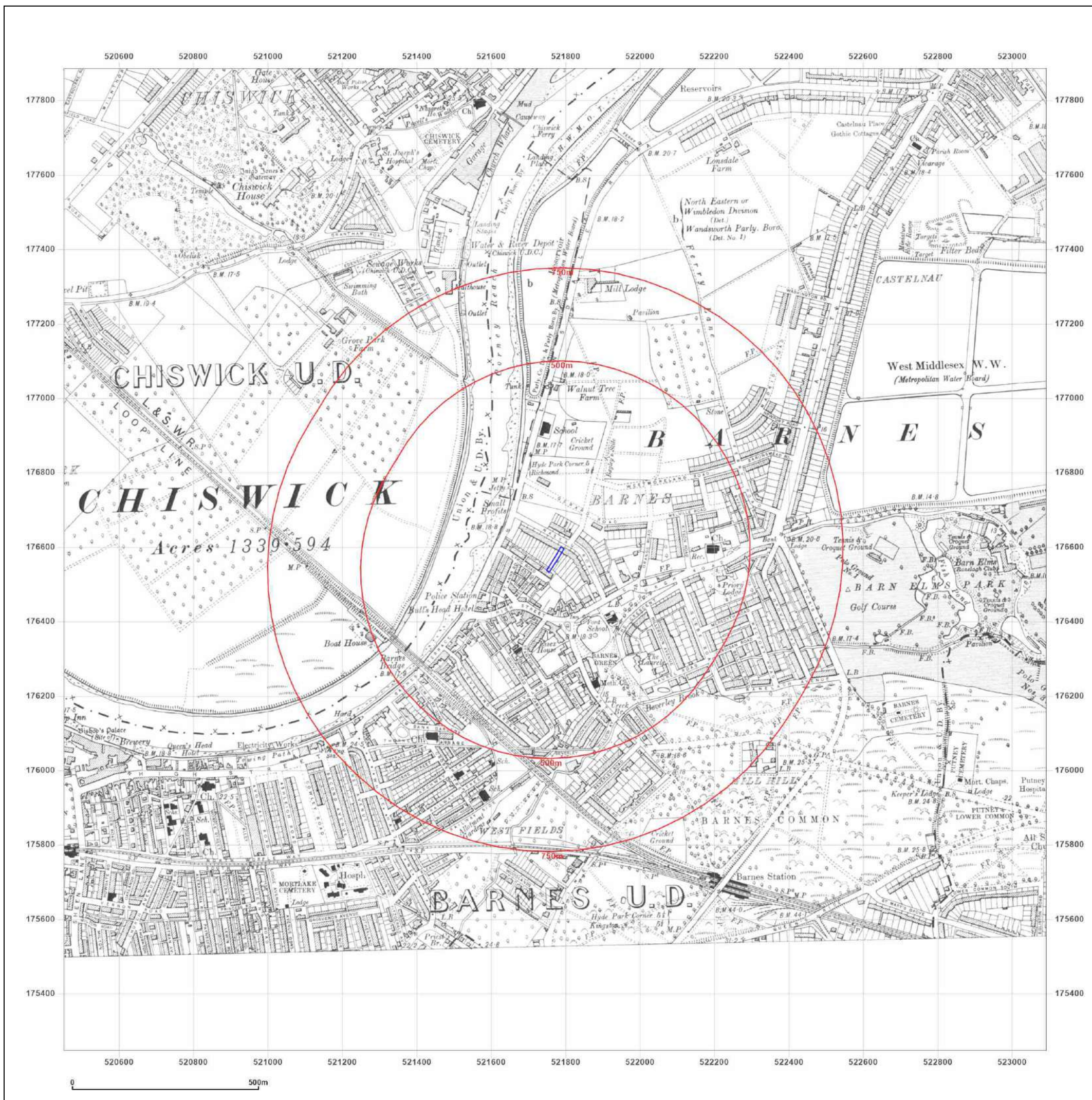


Produced by
Groundsure Insights
T: 08444 159000
E: info@groundsure.com
W: www.groundsure.com

© Crown copyright and database rights 2024 Ordnance Survey 100035207

Production date: 03 April 2024

Map legend available at:
www.groundsure.com/sites/default/files/groundsure_legend.pdf





Site Details:

34, NASSAU ROAD, BARNES,
LONDON, RICHMOND UPON
THAMES, SW13 9QE

Client Ref: GWPR5909
Report Ref: GS-R7I-VE4-EA3-BPT
Grid Ref: 521771, 176566

Map Name: County Series
Map date: 1920
Scale: 1:10,560
Printed at: 1:10,560

Surveyed 1867
Revised 1920
Edition N/A
Copyright N/A
Levelled N/A



Produced by
Groundsure Insights
T: 08444 159000
E: info@groundsure.com
W: www.groundsure.com

© Crown copyright and database rights 2024 Ordnance Survey 100035207

Production date: 03 April 2024

Map legend available at:
www.groundsure.com/sites/default/files/groundsure_legend.pdf



Site Details:

34, NASSAU ROAD, BARNES,
LONDON, RICHMOND UPON
THAMES, SW13 9QE

Client Ref: GWPR5909
Report Ref: GS-R7I-VE4-EA3-BPT
Grid Ref: 521771, 176566

Map Name: County Series

Map date: 1933

Scale: 1:10,560

Printed at: 1:10,560



Surveyed 1866
Revised 1933
Edition N/A
Copyright N/A
Levelled N/A

Surveyed 1866
Revised 1933
Edition N/A
Copyright N/A
Levelled N/A



Produced by
Groundsure Insights
T: 08444 159000
E: info@groundsure.com
W: www.groundsure.com

© Crown copyright and database rights 2024 Ordnance Survey 100035207

Production date: 03 April 2024

Map legend available at:
www.groundsure.com/sites/default/files/groundsure_legend.pdf



Site Details:

34, NASSAU ROAD, BARNES,
LONDON, RICHMOND UPON
THAMES, SW13 9QE

Client Ref: GWPR5909
Report Ref: GS-R7I-VE4-EA3-BPT
Grid Ref: 521771, 176566

Map Name: County Series

Map date: 1938

Scale: 1:10,560

Printed at: 1:10,560



Surveyed 1867
Revised 1938
Edition N/A
Copyright N/A
Levelled N/A



Produced by
Groundsure Insights
T: 08444 159000
E: info@groundsure.com
W: www.groundsure.com

© Crown copyright and database rights 2024 Ordnance Survey 100035207

Production date: 03 April 2024

Map legend available at:
www.groundsure.com/sites/default/files/groundsure_legend.pdf



Site Details:

34, NASSAU ROAD, BARNES,
LONDON, RICHMOND UPON
THAMES, SW13 9QE

Client Ref: GWPR5909
Report Ref: GS-R7I-VE4-EA3-BPT
Grid Ref: 521771, 176566

Map Name: Provisional

Map date: 1947

Scale: 1:10,560

Printed at: 1:10,560



Surveyed 1940
Revised 1947
Edition N/A
Copyright N/A
Levelled N/A



Produced by
Groundsure Insights
T: 08444 159000
E: info@groundsure.com
W: www.groundsure.com

© Crown copyright and database rights 2024 Ordnance Survey 100035207

Production date: 03 April 2024

Map legend available at:
www.groundsure.com/sites/default/files/groundsure_legend.pdf



Site Details:

34, NASSAU ROAD, BARNES,
LONDON, RICHMOND UPON
THAMES, SW13 9QE

Client Ref: GWPR5909
Report Ref: GS-R7I-VE4-EA3-BPT
Grid Ref: 521771, 176566

Map Name: Provisional

Map date: 1958

Scale: 1:10,560

Printed at: 1:10,560



Surveyed 1958
Revised 1958
Edition N/A
Copyright N/A
Levelled N/A



Produced by
Groundsure Insights
T: 08444 159000
E: info@groundsure.com
W: www.groundsure.com

© Crown copyright and database rights 2024 Ordnance Survey 100035207

Production date: 03 April 2024

Map legend available at:
www.groundsure.com/sites/default/files/groundsure_legend.pdf

