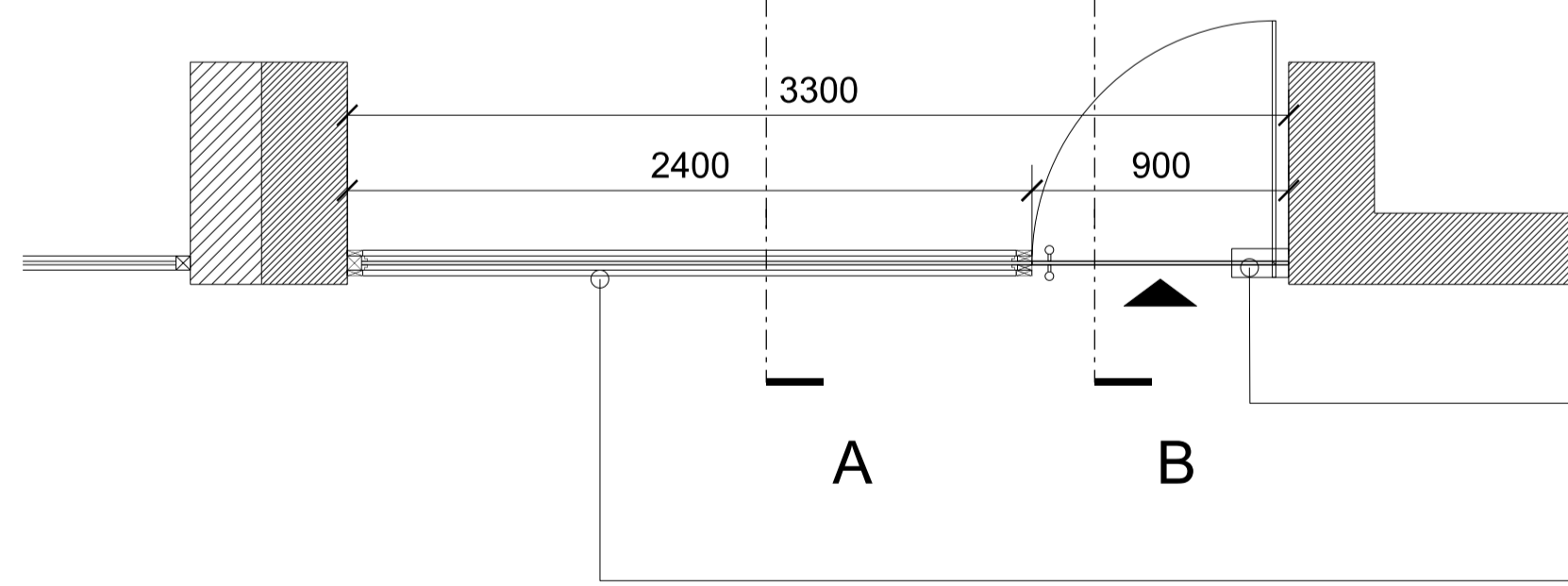




01 FRONT ELEVATION - PROPOSED  
301 SCALE 1:50



04 FLOOR PLAN - PROPOSED  
301 SCALE 1:50

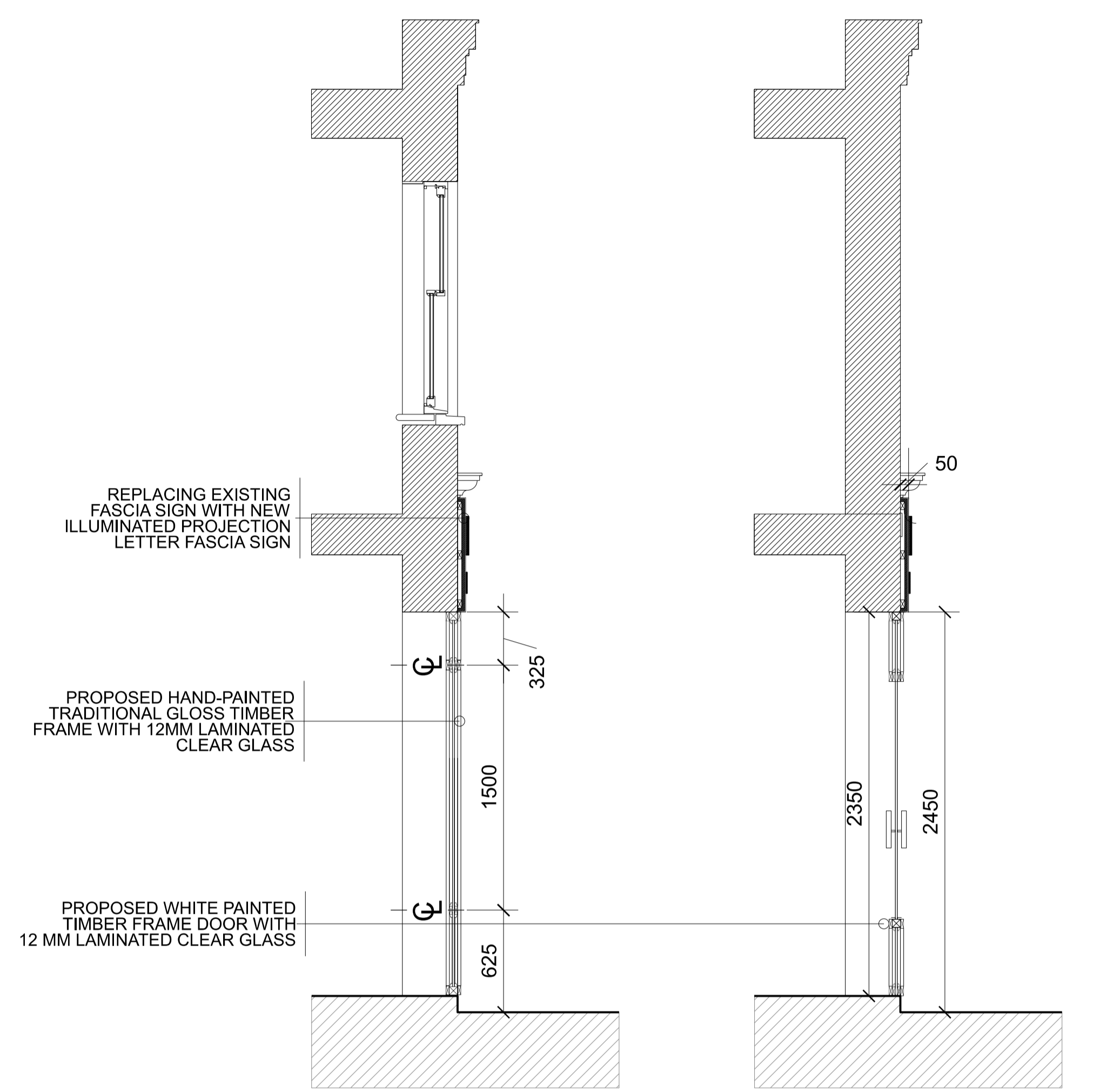
THE EXISTING FASCIA SIGN WILL BE REPLACED WITH A NEW ILLUMINATED PROJECTION LETTER FASCIA SIGN. THE SIGN WILL BE CONSTRUCTED USING A FOLDED 2MM ALUMINIUM PANEL MEASURING 3310MM X 435MM X 50MM DEEP, WITH AN ADDITIONAL 25MM UPSTAND (460MM OVERALL HEIGHT). IT WILL BE POWDER COATED TO A RAL COLOUR AND SUPPLIED WITH TOP AND BOTTOM FIXING RAILS. THE SIGN FACE WILL FEATURE A BUILT UP 0.9MM FLAT FACED DESCALED S/S DETAIL POWDER COATED TO A STANDARD RAL COLOUR 175MM HIGH (ON THE 'S') X 30MM DEEP, FITTED WITH DIFFUSER POLYCARB BACKTRAYS AND INTERNALLY ILLUMINATED WITH COOL WHITE LEDS FOR HALO EFFECT ILLUMINATION, SUPPLIED WITH SPACERS & SCREWS TO SUIT. THE INTERNALLY-ILLUMINATED FASCIA LETTERING IS ESSENTIAL FOR ALIGNING WITH THE NATURE OF THE BUSINESS AND THE DESIGN OF THE BUSINESS MODEL.

THE FASCIA FRAME WILL BE ADJUSTED TO FIT WITHIN A STANDARD-SIZED MOULDED FRAME, MAKING IT CONSISTENT WITH ITS NEIGHBOURING BUILDINGS.

THE SIGN LIGHTING WILL BE VERY MINIMAL AND WILL FOLLOW THE COUNCIL'S RECOMMENDATIONS. TO ENSURE OPTIMAL VISIBILITY, THE SIGN WILL BE INTERNALLY ILLUMINATED USING COOL WHITE LEDS, CREATING A HALO EFFECT. IT WILL BE FITTED WITH A DIFFUSER POLYCARBONATE BACKTRAYS AND SUPPLIED WITH APPROPRIATE SPACERS AND SCREWS FOR INSTALLATION. THE WHITE-SPECTRUM COLOR TEMPERATURE WILL BE NO MORE THAN 2700K (WARM WHITE). THE LED STRIP LIGHT SHALL BE DIFFUSED, ORIENTED, AND SHIELDED TO PROTECT THE HUMAN EYE FROM DIRECT LIGHT WHEN VIEWED FROM THE STREET. USING MATERIALS LIKE OPAL ACRYLIC. ADDITIONALLY, THE STRIP LIGHT WILL BE PAINTED WHITE TO MATCH THE SHOPFRONT COLOR.

PROPOSED WHITE PAINTED TIMBER FRAME DOOR WITH 12 MM LAMINATED CLEAR GLASS. THE POST LETTER BOX WILL BE RETAINED ON THE ENTRANCE DOOR WITHIN THE WHITE PAINTED TIMBER FRAME.  
NOTE: THE ADJACENT STREET FRONT DOOR WILL REMAIN IN ITS TRADITIONAL SHAPE AND WILL BE MAINTAINED IN THE SAME STYLE TO FIT WITH THE BUILDING

THE SHOP FRAME WILL BE HAND-PAINTED TRADITIONAL GLOSS TIMBER FRAME PAINTED IN WHITE WITH PANELLED STALLRISER AND CILL AND PLINTH SKIRT TO MATCH THE EXISTING WHILE RETAINING THE EXISTING CHARACTER AND APPEARANCE OF THE SHOP.



REPLACING EXISTING FASCIA SIGN WITH NEW ILLUMINATED PROJECTION LETTER FASCIA SIGN

PROPOSED HAND-PAINTED TRADITIONAL GLOSS TIMBER FRAME WITH 12MM LAMINATED CLEAR GLASS

PROPOSED WHITE PAINTED TIMBER FRAME DOOR WITH 12 MM LAMINATED CLEAR GLASS

02 SECTION AA - PROPOSED  
301 SCALE 1:50

03 SECTION BB - PROPOSED  
301 SCALE 1:50

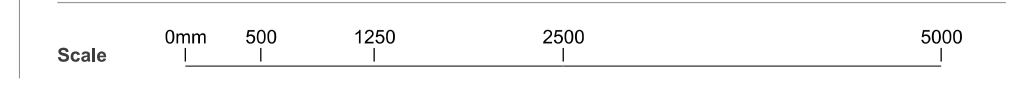
PROPOSED WHITE PAINTED TIMBER FRAME DOOR WITH 12 MM LAMINATED CLEAR GLASS

PROPOSED HAND-PAINTED TRADITIONAL GLOSS TIMBER FRAME WITH PAINTED WHITE PANELLED STALLRISER WITH A CILL AND PLINTH SKIRT.

NOTES

Do not scale from this drawing. Use marked dimensions only. Should any discrepancies be noted, please inform immediately.

Rev:	Description:	Date:	Drw:	Chk:



the boathouse design studio  
27 ferry road teddington tw11 9nn  
joshua@maa-architects.com

Client: Mr. Ozhan Ouyan			
Project Name: Serpil Aesthetics Skin Clinic, 97 High Street, Teddington, London, TW11 8HG			
Drawing Title: Proposed Shop Front Drawings			
Drawing Status: Planning	Status Code: ZDD01	Project No: ZDD01	Scale at A1: 1:50
Drawing No: ZDD01-301	Revision: P02	Date: JUL 24	Scale at A3: 1:100