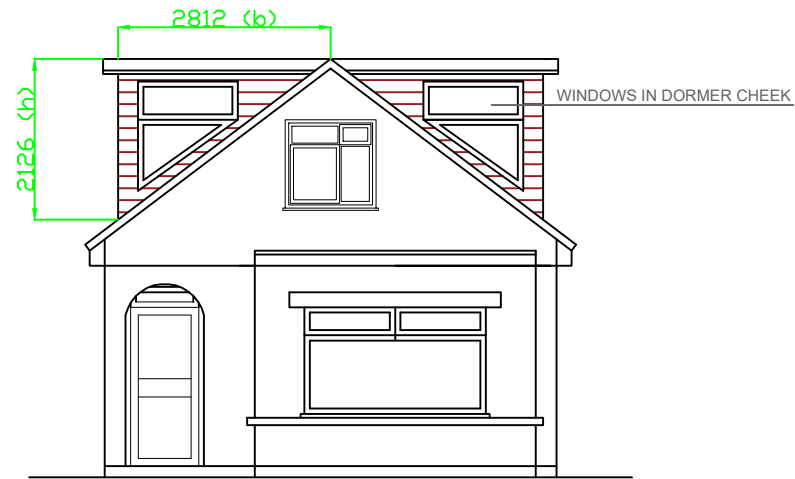


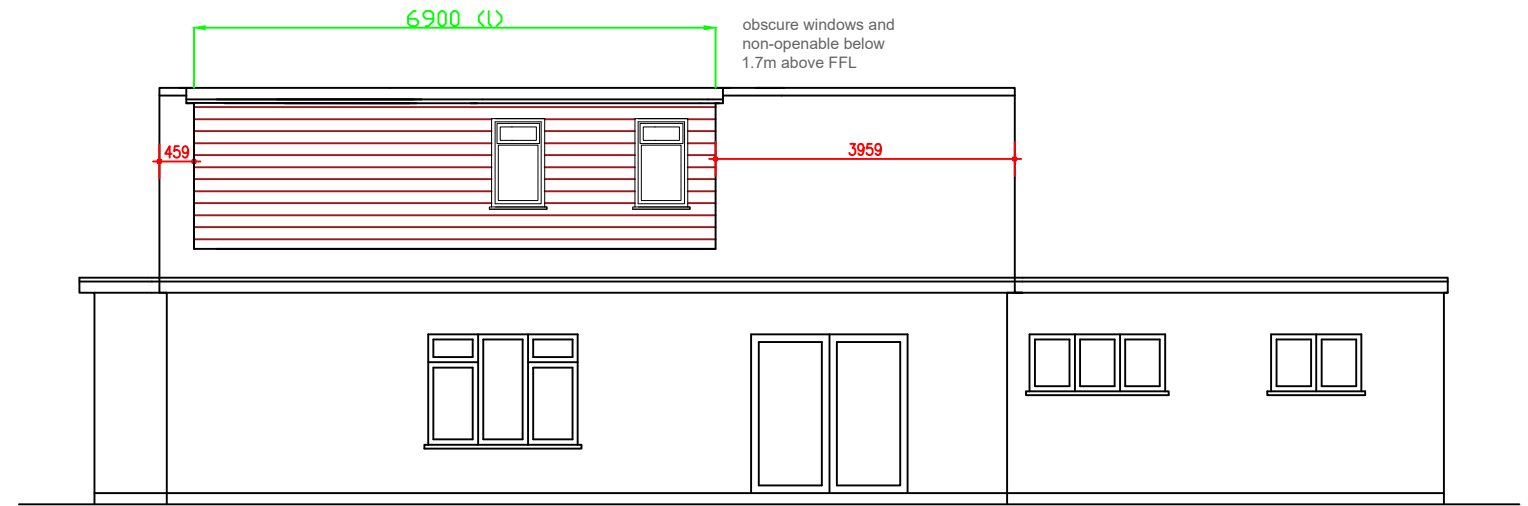


SCALE - 1 : 100.

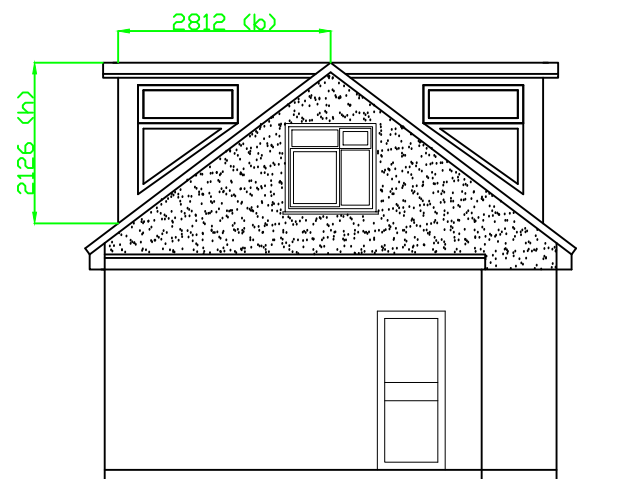
DORMER VOLUME
 VOLUME = 1/2 (b x h x l)
 VOLUME = 1/2 (2.812 x 2.126 x 6.9
 VOLUME = 20.63 m³ x 2 = 41.3 m³



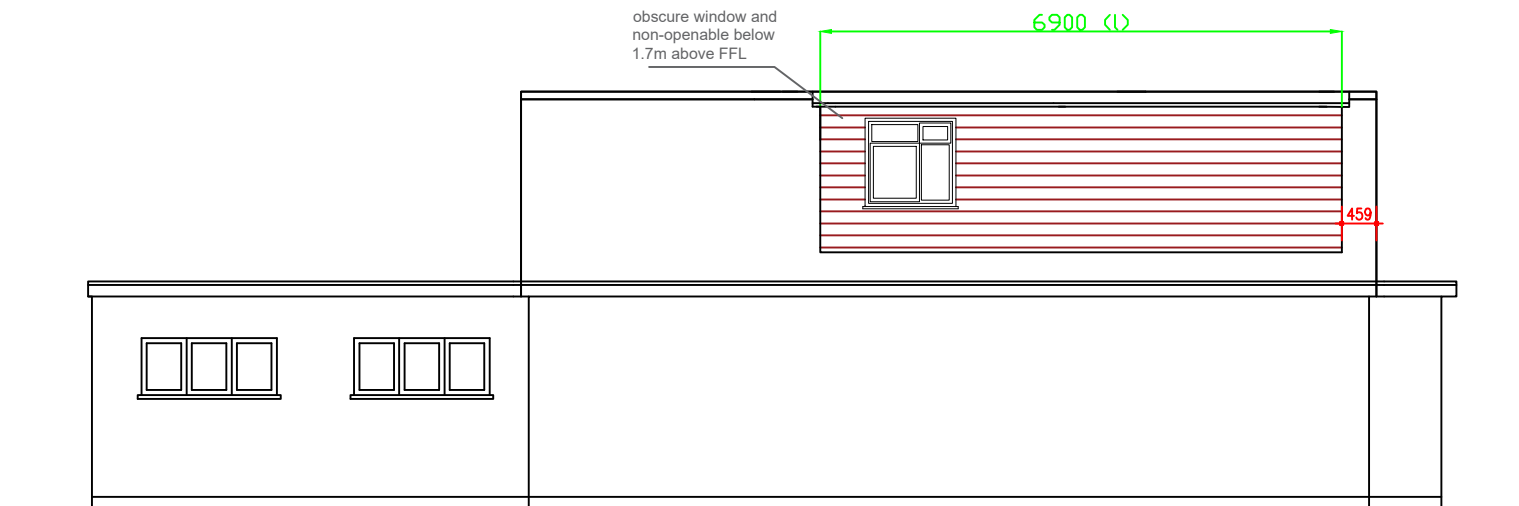
PROPOSED FRONT ELEVATION



PROPOSED SIDE ELEVATION 1



PROPOSED REAR ELEVATION



PROPOSED SIDE ELEVATION 2