

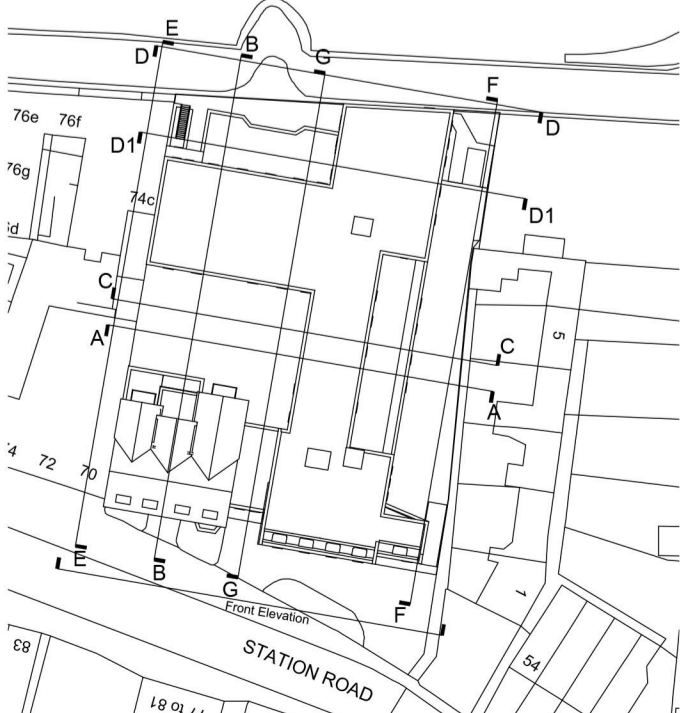
Revisions:	Drawn / Chkd:	Date:
B Planning issue	AM	30.08.19
C Revisions to existing building	AM	12.11.19
D Parking undercroft amended	PC	25.11.19
E Privacy screen added	PC	27.11.19
F East elevation revised	AM	20.12.19
G East elevation superseded See dwg PL_027	MC	22.05.20
H East elevation amended	MC	27.05.20
I East elevation amended	MC	21.07.20
J Glazing location to terrace updated	TG	02.03.21



Elevation E - West Elevation
1:100



Elevation F - East Elevation
1:100



Key Plan
1:1000

Client:
 CINNAMON CARE COLLECTION



Project:
 STATION ROAD, HAMPTON

24 Church St West,
 Woking, Surrey,
 GU21 6HT

01483 494 350

info@prc-group.com
 www.prc-group.com

Drawing Title:
 Proposed Elevations
 Sheet 4

Scale @ A1: 1:200
 Checked by: 10.08.19

Job No: 11045
 Stage: PL 023
 Drawing No: Rev: J

Issue Status:
 Construction
 Information
 Tender
 Preliminary
 Approval

Architecture
 Planning
 Master Planning
 Urban Design
 Interiors
 Landscape

Offices
 Woking
 London
 Milton Keynes
 Warsaw

- Revision H & I
- Banding at eaves /parapet level carried around building
 - Slate roof added with parapet wall to match roof to the north
 - Banding added around windows over undercroft
 - Recess detail created for downpipes
 - Brick wall to terrace replaced with slate mansard

