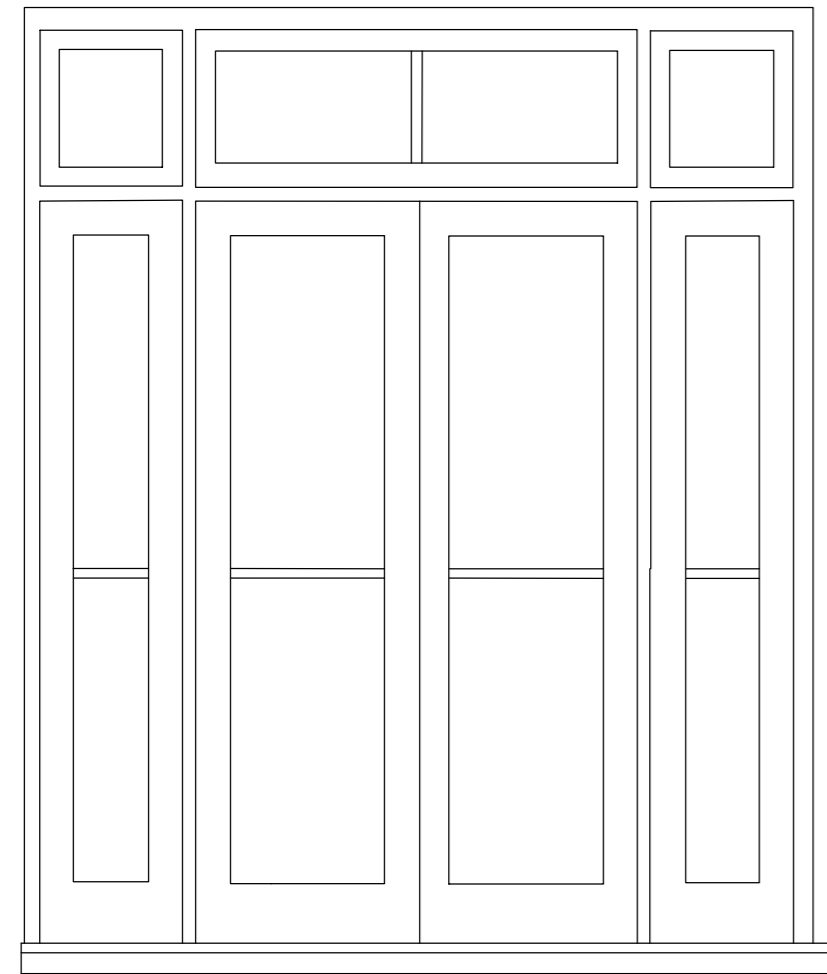
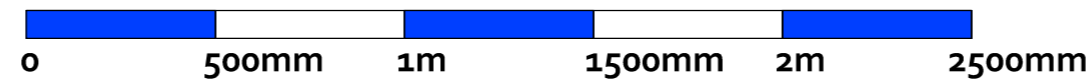
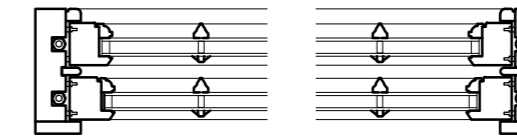


NOTES

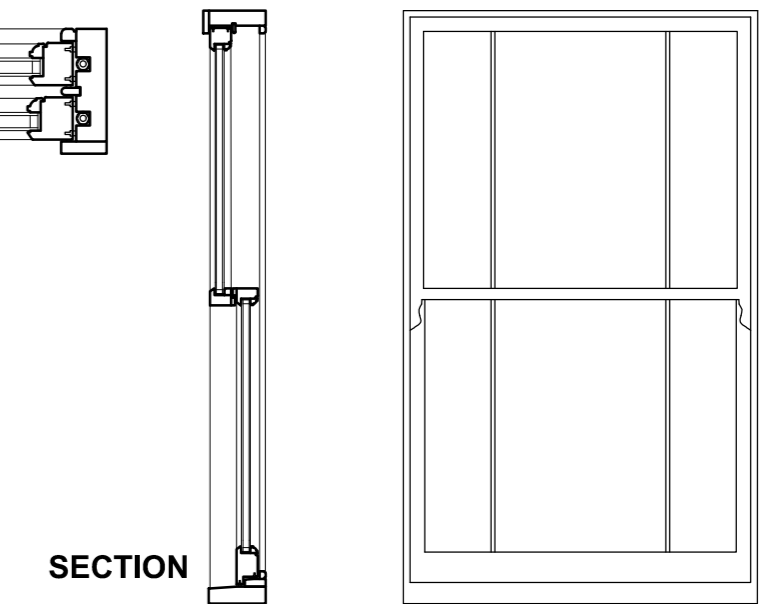
THIS DRAWING IS THE COPYRIGHT OF THE ARCHITECT



NEW FRENCH DOORS AT GROUND FLOOR REAR:
 DOUBLE GLAZED UNITS IN WHITE PAINTED TIMBER (STANDARD DOUBLE GLAZING SYSTEM)
 DESIGN BASED ON EXISTING UNITS AT GROUND FLOOR REAR OF EXISTING SIDE EXTENSION



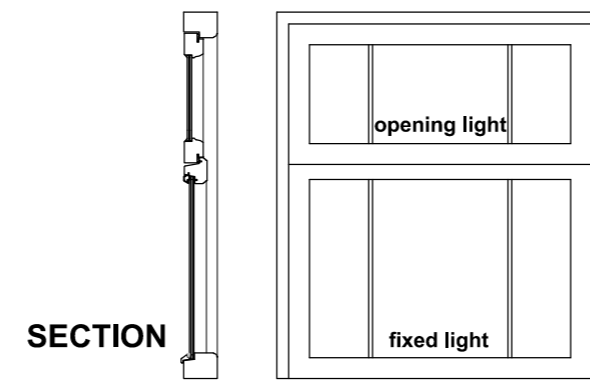
PLAN 1:10 SCALE



SECTION

ELEVATION

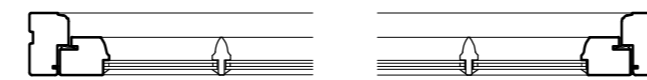
2 No. NEW SASH WINDOWS ON REAR ELEVATION:
 SASH WINDOWS IN WHITE PAINTED HARDWOOD.
 WINDOW DESIGN TO MATCH EXISTING SASHES ON MAIN HOUSE.
 (STANDARD DOUBLE GLAZING SYSTEM)



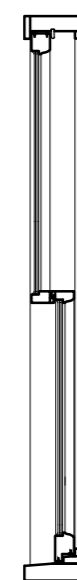
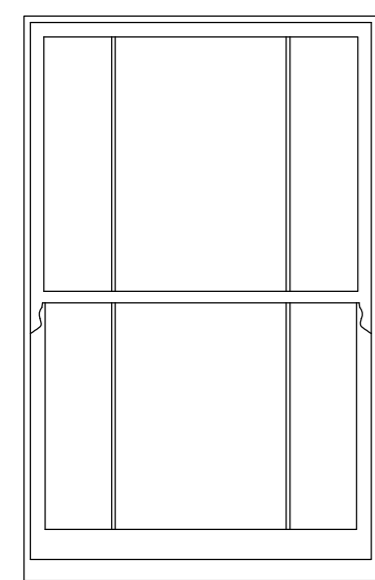
SECTION

ELEVATION

ENLARGED BATHROOM WINDOW ON FLANK ELEVATION:
 OBSCURED GLAZED WINDOW WITH OPENING TOP LIGHT
 (OPENING LIGHT IS 1700mm ABOVE FFL)
 WINDOW IN WHITE PAINTED HARDWOOD WITH SLIMLINE
 DOUBLE GLAZING (4mm OUTER PANE/6mm AIR GAP/4mm INNER PANE)



PLAN 1:10 SCALE
 SLIMLINE GLAZED



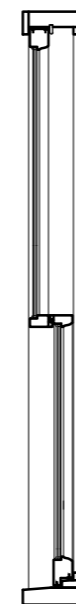
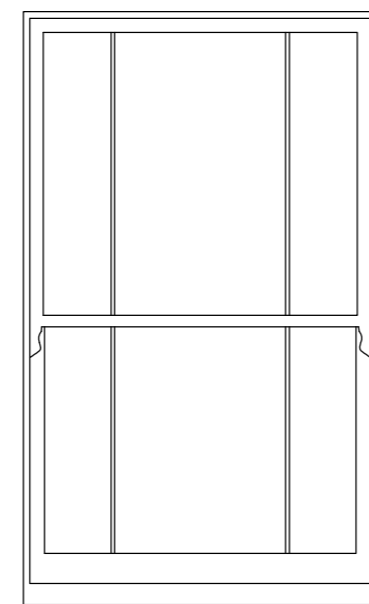
SECTION
 SLIMLINE GLAZED

ELEVATION

2 No. NEW SASH WINDOWS ON FRONT ELEVATION:
 SASH WINDOWS IN WHITE PAINTED HARDWOOD.
 WINDOW DESIGN TO MATCH EXISTING SASHES ON MAIN HOUSE.
 DOUBLE GLAZED WITH SLIMLINE SYSTEM - 4mm THICK INNER AND OUTER PANES
 WITH 6mm AIR GAP



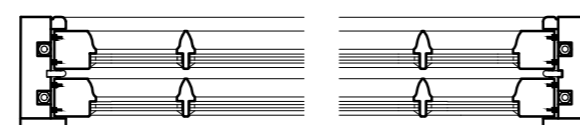
PLAN 1:10 SCALE
 SLIMLINE GLAZED



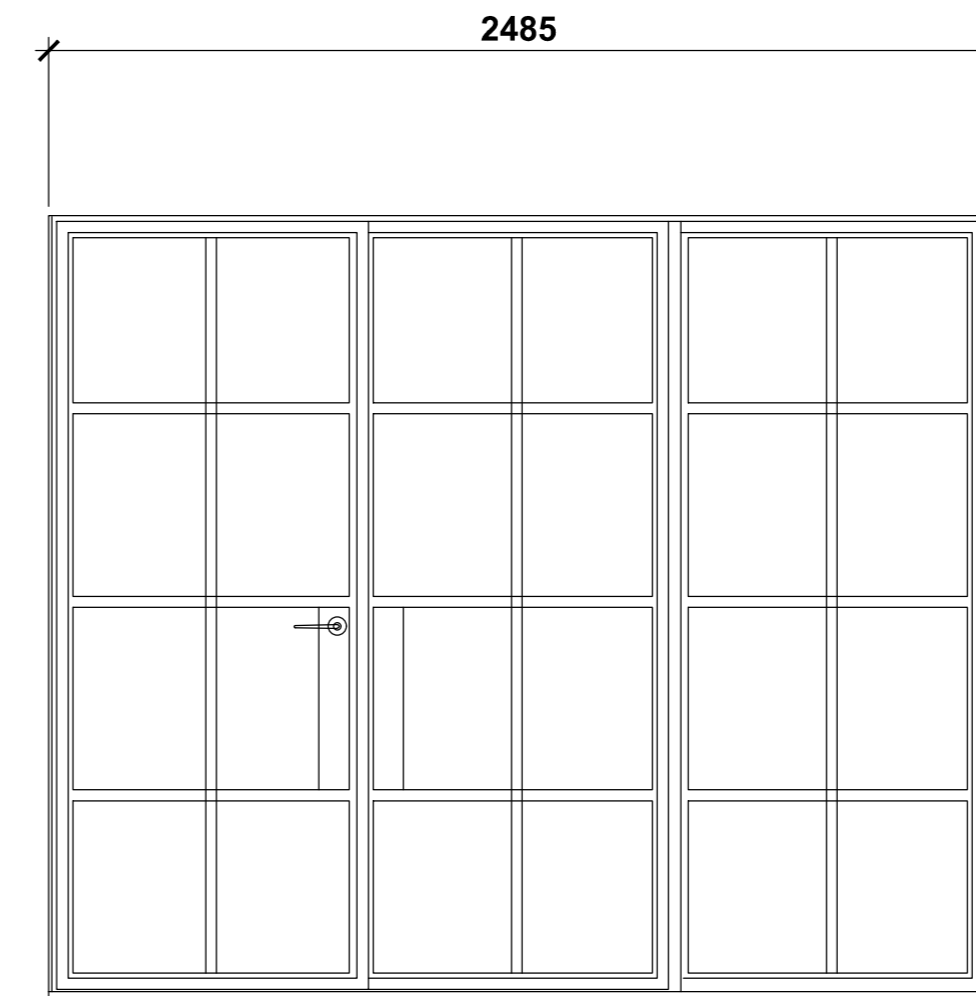
SECTION
 SLIMLINE GLAZED

ELEVATION

1 No. NEW FIXED SASH WINDOW ON FLANK ELEVATION:
 SASH WINDOW IN WHITE PAINTED HARDWOOD.
 WINDOW DESIGN TO MATCH EXISTING SASHES ON MAIN HOUSE.
 OBSCURED GLAZING - DOUBLE GLAZED WITH SLIMLINE SYSTEM - 4mm THICK
 INNER AND OUTER PANES WITH 6mm AIR GAP



PLAN 1:10 SCALE
 SLIMLINE GLAZED



2 No. NEW FRENCH DOORS AT LOWER GROUND FLOOR REAR:
 TYPICAL ELEVATION OF BLACK FINISH CRITTALL STEEL FRAMED DOORS & SIDELIGHT

REV	DATE	DESCRIPTION
Oriel House 26 The Quadrant Richmond Surrey TW9 1DL Tel: 0203 846 6426 htparchitecture@gmail.com		

PROJECT
 50 THE VINEYARD
 RICHMOND SURREY
 TW10 6AT

DRAWING TITLE
 PROPOSED EXTENSION & ALTERATIONS:
 LARGE SCALE ELEVATIONS OF NEW DOORS &
 WINDOWS

SCALE	DATE	DRAWN BY
1:20@A2	AUG 24	
JOB No	DRAWING No	
18025	TV/10	