



info@akart.co.uk

Unit 119 Omega Works,  
4 Roach Road,  
London, England, E3 2PF

+44 7456159367

### EFES PREMIUM RICHMOND LONDON

CLIENT EFES PREMIUM  
PROJECT LOCATION 11 King St. Richmond,  
TW9 1ND, UK

DRAWING NO FP07  
SCALE 1/150  
PAPER SIZE A3  
DATE 05.08.2024

### EXISTING & PROPOSED FRONT ELEVATIONS & PROPOSED SIGN

#### SUBMISSION & REVISION

DATE	DESCRIPTION
05.08.2024	Planning Application Submission

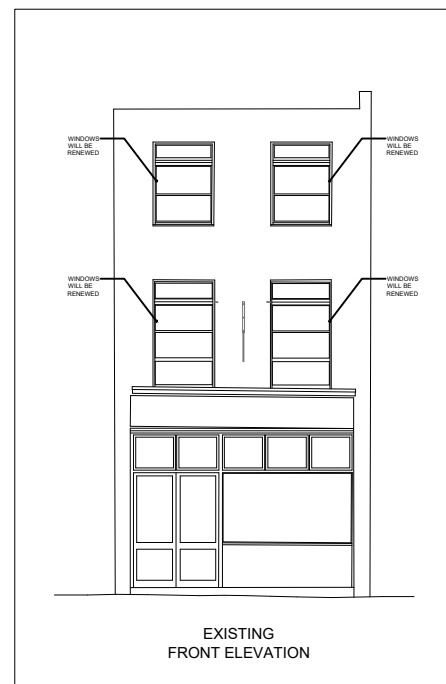
#### GENERAL NOTES

- DO NOT SCALE FROM DRAWINGS FOR CONSTRUCTION PURPOSES. DRAWING IS FOR DESIGN INTENT ONLY.
- CONTRACTOR/SUPPLIER/MANUFACTURER IS OBLIGED TO REPORT ANY ERRORS, DISCREPANCIES AND OMISSIONS TO DESIGNERS.
- AKART IS NOT RESPONSIBLE FOR CO-ORDINATION OF MECHANICAL AND ELECTRICAL SERVICES DRAWINGS OR INFORMATION.
- ALL CONSULTANTS INFORMATION TO BE REFERRED TO, TO ENSURE COMPLIANCE WITH BUILDING REGULATIONS AND CODES.
- ALL DRAWINGS AND DESIGNS ARE COPYRIGHT TO AKART AND MAY NOT BE REPRODUCED OR COPIED WITHOUT PRIOR AGREEMENT WITH AKART.
- ALL DESIGN CONCEPTS ARE THE SOLE PROPERTY OF AKART AND MAY NOT BE ADAPTED, COPIED OR REPRODUCED WITH OUR WRITTEN PERMISSION OF AKART.
- THESE DRAWINGS ARE SUBJECT TO UPDATE, REVISIONS AND CHANGE BASED ON ANY RECOMMENDATION FROM STATUTORY LOCAL AUTHORITY
- ALL MATERIALS & PRODUCTS ARE FOR REFERENCE INTENT ONLY. CLIENT CAN CHOOSE SIMILAR OR DIFFERENT MATERIALS/PRODUCTS FROM THEIR SUPPLIERS.
- CONTRACTOR/SUPPLIER/MANUFACTURER MUST ORDER MATERIAL SAMPLES AND PRODUCT SAMPLES FOR DEMO. ALL MATERIALS PHYSICAL FORMS AND PRODUCTS MUST BE APPROVED BY CLIENT BEFORE ORDER. DIGITAL IMAGES MIGHT BE DIFFERENT FROM PHYSICAL MATERIALS.
- ALL MATERIAL SAMPLES, PRODUCTS SAMPLES, CALCULATIONS AND DIMENSIONS MUST BE CHECKED ON SITE BEFORE ORDER.
- AKART IS NOT RESPONSIBLE FOR ANY MATERIAL AND PRODUCT ORDER, SHIPMENT, MONTAGE AND DEFECTS.
- CONTRACTOR TO PROVIDE ROD/SHOP DRAWINGS PRIOR TO MANUFACTURE & CONSTRUCTION
- THIS COPY HAS BEEN MADE BY AKART AUTHORIZATION PURSUANT TO SECTION 47 OF THE COPYRIGHT DESIGNS AND PATENTS ACT 1988. UNLESS THAT ACT PROVIDES A RELEVANT EXCEPTION TO COPYRIGHT. THE COPY MUST NOT BE COPIED WITHOUT THE PRIOR PERMISSION OF THE COPYRIGHT.

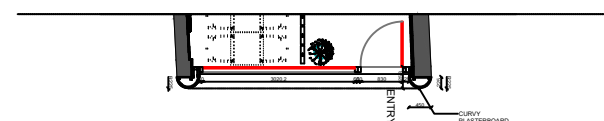
SITE PICTURE - 2024



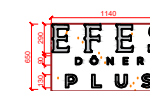
SITE PICTURE - 2024



EXISTING  
FRONT ELEVATION

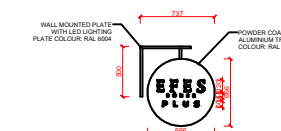


1- Fascia Sign: "EFES DÖNER PLUS"  
"EFES" lettering: height 29cm,  
"DÖNER" lettering: height 9 cm,  
"PLUS" lettering: height 13cm.  
20mm acrylic base raised with locator.  
Fascia 1.5mm gold brass metal.  
3200k lumen warm light led illuminated  
through an acrylic base for halo effect.  
LEDs will be powered by 110-240 watt  
driver and 12v output.



FASCIA SIGN (NTS)

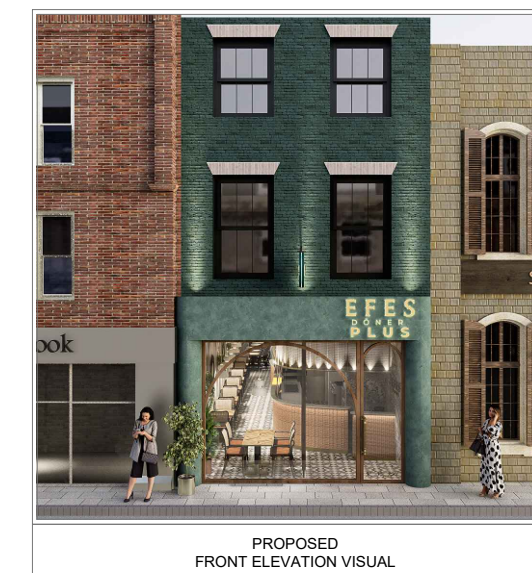
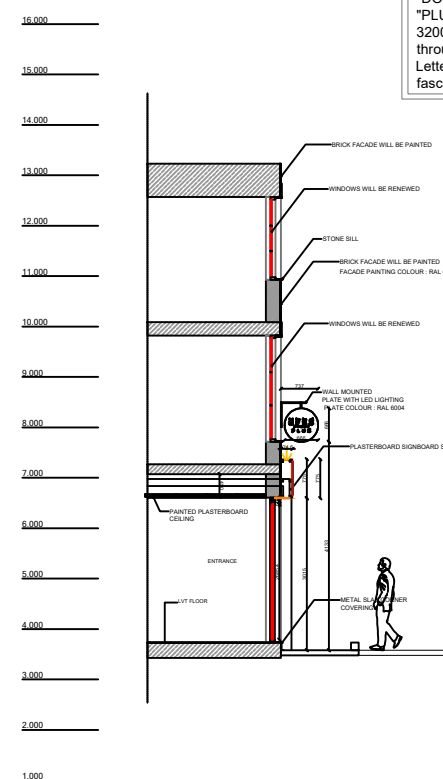
2- Projecting Sign: "EFES DÖNER PLUS"  
RAL 6012 Powder Coated Aluminium Tray  
Sign will be fixed with anchor bolts to directly  
to wall. Both sided fascia.  
"EFES" lettering: height 12cm,  
"DÖNER" lettering: height 4.5cm,  
"PLUS" lettering: height 6cm.  
3200k lumen warm light led illuminated  
through an acrylic base for halo effect.  
Letterings on sign are made of gold brass  
fascia raised on 1cm acrylics.



PROJECTING SIGN (NTS)



PROPOSED  
FRONT ELEVATION



PROPOSED  
FRONT ELEVATION VISUAL

PROPOSED FRONT ELEVATION & SIGN  
SCALE 1:150

