



info@akart.co.uk

Unit 119 Omega Works,
4 Roach Road,
London, England, E3 2PF

+44 7456159367

EFES PREMIUM RICHMOND LONDON

CLIENT EFES PREMIUM
PROJECT 11 King St. Richmond,
LOCATION TW9 1ND, UK

DRAWING NO FP09
SCALE 1/150
PAPER SIZE A3
DATE 05.08.2024

SECTIONS FOR THE PROPOSED SKYLIGHTS

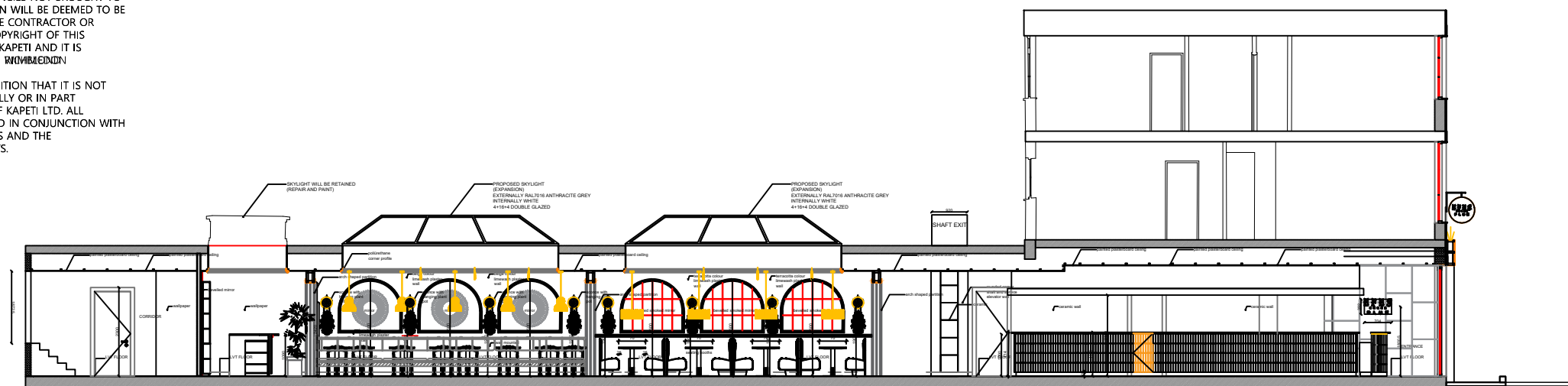
SUBMISSION & REVISION

DATE	DESCRIPTION
05.08.2024	Planning Application Submission

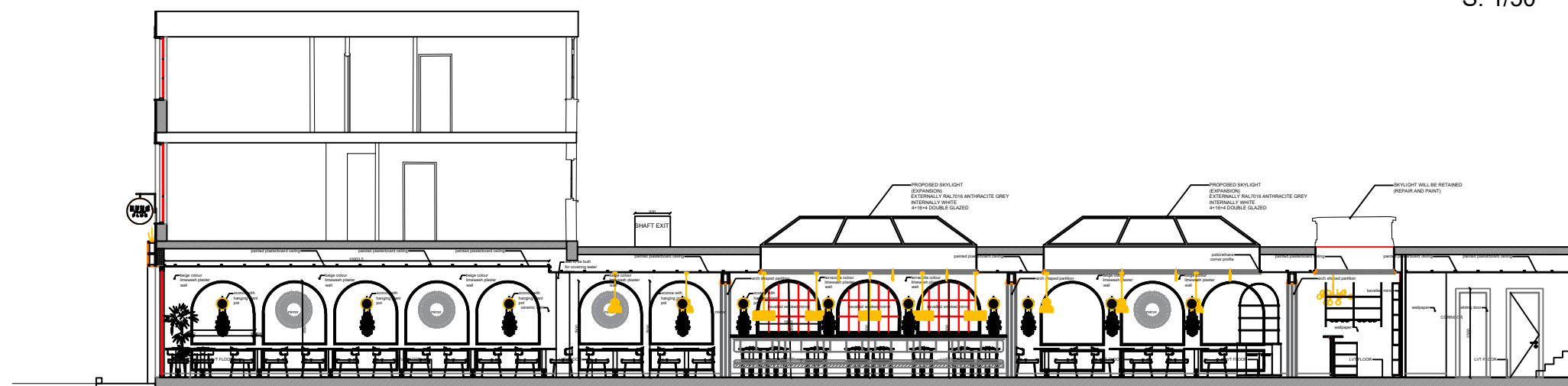
GENERAL NOTES

- DO NOT SCALE FROM DRAWINGS FOR CONSTRUCTION PURPOSES. DRAWING IS FOR DESIGN INTENT ONLY.
- CONTRACTOR/SUPPLIER/MANUFACTURER IS OBLIGED TO REPORT ANY ERRORS, DISCREPANCIES AND OMISSIONS TO DESIGNERS.
- AKART IS NOT RESPONSIBLE FOR CO-ORDINATION OF MECHANICAL AND ELECTRICAL SERVICES DRAWINGS OR INFORMATION.
- ALL CONSULTANTS INFORMATION TO BE REFERRED TO, TO ENSURE COMPLIANCE WITH BUILDING REGULATIONS AND CODES.
- ALL DRAWINGS AND DESIGNS ARE COPYRIGHT TO AKART AND MAY NOT BE REPRODUCED OR COPIED WITHOUT PRIOR AGREEMENT WITH AKART.
- ALL DESIGN CONCEPTS ARE THE SOLE PROPERTY OF AKART AND MAY NOT BE ADAPTED, COPIED OR REPRODUCED WITH OUR WRITTEN PERMISSION OF AKART.
- THESE DRAWINGS ARE SUBJECT TO UPDATE, REVISIONS AND CHANGE BASED ON ANY RECOMMENDATION FROM STATUTORY LOCAL AUTHORITY
- ALL MATERIALS & PRODUCTS ARE FOR REFERENCE INTENT ONLY. CLIENT CAN CHOOSE SIMILAR OR DIFFERENT MATERIALS/PRODUCTS FROM THEIR SUPPLIERS.
- CONTRACTOR/SUPPLIER/MANUFACTURER MUST ORDER MATERIAL SAMPLES AND PRODUCT SAMPLES FOR DEMO. ALL MATERIALS PHYSICAL FORMS AND PRODUCTS MUST BE APPROVED BY CLIENT BEFORE ORDER. DIGITAL IMAGES MIGHT BE DIFFERENT FROM PHYSICAL MATERIALS
- ALL MATERIAL SAMPLES, PRODUCTS SAMPLES, CALCULATIONS AND DIMENSIONS MUST BE CHECKED ON SITE BEFORE ORDER.
- AKART IS NOT RESPONSIBLE FOR ANY MATERIAL AND PRODUCT ORDER, SHIPMENT, MONTAGE AND DEFECTS.
- CONTRACTOR TO PROVIDE ROD/SHOP DRAWINGS PRIOR TO MANUFACTURE & CONSTRUCTION
- THIS COPY HAS BEEN MADE BY AKART AUTHORIZATION PURSUANT TO SECTION 47 OF THE COPYRIGHT DESIGNS AND PATENTS ACT 1988. UNLESS THAT ACT PROVIDES A RELEVANT EXCEPTION TO COPYRIGHT. THE COPY MUST NOT BE COPIED WITHOUT THE PRIOR PERMISSION OF THE COPYRIGHT.

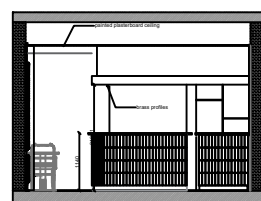
PLEASE VERIFY ALL DIMENSIONS ON SITE. DO NOT SCALE FROM DRAWINGS. LARGER SCALE DRAWINGS TAKE PRECEDENCE OVER SMALLER SCALE DRAWINGS. ANY DISCREPANCIES NOT BROUGHT TO OUR IMMEDIATE ATTENTION WILL BE DEEMED TO BE THE RESPONSIBILITY OF THE CONTRACTOR OR FABRICATOR INVOLVED. COPYRIGHT OF THIS DRAWING IS RESERVED BY KAPETI AND IT IS CREATED ONLY FOR USE IN RICHMOND RESTAURANT PROJECT.
IT IS ISSUED ON THE CONDITION THAT IT IS NOT REPRODUCED EITHER WHOLLY OR IN PART WITHOUT THE CONSENT OF KAPETI LTD. ALL DRAWINGS ARE TO BE READ IN CONJUNCTION WITH THE SCHEDULE OF FINISHES AND THE SPECIFICATION DOCUMENTS.



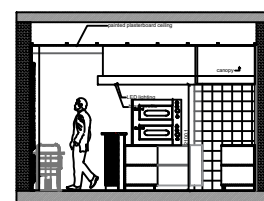
SECTION A-A
S: 1/50



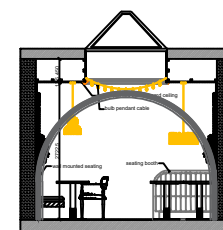
SECTION B-B
S: 1/50



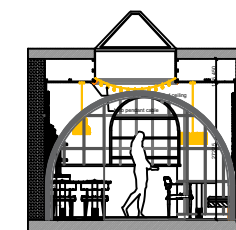
SECTION C-C
S: 1/50



SECTION D-D
S: 1/50

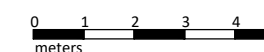


SECTION E-E
S: 1/50



SECTION F-F
S: 1/50

SECTIONS FOR THE PROPOSED SKYLIGHTS SCALE 1:150





info@akart.co.uk

Unit 119 Omega Works,
4 Roach Road,
London, England, E3 2PF

+44 7456159367

EFES PREMIUM RICHMOND LONDON

CLIENT EFES PREMIUM
PROJECT 11 King St. Richmond,
LOCATION TW9 1ND, UK

DRAWING NO FP09
SCALE 1/150
PAPER SIZE A3
DATE 05.08.2024

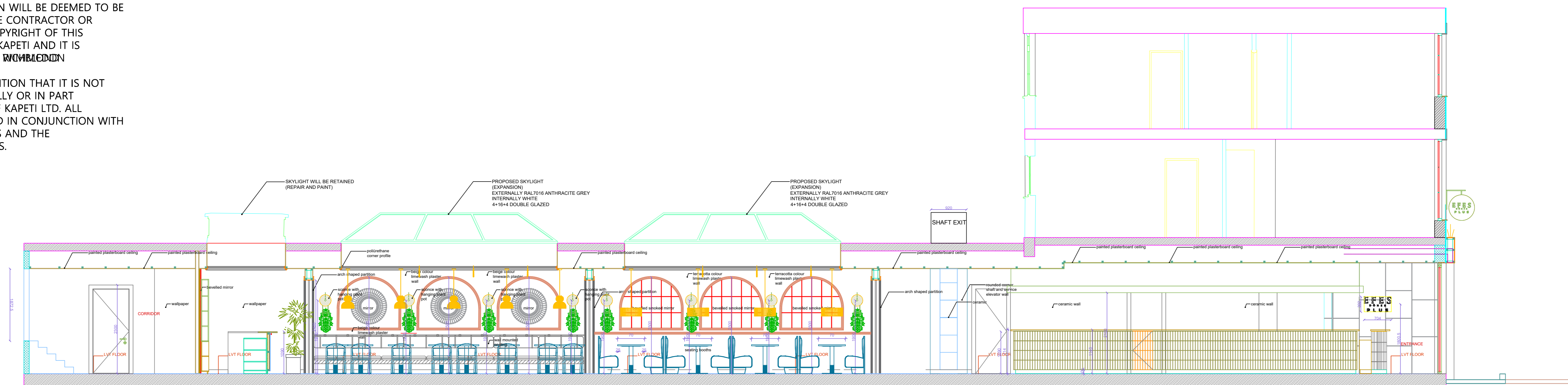
SECTIONS FOR THE PROPOSED SKYLIGHTS

SUBMISSION & REVISION
DATE 05.08.2024 DESCRIPTION Planning Application Submission

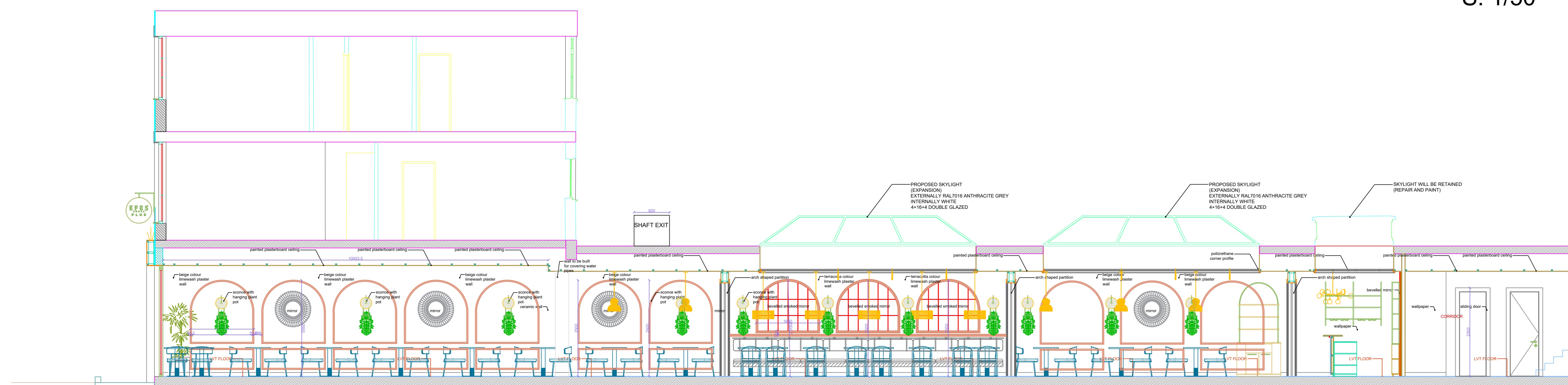
GENERAL NOTES

- DO NOT SCALE FROM DRAWINGS FOR CONSTRUCTION PURPOSES. DRAWING IS FOR DESIGN INTENT ONLY.
- CONTRACTOR/SUPPLIER/MANUFACTURER IS OBLIGED TO REPORT ANY ERRORS, DISCREPANCIES AND OMISSIONS TO DESIGNERS.
- AKART IS NOT RESPONSIBLE FOR CO-ORDINATION OF MECHANICAL AND ELECTRICAL SERVICES DRAWINGS OR INFORMATION.
- ALL CONSULTANTS INFORMATION TO BE REFERRED TO, TO ENSURE COMPLIANCE WITH BUILDING REGULATIONS AND CODES.
- ALL DRAWINGS AND DESIGNS ARE COPYRIGHT TO AKART AND MAY NOT BE REPRODUCED OR COPIED WITHOUT PRIOR AGREEMENT WITH AKART.
- ALL DESIGN CONCEPTS ARE THE SOLE PROPERTY OF AKART AND MAY NOT BE ADAPTED, COPIED OR REPRODUCED WITH OUR WRITTEN PERMISSION OF AKART.
- THESE DRAWINGS ARE SUBJECT TO UPDATE, REVISIONS AND CHANGE BASED ON ANY RECOMMENDATION FROM STATUTORY LOCAL AUTHORITY
- ALL MATERIALS & PRODUCTS ARE FOR REFERENCE INTENT ONLY. CLIENT CAN CHOOSE SIMILAR OR DIFFERENT MATERIALS/PRODUCTS FROM THEIR SUPPLIERS.
- CONTRACTOR/SUPPLIER/MANUFACTURER MUST ORDER MATERIAL SAMPLES AND PRODUCT SAMPLES FOR DEMO. ALL MATERIALS PHYSICAL FORMS AND PRODUCTS MUST BE APPROVED BY CLIENT BEFORE ORDER. DIGITAL IMAGES MIGHT BE DIFFERENT FROM PHYSICAL MATERIALS.
- ALL MATERIAL SAMPLES, PRODUCTS SAMPLES, CALCULATIONS AND DIMENSIONS MUST BE CHECKED ON SITE BEFORE ORDER.
- AKART IS NOT RESPONSIBLE FOR ANY MATERIAL AND PRODUCT ORDER, SHIPMENT, MONTAGE AND DEFECTS.
- CONTRACTOR TO PROVIDE ROD/SHP DRAWINGS PRIOR TO MANUFACTURE & CONSTRUCTION
- THIS COPY HAS BEEN MADE BY AKART AUTHORIZATION PURSUANT TO SECTION 47 OF THE COPYRIGHT DESIGNS AND PATENTS ACT 1988. UNLESS THAT ACT PROVIDES A RELEVANT EXCEPTION TO COPYRIGHT. THE COPY MUST NOT BE COPIED WITHOUT THE PRIOR PERMISSION OF THE COPYRIGHT.

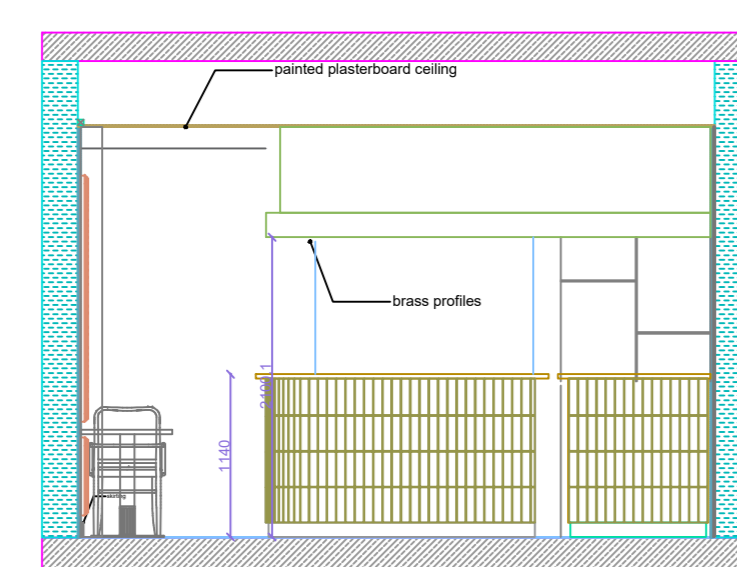
PLEASE VERIFY ALL DIMENSIONS ON SITE. DO NOT SCALE FROM DRAWINGS. LARGER SCALE DRAWINGS TAKE PRECEDENCE OVER SMALLER SCALE DRAWINGS. ANY DISCREPANCIES NOT BROUGHT TO OUR IMMEDIATE ATTENTION WILL BE DEEMED TO BE THE RESPONSIBILITY OF THE CONTRACTOR OR FABRICATOR INVOLVED. COPYRIGHT OF THIS DRAWING IS RESERVED BY KAPETI AND IT IS CREATED ONLY FOR USE IN WIMBORNE RESTAURANT PROJECT.
IT IS ISSUED ON THE CONDITION THAT IT IS NOT REPRODUCED EITHER WHOLLY OR IN PART WITHOUT THE CONSENT OF KAPETI LTD. ALL DRAWINGS ARE TO BE READ IN CONJUNCTION WITH THE SCHEDULE OF FINISHES AND THE SPECIFICATION DOCUMENTS.



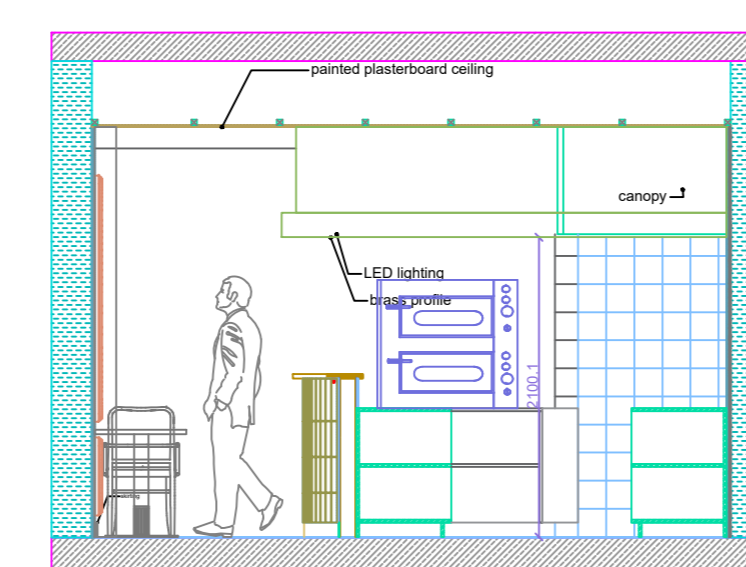
SECTION A-A
S: 1/50



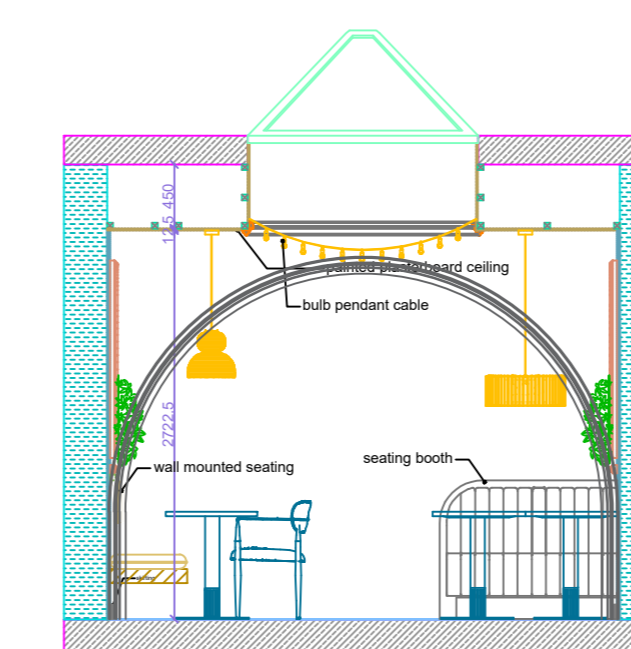
SECTION B-B
S: 1/50



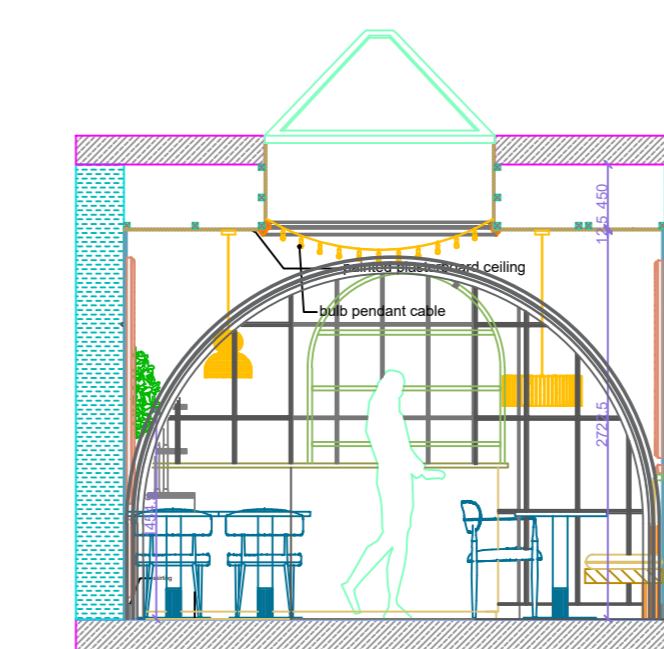
SECTION C-C
S: 1/50



SECTION D-D
S: 1/50



SECTION E-E
S: 1/50



SECTION F-F
S: 1/50

SECTIONS FOR THE PROPOSED SKYLIGHTS SCALE 1:150

