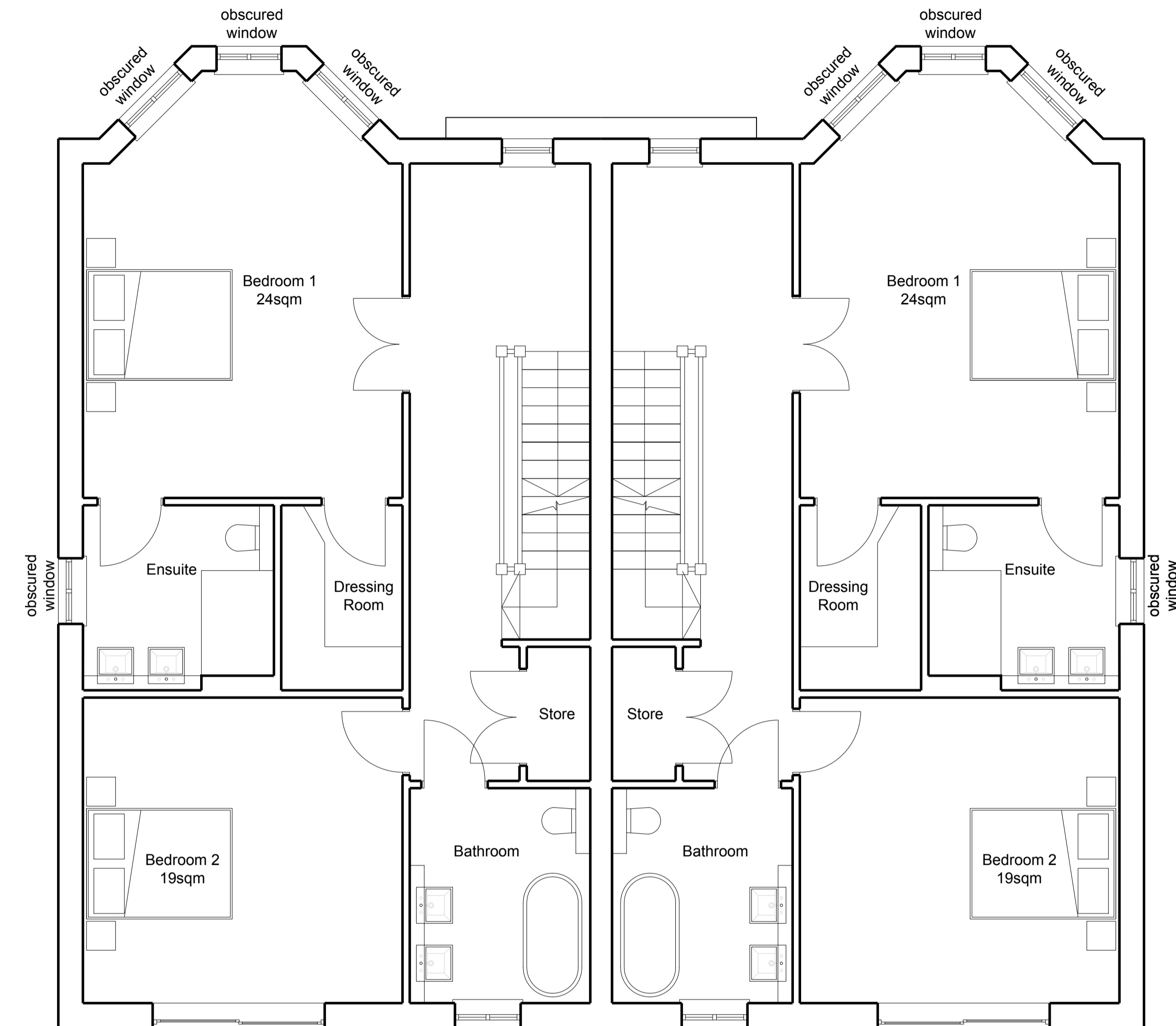


Ground Floor



First Floor

LOLLY

Studio Lolly Ltd
71-75 Shelton Street, Covent Garden,
London, WC2H 9JQ

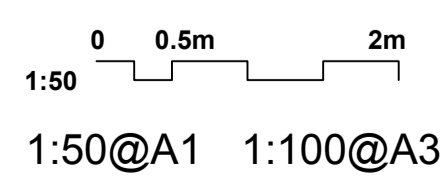
Notes:

1. Do not scale from this drawing
2. All dimensions are in millimetres unless otherwise stated
3. Drawing based on survey information by others
4. Contractors are not to scale dimensions from this drawing
5. All existing dimensions and conditions to be checked on site and the architect informed of any errors, omissions, or discrepancies
6. Drawings should always be printed out in colour
7. This drawing is to be read in conjunction with all other relevant drawings, reports, and specifications
8. The Architect retains copyright of this drawing. It may not be copied, altered or reproduced in any way without their written authority.

North:



Scale:



Date: 25.10.21

Status: FOR COMMENT

- Revision:
- A - Planning - 01.11.21
 - B - For Comment - 30.03.22
 - C - Planning - 12.05.22
 - D - Planning - 20.05.22
 - E - Planning - 04.10.22
 - F - Draft - 14.08.24
 - G - Planning - 19.08.24

Project
Amyand Park Road

Drawing title
Ground & First Floor Plans
Drawing no.
STL-21122-PA-05-100_REV G