

**Fire Safety Strategy
London Plan Policy D12(A)**

Erection of a golf ball stop netting measuring 7.4 metres in height
and 30 metres in length

**STRAWBERRY HILL GOLF CLUB,
WELLESLEY ROAD, TWICKENHAM,
TW2 5SD**



RTPI

mediation of space - making of place

Members of the Royal Town Planning Institute

Registered in England 7911049 at 32 Woodstock Grove, Shepherds Bush, London W12 8LE

CONTENTS

- 1 Introduction
- 2 London Plan Policy D12 (A) – Fire Safety
- 3 Comments

1. Introduction

- 1.1. This Fire Safety Strategy has been prepared by MZA Planning on behalf of our client in response to Policy D12 (A) (Fire Safety) of the London Plan (2021) and in support of the associated planning application for the erection of a golf ball stop netting measuring 7.4 metres in height and 30 metres in length at Strawberry Hill Golf Club.

2. London Plan Policy D12 (A) – Fire safety

- 2.1. Policy D12A states: *In the interests of fire safety and to ensure the safety of all building users, development proposals must achieve the highest standards of fire safety and ensure that they:*
1. *Identify suitably positioned unobstructed outside space:*
 - a. *For fire appliances to be positioned on*
 - b. *Appropriate for use as an evacuation assembly point*
 2. *Are designed to incorporate appropriate features which reduce the risk to life and the risk of serious injury in the event of a fire; including appropriate fire alarm systems and passive and active fire safety measures.*
 3. *Are constructed in an appropriate way to minimise the risk of fire spread;*
 4. *Provide suitable and convenient means of escape, and associated evacuation strategy for all building users;*
 5. *Develop a robust strategy for evacuation which can be periodically updated and published, which all building users can have confidence in; and*

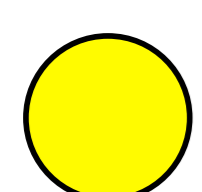
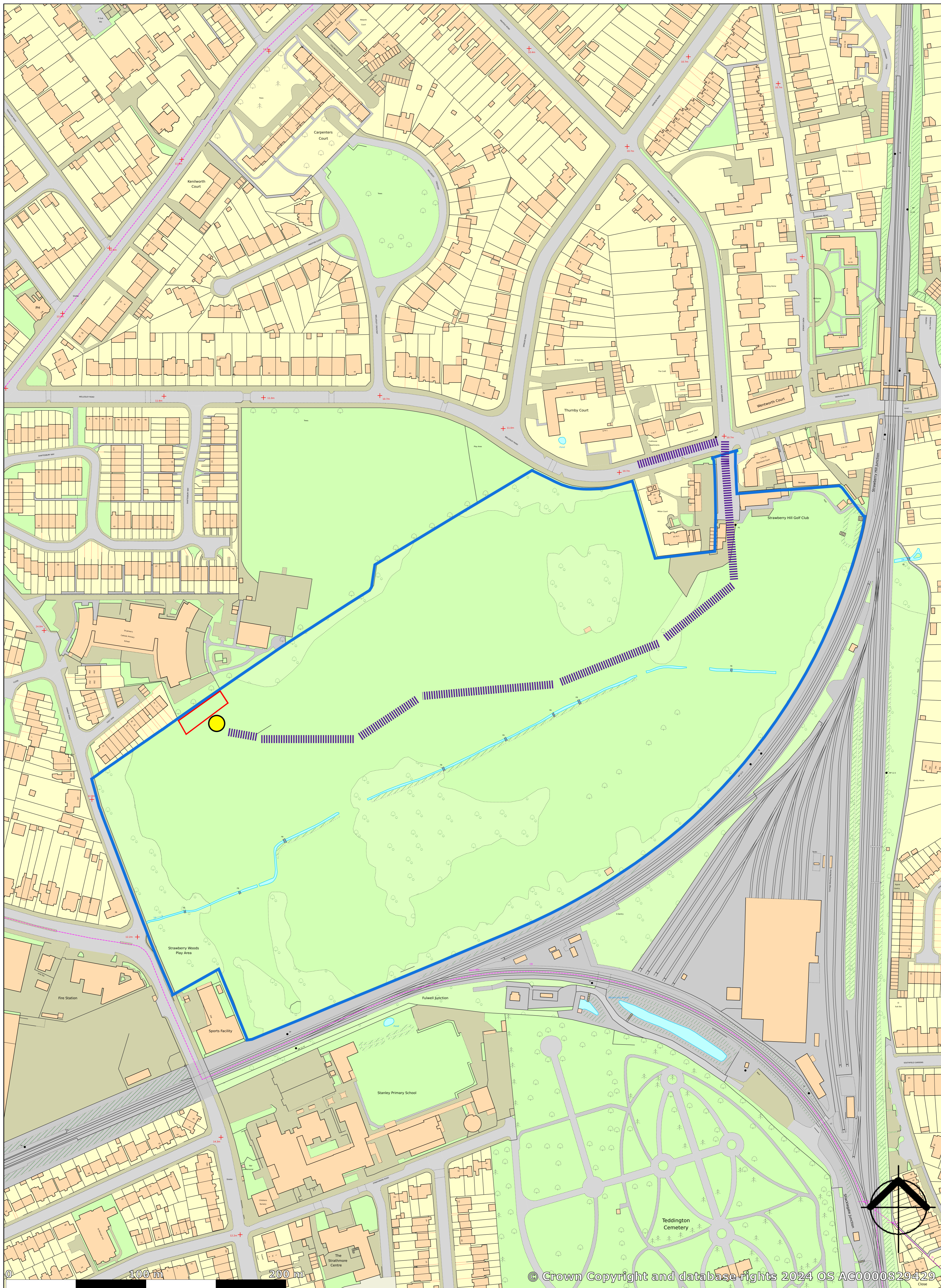
6. *Provide suitable access and equipment for firefighting which is appropriate for the size and use of the development.*

3. Comments

- 3.1. A Fire engine can drive directly to the location of the proposed development in the event of a fire (as illustrated in **Appendix 1**). The illustration also identifies a suitable location for a fire engine to be positioned on. **Appendix 2** shows the vehicular entrance to the golf course.
- 3.2. There is no need for any fire alarms or fire extinguishers as the proposed development is not within a building.
- 3.3. The proposed development will be constructed with aluminium posts. The pad dimensions will be 600mm x 600mm x 1500mm deep and shall encompass a steel sleeve set into concrete flush level into the ground. The proposed netting will be raised from the ground, and there is no source of ignition in the immediate vicinity of the proposal. The netting will be made with a 22mm mesh-polypropylene golf-stopping net.
- 3.4. The proposal does not create any new floor space, as such an associated evacuation strategy and convenient means of escape do not apply to this proposal.

APPENDIX 1

Illustration on submitted Site Location Plan showing fire engine access route to the proposed development



Suitable location for fire engine to be positioned



Fire engine access path

APPENDIX 2

Existing vehicle entrance to the golf course (Google Earth,
2024)



Secure vehicular entrance for fire engine