

Do not scale from this drawing

© Brookes Architects Limited (BAL), all rights reserved.

This drawing has been prepared for the use of BAL's client specifically for the site titled below. It may not be used, modified, reproduced or relied upon by third parties.

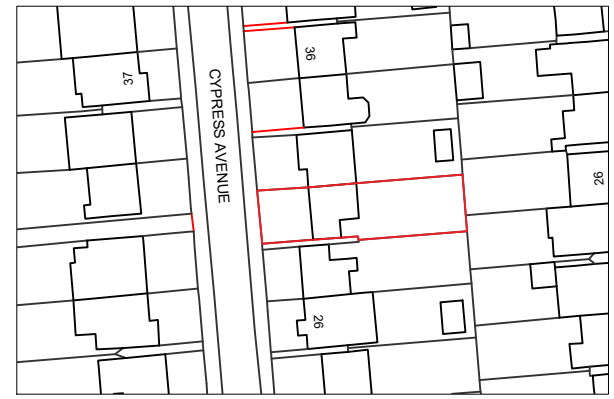
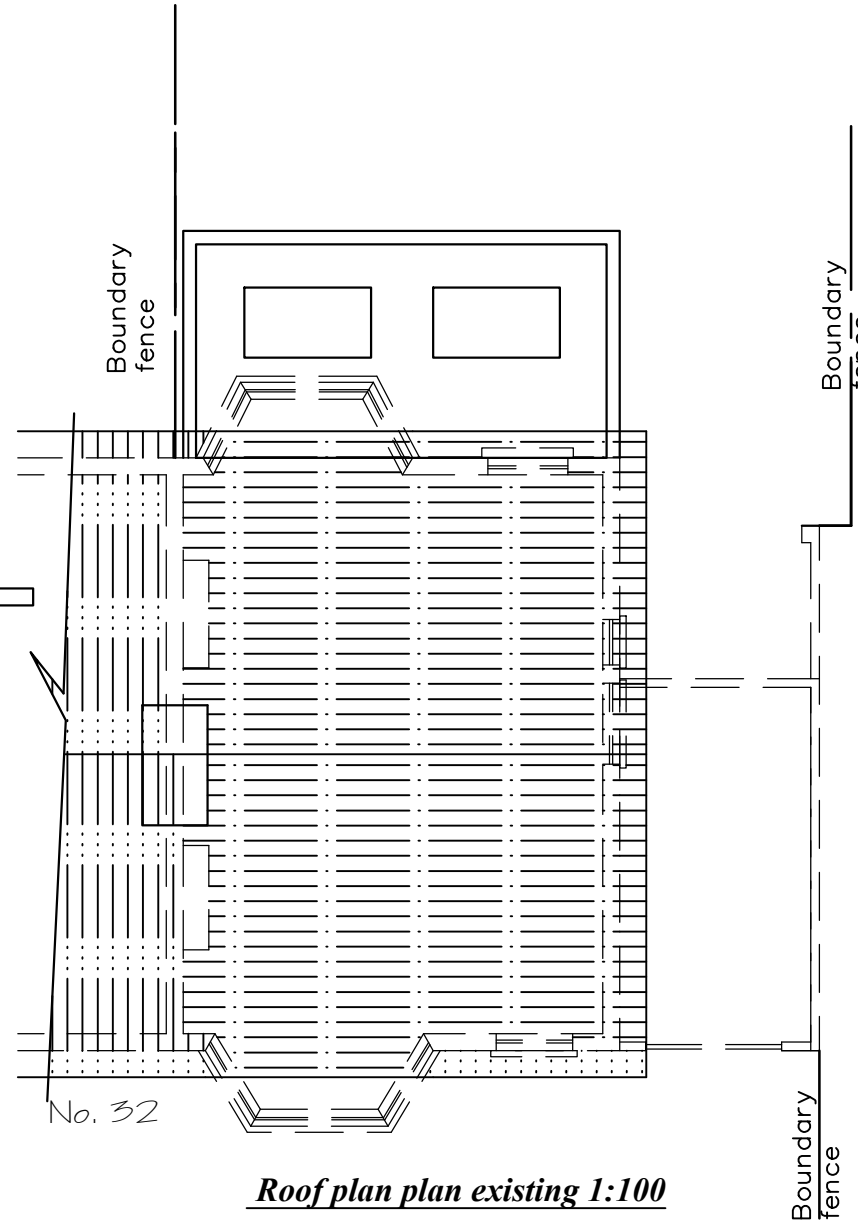
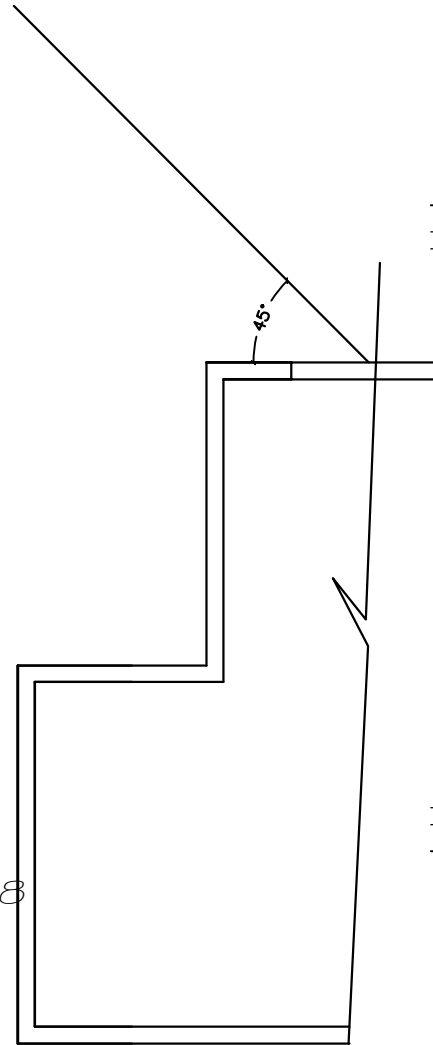
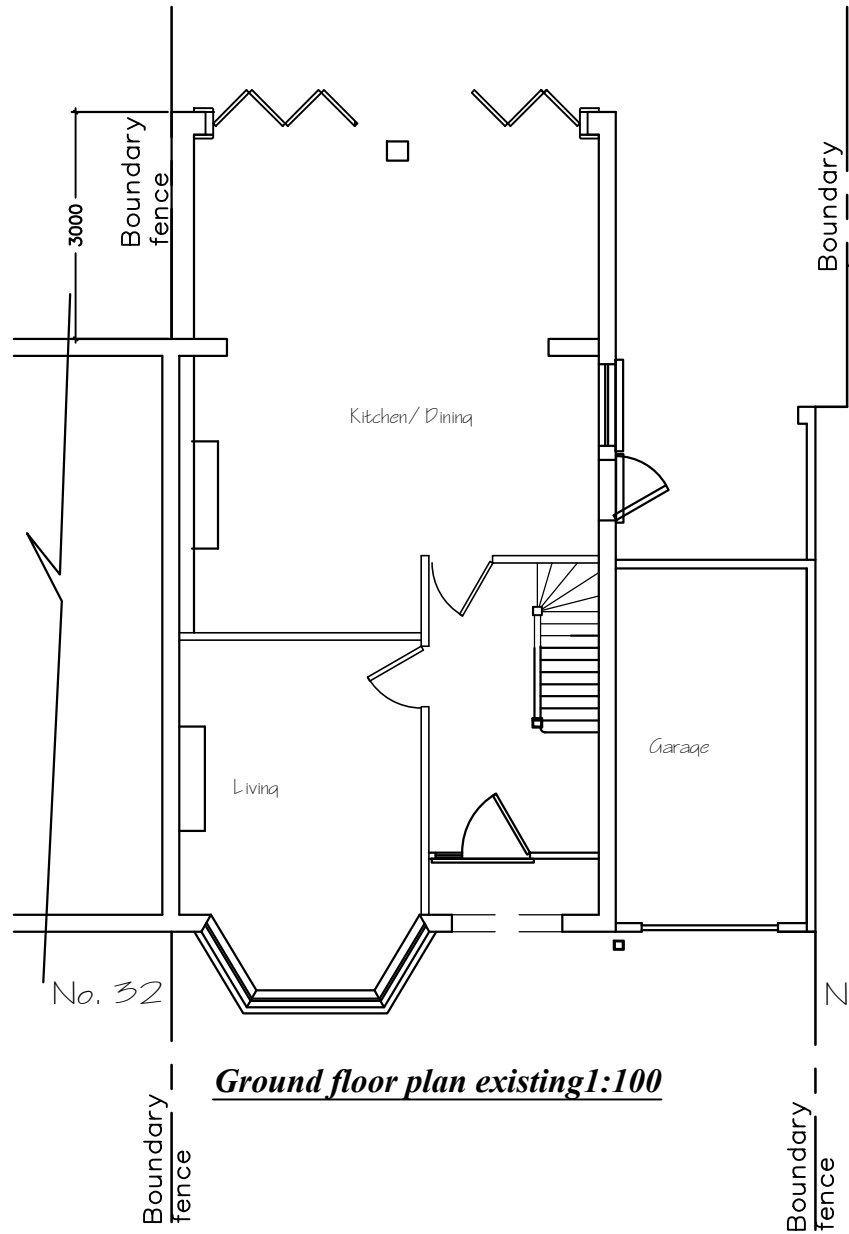
Do not scale from this drawing. All areas are approximate. All dimensions are to be verified on site prior to construction. Responsibility for the reproduction of this drawing lies with the recipient to check that all information has been replicated in full when compared with the original.

This drawing must be read in conjunction with all other relevant consultants' information.

Any discrepancies and/or ambiguities within this drawing, or between it and information given elsewhere, must be reported immediately to BAL for clarification before proceeding.

All works are to be carried out in accordance with current British Standards, Building Regulations and relevant Codes of Practice.

Refer to the Construction (Design and Management) documentation where applicable. It is assumed that all works will be carried out by a competent contractor working, where necessary, to an approved method statement.



PLANNING

Rev	Status	Description	Issued	Drawn/Checked
P2	PI	Unbull loft extension removed	20.08.24	AK/IF
P1	Pr	Preliminary Issue	08.07.24	AL/IF

Project No.
5469

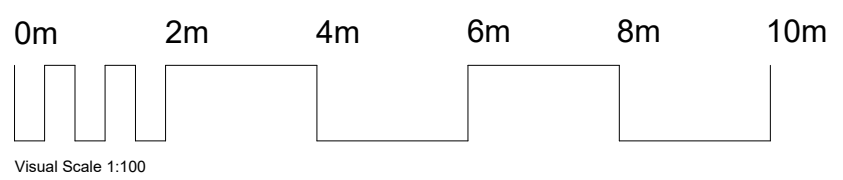
Project
30 Cypress Avenue
Whittington
TW2 7JZ

Drawing
Proposed Rear Extension
Plans
1-100

Scale	Date	Drawn	Checked
1 : 100@A3	Jul '24	AL	IF

Brookes Architects

Unit 1 - 66 Gresham Road
London E9 7JZ
T 020 8457 1223
www.brookesarchitects.co.uk



5469-BAL-XX-ZZ-DR-A-07-0301

Revision	P2
Status	PI