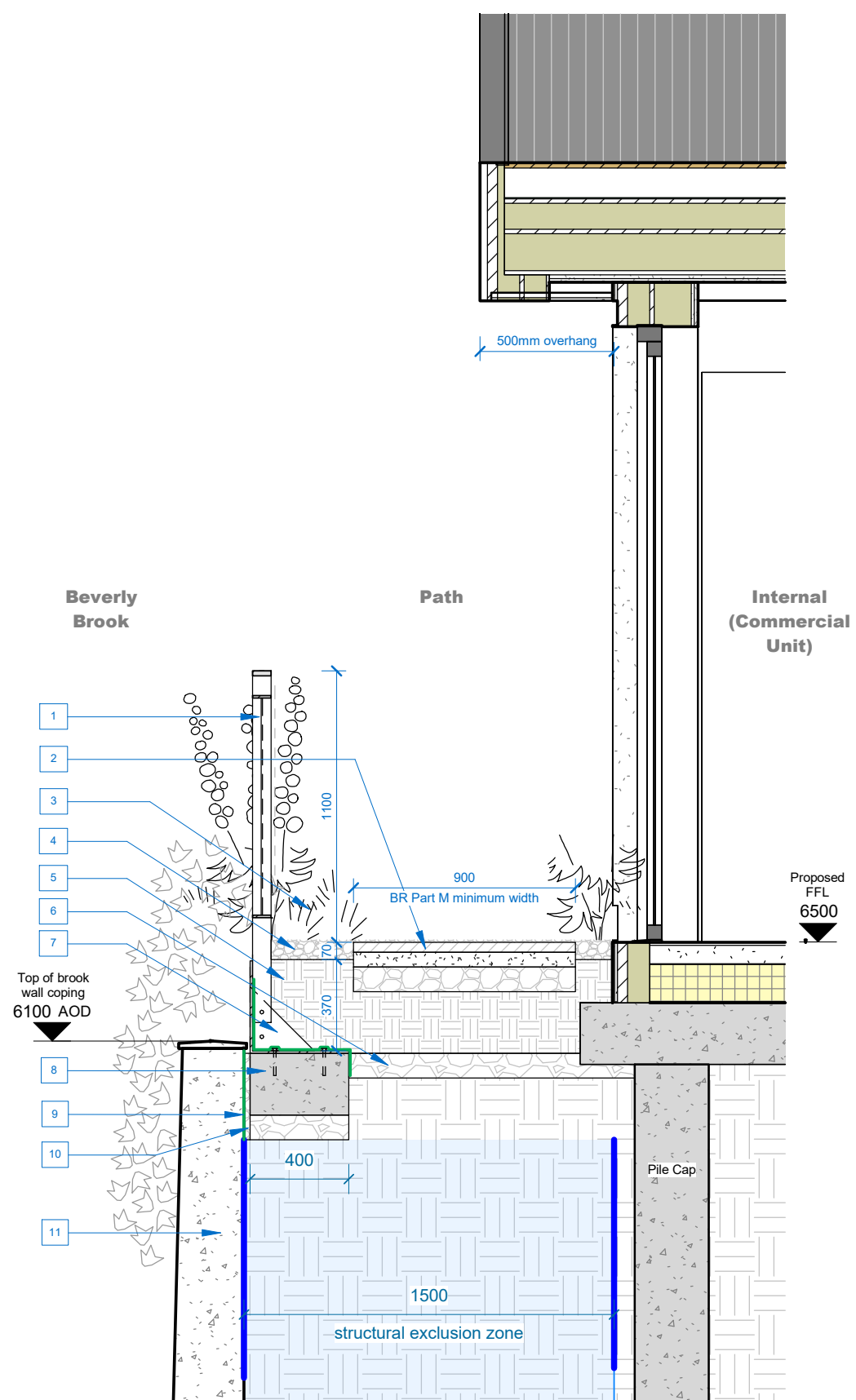
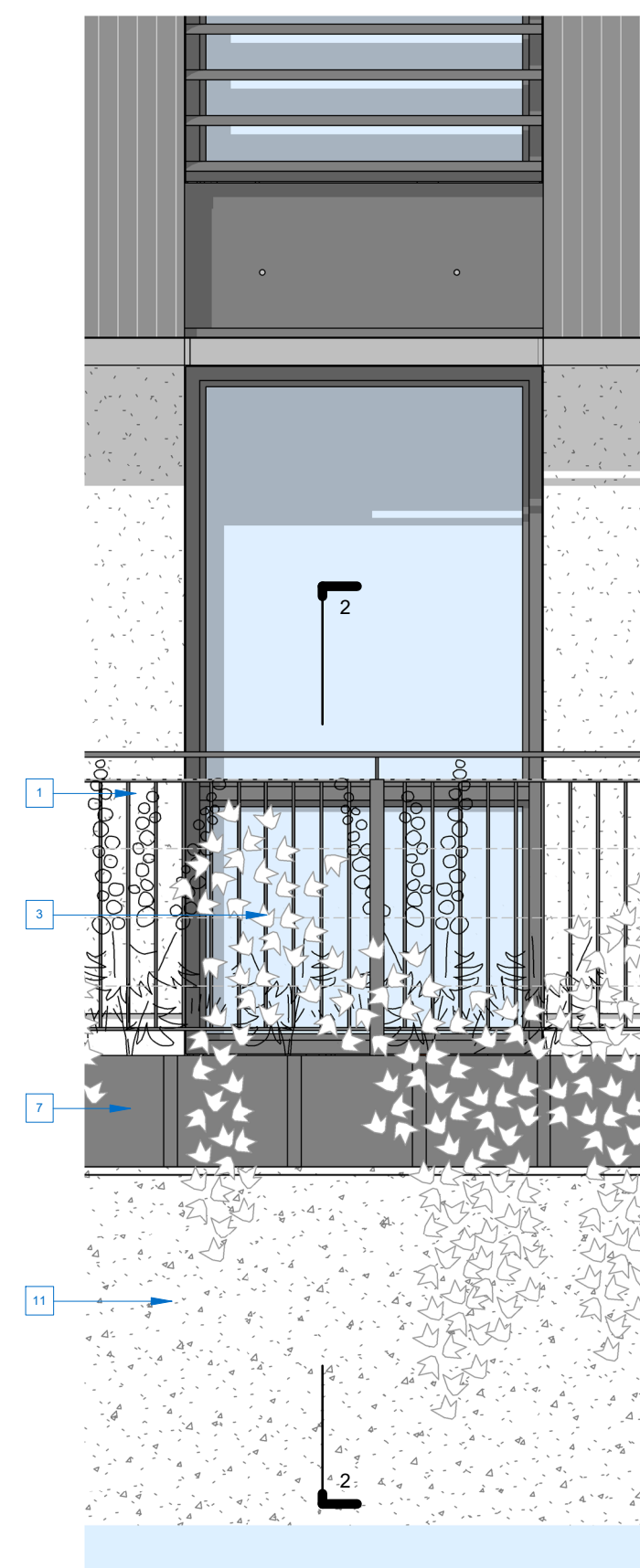


1 Part Plan - Typical River Walkway
1 : 25

- Key**
1. PPC painted vertical flat bar steel ballustrade railing and handrail fixed at 1500mm intervals, handrail with horizontal growing wires.
 2. Linear plank paving with 60mm bedding layer and 100mm sub-base, with 20-30mm spacing for soil and planting growth between.
 3. Biodiverse planting mix (naturalised and native species) including draping climbers into brook.
 4. 70mm topsoil
 5. Minimum 300mm subsoil
 6. Drainage layer
 7. PPC painted galvanized steel bracket and plate to form planter edge fixed back to new footing.
 8. 400mm(w) x 250mm(h) concrete footing to S.E size and specification, with 100mm subbase
 9. Membrane barrier
 10. Sand / pebble binding
 11. Existing brook concrete wall



2 Detail Section - River Walkway
1 : 25



3 Detail Elevation - Brook
1 : 25



Revision	Date	Description
P2	04/09/24	Planning Issue
P1	23/02/24	EA Permit Issue

© copyright Wimshurst Pelleriti, all rights reserved 2023

Do not scale-off this drawing. Wimshurst Pelleriti take no responsibility for any dimensions obtained by measuring or scaling from this drawing and no reliance may be placed on such dimensions. If no dimension is given, it is the responsibility of the recipient to ascertain the dimension specifically from the Architect or by site measure.

The sizing of all structural service elements must always be checked against the relevant engineers drawings. No reliance should be placed upon information shown on the drawing.

project
PRIESTS BRIDGE, SW14 8TA

drawing title
DETAIL BAY - LANDSCAPE RIVER PATH

drawing number
0663-WPA-01-ZZ-DR-A- 1454

scale @ A3
1 : 25

revision
P2

drawing purpose
PLANNING

first issue date
30/01/24

WIMSHURST PELLERITI
The Mews,
6 Putney Common, SW15 1HL
0208 780 2206
info@wp.uk.com
wimshurst-pelleriti.com

