



**Kisiel** Group

# Planning Condition

## Number 08

# Biodiverse Green Roof

Ref: DC/KNP/22/1497/FUL/FUL



**Project:**

**32 Haverfield Gardens,**

**Richmond,**

**TW9 3DD**

## 1.0 Introduction

This report has been prepared by Kisiel Ltd in relation to works at 32 Haverfield Gardens, Kew, TW9 3DD.

Planning permission was granted on 10<sup>th</sup> February 2023, ref DC/KNP/22/1497/FUL/FUL, and this report relates to the discharge of pre-commencement planning condition 08:

### *U0150125 NS05 Biodiverse Green/Brown Roof*

*Prior to commencement of superstructure works (excluding site investigations and demolition), details of the biodiversity (green/brown) roof(s) shall be submitted to and approved in writing by the Local Planning Authority, including details of maintenance. The biodiversity roof(s) shall be biodiversity based with extensive substrate base (min depth 80mm). The biodiversity roof shall be implemented in accordance with the details approved and planted/seeded with the agreed mix of species within the first planting season following the practical completion of the building works.*

*REASON: To enhance nature conservation interest*

## Biodiverse Green/Brown Roof

- M-Tray® green roof system consists of specially designed modular trays containing superior, engineered substrate, and fully established flowering sedum.
- Easy-to-carry trays which click together to form a seamless green roof.
- M-Trays® are designed to click together forming a single verdant surface.
- Once trays are connected, they start to blend straight away, forming a seamless layer of vegetation.
- Modular M-Trays® can be easily lifted out giving access to the deck without disruption to the rest of the roof.

## Technical Data:

Product	:	M-Tray® Modular Green Roof
Type of construction	:	Permanent
Width / breadth	:	500mm x 500mm
Height	:	100mm
Shape of walls / sides	:	Tapered / angled
Units per m2	:	4
Material	:	Recycled polypropylene
Thickness of material	:	3mm
Internal ridge height / reservoir height	:	20mm
Number of internal drainage reservoirs	:	25
Drainage holes per unit	:	8
Distance between trays at base	:	20mm
Distance between trays at 50mm from base	:	10mm
Dry weight (empty)	:	1.1Kg
Weight field capacity <sup>1</sup>	:	25kg
Connectors Per Unit	:	4
Number Of Handles on Underside	:	4
Detail Of Corners / Edges	:	Smooth / reinforced





## Care & Maintenance

A simple, low maintenance solution supplied layer by layer.

Sedum requires less maintenance than other types of green roof because it is so hardy, and drought resistant but periodic attention is recommended. A green roof is a living thing which will change significantly over the seasons. It will be at its most splendid in the Spring & Summer months and it is important that care and attention to substrate moisture levels, nutrients and weeds is given throughout the year to maintain healthy growth of the vegetation. A maintenance programme for your green roof should be made for regular intervals, especially in the Spring and Autumn including:

### Early Spring

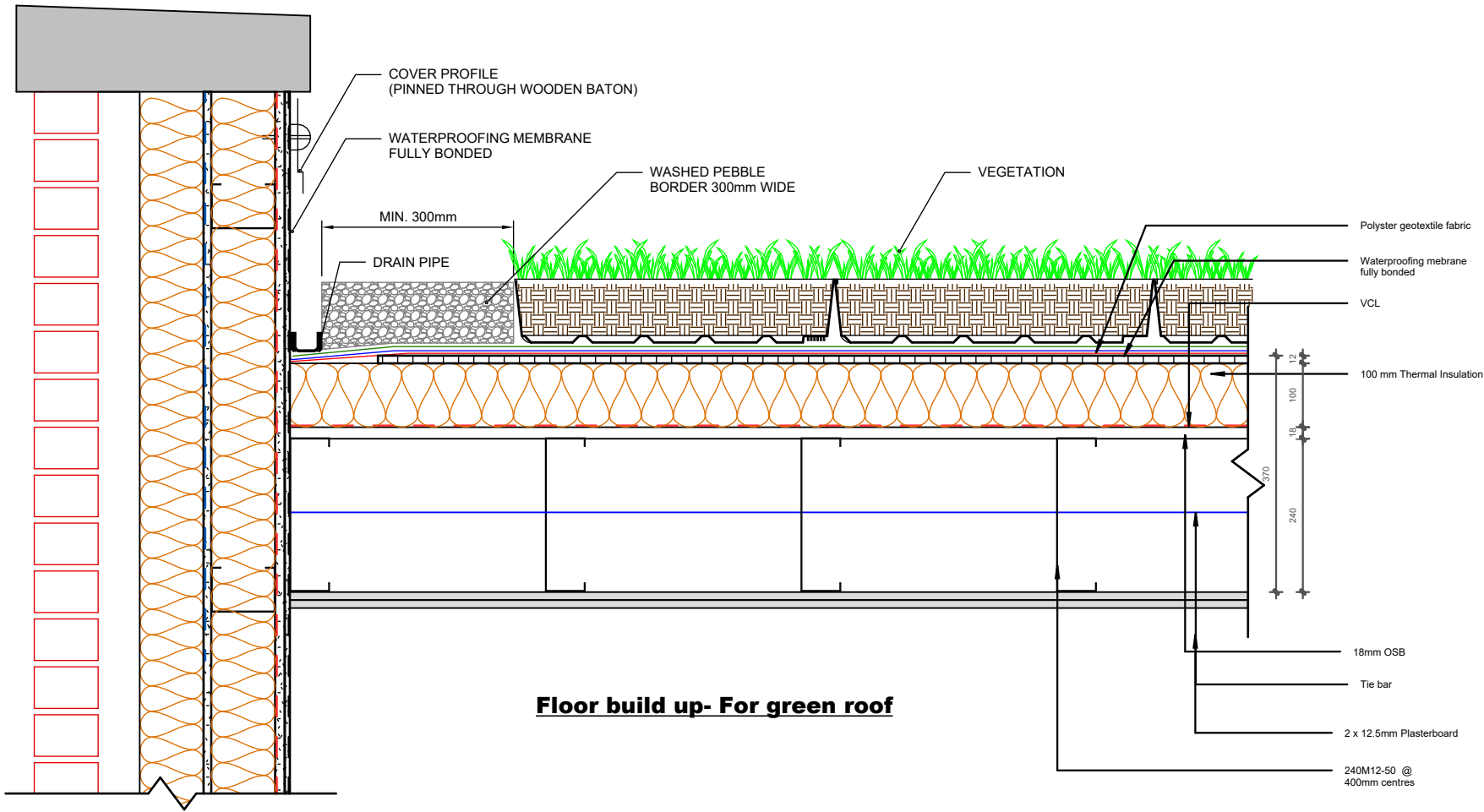
- Removing weeds, especially grass, by hand.
- Removing dead vegetation including leaves and stalks from surface of green roof.
- Clearing debris from drainage outlets.
- "Gapping up" patches of bare substrate by either separating clumps of sedum from the existing roof and planting; buying additional plug plants to insert or spreading sedum cuttings onto the surface of the substrate and watering in fully.
- Cuttings are made by snipping off the tops of the stems from sedum plants. They re-root very efficiently quickly into the substrate.
- Applying Wallbarn Vitax Q4 slow-release granular fertiliser.

### Mid-Summer

- Watering – Sedum will survive for periods without rain, but if it starts to turn red it is in distress. Although in times of drought the sedum goes into suspended animation, if in times of very high temperatures and no rainfall it is possible to irrigate the green roof, do so. An integrated irrigation system built into the green roof during installation is recommended.

### Autumn

- Wait until all sedums and wildflowers have finished flowering.
- Removing weeds, especially grass, using tools to remove all roots.
- Clearing dead vegetation using a rake. Remove dead stalks and other items which can cause a fire hazard. If any dead vegetation is holding seeds post flowering spread these seeds onto the surface of the substrate and rake in where possible.
- Clearing debris from drainage outlets.
- "Gapping up" bare patches with sedum clumps, purchased plug plants or sedum cuttings.
- Watering in fully.
- Draining irrigation systems before frost appears.
- Applying Wallbarn Vitax Q4 slow-release granular fertiliser.



**Floor build up- For green roof**

**Notes**

- Contractors must verify all dimensions on site before commencing any work on shop drawings.
- Do not scale from this drawing Kisiel Group copyright

**BIM Transmittal Disclaimer**  
 Kisiel Ltd makes no express or implied warranties with respect to the character, function, or capabilities of the data (inclusive of 3rd party data incorporated within), or the suitability of the data for any particular purpose beyond those originally intended by Kisiel Ltd. please refer to our standard terms and conditions for further details.

No	Date	Description
----	------	-------------



Kisiel Limited  
 5 Sandiford Road,  
 Sutton SM3 9RN  
 020 3695 4647  
 www.kisiel.co.uk

CLIENT  
 Kisiel Group

PROJECT  
 32 Haverfield Gardens, Kew,  
 TW9 3DD

Project number  
 3265

DRAWING TITLE  
 Floor buildup - Greenroof

Scale (@ A1)	Drawn by	Checked by	Date
1 : 10	Vishnu	LK	19/07/24

PROJECT NUMBER - ORIGINATOR - ZONE - LEVEL - TYPE - DISCIPLINE - NUMBER	REV
3265 - KIS - 1-5 - R - D - S - 506	

Notes

1. Contractors must verify all dimensions on site before commencing any work on shop drawings.
2. Do not scale from this drawing Kisiel Group copyright

**BIM Transmittal Disclaimer**  
Kisiel Ltd makes no express or implied warranties with respect to the character, function, or capabilities of the data (inclusive of 3rd party data incorporated within), or the suitability of the data for any particular purpose beyond those originally intended by Kisiel Ltd. please refer to our standard terms and conditions for further details.



Rev	Description	Date

CODE	SUITABILITY DESCRIPTION
STATUS	PURPOSE OF ISSUE



Kisiel Limited  
5 Sandford Road, Sutton SM3 9RN  
020 3695 4647  
www.kisiel.co.uk

CLIENT  
**Kisiel Group**

PROJECT  
**32 Haverfield Gardens, Kew,  
TW9 3DD**  
Project number  
**3265**

DRAWING TITLE  
**Section**

Scale (@ A1)	Drawn by	Checked by	Date
1 : 100	Vishnu	LK	22/08/24

DRAWING NUMBER			REV
3265 - 0027A			