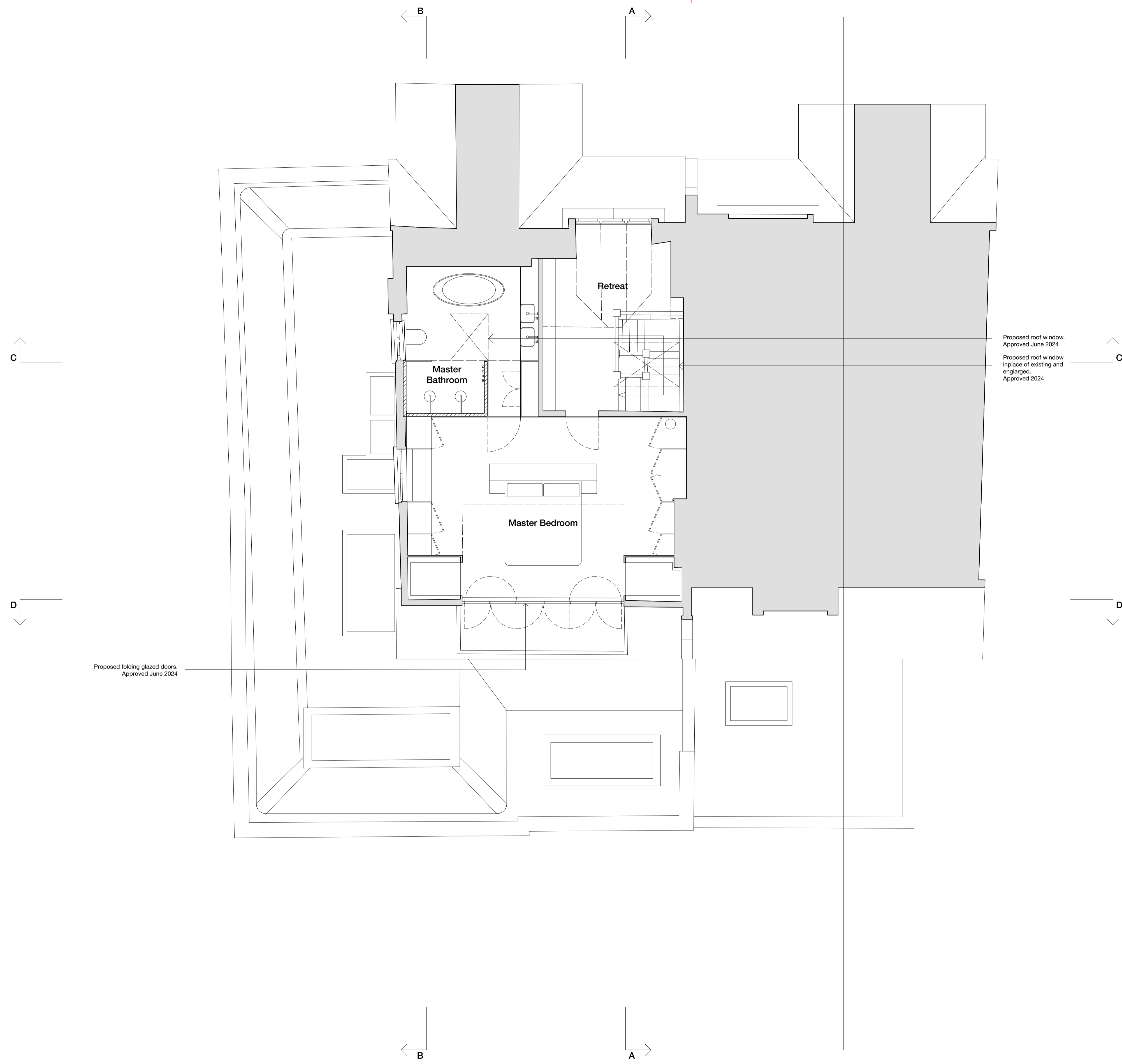
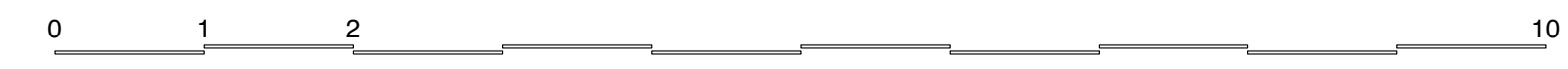


69 Lonsdale Road 67 Lonsdale Road

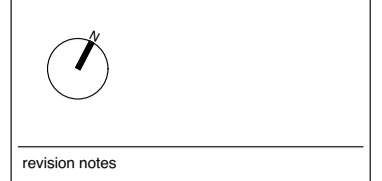


Second floor plan

Plans AS EXISTING AS APPROVED JUNE 2024: 24/1043/HOT



© 2024 Syte Architects Limited
 Drawing is copyright
 and signed dimensions - do not scale dimensions from drawing
 If you are using this drawing for anything other than the purposes for which it was prepared you must obtain the permission of the architect
 Drawing to be used in conjunction with architect's drawings and specifications



revision notes

syte
 architects
 100 Golden Square London W1P 8AA T: 020 7759 8111 www.sytearchitects.com

client

 Anna-Lisa and Samir
 project
 69 Lonsdale Road
 London
 SW13 9JR

drawing title			
Plans as existing			
date	drawn by	checked by	revision
Sep' 24	DR		
scale	checked by	drawing	
1:50@A1			337.102A