

# Tree Protection Plan

## Tree Protection Barriers:

- Construction Exclusion Zone
- Stem protected to a height of 2.5m with thick cloth & wire
- Tree Protection Hoarding 1.2 x 1.2 x 2.4m high 25mm plywood

## Construction Exclusion Zone

Within this area the following restrictions shall apply:

- No excavation or land regrading whatsoever.
- No storage of materials, rubble, soil or spoil.
- No fires within the exclusion zone or within top of any tree canopy.
- No site cabins or other temporary structures.
- No discharge of polluted water, cement or chemicals of any kind.
- No use of any machinery, or passage or parking of vehicles.
- No tree works without council consent.

**Stem Protection - Timber Boxing**

Where indicated by a triangle square on the Tree Protection Plan, it shall be necessary to install timber boxing having a cross-section as shown. The boxing being specified is indicated in the diagram opposite. The actual size of the boxing being shall be determined by the extent of the root flare or base of each tree which a study specialist such as a tree surgeon or arborist, should be able to determine. No fixings shall be attached to any part of the tree. Instead, it shall be free standing or attached to the ground or other structures (e.g. walls or fences). It shall be made free enough to withstand accidental knocks from any plant machinery that may be operated in its vicinity.

**Stem Protection - Cloth and Chestnut Pallet Wrap**

Where indicated by a triangle square on the Tree Protection Plan, it is proposed to protect a tree stem using sturdy cloth and chestnut pallet wrap double wrapped around the stem and. Other tree protection barriers, such as those specified above, are not considered appropriate due to the proximity of the tree stem to proposed activity.

The tree stem and any low limbs shall be protected from ground level to a height of 2.5m by wrapping a sturdy cloth and chestnut pallet wrap double wrapped around the stem and. The wrap shall be secured using string, wire or plastic cable ties. They shall not be secured by driving nails or bolts into the tree stem or bark.

**Ground Protection Measures**

Where indicated by a triangle square on the Tree Protection Plan, it is proposed to protect a tree stem using sturdy cloth and chestnut pallet wrap double wrapped around the stem and. Other tree protection barriers, such as those specified above, are not considered appropriate due to the proximity of the tree stem to proposed activity.

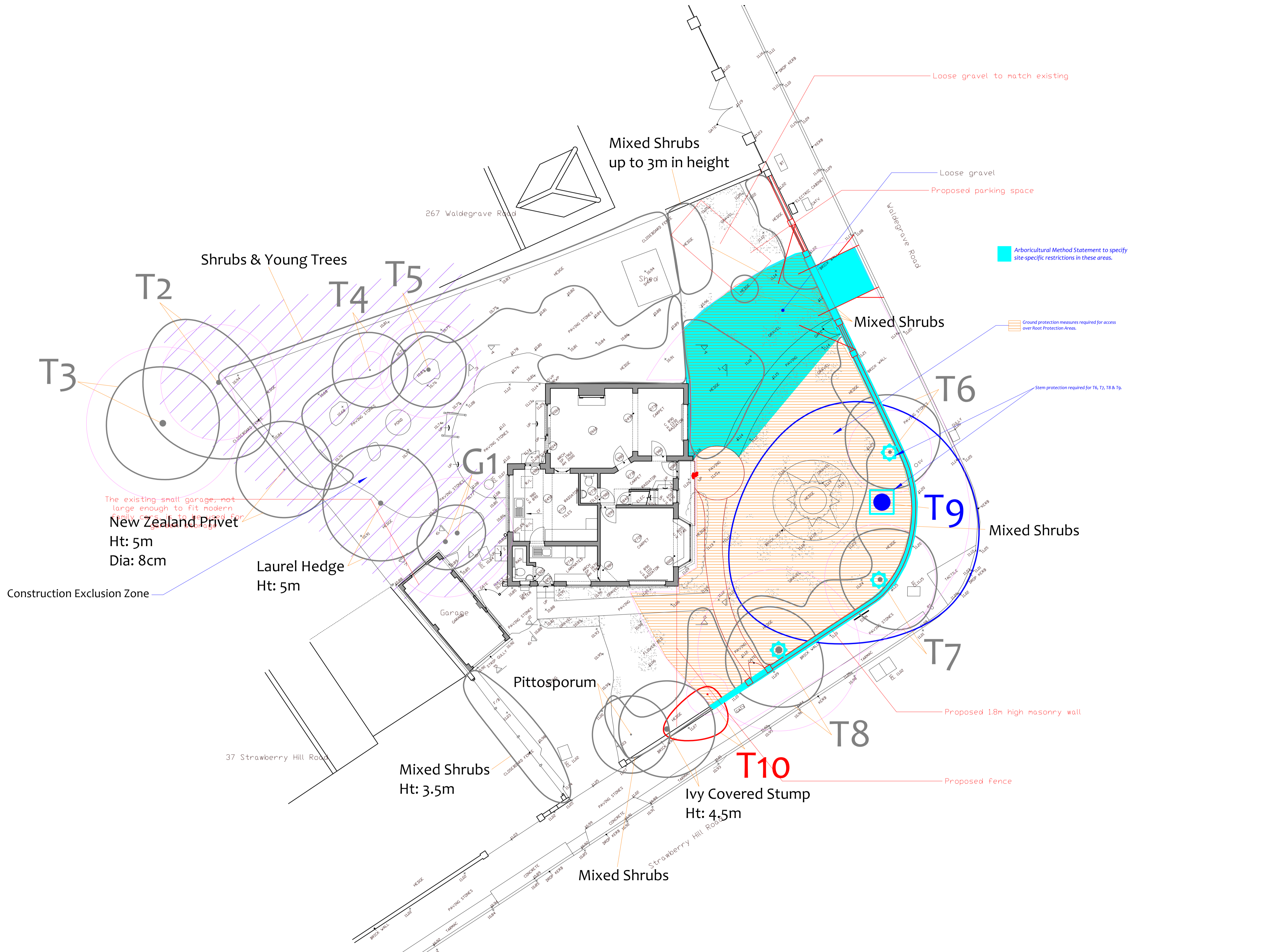
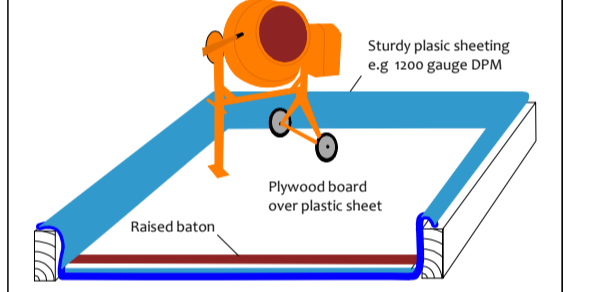
Any existing hard surfacing may be retained where engineers consider it adequate to spread the load of construction traffic. Otherwise, it will be removed or replaced with adequate ground protection measures.

Where specified otherwise, ground protection will consist of 100mm OSB boards, laid at double thickness and covered together to prevent slippage. The ground will be made even by raking, and by filling in holes or voids, wherever necessary to ensure a uniform surface. The ground protection will be secured to the ground by using 100mm x 100mm x 100mm timber posts, driven into the ground and secured to the OSB boards with additional coatings to make the framework secure.

Where engineers consider OSB boards to be inadequate (e.g. for large plant machinery where the tracks may chew up the surface) sturdy ground protection measures will be installed such as road plates, or systems of 2-3mm rigid steel installed in 30' x 30' cellular confinement system (e.g. Cellwrap).

The planing not required, specifications will be agreed between engineers and the project client. The ground protection measures will be installed and approved before commencement of demolition and construction activity and before the arrival of plant machinery or materials. They must remain in place until all heavy construction activity is complete or until they are due to be replaced with a new hard surface.

## Dedicated Mixing and Cleaning Area



Drawing No:	CCL 11902 / TPP Rev 3
Title:	Tree Protection Plan (Existing Layout with Proposals Overlaid)
Site:	265 Waldegrave Road TW1 4SU
Scale:	1:1000
Paper Size:	A1



Tree Retention Categories	
Stems & canopies shown	Notes
	Category A tree
	Category B tree
	Category C tree
	Category U tree

Trees of high quality with an estimated life expectancy of 40+ years. Usually large trees with significant presence or smaller trees with excellent form. Retention of these trees is highly desirable.

Trees of moderate quality with a life expectancy of 20+ years. Usually maturing trees, or younger trees with good form. Retention of these trees is desirable though less than Category A trees.

Unremarkable trees of low quality and merit. Individual specimens are not considered to be a material planning consideration.

Trees unsuitable for retention due to their very poor condition.

# Tree Protection Plan

	B5 S37 Root Protection Area (radius = 1xstem diameter)
	Root Protection Area needing amendment due to site conditions, e.g. presence of existing road or building.
	Root Protection Area having been amended to account for site conditions
T1 = Tree No 1	G2 = Group No 2 H3 = Hedge No 3

**MN = Measured North:**  
Canopy spreads are sometimes measured to an approximate N defined by site features. Often more accurate, especially where rows of trees are not aligned N/S or E/W.