

New Zealand Privet
Ht: 5m
Dia: 8cm

Laurel Hedge
Ht: 5m

Mixed Shrubs
Ht: 3.5m

T10
Ivy Covered Stump
Ht: 4.5m

Tree Constraints Plan

Status: Final

Drawing No:	CCL 11902 / TCP Rev: 1
Title:	Tree Constraints Plan (Existing Layout)
Site:	265 Waldegrave Road TW1 4SU
Scale:	1:100
Paper Size:	A1



Tree Retention Categories		Stems & canopies shown
	Category A tree	Trees of high quality with an estimated life expectancy of 40+ years. Usually large trees with significant presence or smaller trees with excellent form. Retention of these trees is highly desirable.
	Category B tree	Trees of moderate quality with a life expectancy of 20+ years. Usually maturing trees or younger trees with good form. Retention of these trees is desirable though less than Category A trees.
	Category C tree	Unremarkable trees of low quality and merit. Individual specimens are not considered to be a material planning consideration.
	Category U tree	Trees unsuitable for retention due to their very poor condition.

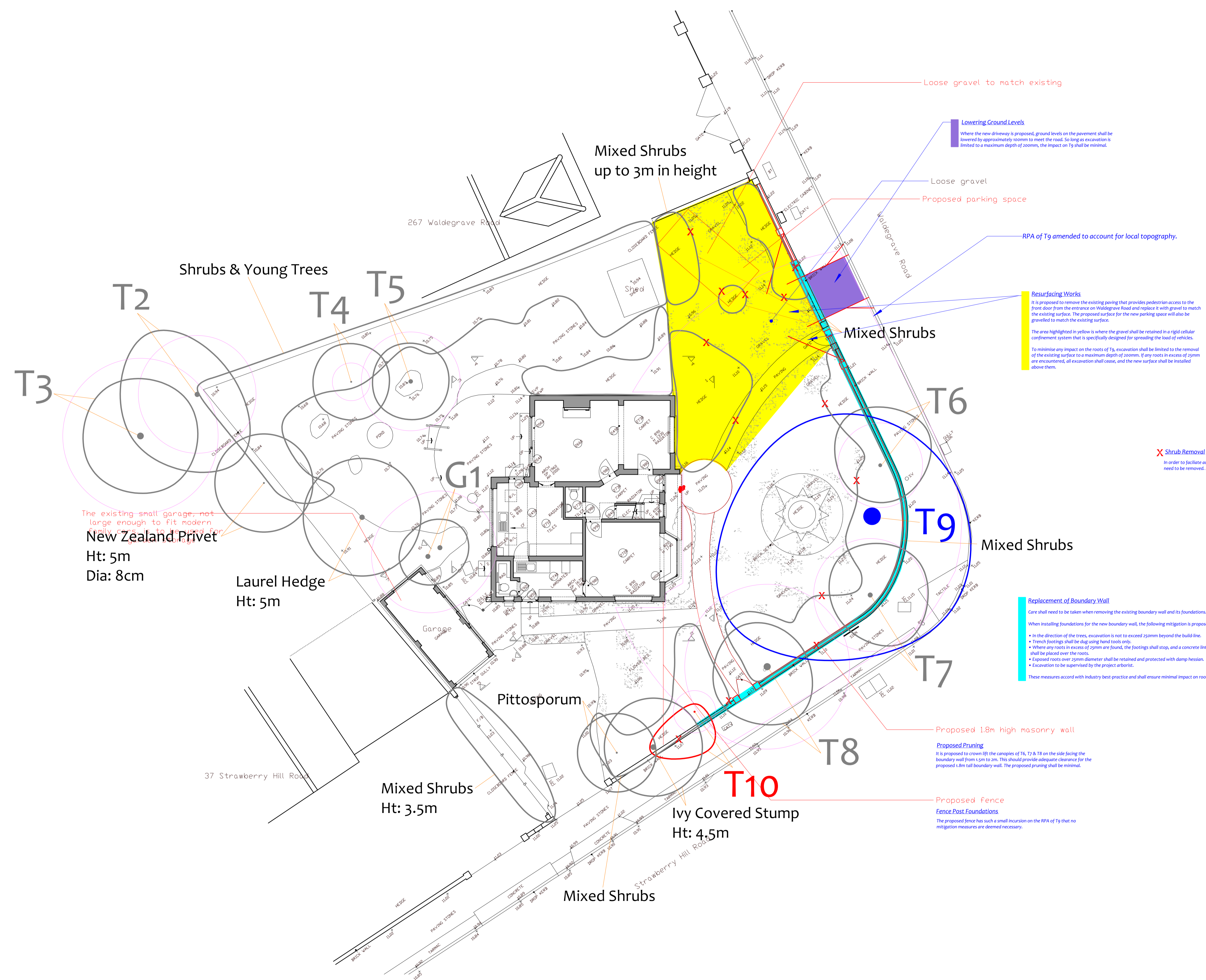
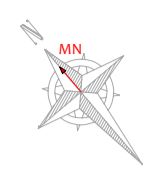
	B5 S537 Root Protection Area (radius = 1x stem diameter)
	Root Protection Area needing amendment due to site conditions, e.g. presence of existing road or building.
	Root Protection Area having been amended to account for site conditions.

Photo 1

MN = Measured North:
Canopy spreads are sometimes measured to an approximate N defined by site features. Often more accurate, especially where rows of trees are not aligned N-S or E-W.

Tree Ref.	Species	Height (m)	Root Protection Area		
			Radius (m)	Square (m)	
G1	Lawson Cypress	7.5	2.9	26	5.1
T2	Purple Plum	8	3.0	28	5.3
T3	Lawson Cypress	10	4.0	49	7.0
T4	Eucalyptus	7	1.0	3	1.7
T5	Chusan Palm	8.5	2.5	20	4.5
T6	Purple Plum	4.5	2.2	15	3.8
T7	Purple Plum	4.5	2.9	26	5.1
T8	Purple Plum	4.5	4.2	55	7.4
T9	Oak	16	10.6	350	18.7
T10	Golden Rain Tree	2	1.1	4	1.9

T1 = Tree No 1 G2 = Group No 2 H3 = Hedge No 3



The existing small garage, not large enough to fit modern New Zealand Privet
 Ht: 5m
 Dia: 8cm

Laurel Hedge
 Ht: 5m

Mixed Shrubs
 Ht: 3.5m

Pittosporum

Ivy Covered Stump
 Ht: 4.5m

Mixed Shrubs
 up to 3m in height

Mixed Shrubs

Mixed Shrubs

Proposed 1.8m high masonry wall

Proposed Pruning
 It is proposed to crown lift the canopies of T6, T7 & T8 on the side facing the boundary wall from 1.5m to 2m. This should provide adequate clearance for the proposed 1.8m tall boundary wall. The proposed pruning shall be minimal.

Proposed Fence
 Fence Post Foundations
 The proposed fence has such a small incursion on the RPA of T9 that no mitigation measures are deemed necessary.

Lowering Ground Levels
 Where the new driveway is proposed, ground levels on the pavement shall be lowered by approximately 100mm to meet the road. So long as excavation is limited to a maximum depth of 200mm, the impact on T9 shall be minimal.

Loose gravel
 Proposed parking space

RPA of T9 amended to account for local topography.

Resurfacing Works
 It is proposed to remove the existing paving that provides pedestrian access to the front door from the entrance on Waldegrave Road and replace it with gravel to match the existing surface. The proposed surface for the new parking space will also be gravelled to match the existing surface.
 The area highlighted in yellow is where the gravel shall be retained in a rigid cellular confinement system that is specifically designed for spreading the load of vehicles.
 To minimise any impact on the roots of T9, excavation shall be limited to the removal of the existing surface to a maximum depth of 200mm. If any roots in excess of 25mm are encountered, all excavation shall cease, and the new surface shall be installed above them.

Shrub Removal
 In order to facilitate access, the shrubs closest to the boundary wall will need to be removed. All other trees can be retained and worked around.

Replacement of Boundary Wall
 Care shall need to be taken when removing the existing boundary wall and its foundations. When installing foundations for the new boundary wall, the following mitigation is proposed:
 • In the direction of the trees, excavation is not to exceed 250mm beyond the build line.
 • Trench footings shall be dug using hand tools only.
 • Where any roots in excess of 25mm are found, the footings shall stop, and a concrete lintel shall be placed over the roots.
 • Exposed roots over 25mm diameter shall be retained and protected with damp hessian.
 • Excavation to be supervised by the project arborist.
 These measures accord with industry best practice and shall ensure minimal impact on roots.

Drawing No:	CCL 11902 / IAP Rev: 3
Title:	Impact Assessment Plan
Site:	265 Waldegrave Road TW1 4SU
Scale:	1:1000
Paper Size:	A1



Tree Retention Categories	
Stems & canopies shown	
	Category A tree
	Category B tree
	Category C tree
	Category U tree

Trees of high quality with an estimated life expectancy of 40+ years. Usually large trees with significant presence or smaller trees with excellent form. Retention of these trees is highly desirable.

Trees of moderate quality with a life expectancy of 20+ years. Usually maturing trees or younger trees with good form. Retention of these trees is desirable though less than Category A trees.

Unremarkable trees of low quality and merit. Individual specimens are not considered to be a material planning consideration.

Trees unsuitable for retention due to their very poor condition.

Impact Assessment Plan

Status: Final - for submission

	BS s837 Root Protection Area (radius = 1xstem diameter)
	Root Protection Area needing amendment due to site conditions, e.g. presence of existing road or building.
	Root Protection Area having been amended to account for site conditions
T1 = Tree No 1	G2 = Group No 2 H3 = Hedge No 3

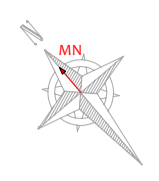
Tree to be removed to facilitate the proposal

Tree to be removed due to its low quality

Proposed pruning

MN = Measured North:
 Canopy spreads are sometimes measured to an approximate N defined by site features. Often more accurate, especially where rows of trees are not aligned N-S or E-W.

Tree Ref.	Species	Height (m)	Radius (m)	Square (m)
G1	Lawson Cypress	7.5	2.9	26
T2	Purple Plum	8	3.0	28
T3	Lawson Cypress	10	4.0	49
T4	Eucalyptus	7	1.0	3
T5	Chusan Palm	8.5	2.5	20
T6	Purple Plum	4.5	2.2	15
T7	Purple Plum	4.5	2.9	26
T8	Purple Plum	4.5	4.2	55
T9	Oak	16	10.6	350
T10	Golden Rain Tree	2	1.1	4



Tree Protection Plan

Tree Protection Barriers:

- Construction Exclusion Zone
- Stem protected to a height of 2.5m with thick cloth & wire
- Tree Protection Hoarding 1.2 x 1.2 x 2.4m high 25mm plywood

Construction Exclusion Zone

Within this area the following restrictions shall apply:

- No excavation or land regrading whatsoever.
- No storage of materials, rubble, soil or spoil.
- No fires within the exclusion zone or within top of any tree canopy.
- No site cabins or other temporary structures.
- No discharge of polluted water, cement or chemicals of any kind.
- No use of any machinery, or passage or parking of vehicles.
- No tree works without council consent.

Stem Protection - Timber Boxing

Where indicated by a triangle symbol on the Tree Protection Plan, it shall be necessary to install timber boxing having a cross-section as shown. The boxing being specified is indicated in the diagram opposite. The actual size of the boxing being specified shall be determined by the extent of the root flare or base of each tree which a study specialist such as a tree surgeon or arborist, should be able to determine. No fixings shall be attached to any part of the tree. Instead, it shall be free standing or attached to the ground or other structures (e.g. walls or fences). It shall be made free enough to withstand accidental knocks from any plant machinery that may be operated in its vicinity.

Stem Protection - Cloth and Chestnut Pallet Wrap

Where indicated by a triangle symbol on the Tree Protection Plan, it is proposed to protect a tree stem using sturdy cloth and chestnut pallet wrap double wrapped around the stem and. Other tree protection barriers, such as those specified above, are not considered appropriate due to the proximity of the tree stem to proposed activity.

The tree stem and any low limbs shall be protected from ground level to a height of 2.5m by wrapping a sturdy cloth and chestnut pallet wrap double wrapped around the stem and. The wrapping shall be secured using string, wire or plastic cable ties. They shall not be secured by driving nails or bolts into the tree stem or bark.

Ground Protection Measures

Where indicated by a triangle symbol on the Tree Protection Plan, it is proposed to protect a tree stem using sturdy cloth and chestnut pallet wrap double wrapped around the stem and. Other tree protection barriers, such as those specified above, are not considered appropriate due to the proximity of the tree stem to proposed activity.

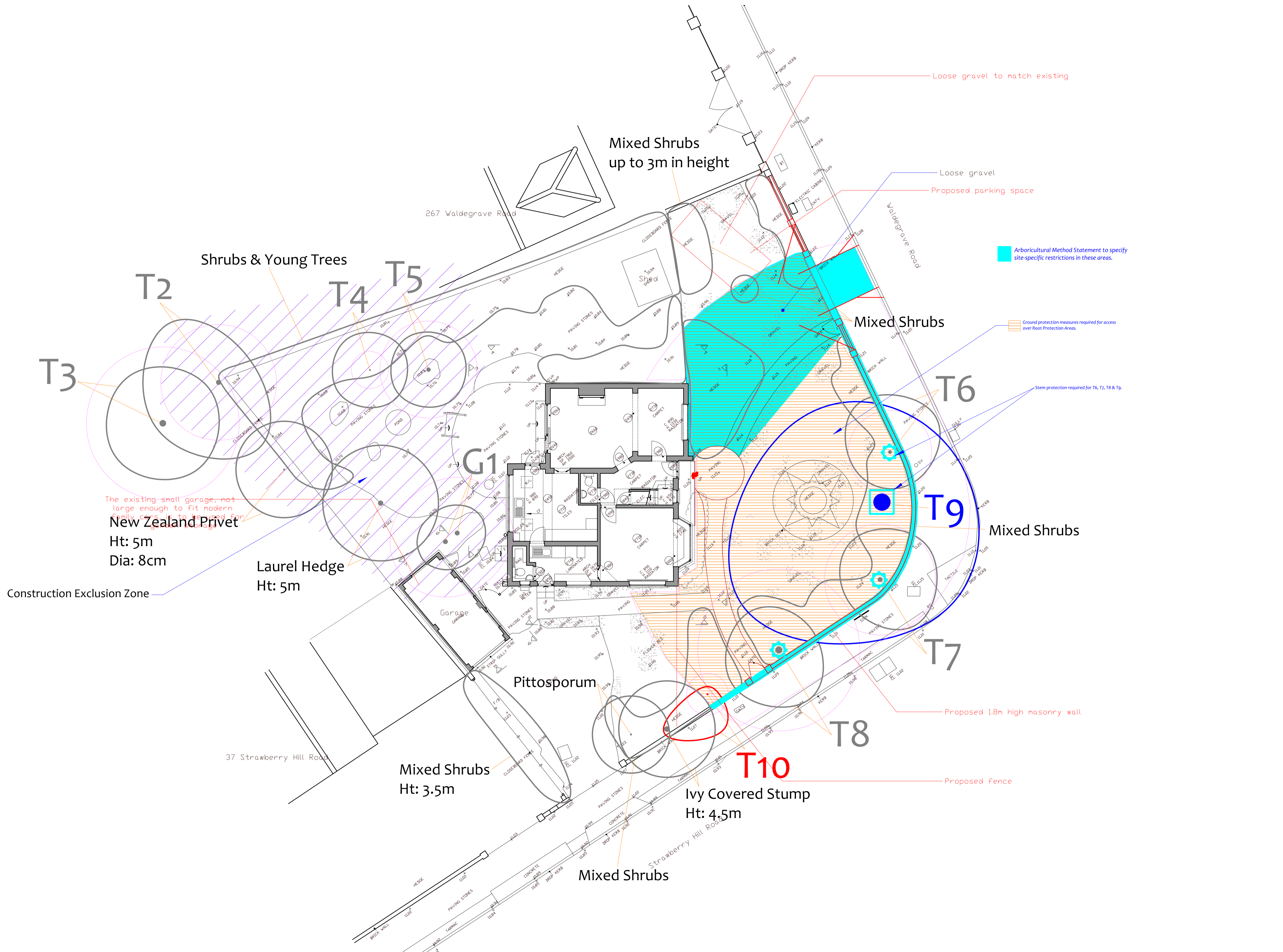
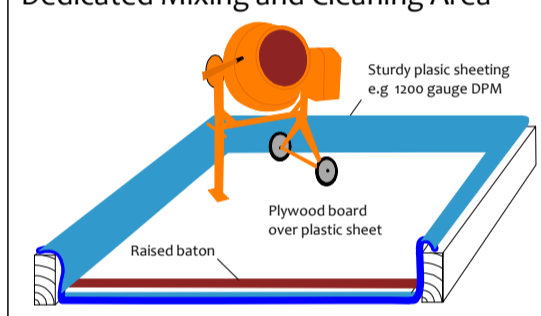
Any existing hard surfacing may be retained where engineers consider it adequate to spread the load of construction traffic. Otherwise, it will be removed or replaced with adequate ground protection measures.

Where specified otherwise, ground protection will consist of 100mm OSB boards, laid at double thickness and covered together to prevent slippage. The ground will be made even by raking, and by filling in holes or voids, wherever necessary to ensure a uniform surface. Protection mats shall be laid on the ground and secured to the ground with 100mm diameter steel rods (or other suitable material) with additional coatings to make the framework secure.

Where engineers consider OSB boards to be inadequate (e.g. for large plant machinery where the tracks may chew up the surface) ground protection measures will be installed such as road plates, or systems of 2-3mm rigid steel installed in 30' x 30' cellular confinement system (e.g. Cellwrap).

The plans set out required specifications will be agreed between engineers and the project client. The ground protection measures will be installed and approved before commencement of demolition and construction activity and before the arrival of plant machinery or materials. They shall remain in place until all heavy construction activity is complete or until they are due to be replaced with a new hard surface.

Dedicated Mixing and Cleaning Area



Drawing No:	CCL 11902 / TPP Rev 3
Title:	Tree Protection Plan (Existing Layout with Proposals Overlaid)
Site:	265 Waldegrave Road TW1 4SU
Scale:	1:1000
Paper Size:	A1



Tree Retention Categories	
Stems & canopies shown	Category
	Category A tree
	Category B tree
	Category C tree
	Category U tree

Trees of high quality with an estimated life expectancy of 40+ years. Usually large trees with significant presence or smaller trees with excellent form. Retention of these trees is highly desirable.

Trees of moderate quality with a life expectancy of 20+ years. Usually maturing trees or younger trees with good form. Retention of these trees is desirable though less than Category A trees.

Unremarkable trees of low quality and merit. Individual specimens are not considered to be a material planning consideration.

Trees unsuitable for retention due to their very poor condition.

Tree Protection Plan

	B5 S37 Root Protection Area (radius = 1xstem diameter)
	Root Protection Area needing amendment due to site conditions, e.g. presence of existing road or building.
	Root Protection Area having been amended to account for site conditions
T1 = Tree No 1	G2 = Group No 2 H3 = Hedge No 3

MN = Measured North:
Canopy spreads are sometimes measured to an approximate N defined by site features. Often more accurate, especially where rows of trees are not aligned N/S or E/W.