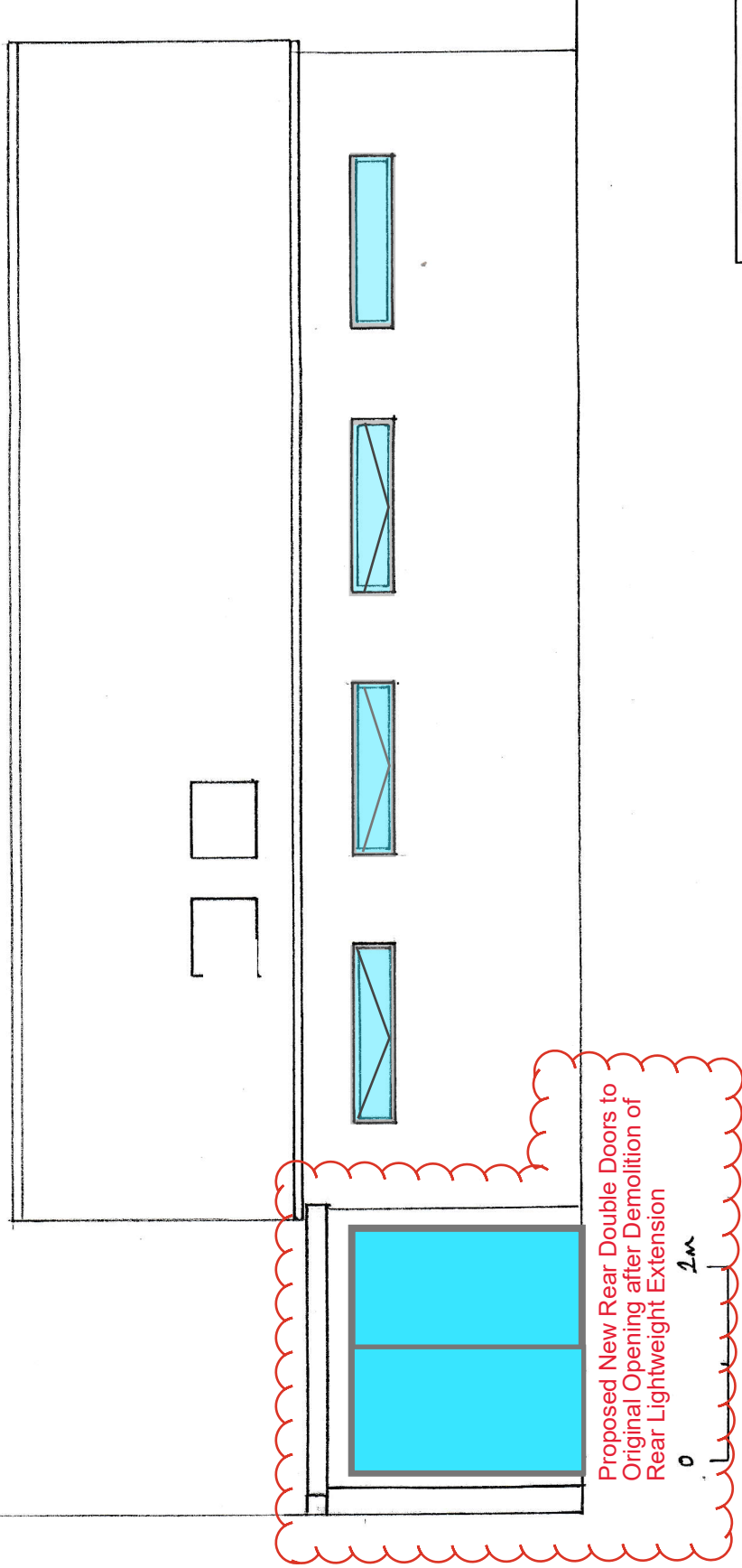


COPPERSTONE Ltd

**1.12
PROPOSED NEW REAR DOUBLE
DOORS TO ORIGINAL OPENING**

28th August 2024



Proposed New Rear Double Doors to
Original Opening after Demolition of
Rear Lightweight Extension

2m

Burleigh Estates

Milton House, 33A Milton Road, Hampton, TW12 2LL

Drawing No. 2022-07-004

Existing Rear Elevation

Scale 1:50 @ A3