

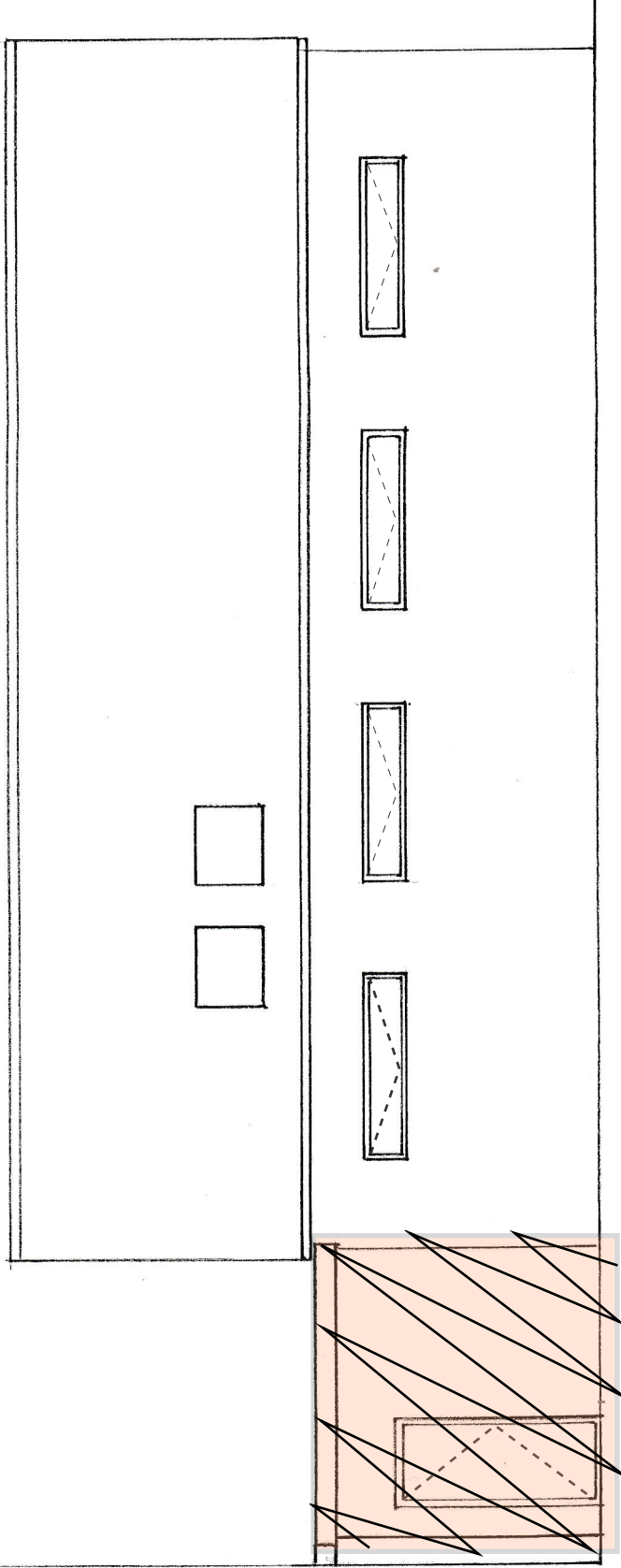
# COPPERSTONE Ltd

PROPOSED 1.11 RevB

Demolition of Rear Extension

Approved Planning Drawing 2022-07-006 revC

28th August 2024



0 2m

**Burleigh Estates**

Milton House, 33A Milton Road, Hampton, TW12 2LL

Drawing No. 2022-07-004

**PROPOSED REAR ELEVATION**