

Richmond Upon Thames School – Cycle Parking Management Plan for the Sports Building

This document is an addendum to the RTS and Clarendon School Car Park and Cycle Management Plan document created in March 2019 and relates to the sports building to the west of the main school building.

The sports building houses a 4 court sports hall, activity studio and associated changing facilities as well as a single office to accommodate 2 people. The total number of staff and students is not increased with the provision of this building. There are 10 additional cycle parking hoops (20 cycle parking spaces) being provided by this development which are for community use and visitors to the sports building. The staff and student cycle stores remain at the eastern side of the site near the entrance to the school. The cycle parking areas are shown in Figure 1 below.

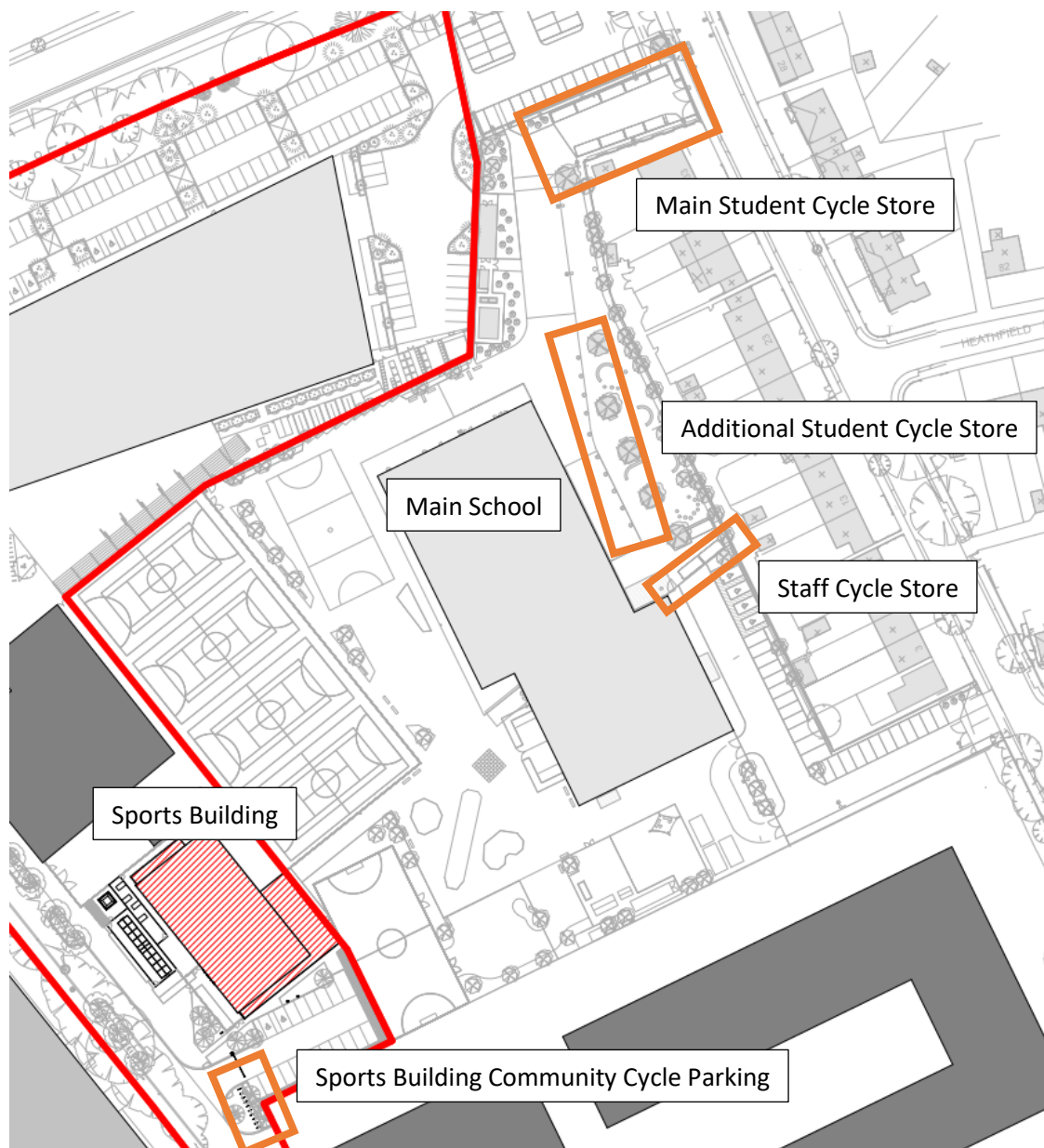


Figure 1 – Site Wide Cycle Store Locations

Figure 2 below shows a more detailed view of the cycle parking hoops being provided as part of the sports building development. These are for use by the community when using the sports building.

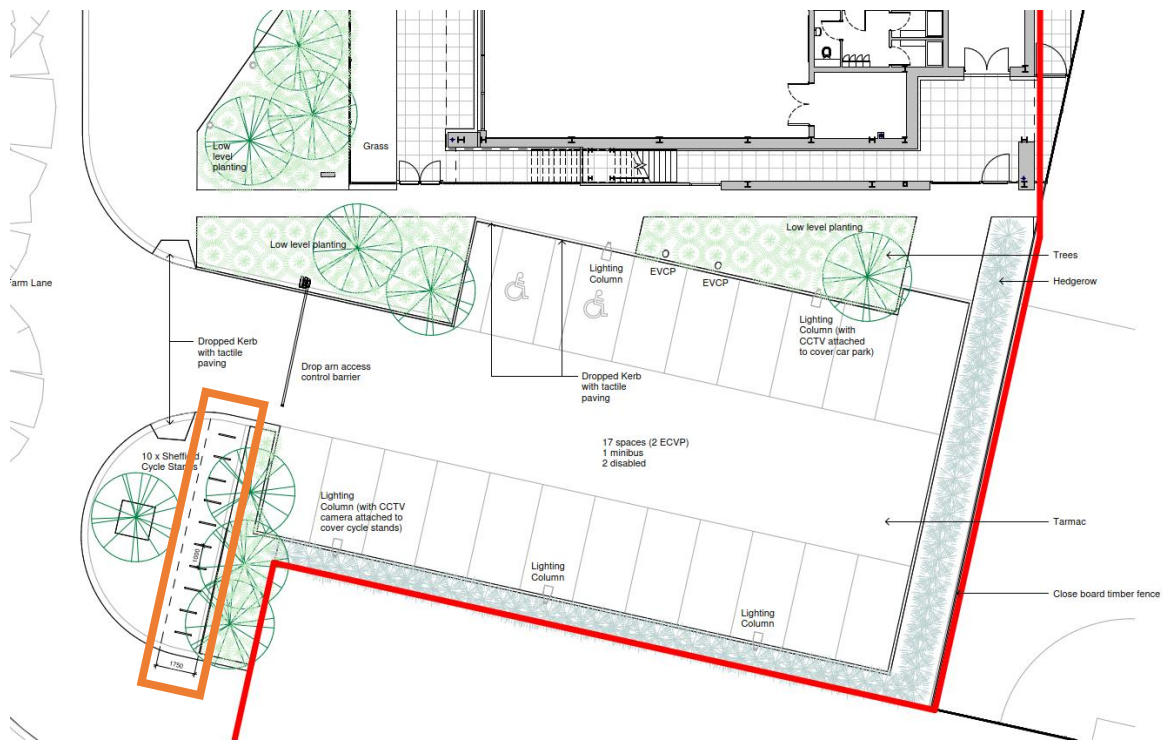


Figure 2 – Sports Building Cycle Store Location

The number of cycles parking spaces across the school site is summarised in the table below:

Main Student / Staff Cycle Parking	84
Additional Student / Staff Cycle Parking	74
Staff Cycle Parking Spaces	28
Sports Building Community Cycle Parking Spaces	20