

Richmond-upon-Thames College

Landscape and Public Realm Strategy

Richmond upon Thames College
and Richmond upon Thames School
Sports Halls Planning Application

Version 2
April 2022
Prepared by LUC



Document control

Version	Date	Status	Prepared	Approved
1.0	24 March 2022	DRAFT - For Planning	AS/ EA	EP
2.0	5 April 2022	For Planning	AS/EA	EP

Project
Richmond upon Thames College and Richmond upon Thames
School Sports Halls Planning Application

Client
Richmond upon Thames College

LUC Project Number
6377

Ref
6377-LD-REP-801

LUC project team
Ed Phillips, Project Director
Antonia Serantoni, Project Manager
Elena Alvarez, Project Landscape Architect
Tom Bradford, Project Landscape Architect
James Lamb, Project Landscape Architect

Collaborators
Architecture - 3BM
Architecture - ECE Architecture
Planning - RPS

Contents

Chapter 1 Introduction		
Introduction	5	
<hr/>		
Chapter 2 Context and Masterplan Principles		
Site wide landscape principles	10	
Places	11	
Concept Masterplan	12	
Landscape elements	13	
<hr/>		
Chapter 3 Landscape Proposals		
College	16	
Marsh Farm Lane, STEM, Plaza	20	
College Sports Hall Extension and refurbishment	25	
School Sports Hall	29	
<hr/>		
Chapter 4 Soft Landscape Strategy		
College Sports Hall Soft Landscape Proposals	34	
School Sports Hall Soft Landscape Proposals	35	
Trees	36	
Planting palette	37	
Planting details	38	
<hr/>		
Chapter 5 Hard Landscape and Street Furniture		
Hard Landscape and Street Furniture	42	
<hr/>		
Chapter 6 Landscape Maintenance		
Landscape Maintenance	46	
<hr/>		
Appendices		
6377-LD-PLN-190		
6377-LD-PLN-180		
6377-LD-PLN-181		

Chapter 1

Introduction



Introduction

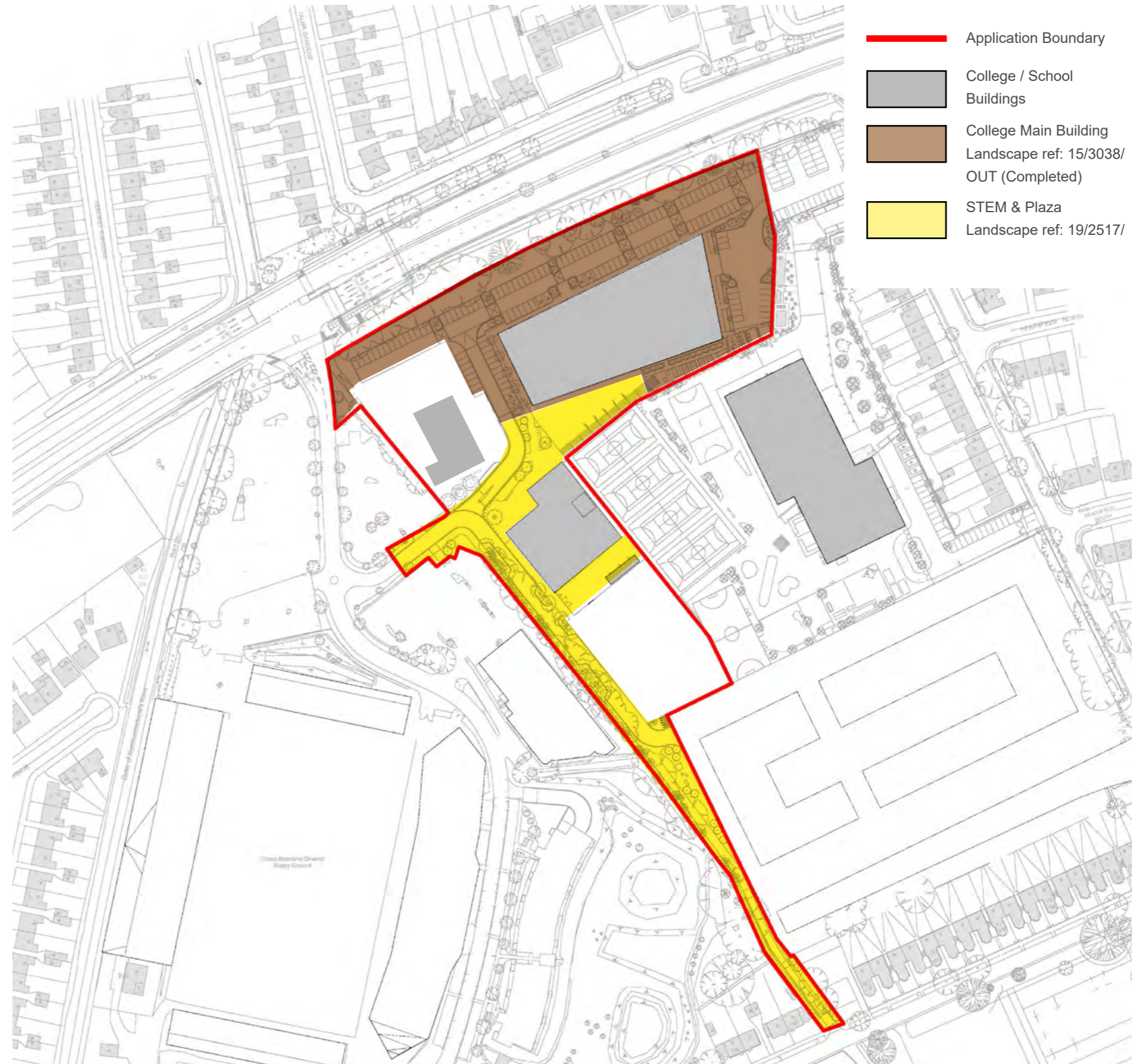
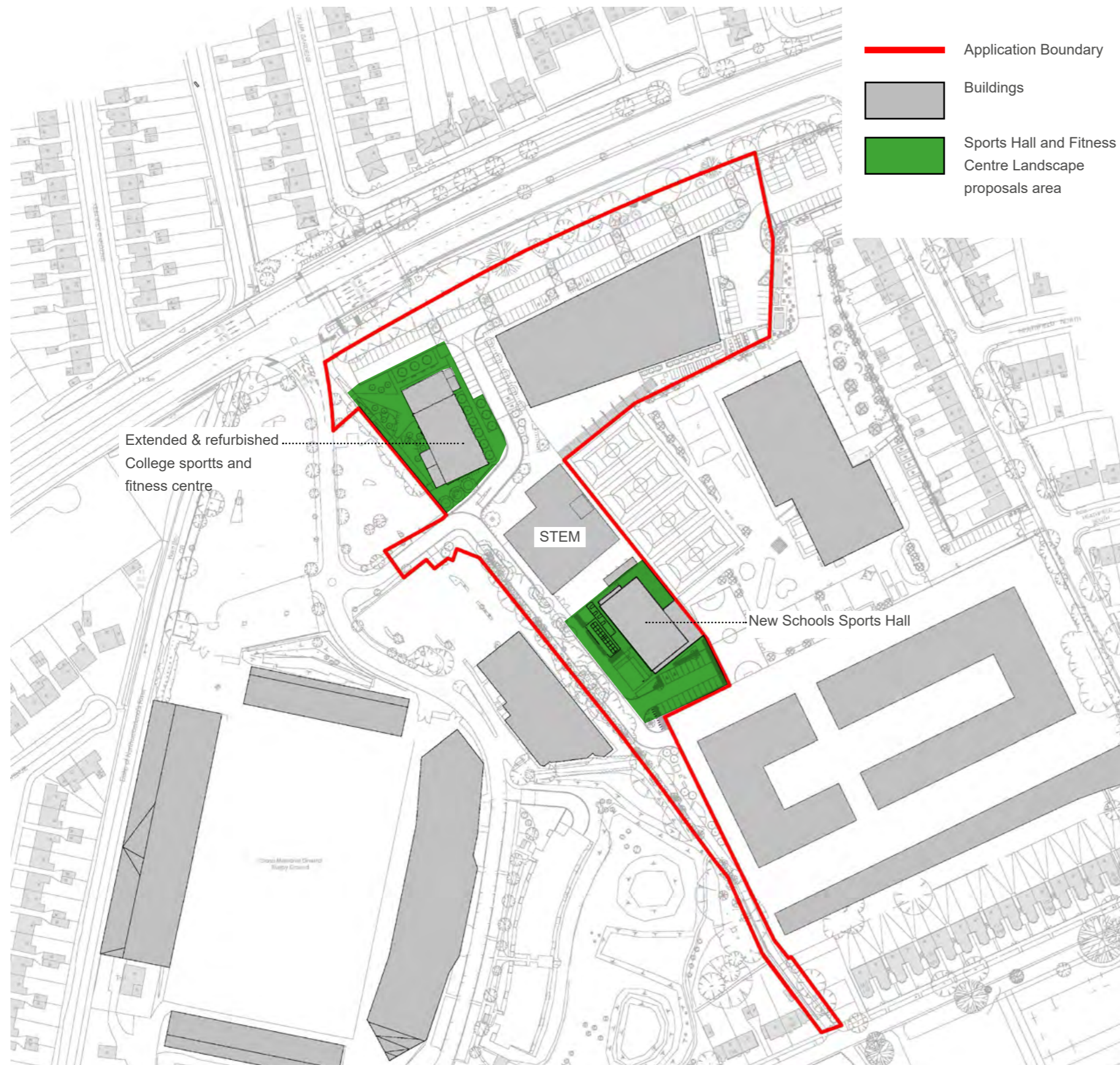


Figure 1: Application Site showing previously consented buildings and landscape

Introduction



Purpose of Document

This document supports a drop in Planning Application for the Main College/ Tech Hub Development Zone of the Richmond Education & Enterprise campus as defined under outline planning consent 15-3038-OUT.

The document describes:

1. Generally, the overarching setting and strategy for the landscape and public realm to provide context to the proposals. This includes the proposals for the completed main college building and the proposals for STEM building and arrival plaza, as shown in Figure 1.
2. Specifically, the landscape proposals for the refurbishment and extension for the existing College Sports Hall and the development of a new Sports Hall for Richmond Upon Thames School, as shown in Figure 2.

The Main College Development Zone is part of a wider masterplan that includes the Residential Development Zone, the Playing Fields Development Zone and the Richmond School Development Zone.

Site Address

Richmond Upon Thames College, Langhorn Drive, Twickenham TW2 7SJ

Site Size

2.24ha or 22,395sqm

Applicant Names

Richmond upon Thames & Wandsworth Council and Richmond upon Thames College

Description of Development

“Alterations and extension to existing Sports Hall including associated landscaping within the Tech Hub Development Zone to replace Tech Hub building as defined under application 15/3038/OUT, and erection of Sports Hall with associated car parking, landscaping, and other works within the Main College Development Zone including erection of STEM building as approved under application 19/2517/RES.”

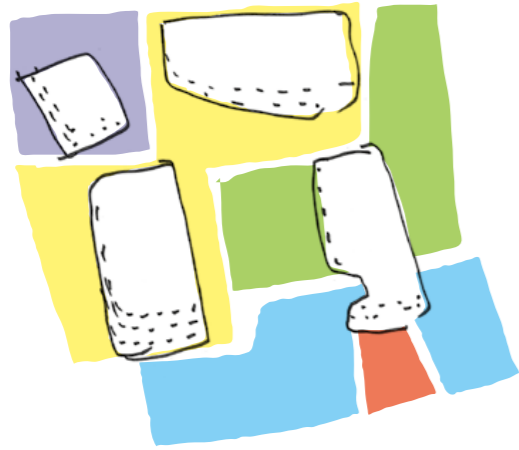
Figure 2: Application Site showing extent of proposed landscape associated with Sports Buildings drop-in application

Chapter 2

**Concept and Masterplan
Principles**

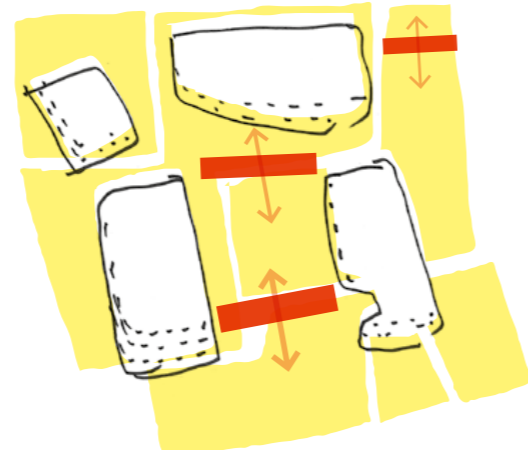


Site wide landscape principles



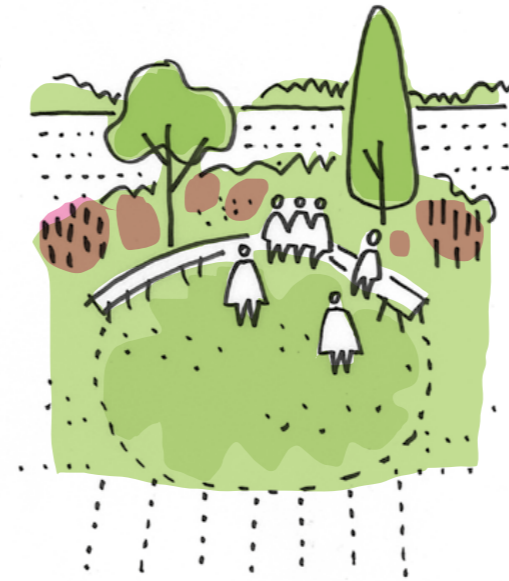
Distinct Identities & Access

- Legible
- Distinct visual identities
- Separate and easily manageable access



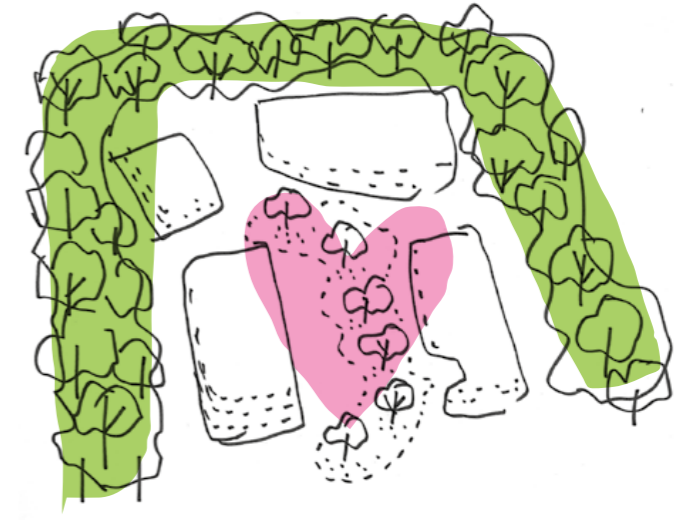
Cohesive Whole, Shared Assets

- Coherent, unified feel
- Safe internal routes
- Managed sharing



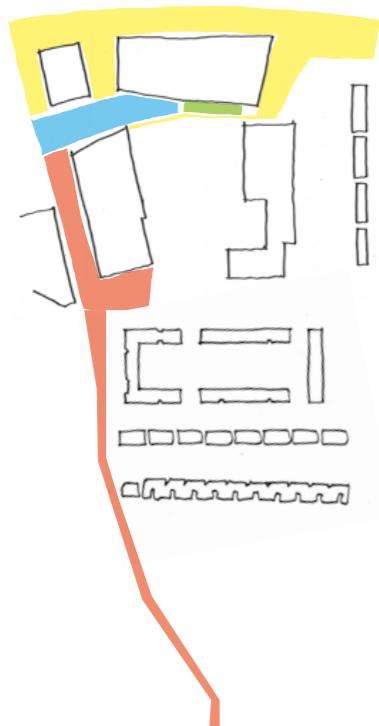
Vibrant & Characterful

- Landscape garden character
- Safe, comfortable environment
- Maximum benefits



Managed Boundary, Clear Interior

- Secure boundaries
- Wildlife corridors
- Clear interior & sightlines
- Easy supervision



The masterplan site is considered in relation to the following spatial typologies:

1. Plaza

- Managed access, legible arrival space
- Works both actively and passively
- Outward facing, promotes visual identity

2. Corridor

- Transit space, safe, secure, public
- Design complimentary to buildings

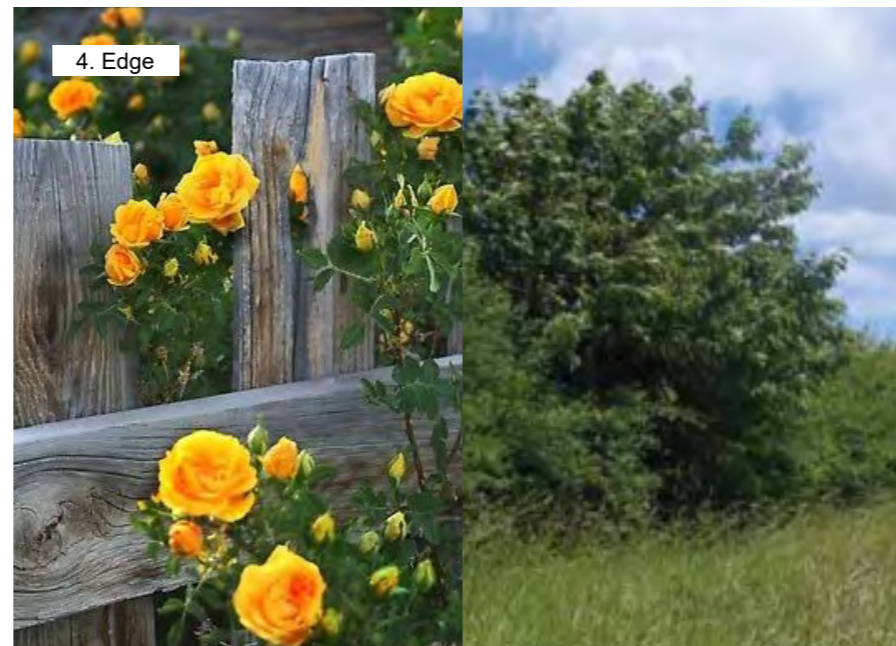
3. Garden

- Passive recreation space
- Landscape garden character
- Space for horticulture or just sitting out on grass
- Open / no hiding places

4. Edge

- Secure managed boundaries with access control
- Open / visually solid as required
- Softened with planting so not too imposing

Places



These principles diagrams were developed by LUC in 2015 to develop the brief for the landscape across the whole Richmond Education & Enterprise Campus.

Distinct Identities & Access

The aim is to create a series of legible places within the campus, with their own distinct visual identities. Each of the places to have separate and easily manageable accesses.

Cohesive Whole, Shared Access

The risk of maintaining each place with its own identity is that the campus feels fragmented. A key aim is to maintain a coherent, unified feel across the campus, using safe and legible internal routes to promote a culture of sharing.

Vibrant & Characterful

Across the campus, and particularly within the schools, the landscape will be set out on the principle of a landscape garden; using vistas, focal points and enclosure; open and secluded spaces linked by gateways, features and garden structures. This will be followed through the treatment of the boundaries, borders to create a safe, comfortable environment.

Managed Boundary, Clear Interior

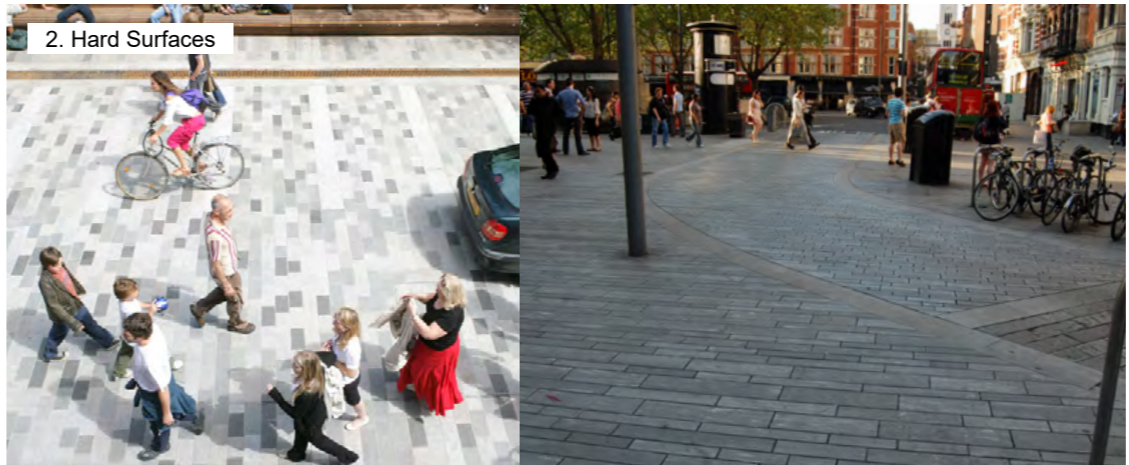
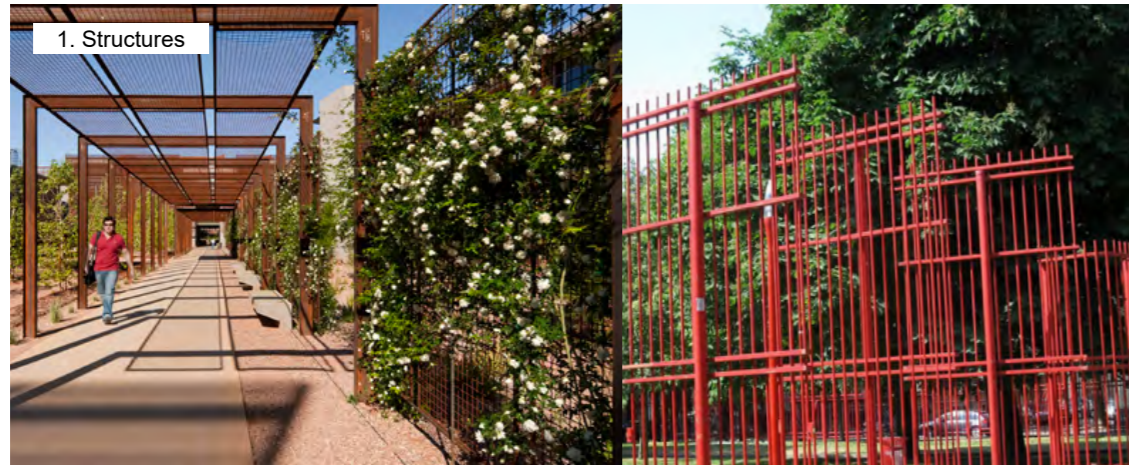
Supervision and secure boundaries are key considerations - the external boundary running around the site - Egerton Road, Chertsey Road and Marsh Farm Lane - is to be reinforced as a wildlife corridor - its matrix of mature trees retained as far as practicable. The dense static boundary is contrasted with new tree planting inside the site which is flowering, light and allows clear sightlines below the canopy.

Concept Masterplan



Figure 3: The concept masterplan prepared at Outline Planning Application stage set out the emergent set of spaces described above - the plaza, garden, edge and corridor, and showed how they could be applied across the site.

Landscape elements



The different spaces described previously are defined by the arrangement, appearance and various combinations of the following landscape elements.

- 1. Structures**
 - Coherent language of structures
 - Legible link between different landscape spaces
- 2. Hard Surfaces**
 - Robust hard wearing surfaces
 - Accessible, non-slip
 - Visually complementary to buildings
- 3. Soft Landscape**
 - Soft, calm inviting places to sit
 - Suitable spaces for horticulture, allotments.
- 4. Trees**
 - Retain as many existing trees as practicable
 - Reinforce solid, static native boundary to site
 - New flowering tree inside site - clear stems and light canopies
- 5. Boundaries**
 - Common language of boundaries across site
 - Visually solid or open as required
 - Maximise benefit to neighbours
 - Manage access, minimise supervision requirement
- 6. Furniture**
 - Common language across site
 - Robust, easily maintainable

