

FIGURES



Figure 1.1 Site Location Source: Google Earth Mapping (2024)



Figure 4.1 British Geological Survey Bedrock Geology Mapping Extract (1:50,000 scale) Source: BGS Web Map Services (<https://www.bgs.ac.uk/data/services/wms.html>)

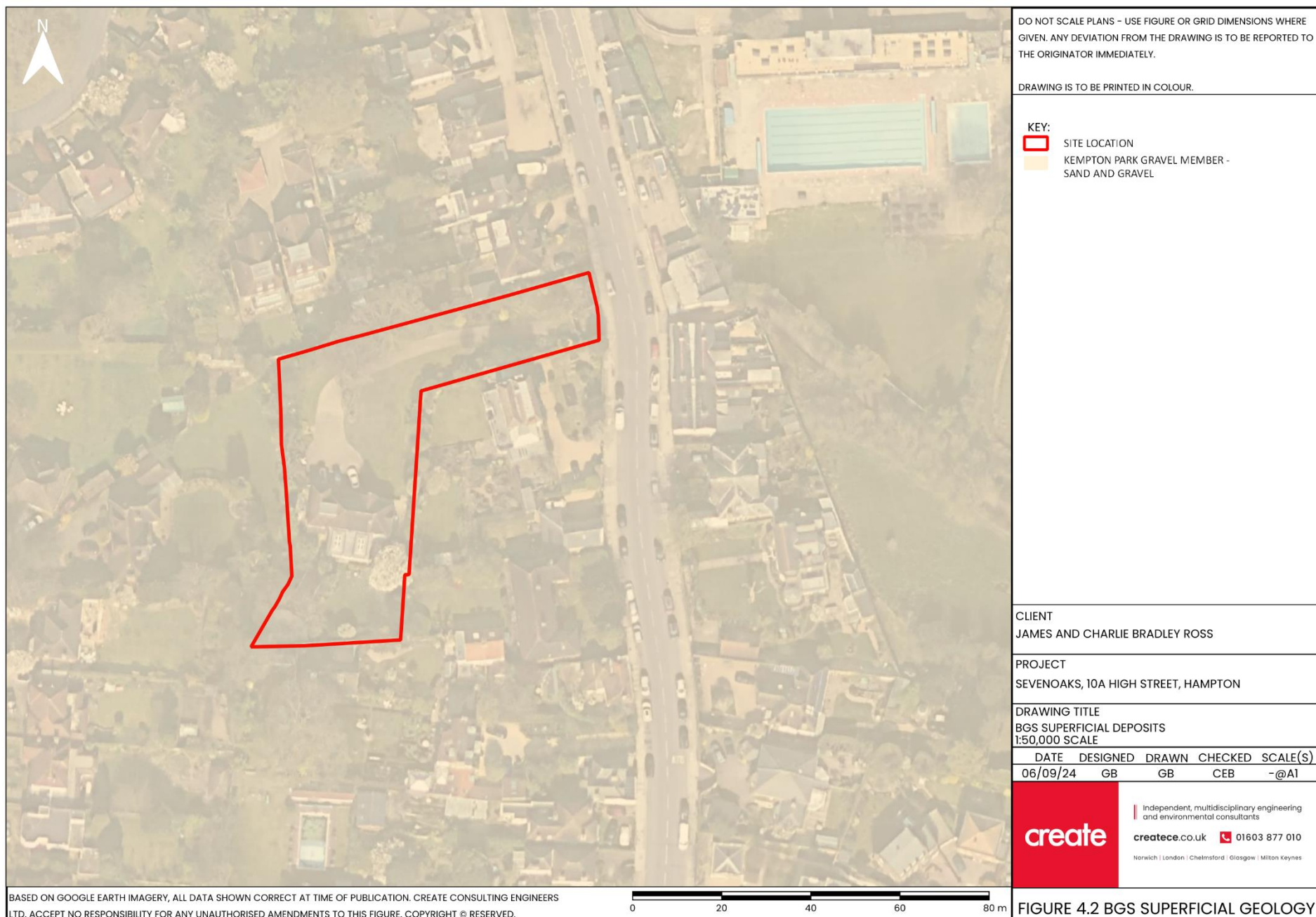


Figure 4.2 British Geological Survey Superficial Geology Mapping Extract (1:50,000 scale) Source: BGS Web Map Services (<https://www.bgs.ac.uk/data/services/wms.html>)

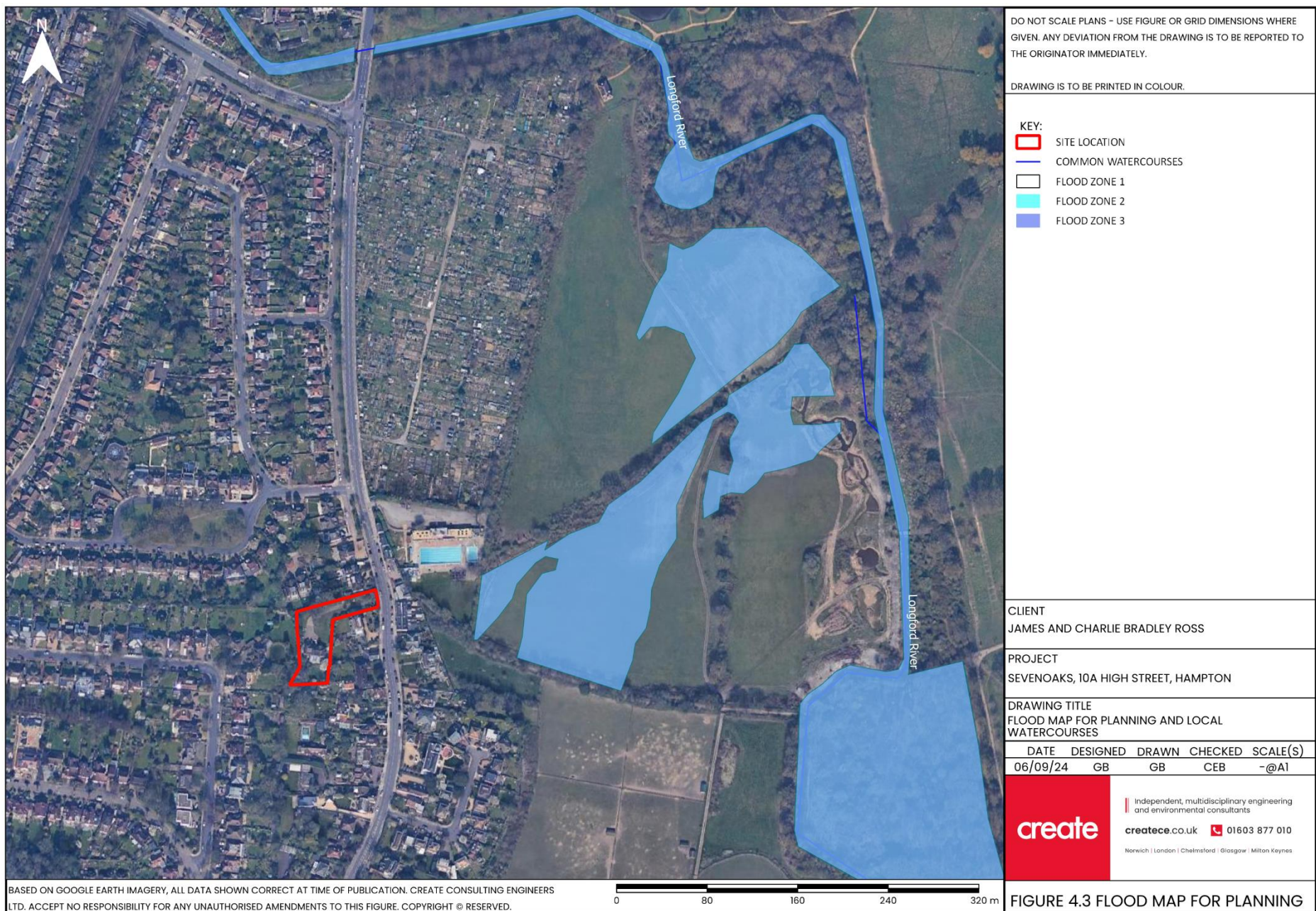


Figure 4.3: Environment Agency's Fluvial/Tidal Flood Map and Watercourses Source: Defra Data Services Platform (<https://environment.data.gov.uk/>).

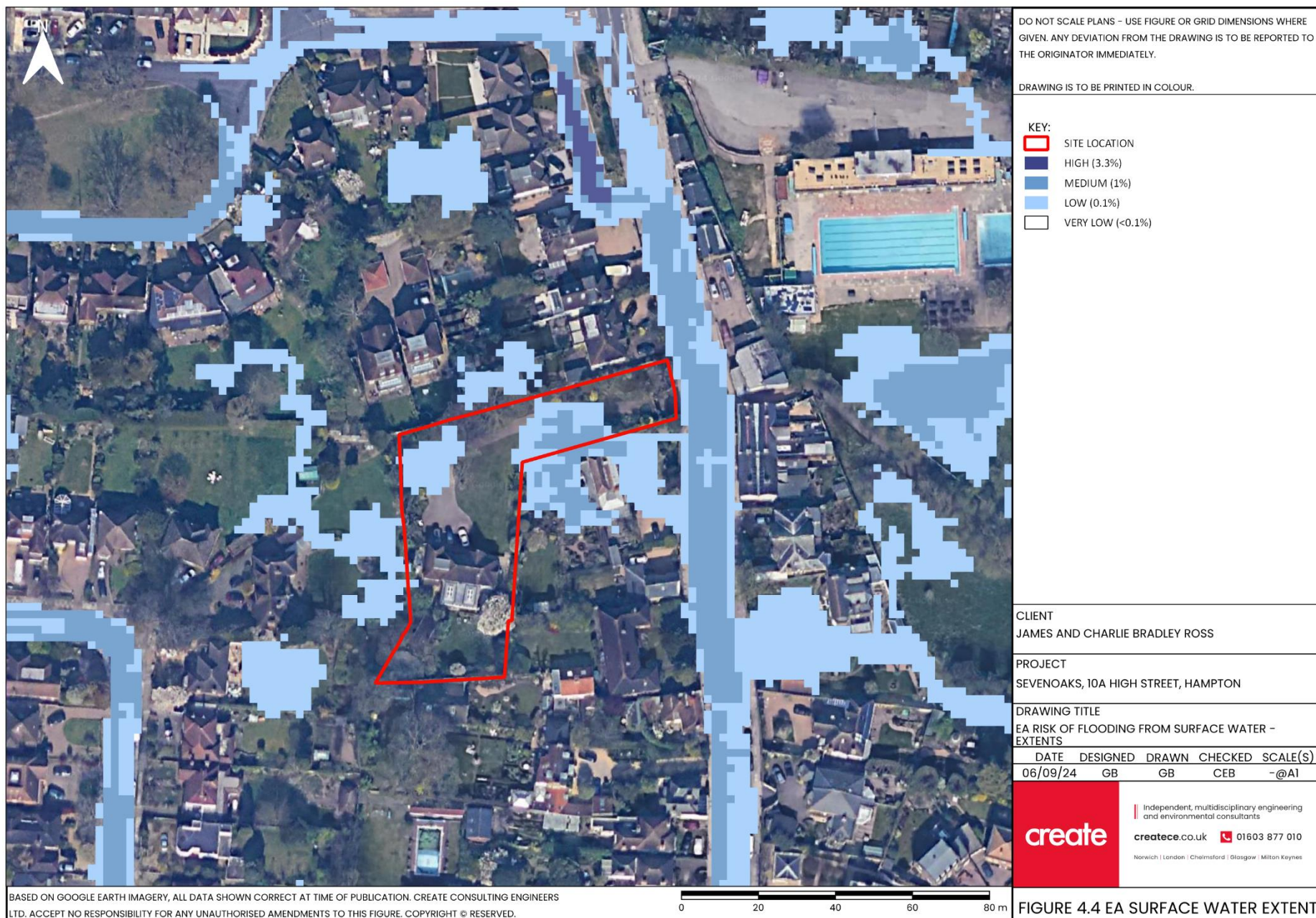


Figure 4.4: Environment Agency's Surface Water Flood Extent Map Source: Defra Data Services Platform (<https://environment.data.gov.uk/>).

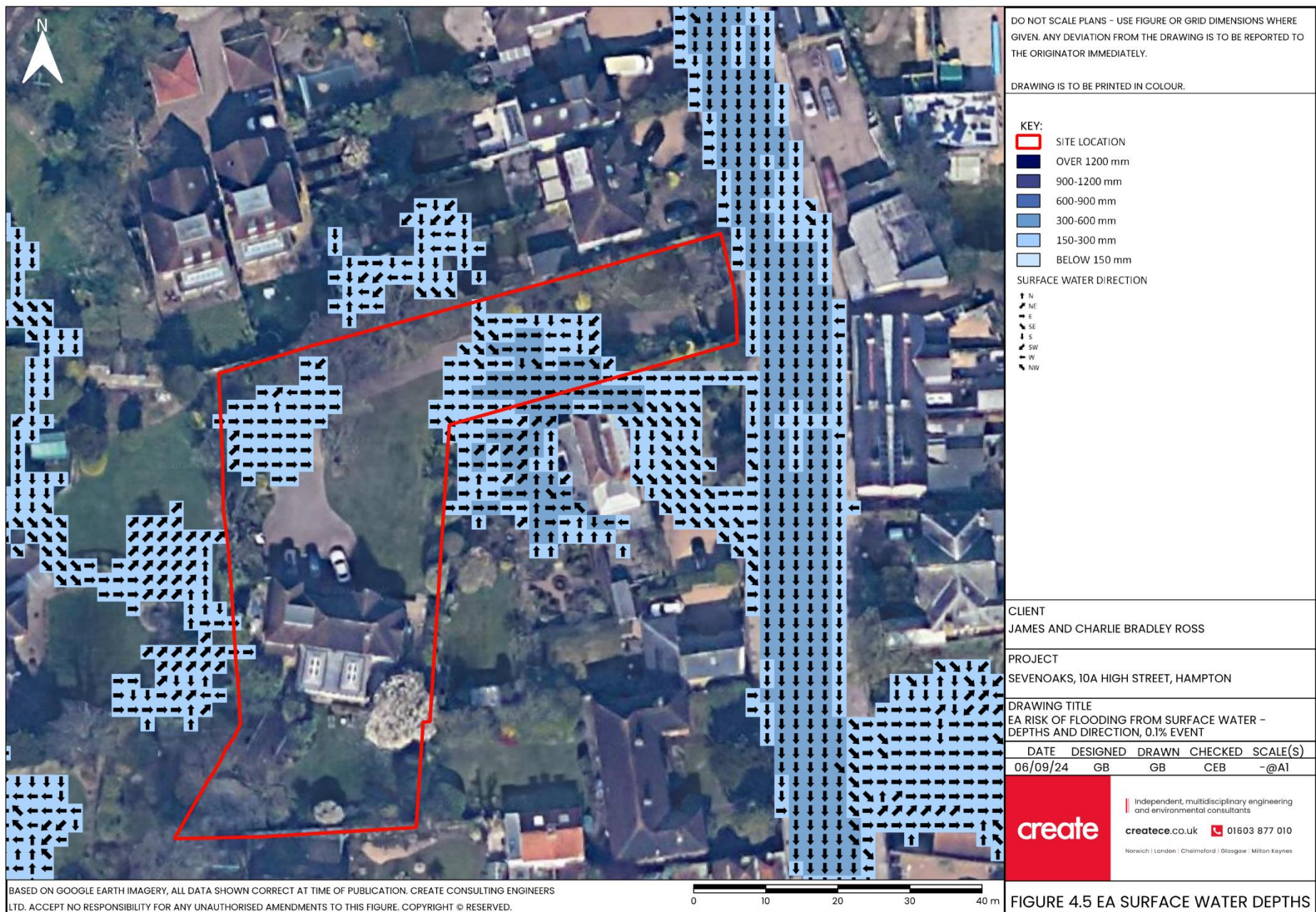


Figure 4.5: Environment Agency’s Surface Water Flood Depths Map 1 in 1000 Year Event (0.1%) *Source: Defra Data Services Platform (<https://environment.data.gov.uk/>).*

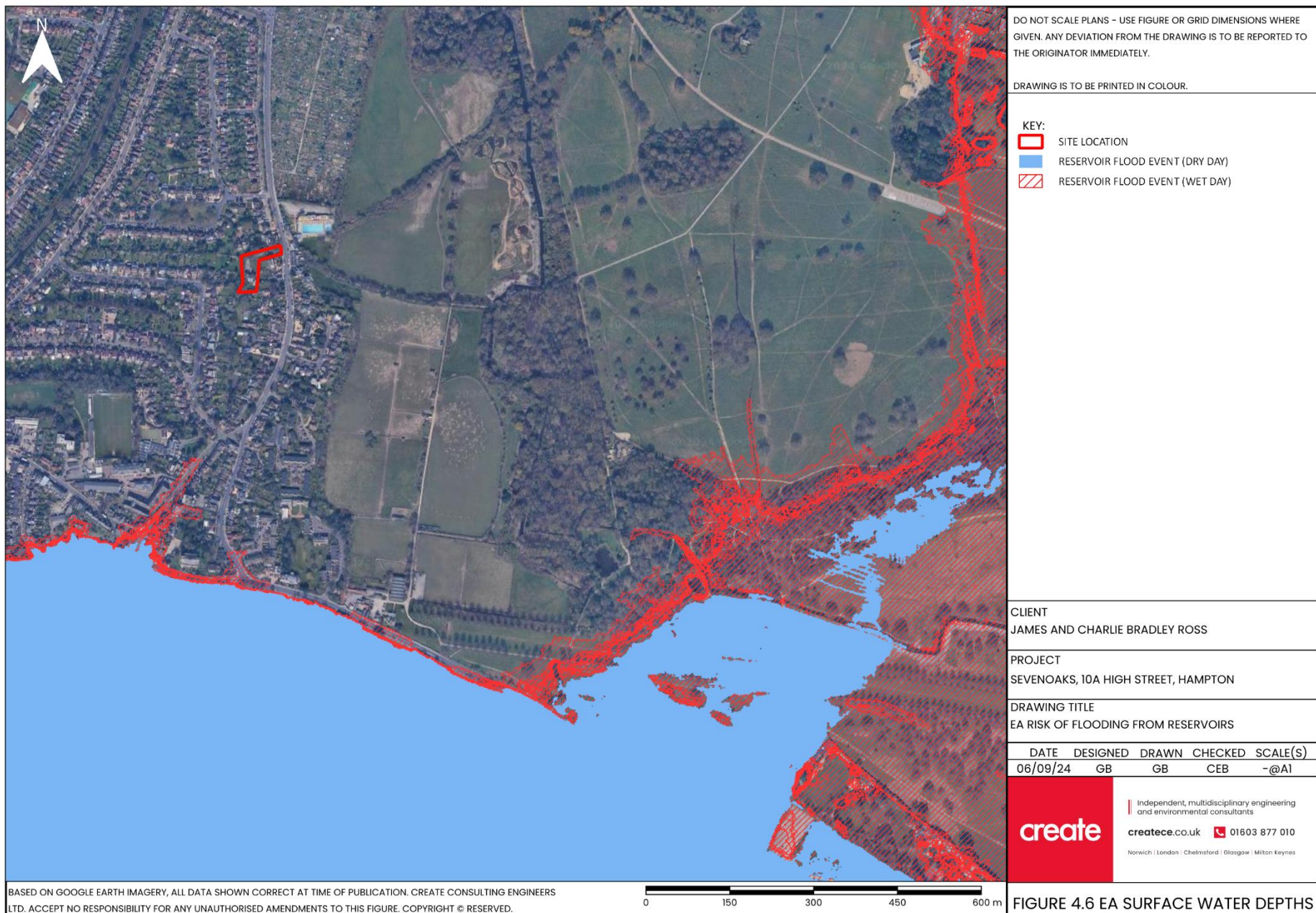


Figure 4.6 Environment Agency's Risk of Flooding from Reservoirs *Source: Defra Data Services Platform (<https://environment.data.gov.uk/>).*