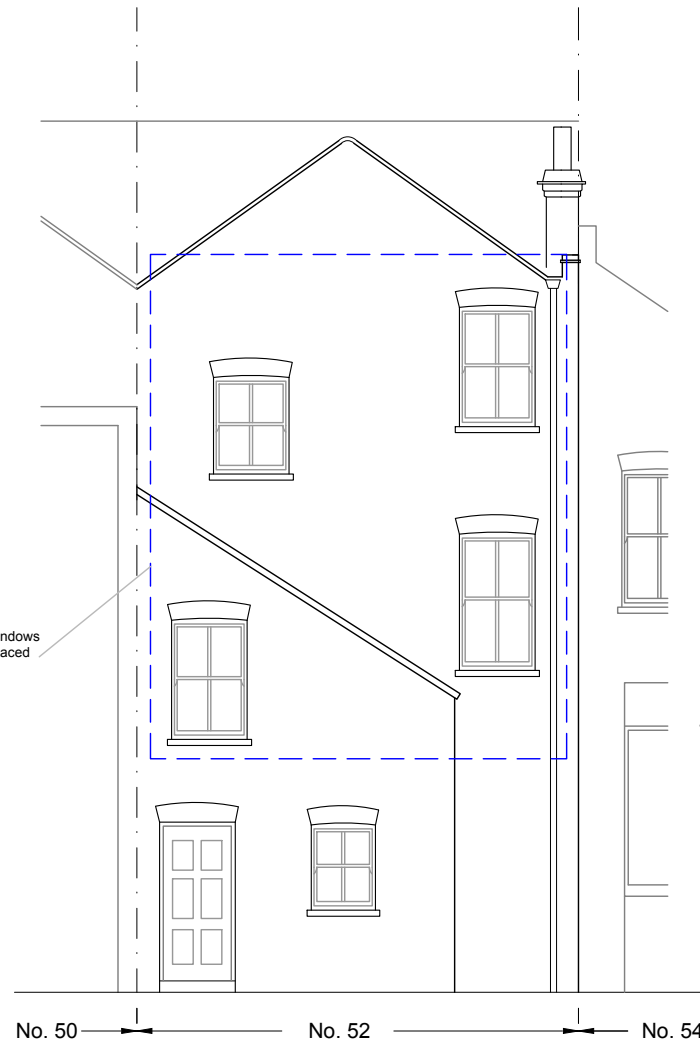


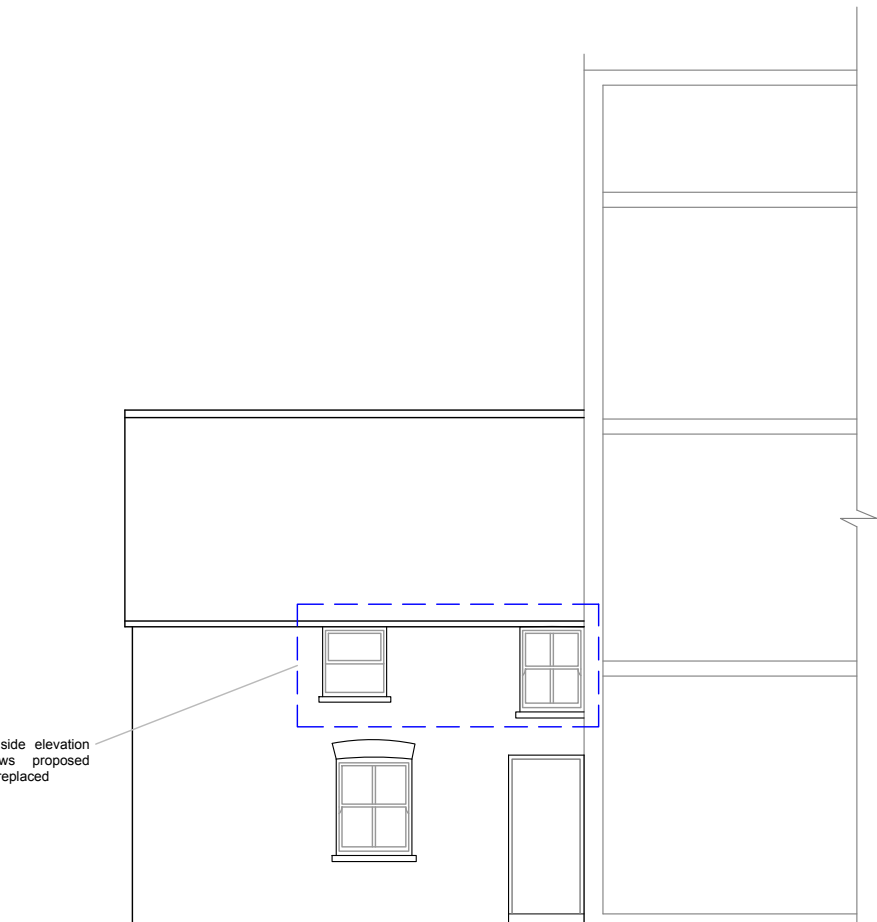
FRONT ELEVATION

All first and second floor front elevation vertical sash timber windows to No.52 King Street to be replaced with new double glazed uPVC vertical sliding sash windows. Windows to be white with run through sash horns to match existing.



REAR ELEVATION

All first and second floor rear elevation vertical sash timber windows to No.52 King Street to be replaced with new double glazed uPVC vertical sliding sash windows. Windows to be white with run through sash horns to match existing.



REAR SIDE ELEVATION

First floor rear side elevation windows to No.52 King Street to be replaced. LHS kitchen timber casement window to be replace with new double glazed uPVC casement. RHS bathroom timber vertical sash to be replaced with new double glazed uPVC vertical sliding sash windows.



SCALE: 1:100

Project:	First and Second Floor, 52 King Street
Title:	Proposed Elevations - Windows Replacement
Client:	Ordnance Estates Ltd C/o Hamways
Date:	August 2024
Scale:	1:100 @ A3
Dwg No:	KS22162 - 04

**FBJ**