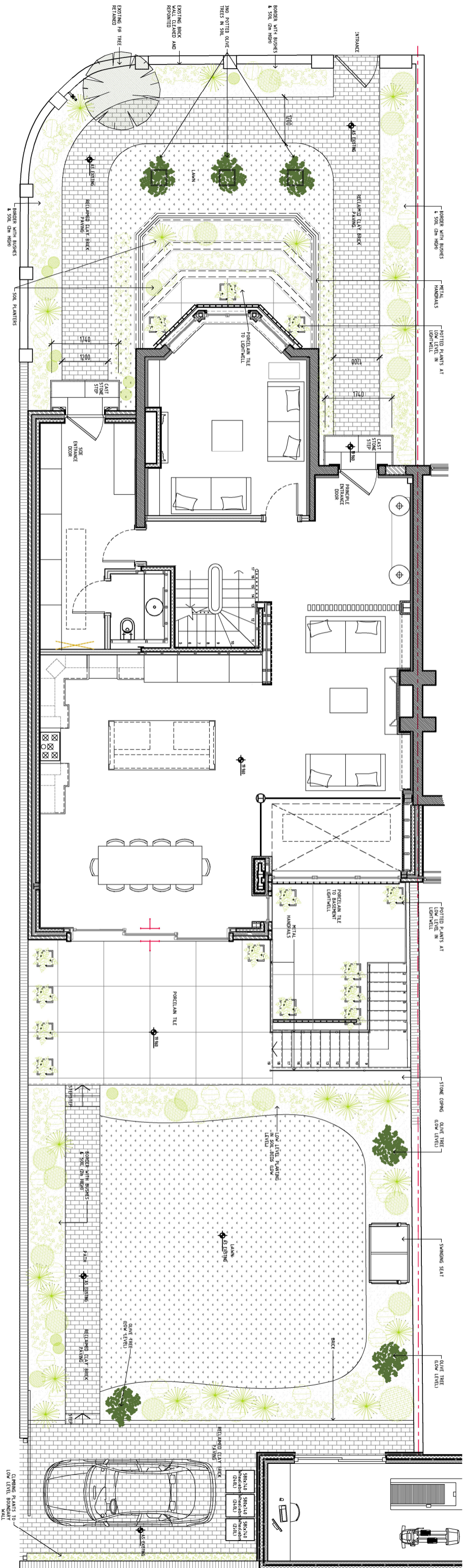


NOTES:
 PROPOSED OLIVE TREES POSITIONED IN SHELTERED, WELL-DRAINED POSITION.
 PLANTED IN SPRING AFTER THE RISK OF WINTER FROST.
 ENSURE PLANTING BEFORE THE END OF JUNE TO GIVE TREES TIME TO ESTABLISH BEFORE THE FOLLOWING WINTER.
 FEEDING: LIQUID FERTILISER EVERY MONTH FROM SPRING TO AUGUST, ADD MULCH WITH WELL ROTTED MANURE EVERY YEAR. FEED WITH BLOOD, FISH AND BONE MEAL EARLY SPRING ANNUALLY.
 WINTER: WRAP IN FLEECE TO PROTECT FROM FROST AND SNOW.
 PRUNING: LIGHT PRUNING BETWEEN APRIL TO AUGUST. CUT OUT ANY DEAD TWIGS AND BRANCHES.
 IN ACCORDANCE WITH THE TREE COUNCIL 'MANAGING AND CARING FOR TREES' GUIDANCE DOCUMENT



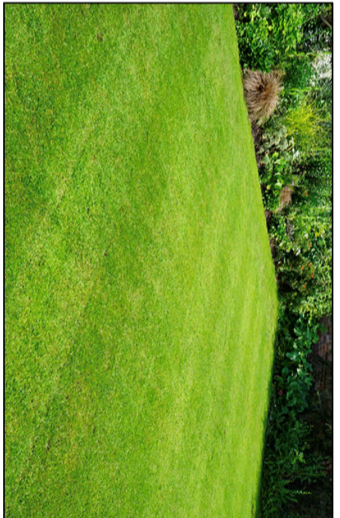
RECLAIMED CLAY PAVERS (200X50X65)



PORCELAIN EDGE CAMOSCIO 'GRIP' EXTERNAL TILES 1200X1200



DECORATIVE OLIVE TREE



TYPICAL LAWN/MIXED PLANTING



ROSE BUSH



LAVENDER BEDS

GENERAL NOTES:

Do not scale: use given dimensions only, all settings out to be verified on site and any discrepancies notified to the architect.

NOTES

DESIGN/ADVICE TAKEN FROM: CINDY MUNTZ LANDSCAPE AND GARDEN DESIGN (ROYAL HORTICULTURAL SOCIETY - LEVEL 2).
 PLANTING AND PLANT IRRIGATION SCHEME AS ADVISED BY CINDY MUNTZ LANDSCAPE AND GARDEN DESIGN



| REV | DATE | BY | DESCRIPTION |
|-----|------|----|-------------|
| | | | |

DATE
JAN 2023

SCALE
1:100 @ A3

DRAWN BY
JO

STATUS

PLANNING

DRAWING
PROPOSED SITE PLAN

DWG NO.
051-106

CLIENT
JEFF KASFIKIS

bla architects
 ARCHITECTURE - INTERIOR DESIGN - PROJECT MANAGEMENT

Studio 6, Rosebery House, 20 Rosebery Avenue, London EC1R 4RR
 Tel: 0207 778 3145, mail@bla-architects.com, www.bla-architects.com

PROJECT
281 SHEEN LANE, SW14 8RN

JOB NO.
412