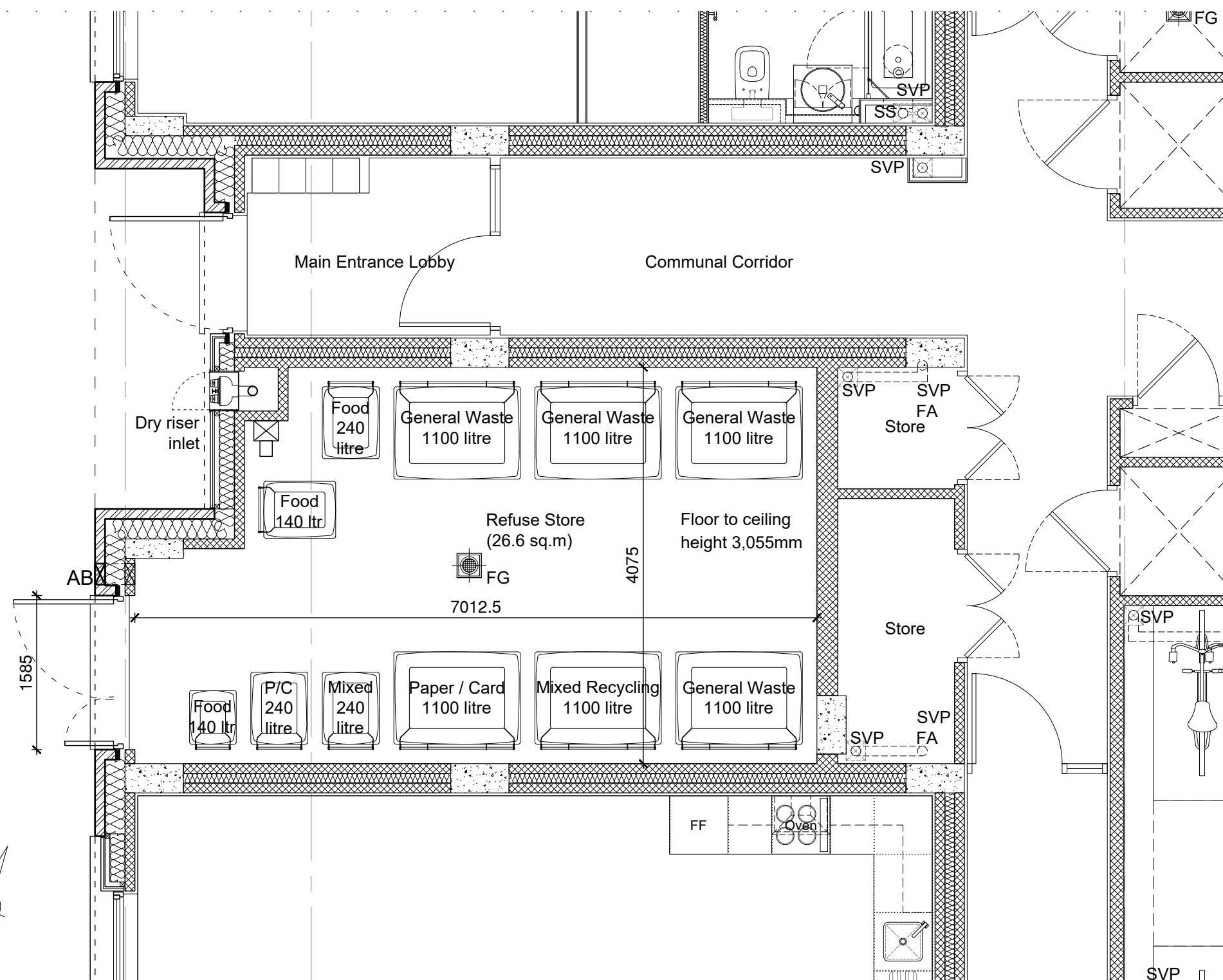


**Notes**

Do not scale this drawing.  
All dimensions to be checked by the Contractor before construction proceeds.  
This drawing is the copyright of Stanford Eatwell Architecture Ltd and shall not be in any way used or reproduced without their prior written consent.

rev.	date.	dwn.
P1	20.08.24	LS



**Key**

- SVP Soil Vent Drainage Pipe
- ⊕ FG Floor Gully
- ⊗ Wash Down Tap
- ⊠ AB Air brick (colour to match brickwork)

**Notes**

The Refuse Store has been sized to accommodate the below number of bins, in line with the *London Borough of Richmond's Refuse and Recycling: Storage and Access requirements for New Developments (December 2022)* document which sets out the total number of bins required for new developments.

- General waste >30 litres per household plus 70 litres per bedroom
- Paper / card recycling >55 litres per household
- Mixed recycling >55 litres per household
- Food waste >23 litres per household

Block F Core 2 comprises of a total 24no. dwellings and 40no. bedrooms.

- 10no. one bedroom (10 bedrooms)
- 12no. two bedroom (24 bedrooms)
- 2no. three bedroom (6 bedrooms)

**General Waste**  
 $(23 \times 30) + (40 \times 70) = 690 + 2,800 = 3,490$  litres  
so  $3,490 / 1,100 = 3.17$  (4no. 1,100 litre bins)

**Paper / Card Recycling**  
 $23 \times 55 = 1,265$  litres (1no. 1100 litre & 1no. 240 litre bins)

**Mixed Recycling**  
 $23 \times 55 = 1,265$  litres (1no. 1100 litre & 1no. 240 litre bins)

**Food Waste**  
 $23 \times 23 = 529$  litres (2no. 240 litre & 1no. 140 litre bins)

Refuse Store doors are to be timber effect Steel or Aluminium.

Drawings to be read in conjunction with overall Site Plan drawing 1597-P-001.

This drawing has been produced pursuant to the submission in relation to the discharge Conditions U0178995 / U0178996 / U0178995 of Planning Consent 22/2556/FUL.

Extract of Blocks A & F Ground Floor GA Plan showing Block F Core 2 Refuse Store



Extract of Block A & F West Elevation showing Block F Core 2 Refuse Store Entrance

**Preliminary Issue**

**Stanford | Eatwell**  
Architecture  
Chartered Architects

Thornhall Park | Bishops Cleeve | Herts | CM22 7WE  
T 01279 874413  
E se@stanfordeatwell.co.uk  
W www.stanfordeatwell.co.uk

project Gregg's Bakery Site, Twickenham  
London Square

title **Block F Core 2 Refuse Store**

scale 1:50 @ A2 dwn LS

date July 2024 chk RH

drg no. **1597-P-006** rev P1