

Extract of Block C3 Ground Floor GA Plan showing typical Cycle & Bin Store arrangement for House Types 3 & 8

**Notes**

Do not scale this drawing.  
All dimensions to be checked by the Contractor before construction proceeds.  
This drawing is the copyright of Stanford Eatwell Architecture Ltd and shall not be in any way used or reproduced without their prior written consent.

rev.	date.	dwn.
P1	20.08.24	LS

**Key**

- RWP Rainwater Pipe
- ▭ AB Air brick

**Notes**

The Refuse Store has been sized to accommodate the below number of bins, in line with the *London Borough of Richmond's Refuse and Recycling: Storage and Access requirements for New Developments (December 2022)* document which sets out the total number of bins required for new developments.

The only exception being the provision of a Garden Waste bin. The planning application was submitted in September 2022, before the new Council standards were published in December 2022. We have endeavored to provide the required number of bins as set out in the latest December 2022 edition but we have been unable to accommodate a garden waste bin (see Technical Note).

The gardens to all houses are small and residents are unlikely to subscribe to the Council garden waste service for such a small garden.

- General waste >30 litres per household plus 70 litres per bedroom
- Paper / card recycling >55 litres per household
- Mixed recycling >55 litres per household
- Food waste >23 litres per household
- Garden waste 240 litres per household

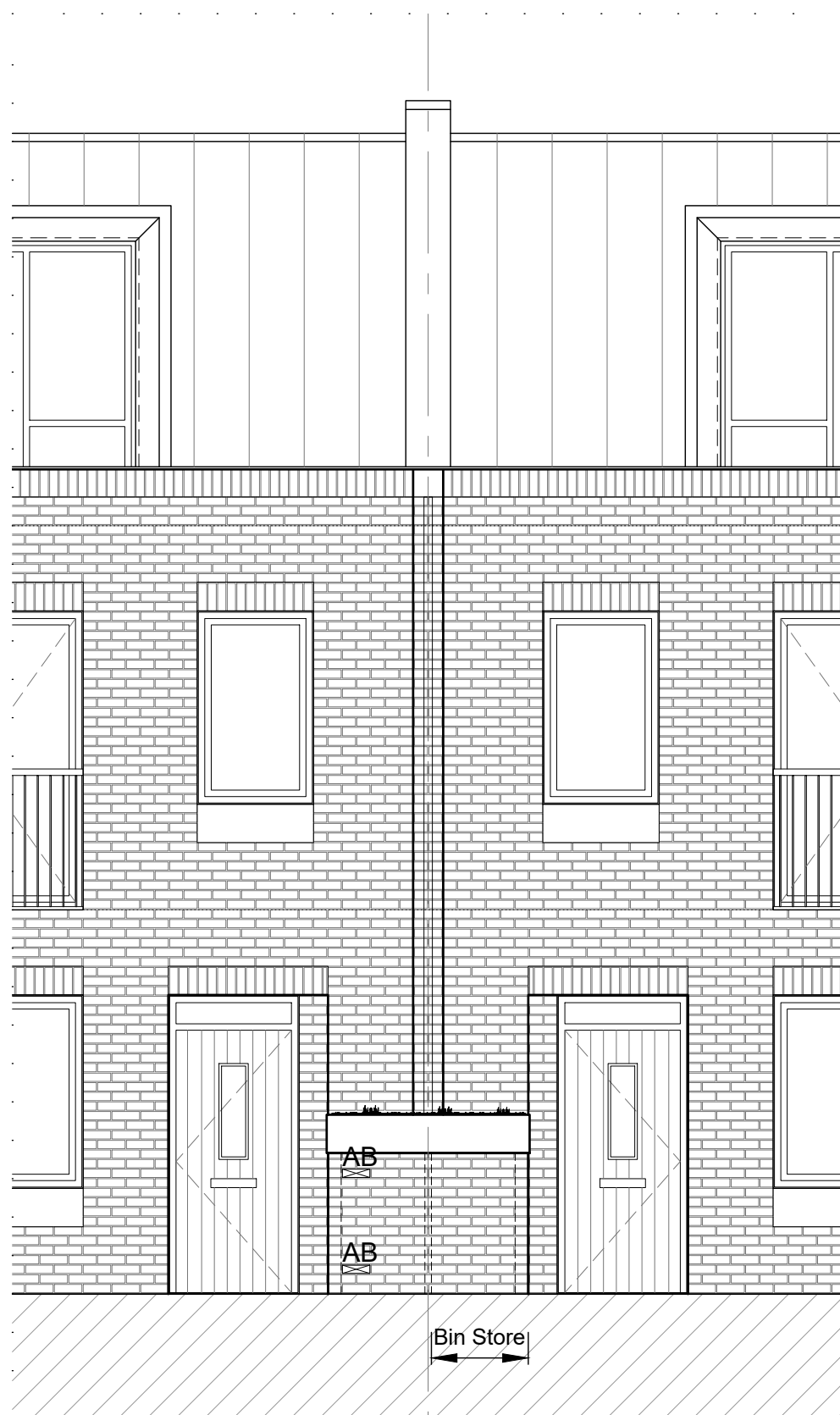
House Types 3 & 8 are 3 bedroom houses.

General Waste  
 $30 + (3 \times 70) = 30 + 210 = 240$  litres  
 so  $240 / 90 = 2.66$  (3no. 90 litre bin)

- Paper / card recycling 1no. 55 litre box
- Mixed recycling 1no. 55 litre box
- Food waste 1no. 23 litre box

Drawing to be read in conjunction with overall Site Plan drawing 1597-P-001.

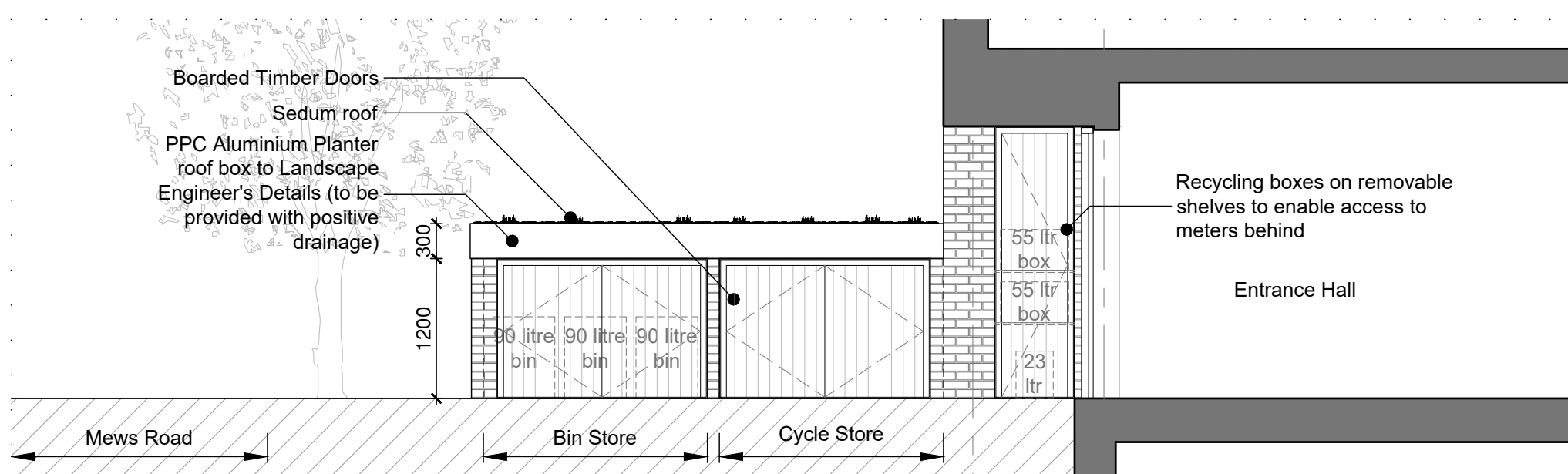
This drawing has been produced pursuant to the submission in relation to the discharge Conditions U0178995 / U0178996 / U0178995 of Planning Consent 22/2556/FUL.



Extract of Block C3 Front Elevation showing typical Cycle & Bin Store for House Types 3 & 8 in Elevation



Planning CGI showing design intent for external Cycle & Refuse Stores



Extract of Block C3 Section showing typical Cycle & Bin Store for House Types 3 & 8 in Elevation

**Preliminary Issue**

**Stanford | Eatwell**  
 Architecture

Chartered Architects

Thornhall Park | Bishops Stortford | Herts | CM22 7WE

T 01279 874413  
 E se@stanfordeatwell.co.uk  
 W www.stanfordeatwell.co.uk

project Gregg's Bakery Site, Twickenham  
 London Square

title House Types 3 & 8 Refuse Store

scale 1:50 @ A2 dwn LS

date July 2024 chk RH

drg no. 1597-P-009 rev P1