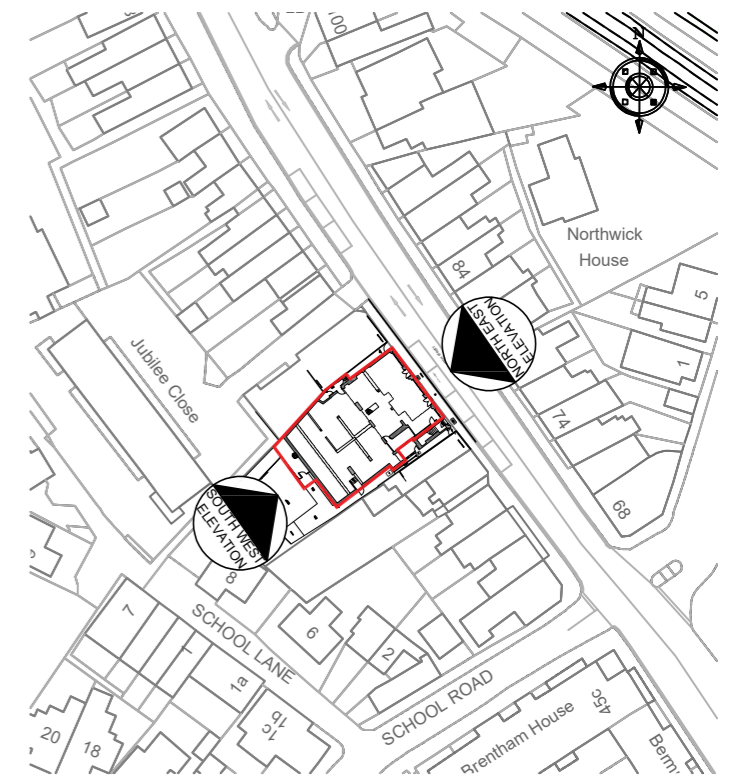




01 EXISTING NORTH EAST ELEVATION
118165 220 1:100@A3



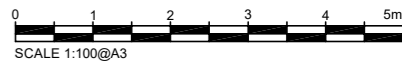
03 GROUND FLOOR KEY PLAN
118165 211 NTS



Existing doors retained and kept locked shut

Timber single sliding automatic door to provide level access to retail unit. Painted to match facade. 1no. radar detector and 1 no radar with threshold safety; battery back up in case of power failure; 6no. safety beams; 1 no. multiprogrammable function switch; 1 no lockable key switch with five keys. door to fail-safe open in the event of fire alarm activation.

New Timber to shopfront allow for new level access entrance. Painted and styled to match existing



02 APPROVED NORTH EAST ELEVATION
118165 220 1:100@A3- PLANNING REF: 24/1586/FUL

Revision	19.09.24	First Issue	VA
Date		Description	Drawn
architects project managers cost consultants			
2nd Floor 19 Swan Yard Hillingdon, London N1 1BD T:0203 637 8990			
Status	PLANNING		
Client	PAINTED FURNITURE COMPANY		
Project Title	HAMPTON WICK 59-61 HIGH STREET, KT1 4DG		
Drawing Title	EXISTING & APPROVED NORTH EAST ELEVATION SITE REF: - 118165		
Project Number	P_118165	Drawing Number	220
Revision	-	Drawn	JN
Checked	VA	Scale	AS SHOWN@A3
Date	19.04.2024		
The content of this drawing is the property of J.A Limited and may not be copied in whole or part without formal consent.			