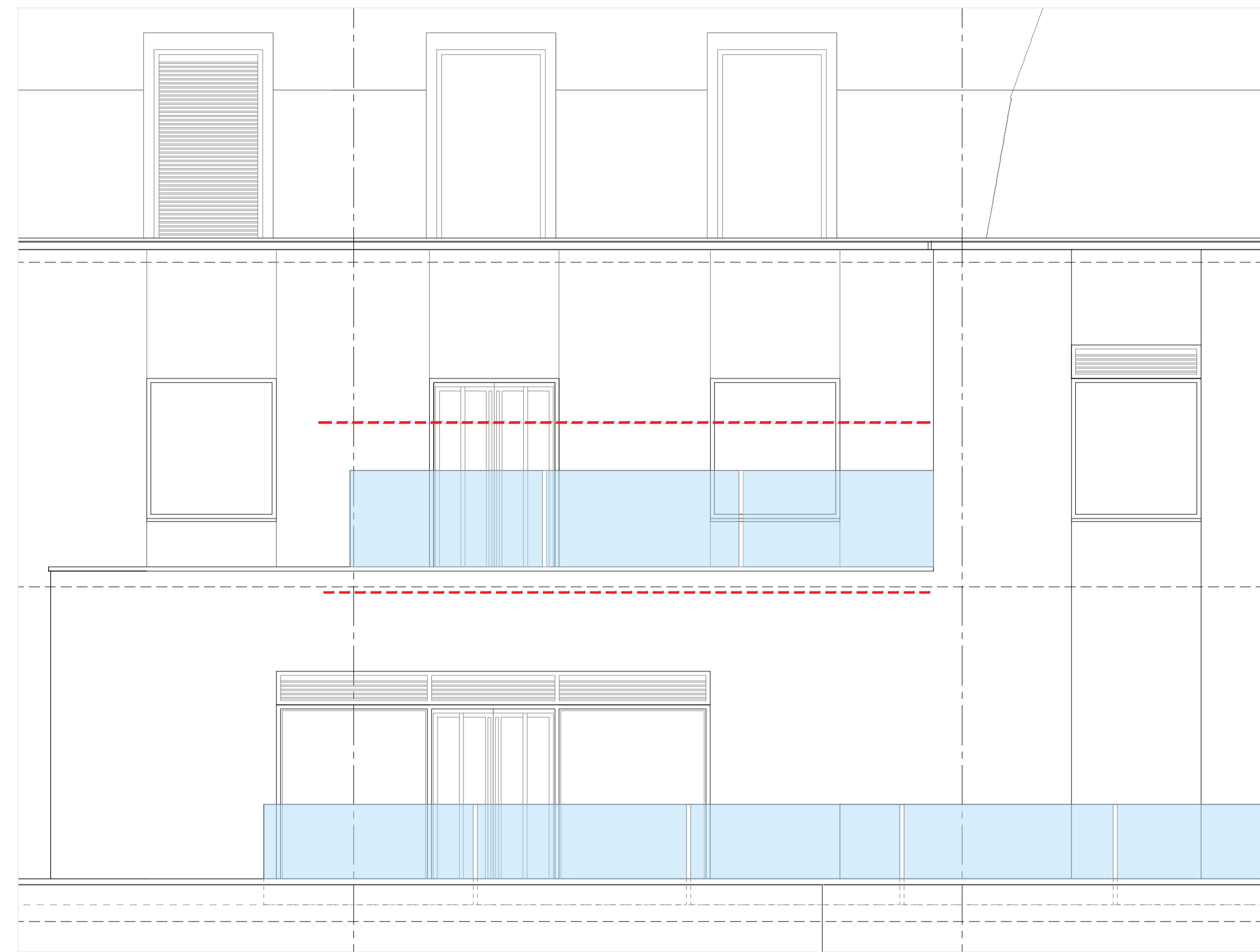


THIRD FLOOR BALUSTRADE DETAIL  
Scale 1:10

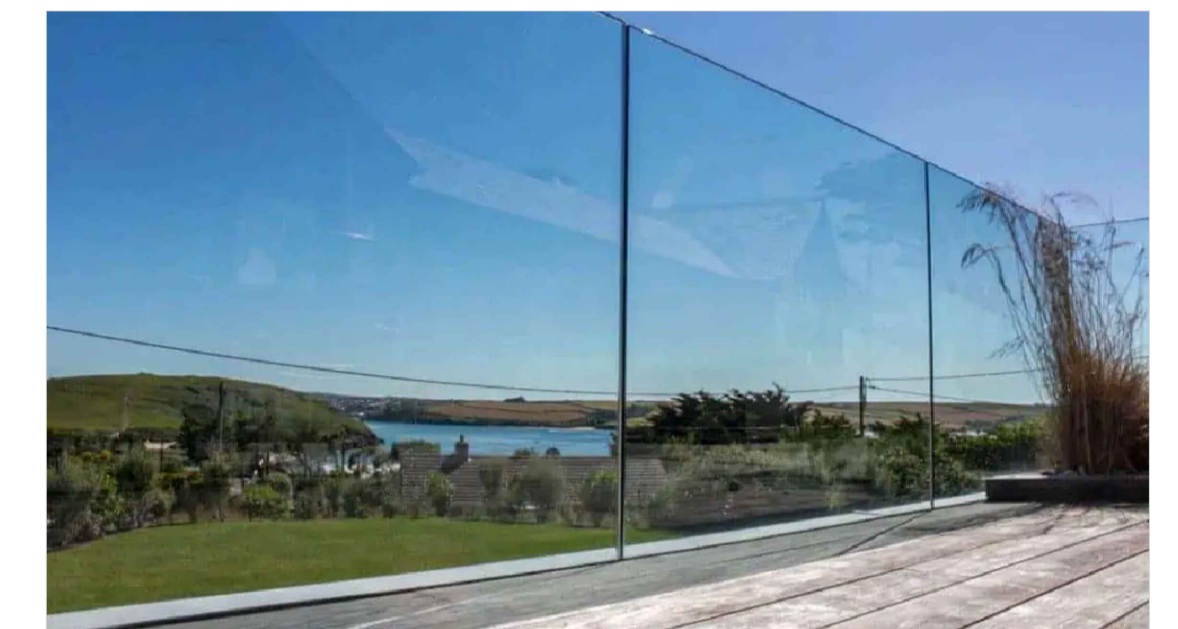


PAVED COURT ELEVATION- THIRD FLOOR  
Scale 1:50

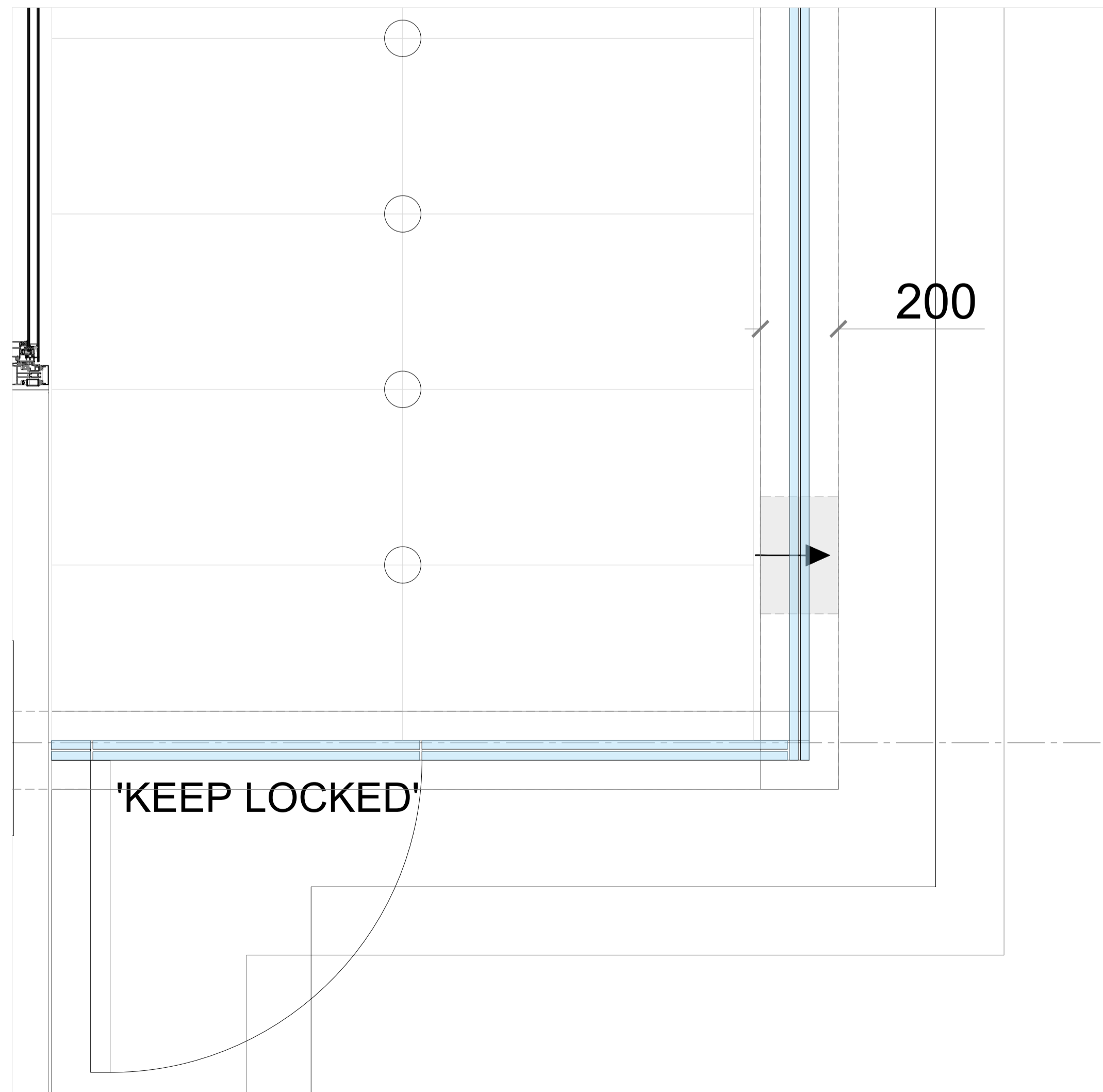
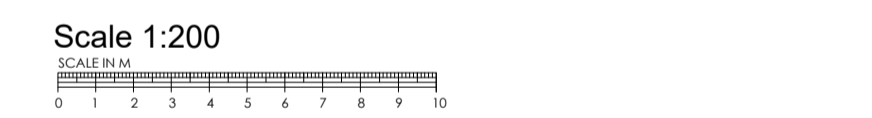
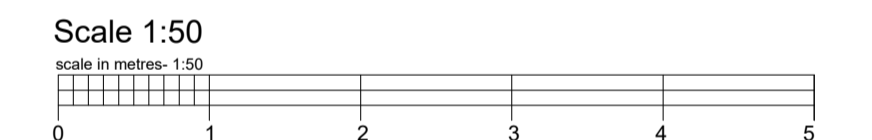
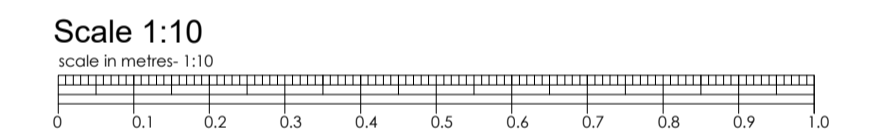
KEY:

- 01 21.5mm glass balustrade 1200mm H FFL. Installed by specialist.
- NB. Balustrade to be designed for a minimum horizontal force of 1.5kN/m.
- Fixings to be designed by manufacturer.
- 02 New reinforced concrete upstand
- 03 Existing wall below parapet- prepare wall (existing deteriorating paint) to receive new external render and paint.

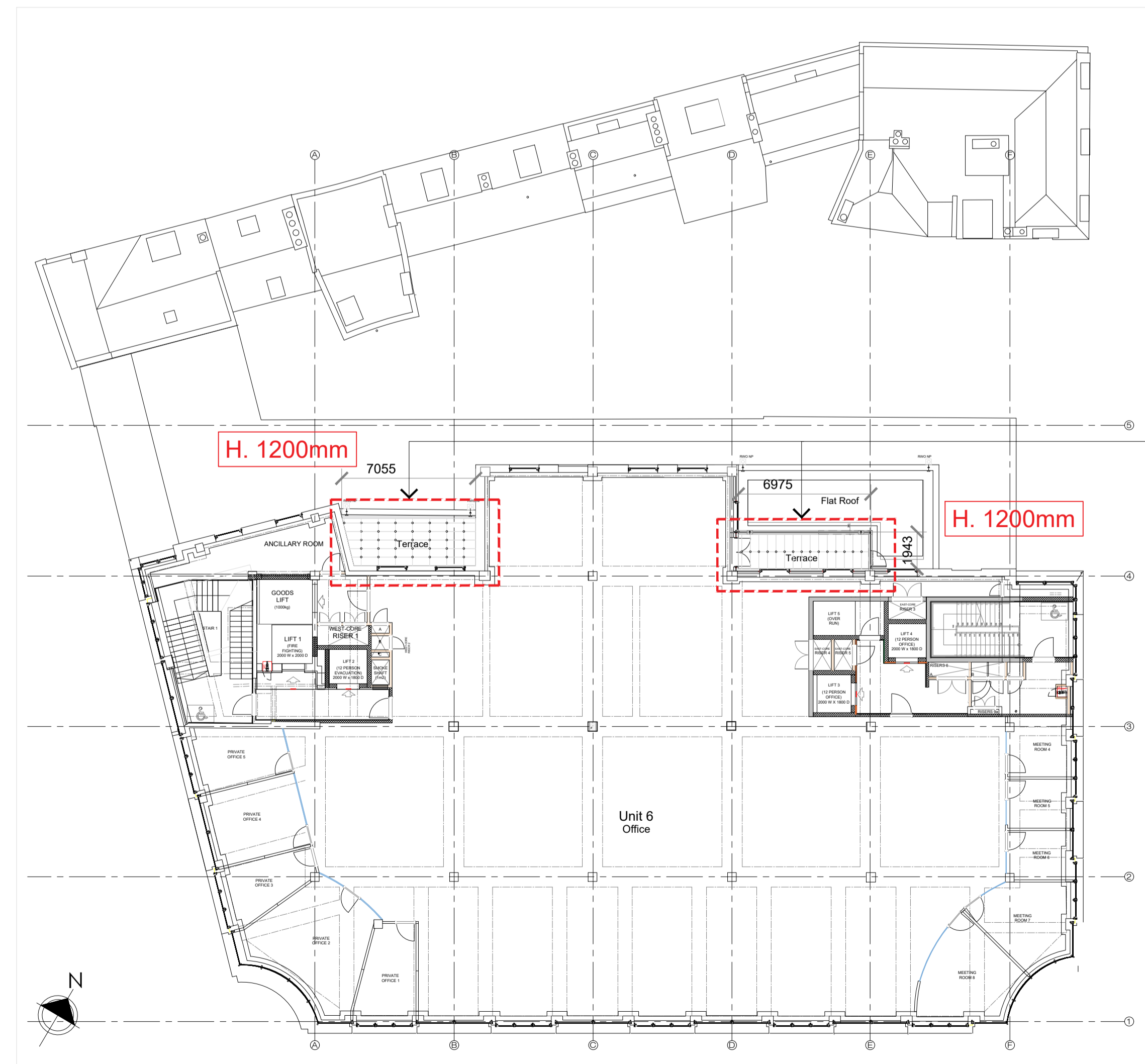
-Note: Loading Requirements 1.5 kN/m



Frameless Glass Balustrade



THIRD FLOOR BALUSTRADE- PLAN  
Scale 1:10



THIRD FLOOR PLAN  
Scale 1:200

Extent of balustrade on Third Floor

- REVISIONS
- 16.09.24 Rev: 06. Minor amendments made to balustrade height.
  - 10.05.24 Rev: 05. General Update made
  - 11.01.24 Rev: 04. Client requested amendments
  - 14.12.23 Rev: 03. Balustrade relocated to top of parapet.
  - 15.08.23 Rev: 02. Concrete plinths flush with single ply membrane/ weathering layer.
  - 27.07.23 Rev: 01. Notes amended base on comments from Structural Engineer.

PLANNING

TITLE  
HOUSE OF FRASER, 75-81 GEORGE STREET, TW9 1HA

CLIENT  
SHEENLANE DEVELOPMENTS LTD

DESCRIPTION  
PROPOSED THIRD FLOOR BALUSTRADE DETAIL

date:	scale:	project:	drawing:	revision:
MAR 23	1:10 1:50 1:200 @ A1	220105	P02-307	06

**SILVERLINE ARCHITECTS**

EMAIL: INFO@SILVERLINEARCHITECTS.COM  
ALL DIMENSIONS TO BE CHECKED ON SITE. ANY DISCREPANCY BETWEEN THIS DRAWING AND OTHER INFORMATION IS TO BE REFERRED TO SILVERLINE ARCHITECTS. THIS DRAWING IS COPYRIGHT.