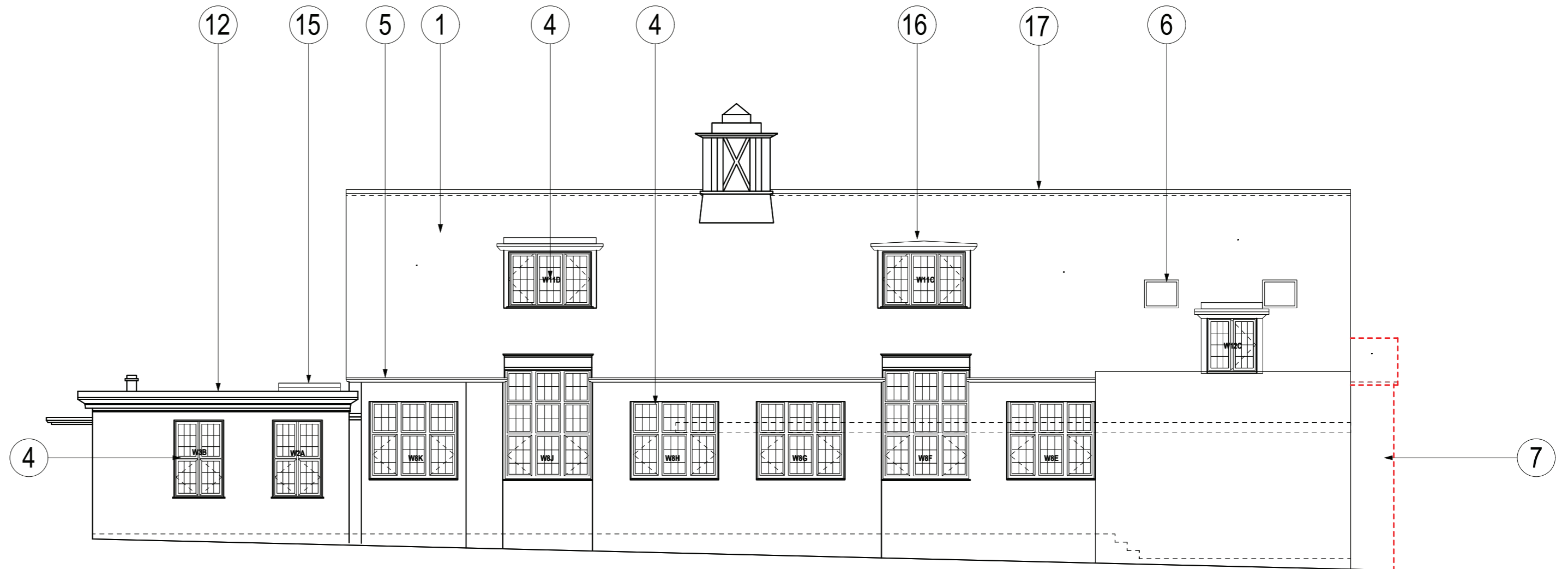
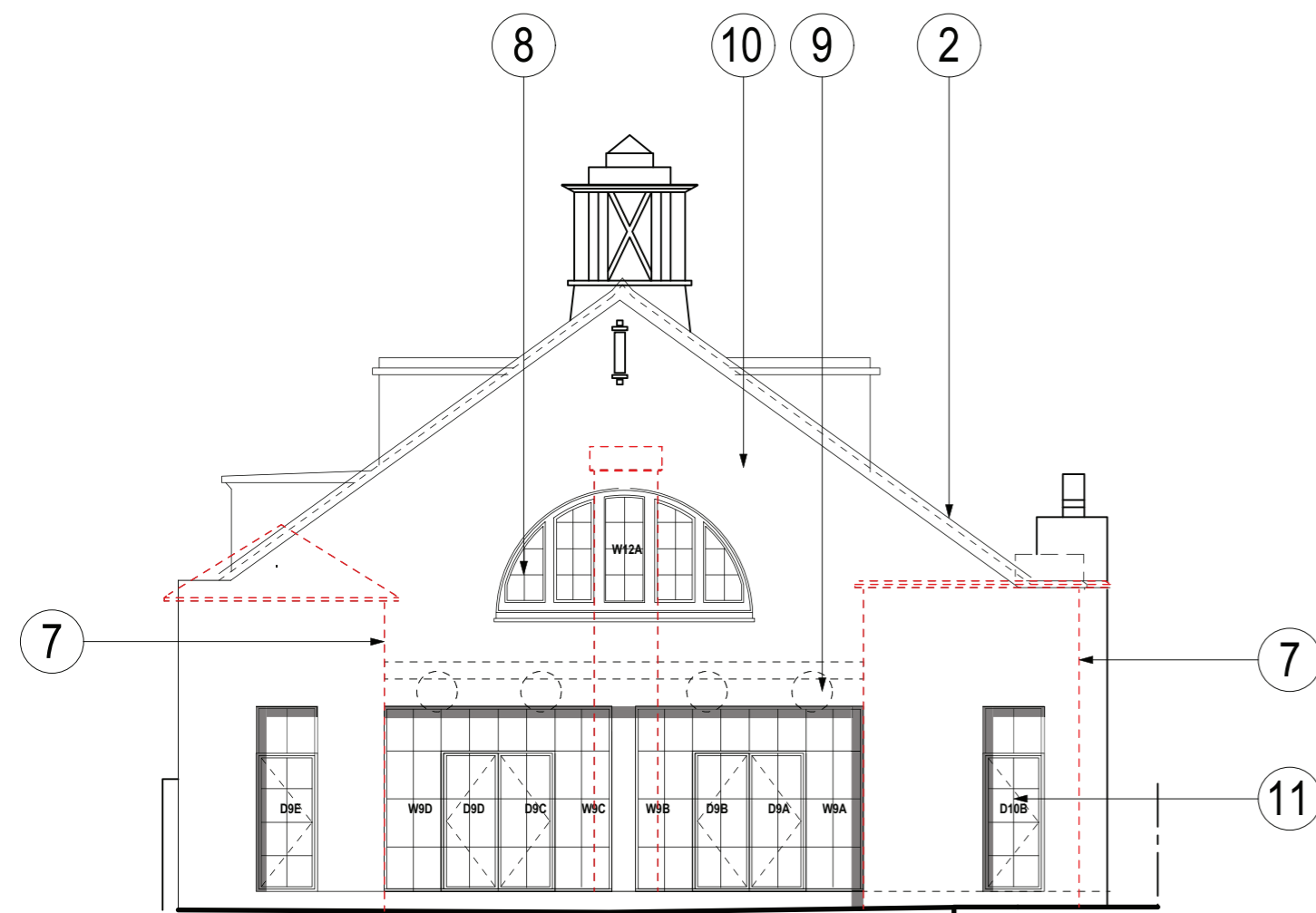


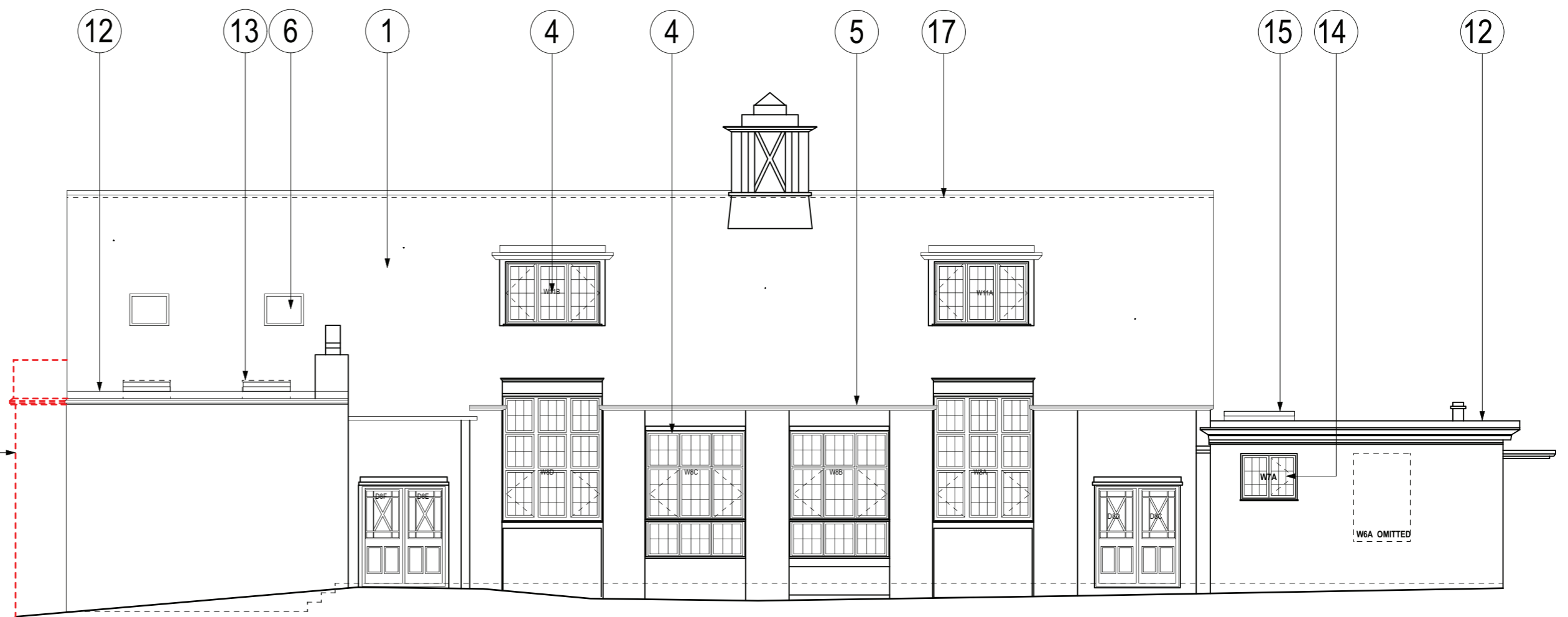
PROPOSED FRONT (SOUTH EAST) ELEVATION



PROPOSED SIDE (SOUTH WEST) ELEVATION



PROPOSED REAR (NORTH EAST) ELEVATION



PROPOSED SIDE (NORTH WEST) ELEVATION

- 1 Marley 'Hawkins Staffordshire Blue' Clay roof tiles- raised to suit new insulation on existing sarking boards
- 2 New matching brick on edge undercloak detail to suit new insulation over sarking (raising tiles 150mm)
- 3 New zinc cladding with welded joints to new widened / insulated cheeks
- 4 New replacement double glazed hardwood windows - dark grey paint finish (replacing UPVC)
- 5 New aluminium rainwater goods - dark grey / black
- 6 New replacement rooflights
- 7 Red dotted line denotes bays to be demolished
- 8 New arched opening with fixed / obscured glass painted hardwood window to conference room
- 9 Back of stage windows blocked up

- 10 New painted render finish to back elevation
- 11 New crittal style aluminium glazing system
- 12 New insulated warm roof system with dark grey EPDM membrane *raised 150mm to suit insulation
- 13 Coxdome rooflights omitted and replaced with new flat rooflights
- 14 Obscure glass to WC windows
- 15 New flat rooflight
- 16 New warm dormer roof
- 17 Ridge raised 150mm to suit new roof insulation