

**Hip to Gable Volume Calculation:**

$9081\text{mm} \times 5490\text{mm} \times 3574\text{mm} / 6 = 29.69 \text{ cubic metres}$

Less existing Dutch hip:

$1900\text{mm} \times 1145\text{mm} \times 795\text{mm} / 6 = 0.288 \text{ cubic metres}$

$26.79 - 0.288 = 29.41 \text{ cubic metres}$

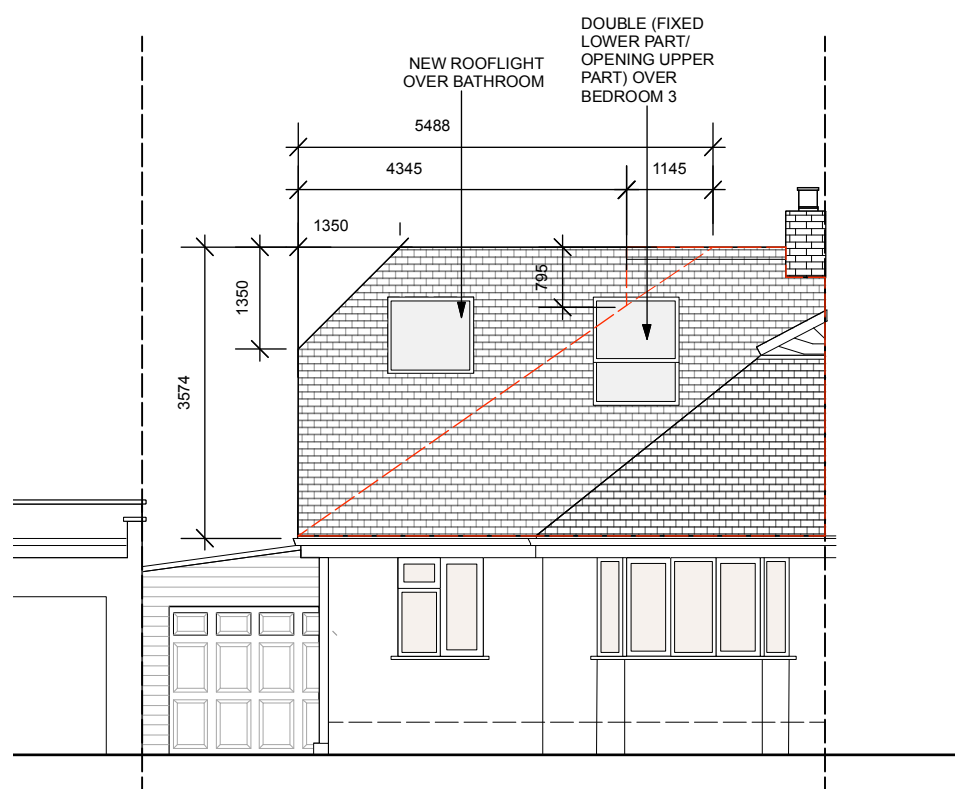
**Dormer Volume Calculation:**

$5790\text{mm} \times 3175\text{mm} \times 2345\text{mm} \times 0.5 = 21.55 \text{ cubic metres}$

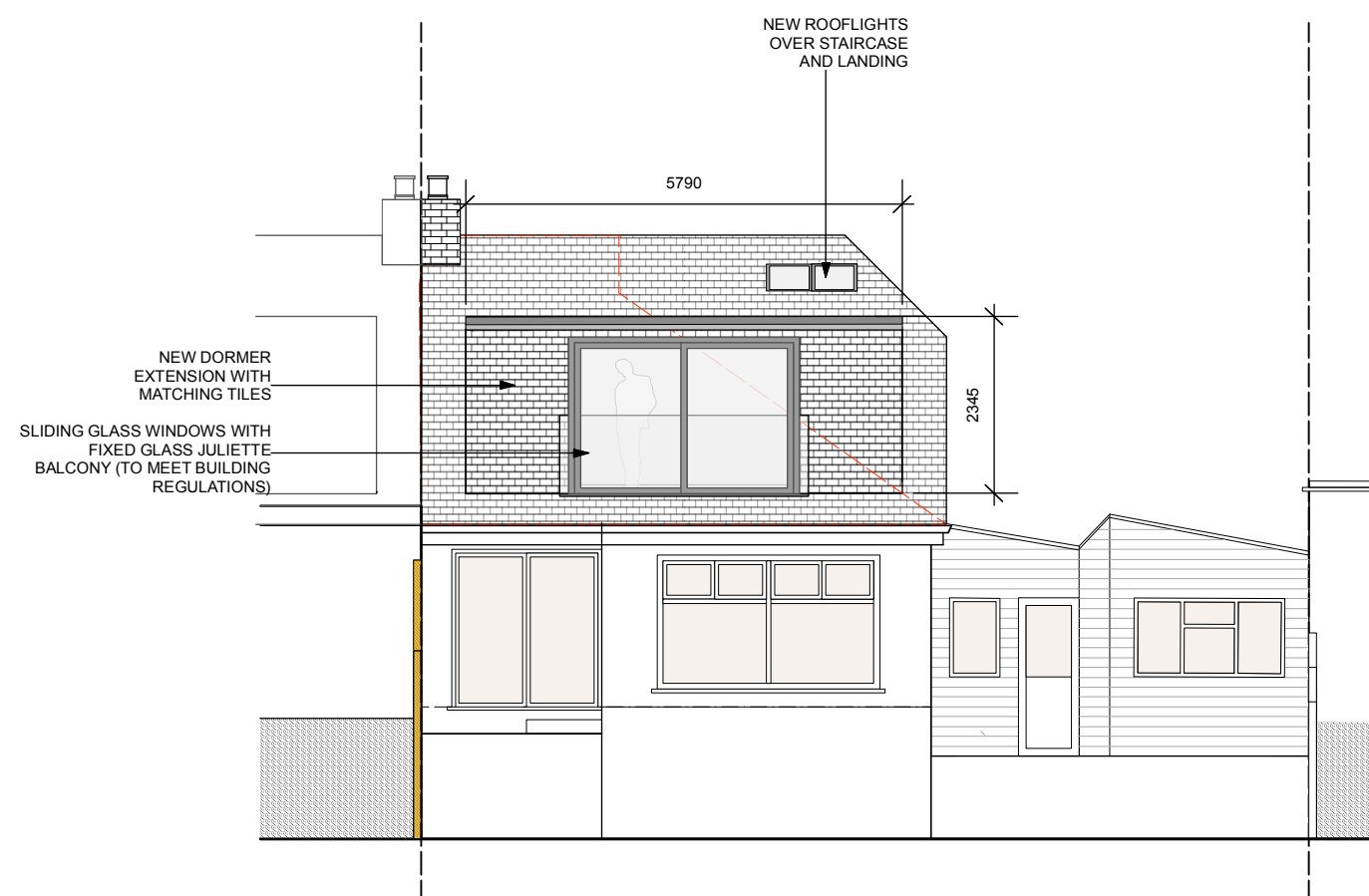
Less new Dutch hip:

$1350\text{mm} \times 1350\text{mm} \times 3540\text{mm} / 6 = 1.08 \text{ cubic metres}$

**Hip to Gable Volume + Dormer Volume = 49.88 cubic metres**



PROPOSED FRONT ELEVATION AA



PROPOSED REAR ELEVATION BB

NOTES :

- REV A - ROOF VOLUME CALCULATIONS AMENDED
- REV B - ROOFLIGHTS TO FRONT ELEVATION AND DORMER WINDOWS AMENDED