

### Light Column Schedule

Number	Status	Comment
LC1	existing retained	
LC2	existing removed	
LC3	existing retained	new LED lamps
LC4	existing retained	new LED lamps
LC5	existing removed	
LC6	existing removed	
LC7	existing retained	new LED lamps
LC8	existing retained	new LED lamps
LC9	existing retained	new LED lamps
LC10	existing retained	new LED lamps
LC11	existing removed	
LC12	existing removed	
LC13	proposed	new column (LED)
LC14	proposed	new column (LED)
LC15	proposed	new column (LED)
LC16	proposed	new column (LED)
LC17	proposed	integral with court (LED)
LC18	proposed	integral with court (LED)
LC19	proposed	integral with court (LED)
LC20	proposed	integral with court (LED)
LC21	proposed	integral with court (LED)
LC22	proposed	integral with court (LED)
LC23	proposed	integral with court (LED)
LC24	proposed	integral with court (LED)

### KEY:

#### Proposed Surfaces

- Existing tarmac
- Existing paving
- Existing tarmac leveled with new acrylic porous surface over
- Existing acrylic porous surface repainted to match the surrounding
- Existing acrylic porous surface light green colour
- Proposed tennis court painted markings over new acrylic porous surface
- Proposed shared junior mini red tennis court / pickleball tennis court painted markings over new acrylic porous surface
- Proposed padel tennis courts with new artificial grass play surface

#### Proposed Boundaries and Fencing

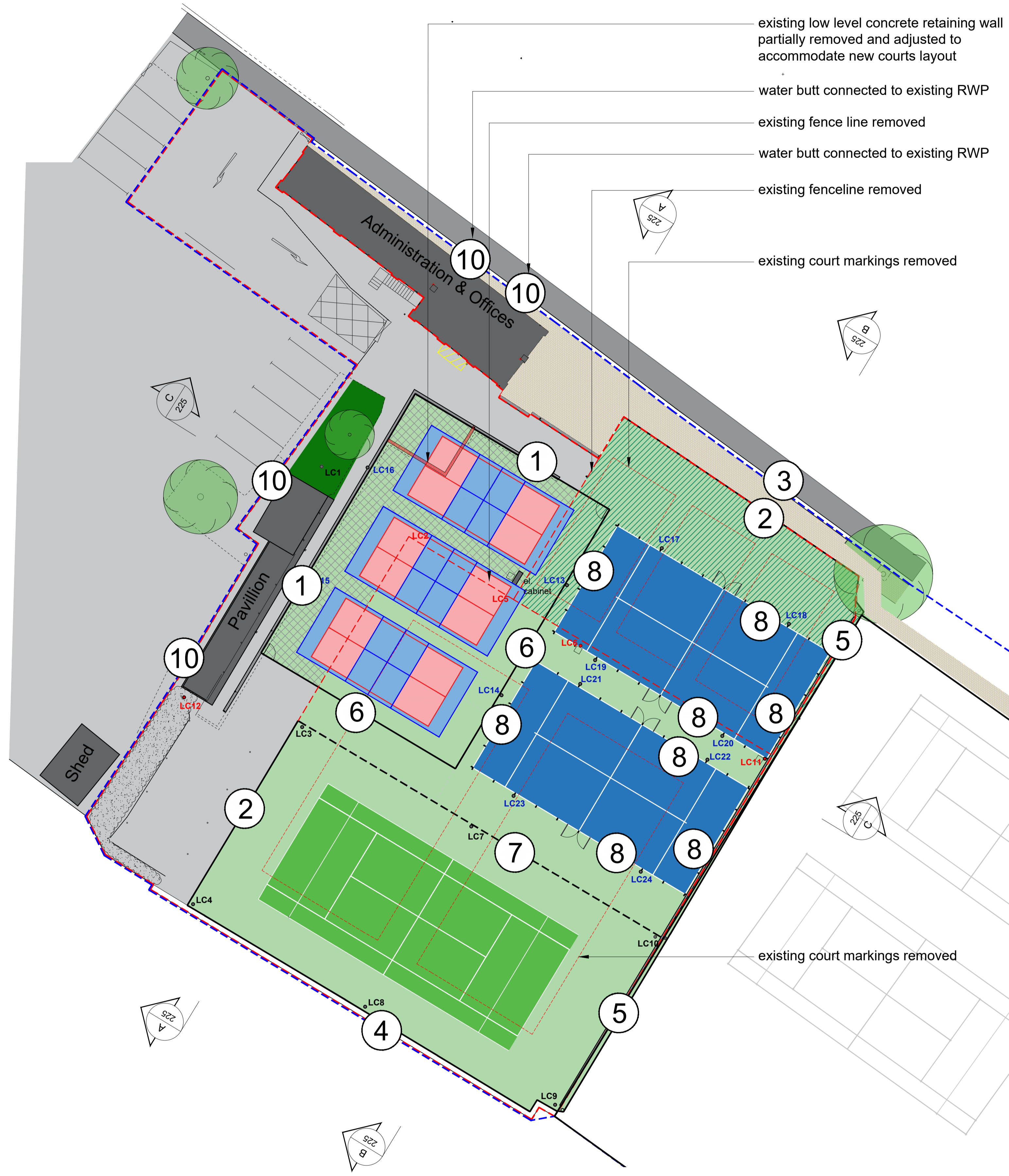
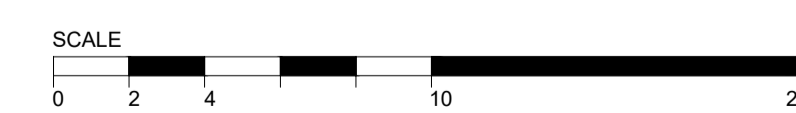
1. Low level concrete retaining wall
2. Chain link fencing (2.6m high)
3. Chain link fencing (2.6m high) with low level timber boarding to the front
4. Chain link fencing (2.6m high) with metal pallisade fencing (2m high) to the front
5. Chain link fencing (2.6m high) over low level concrete retaining wall (0.4m high)
6. Proposed low level (1.1m high) chain link fencing around mini red junior /pickleball tennis courts perimeter
7. Proposed removable netting (1.8m high)
8. Proposed Padel Tennis Court enclosure; Both ends of the Padel Tennis Courts and first 4 metres of each end of the side walls in toughened glass 2m wide x 3m high panels. The end walls and the first 2 metres of each end of the side walls to have 1 metre high mesh panels over glazing. The remainder of the side walls, including gates, to be in wire mesh 3m high panels. All metalwork galvanized and powder coated black.

9. Proposed additional 2no Sheffield type bike stands adjacent to existing
10. Recycled plastic 200l water butt (green) connected to existing drain pipe

LC - Metal lighting column

--- Site boundary

--- Ownership boundary



existing low level concrete retaining wall partially removed and adjusted to accommodate new courts layout

water butt connected to existing RWP

existing fence line removed

water butt connected to existing RWP

existing fenceline removed

existing court markings removed

existing court markings removed

