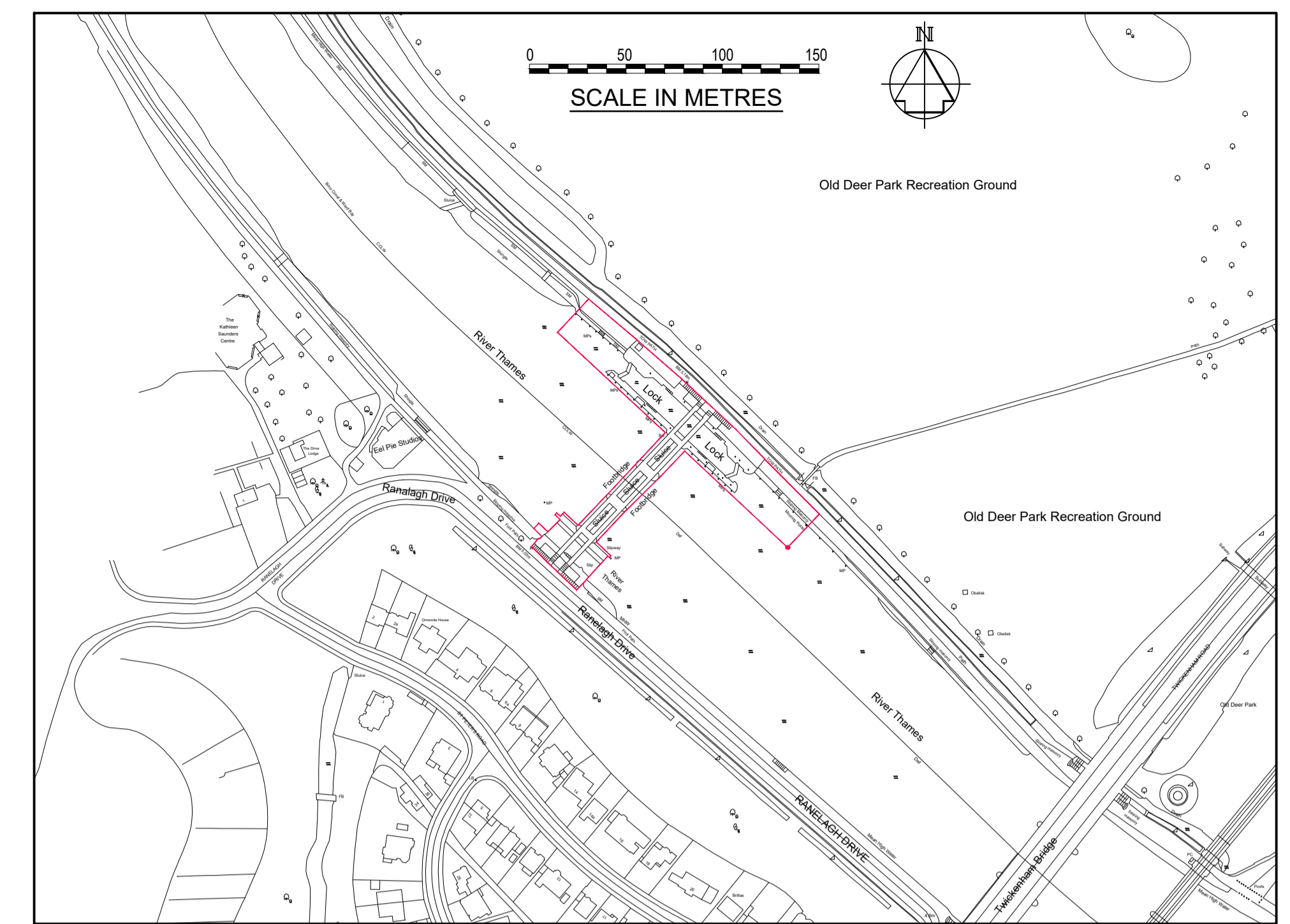


SITE PLAN (1:250)



KEY PLAN (1:2500)

LEGEND

- 4 & 8 STATIC CAMERA - MINI DOME
- 2,3,5 STATIC CAMERA - BULLET
- 6,7,9 STATIC CAMERA - BULLET
- 11-15 STATIC CAMERA - BULLET
- 1,16 & 17 PTZ CAMERA
- 10 MULTI SENSOR CAMERA 180°
- ⊠ NETWORK HUB

NOTE

FOR EXACT POSITIONING AND DETAILS OF CAMERA TYPES REFER TO SUPPLEMENTARY DOCUMENTATION.

Rev	Description	By	Date
CIVIL ENGINEERING DEPARTMENT London River House Royal Pier Road Gravesend Kent DA12 2BG Telephone 01474 562250 Facsimile 01474 562277 E-Mail: CivEng@pla.co.uk Web site: www.pla.co.uk			
Location RICHMOND LOCK AND WIER RICHMOND SURREY			
Drawing Title PLANNING APPLICATION FOR PROPOSED SECURITY CAMERA UPGRADE			
Date	Scale (@A1)	Drawn	Engineer
6/09/24	1:2500, 1:250	RAC	E. FISK
Drawing Number			Rev.
RLW/C/1053			