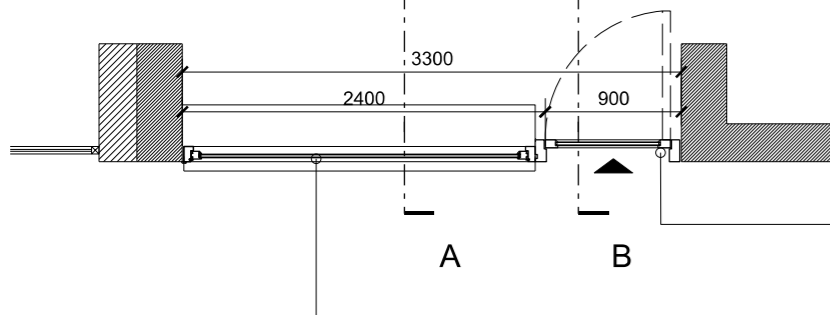




01 FRONT ELEVATION - PROPOSED
301 SCALE 1:50



04 FLOOR PLAN - PROPOSED
301 SCALE 1:50

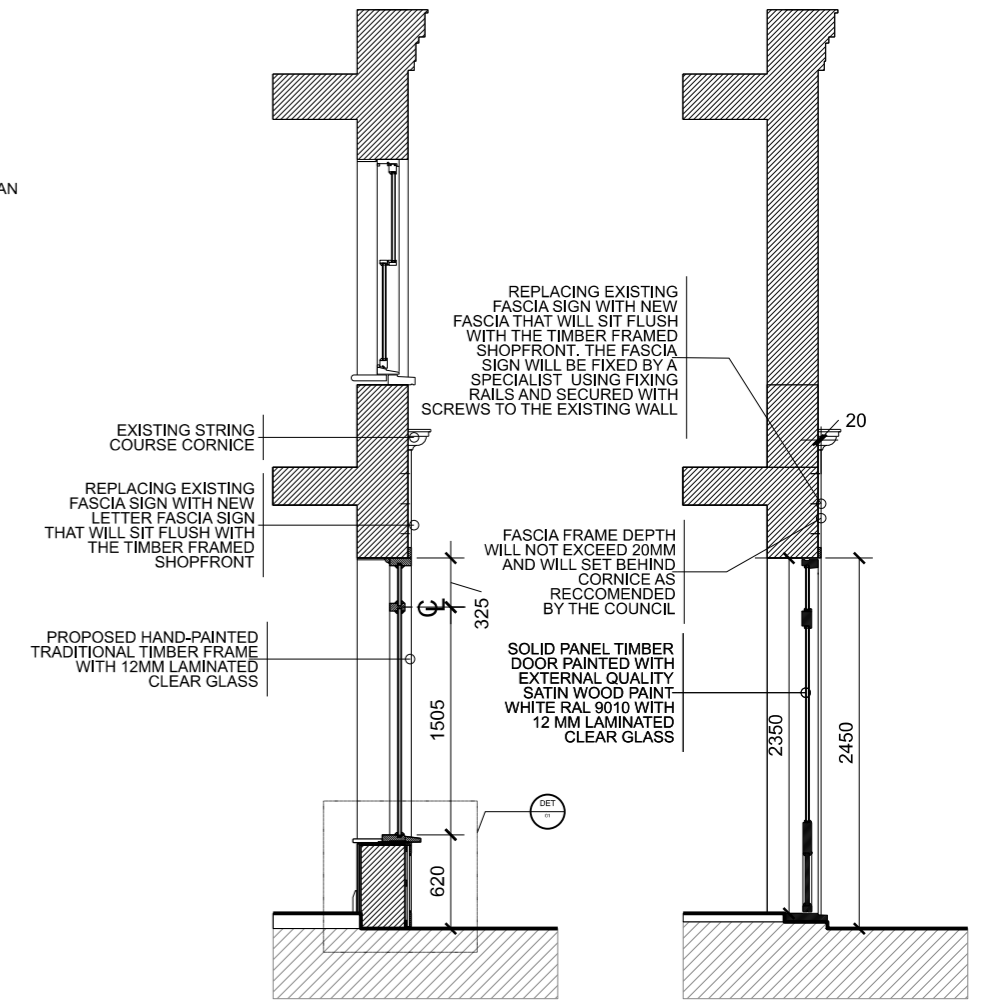
THE EXISTING FASCIA SIGN WILL BE REPLACED WITH A NEW ILLUMINATED PROJECTION LETTER FASCIA SIGN. THE TIMBER PANEL SIGN MEASURING 3310MM X 435MM X 20MM DEEP, WITH AN ADDITIONAL 25MM UPSTAND (460MM OVERALL HEIGHT). IT WILL BE POWDER COATED TO A RAL COLOUR AND SUPPLIED WITH TOP AND BOTTOM FIXING RAILS. THE SIGN FACE WILL FEATURE A BUILT UP 0.9MM FLAT FACED DESCALED S/S DETAIL POWDER COATED TO A STANDARD RAL COLOUR 175MM HIGH (ON THE 'S') X 30MM DEEP. FITTED WITH DIFFUSER POLYCARB BACKTRAYS AND INTERNALLY ILLUMINATED WITH COOL WHITE LEDS FOR HALO EFFECT ILLUMINATION, SUPPLIED WITH SPACERS & SCREWS TO SUIT. THE INTERNALLY-ILLUMINATED FASCIA LETTERING IS ESSENTIAL FOR ALIGNING WITH THE NATURE OF THE BUSINESS AND THE DESIGN OF THE BUSINESS MODEL.

THE FASCIA FRAME WILL BE ADJUSTED TO FIT WITHIN A STANDARD-SIZED MOULDED FRAME, MAKING IT CONSISTENT WITH ITS NEIGHBOURING BUILDINGS. NEW 175MM HIGH INDIVIDUAL, ILLUMINATED LETTERS PINNED OFF THE FASCIA SIGN

THE SIGN LIGHTING WILL BE VERY MINIMAL AND WILL FOLLOW THE COUNCILS RECOMMENDATIONS. TO ENSURE OPTIMAL VISIBILITY, THE SIGN WILL BE INTERNALLY ILLUMINATED USING COOL WHITE LEDS, CREATING A HALO EFFECT. IT WILL BE FITTED WITH A DIFFUSER POLYCARBONATE BACKTRAYS AND SUPPLIED WITH APPROPRIATE SPACERS AND SCREWS FOR INSTALLATION. THE WHITE-SPECTRUM COLOR TEMPERATURE WILL BE NO MORE THAN 2700K (WARM WHITE) AND THE BRIGHTNESS WILL NOT EXCEED 200cd/m². THE LED STRIP LIGHT SHALL BE DIFFUSED, ORIENTED, AND SHIELDED TO PROTECT THE HUMAN EYE FROM DIRECT LIGHT WHEN VIEWED FROM THE STREET. USING MATERIALS LIKE OPAL ACRYLIC. ADDITIONALLY, THE STRIP LIGHT WILL BE PAINTED WHITE TO MATCH THE SHOPFRONT COLOR.

PROPOSED WHITE PAINTED TIMBER FRAME DOOR WITH 12 MM LAMINATED CLEAR GLASS. THE POST LETTER BOX WILL BE RETAINED ON THE ENTRANCE DOOR WITHIN THE WHITE PAINTED TIMBER FRAME.
NOTE: THE ADJACENT STREET FRONT DOOR WILL REMAIN IN ITS TRADITIONAL SHAPE AND WILL BE MAINTAINED IN THE SAME STYLE TO FIT WITH THE BUILDING

THE SHOP FRAME WILL BE HAND-PAINTED TRADITIONAL BOLECTION MOULDED TIMBER FRAME PAINTED IN WHITE WITH PANELLED STALLRISER AND CILL AND PLINTH TO MATCH THE EXISTING WHILE RETAINING THE EXISTING CHARACTER AND APPEARANCE OF THE SHOP.

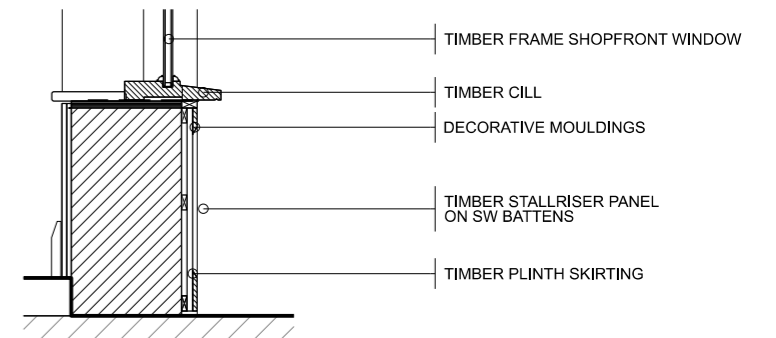


02 SECTION AA - PROPOSED
301 SCALE 1:50

03 SECTION BB - PROPOSED
301 SCALE 1:50

SOLID PANEL TIMBER DOOR PAINTED WITH EXTERNAL QUALITY SATIN WOOD PAINT WHITE RAL 9010 WITH 12 MM LAMINATED CLEAR GLASS

THE SHOP FRAME WILL BE HAND-PAINTED TRADITIONAL BOLECTION MOULDED TIMBER FRAME PAINTED IN WHITE WITH PANELLED STALLRISER WITH A CILL AND PLINTH SKIRT.



052 DETAIL 01 - PROPOSED
301 SCALE 1:20

NOTES

Do not scale from this drawing. Use marked dimensions only. Should any discrepancies be noted, please inform immediately.

P03 Issued for Information	19/09/24 JM
P02 Issued for Information	25/07/24 JM
P01 Issued for Information	22/07/24 JM
Rev: Description	Date: Drw: Chk:

the boathouse design studio
27 ferry road teddington tw11 9nn

joshua@mas-architect.com

Client: Mr. Ozhan Duyan			
Project Name: Serpil Aesthetics Skin Clinic, 97 High Street, Teddington, London, TW11 8HG			
Drawing Title: Proposed Shop Front Drawings			
Drawing Status: Planning	Status Code: P03	Project No: ZDD01	Scale at A1: 1:50
Drawing No: ZDD01-301	Revision: P03	Date: SEP 24	Scale at A3: 1:100