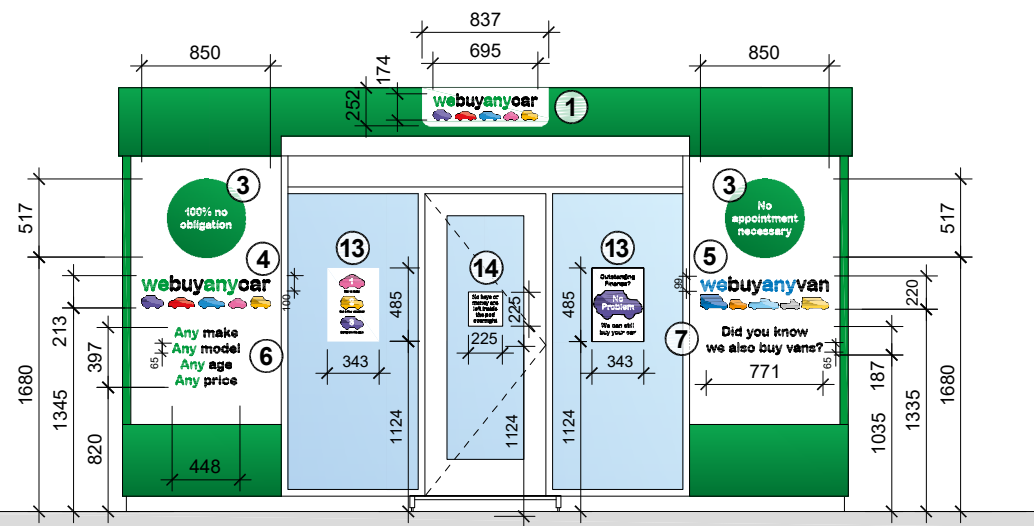
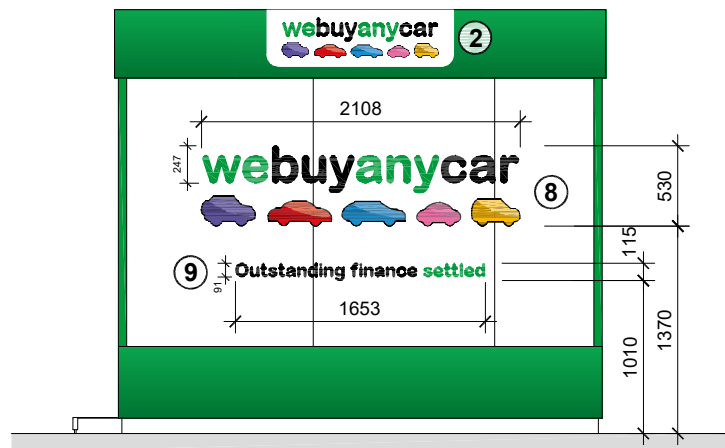


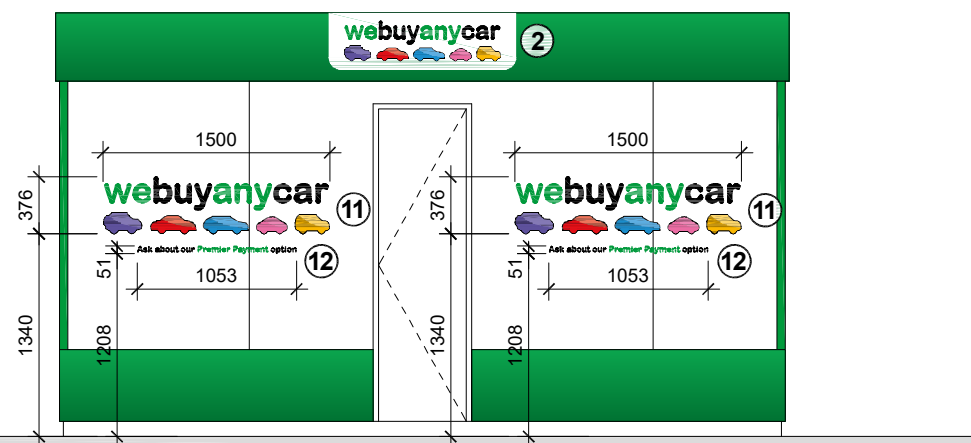
PLAN



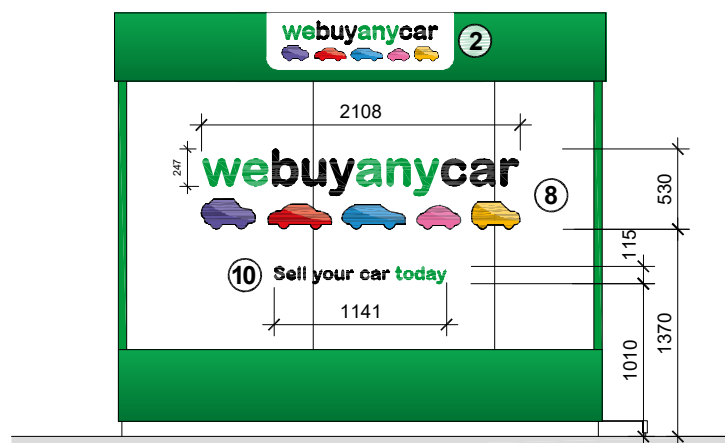
ELEVATION A



ELEVATION B



ELEVATION C



ELEVATION D

NOTES:

PROPOSED AREAS	sq ft	sq m
Gross Internal Area	150 sq ft	14 sq m
Gross External Area	165 sq ft	15 sq m



All signage to be vinyl graphics applied to pod.  
Printed vinyl, non reflective and non illuminated.

Colours to be:  
Text - Black, white and green  
Images - Purple, red, blue, pink, orange & yellow

Sign 1 - WBAC logo on white box(1 no.)  
Logo size: 695 x 174mm.  
White box: 837 x 252mm

Sign 2 - WBAC logo on white box(3 no.)  
Logo size: 1038 x 260mm.  
White box: 1240 x 373mm

Sign 3 - Circle graphics (2 no.)  
Size: 517mm diameter

Sign 4 - WBAC logo  
Size: 850 x 213mm

Sign 5 - WBAV logo  
Size: 850 x 220mm

Sign 6 - 'Any' slogan  
Size: 448 x 397mm

Sign 7 - 'Did you know' text  
Size: 771 x 187mm

Sign 8 - WBAC logo (2 no.)  
Size: 2108 x 530mm

Sign 9 - Strap line text  
Size: 1653 x 115mm

Sign 10 - Strap line text  
Size: 1141 x 115mm

Sign 11 - WBAC logo (2 no.)  
Size: 1500 x 376mm

Sign 12 - Strap line text (2 no.)  
Size: 1053 x 51mm

Sign 13 - Vinyl poster (2 no.)  
Size: 485 x 343mm

Sign 14 - Vinyl poster  
Size: 225 x 225mm

REVISION 1 BY: RHM CHECKED: DATE: 29/08/2024  
Initial issue

STATUS  
**A3 | PLANNING**

CLIENT

**Sainsbury's**

PROJECT  
**WBAC POD CONCESSIONS**

TITLE  
**'WE BUY ANY CAR' POD  
TYPE A  
PROPOSED SIGNAGE**

**Hadfield Cawkwell Davidson**  
Broomgrove Lodge, 13 Broomgrove Rd, Sheffield, S10 2LZ T 0114 266 8181 www.hcd.co.uk

HCD PROJECT NO. 24022 SCALE 1:50 @ A3 REV. 1

ASSET\_ID\_PROGRAMME CODE ORIGINATOR DIVISION LEVEL TYPE-ROLE-NUMBER  
**AS-XXXX\_1847 | HCD | Z05 | ZZ | SK-A-9020**