

Design & Access Statement

David Lloyd Hampton  
Padel Courts

*David Lloyd*  
— CLUBS —



## CONTENTS

1.	INTRODUCTION .....	4
2.	SITE AND SURROUNDING CONTEXT .....	5
3.	PADEL COURTS .....	9
4.	DESIGN PROPOSAL .....	10
5.	ACCESS .....	11

## ILLUSTRATIONS

FIG. 1	SITE LOCATION .....	4
FIG. 2	EXISTING TENNIS COURTS ON PROPOSED SITE .....	5
FIG. 3	EXISTING SITE PLAN.....	6
FIG. 4	PROPOSED SITE PLAN .....	7
FIG. 5	AERIAL VIEW .....	8
FIG. 6	PADEL COURT PLAN & ELEVATIONS.....	9
FIG. 7	PADEL COURT PLAN & ELEVATIONS WITH CANOPY.....	9
FIG. 8	TYPICAL PADEL COURT 3D RENDER.....	10
FIG. 9	TYPICAL PADEL COURT IMAGE.....	10
FIG. 10	TYPICAL PADEL COURT CANOPY IMAGES.....	11







Fig. 1 Site Location





## 1. Introduction

This Design and Access Statement has been prepared by Hadfield Cawkwell Davidson to accompany the full planning application for the provision of new Padel Courts on the site of existing tennis courts at David Lloyd Hampton.

### Application Overview

This document is to be read in conjunction with the application drawings, scheduled below:

- A-PL-001 Location Plan
- A-PL-002 Existing Site Plan
- A-PL-003 Proposed Site Plan
- A-PL-010 Padel Court Plan & Elevations
- A-PL-011 Padel Court Plan & Elevations with Canopy



**Fig. 2** Existing Tennis Courts On Proposed Site

## 2. Site & Surrounding Context

### 2.1 Location

The existing David Lloyd Leisure Club is located in Twickenham, a suburban area to the north of Hampton.

### 2.2 Access

David Lloyd Hampton is well connected to existing infrastructure. Vehicle access is off Twickenham Road via the existing car park access.

Bus services from Hampton centre are regular with the closest stops at an estimated 3 minute walk from the club, ensuring the leisure centre is accessible to all the local community.

### 2.3 Existing building and site

The existing David Lloyd leisure club sits to the east of the site. The building's principal frontage faces east onto a dedicated car park which extends north, east and south of the building. The existing tennis courts are located to the south east of the building and to the north and east of the site is the dedicated car park.

The proposed site for the additional facilities are located to the south of the existing building on 3 existing tennis courts.

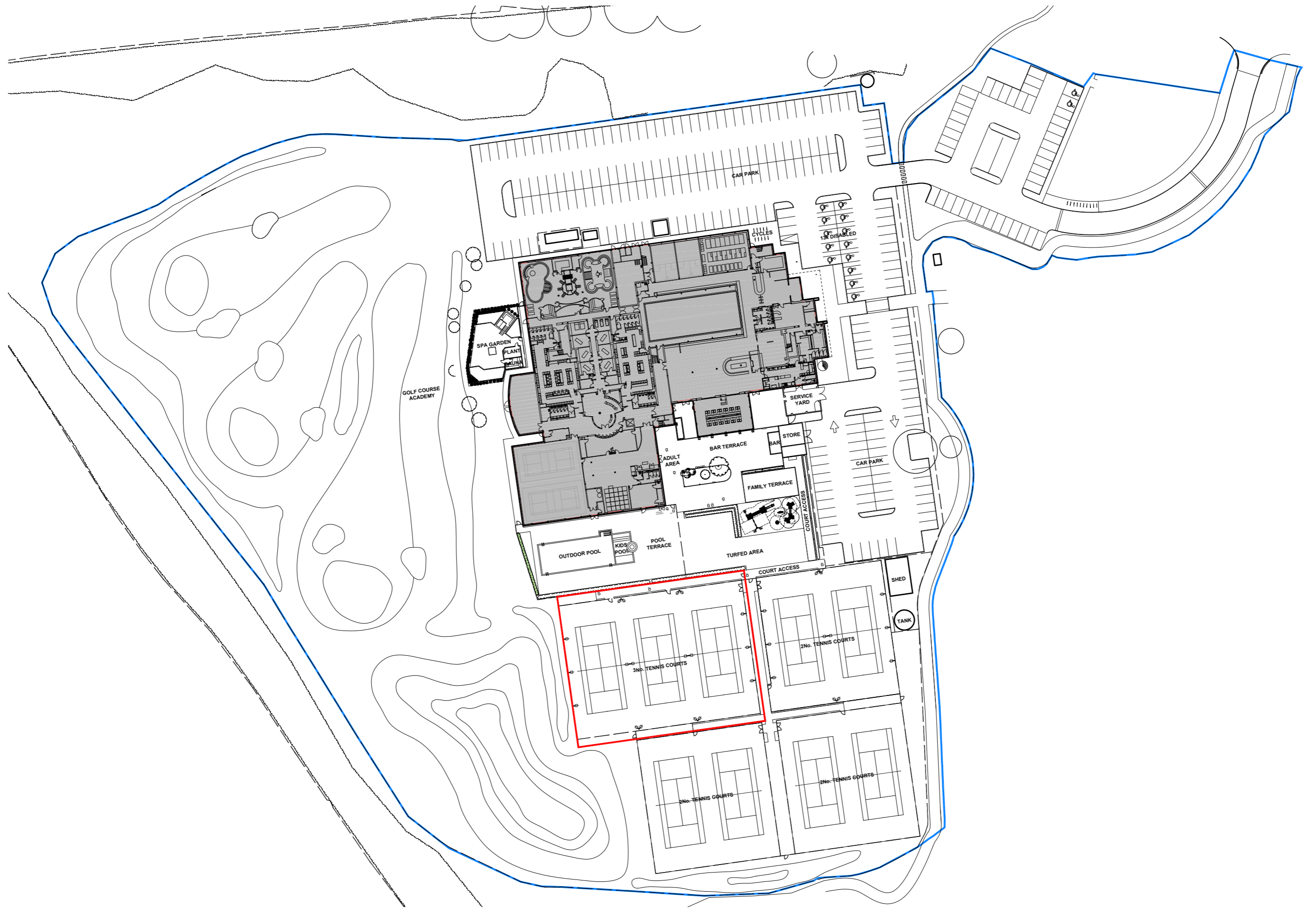
### 2.4 Surrounding context

The club is bounded on the north by hedgerow, mature trees and Twickenham Road which provides access to the site. To the north the club borders a residential area. To the east and south, the site is bounded by Fulwell Golf Club and greenspace from Hampton Heath park.

To the west, there is some greenspace and Hampton Road East which extends to the south of the site.

### 2.5 Existing landscaping and Ecology

The site is surrounded by perimeter landscaping to north and east including mature trees and vegetation. The existing club is hidden from view from Twickenham Road by mature trees, hedgerow and low rise buildings. The car park contains rows of trees and planting. The topography of the site and surrounding landform is generally flat.



**Fig. 3** Existing Site Plan





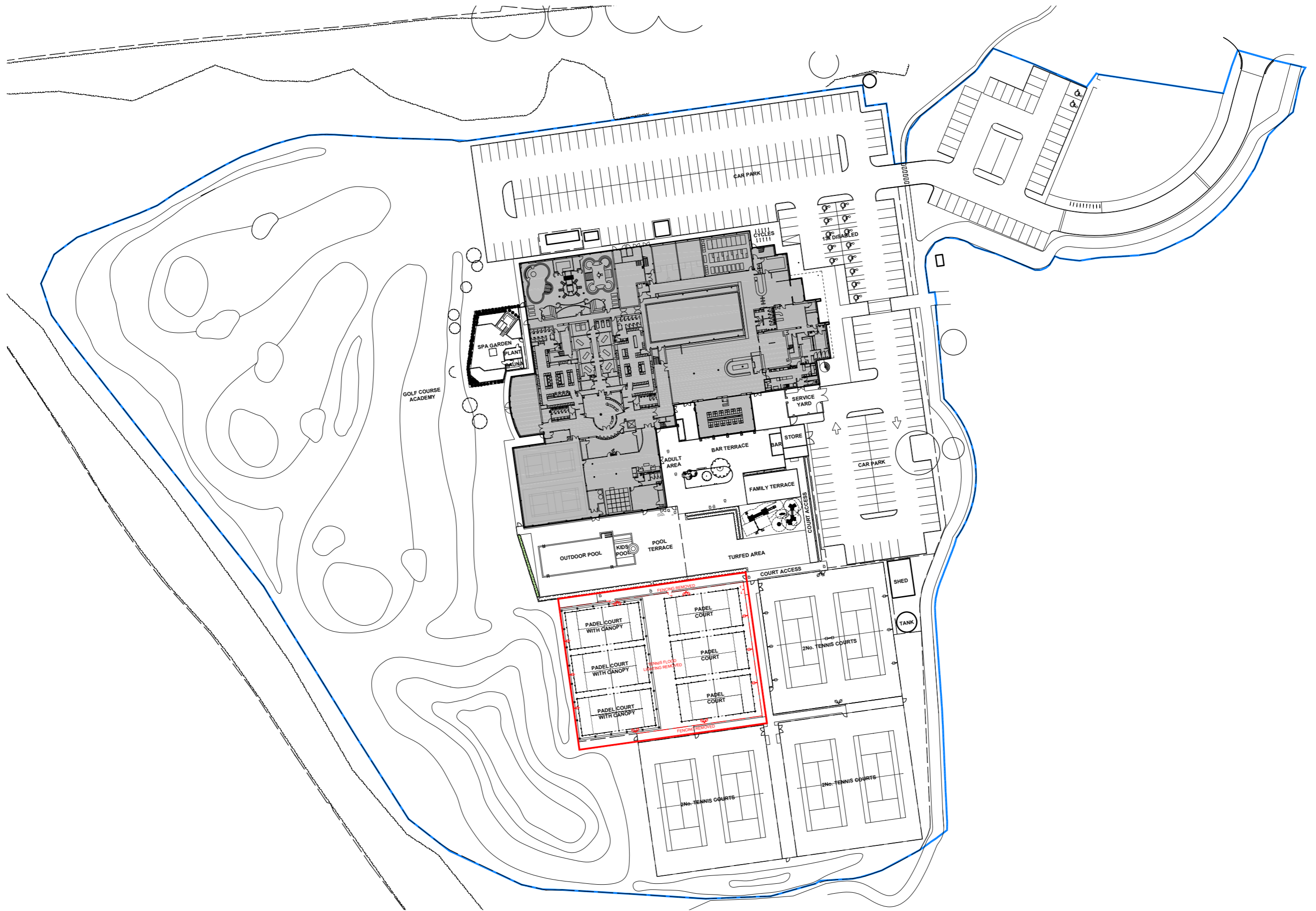


Fig. 4 Proposed Site Plan










- KEY:**
-  BUILDING ENTRANCE
  -  SITE OF PROPOSED PADEL COURTS
  -  SITE ACCESS

Fig. 5 Aerial View

©GOOGLE



### 3. Padel Courts

Padel tennis is a form of tennis that is easy to play, fun and extremely sociable. It is played mainly in a doubles format on an enclosed court about a third of the size of a tennis court and can be played in groups of mixed ages and abilities, as it is not power dominant. The rules are broadly the same as tennis, although you serve underhand and the Perspex walls are used as part of the game with the ball allowed to bounce off them.

Padel is one of the fastest growing sports across continental Europe, with over six million people currently playing in Spain alone. As of November 2020 there are around 6,000 active padel players across Britain. There are also currently 107 padel courts at 52 clubs – a number that is set to grow substantially over the coming years.

David Lloyd are at the forefront of this tennis revolution in the UK and are now proposing all of their new clubs to be provided with premium Padel facilities.

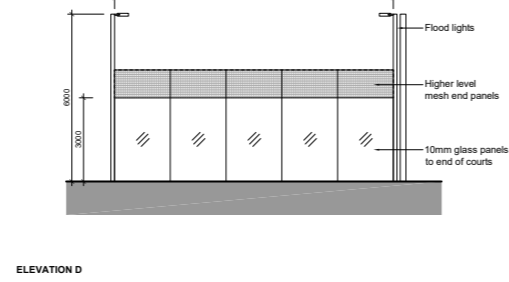
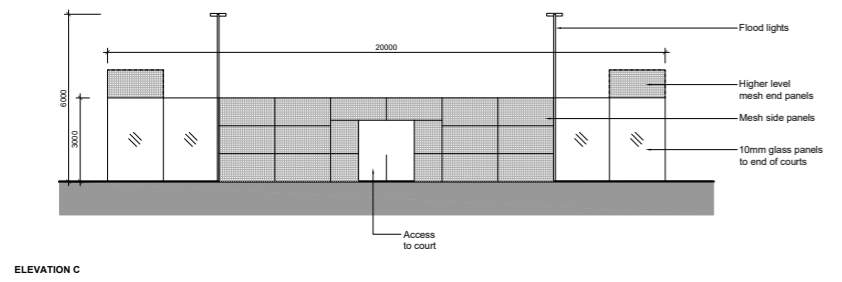
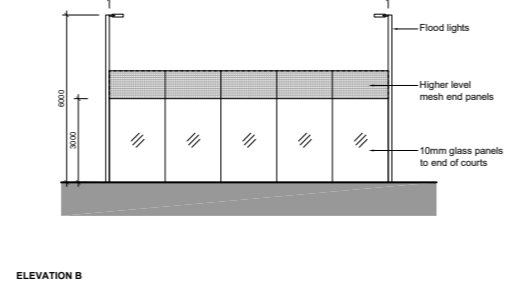
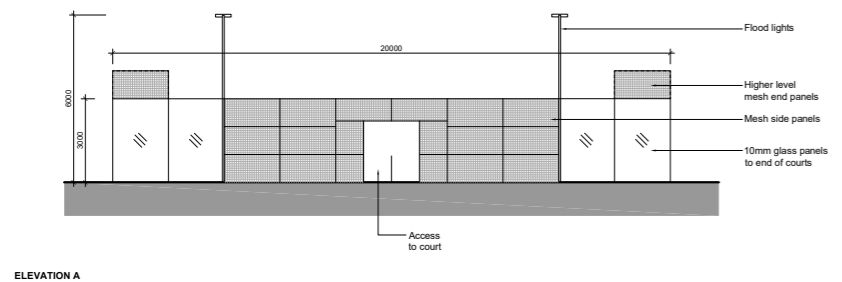
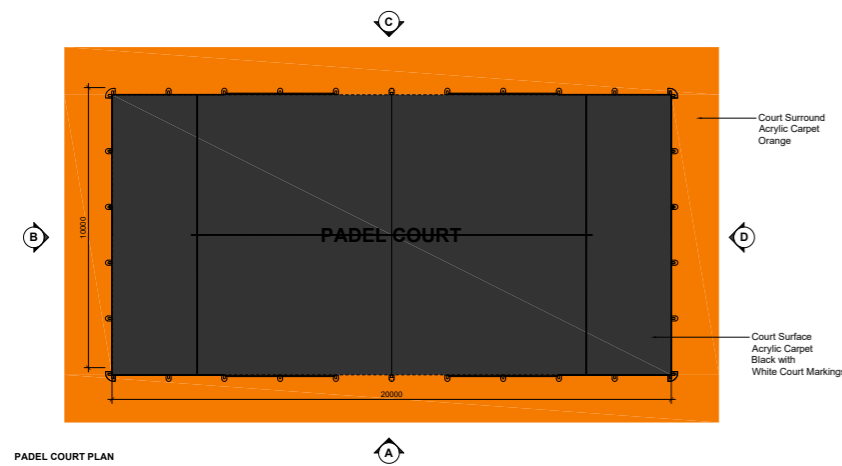


Fig. 6 Padel Court Plan & Elevations

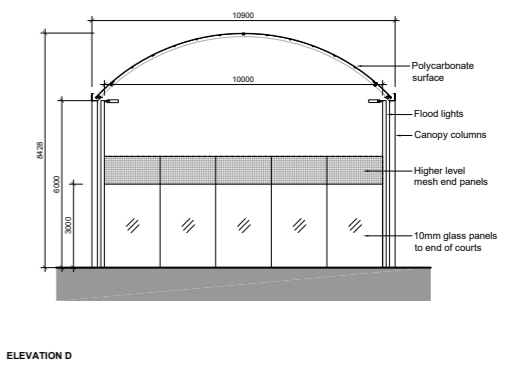
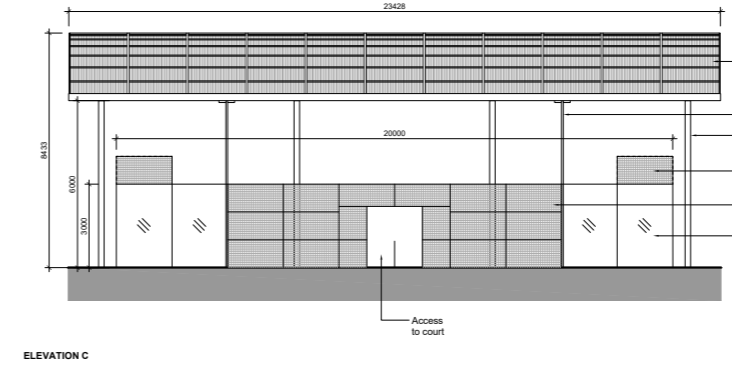
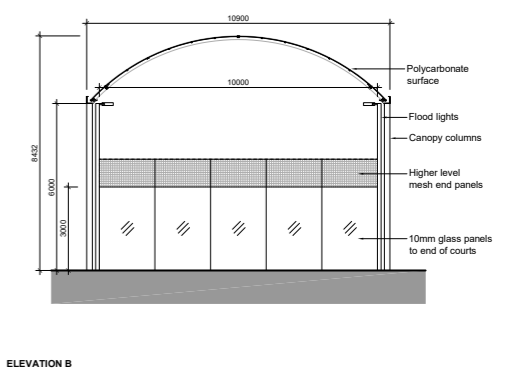
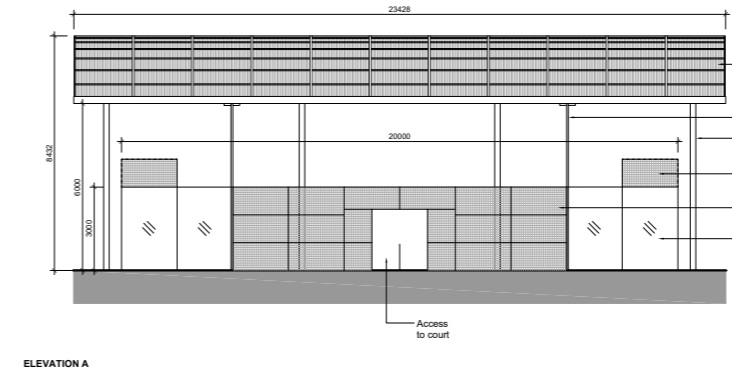
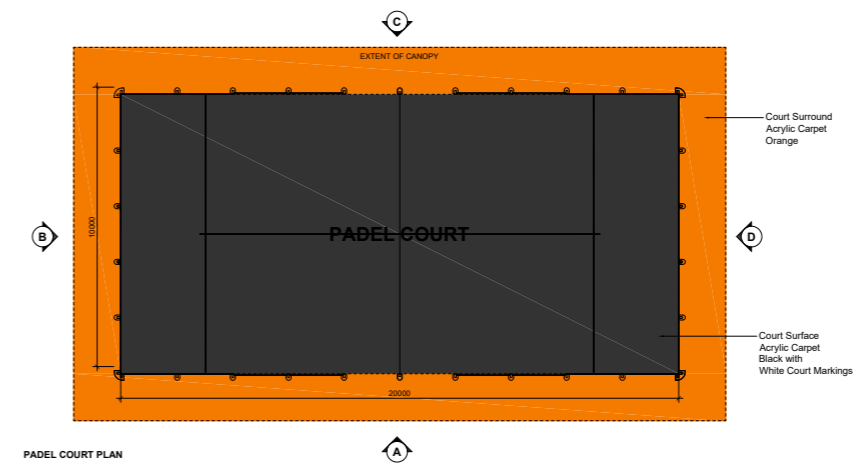
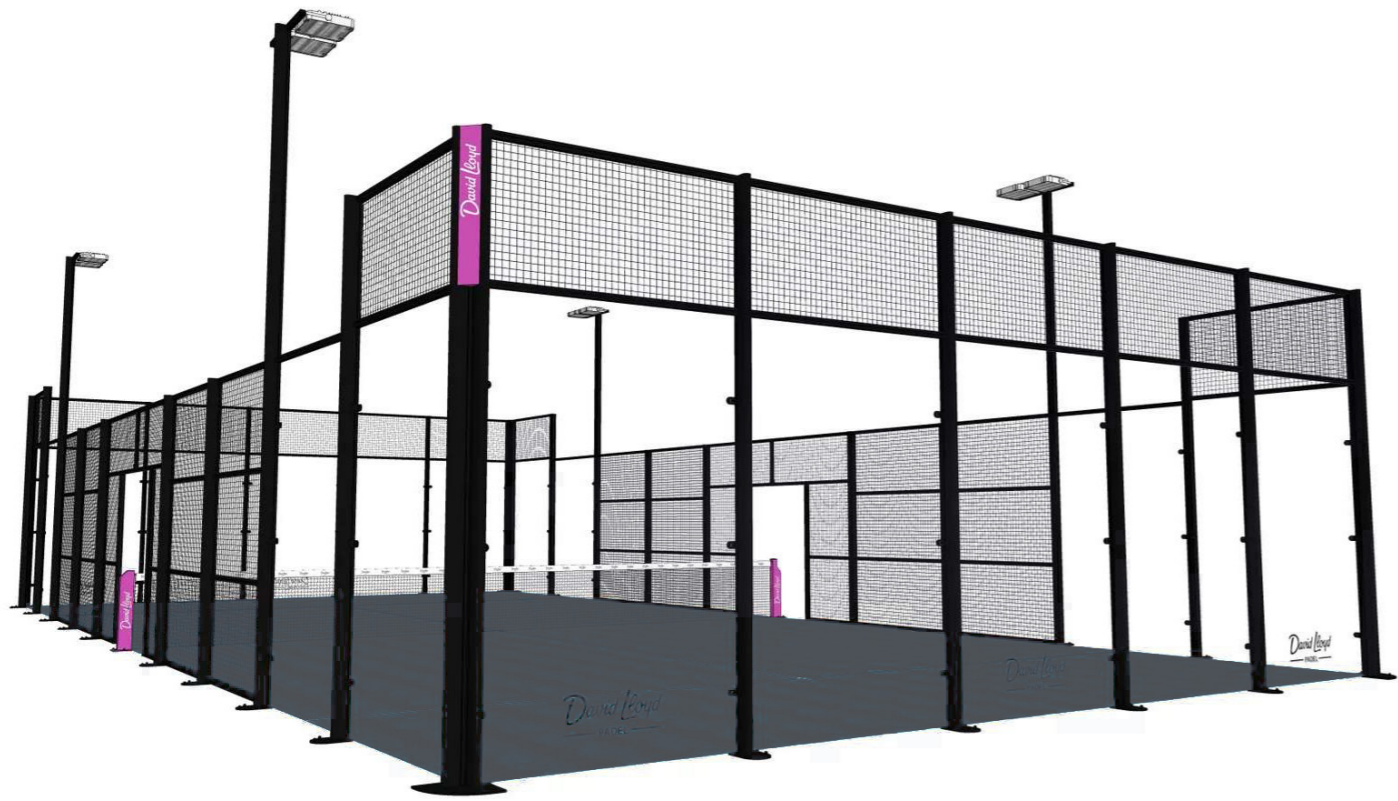


Fig. 7 Padel Court Plan & Elevations with Canopy





**Fig. 8** Typical Padel Court 3D Render

#### 4. Design Proposal

It is proposed to replace 3 existing tennis courts with 6 no. padel courts, 3 of these having a padel court cover.

Designed to stay true to the sport's origins, these padel courts will feature a pillars type structure, anti-injury mesh infill panels and 10mm approved glass resulting in attractive and minimalist aesthetics. The playing surface will be the latest technology in artificial grass, ensuring that these facilities will be attractive to everyone from total beginners to seasoned players.

The 4no. 240W LED projectors used to evenly light the space offer a large reduction in potential energy use when compared to traditional halide lamps, with longer life and greater eco-efficiency.



**Fig. 9** Typical Padel Court Image





The canopy is an elegant structure that allows the maximum amount of light and has a minimal footprint that is only slightly bigger than the padel court. A solid galvanized steel posted structure with a high tech polycarbonate roof covering held in aluminium extrusions ensuring the weather will be kept at bay throughout the year.



**Fig. 10** Typical Padel Court Canopy Images

## 5. Access

### 5.1 Vehicular and transport links

There are no proposed changes to the site access and transport links.

### 5.2 Disabled Access

The David Lloyd Club has allocated disabled parking and full level access throughout with disabled changing facilities and appropriate sporting and leisure activities. Level access is to be used across the proposed works to promote free movement of all members throughout the facility.

### 5.3 Wayfinding

The directional and information signage adopted in the club will be supplemented with pictograms or symbols, wherever possible.

Design & Access Statement prepared by:  
**Hadfield Cawkwell Davidson Limited**  
 13 Broomgrove Road  
 Sheffield, S10 2LZ  
 tel. 0114 266 8181  
 www.hcd.co.uk

2023-154\_DLC David Lloyd Hampton\_October 2024\_P01