







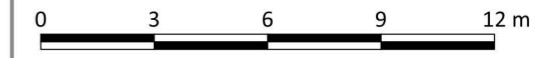




- Key:
-  Site Boundary
 -  Developed land; sealed surface: Building (0.0425ha)
 -  Developed land; sealed surface: Hardstanding (0.0325ha)
 -  Introduced shrub (0.0100ha)
 -  Modified grassland (0.0100ha)
 -  Proposed Biodiverse green roof (0.0400ha)
 -  Retained Modified grassland (0.0100ha)
 -  Retained Tree [4]



aspect ecology
 APEM Group

Aspect Ecology Limited - West Court - Hardwick Business Park
 Noral Way - Banbury - Oxfordshire - OX16 2AF
 01295 279721 - info@aspect-ecology.com - www.aspect-ecology.com

St Mary's University Twickenham
 (New Teaching Block)
 Post-development Habitat Mapping

6905/BNG2

B/JP

October 2024

DS/JP



BIN STORES

BIKE STORES

P:\Project\Aspect Ecology Projects\ECO_6900\1006905\Graphics\GIS\6905_BNG_482