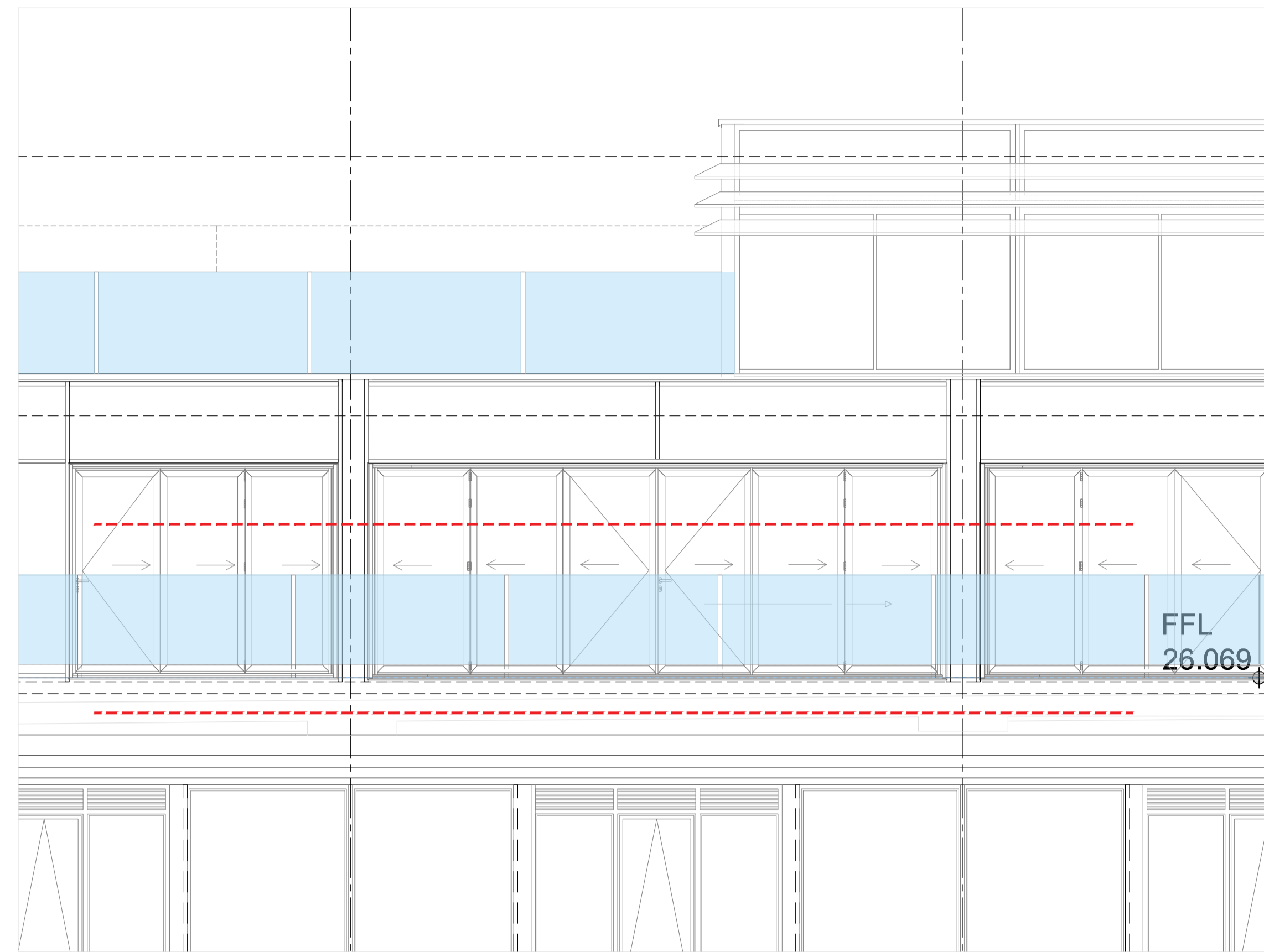
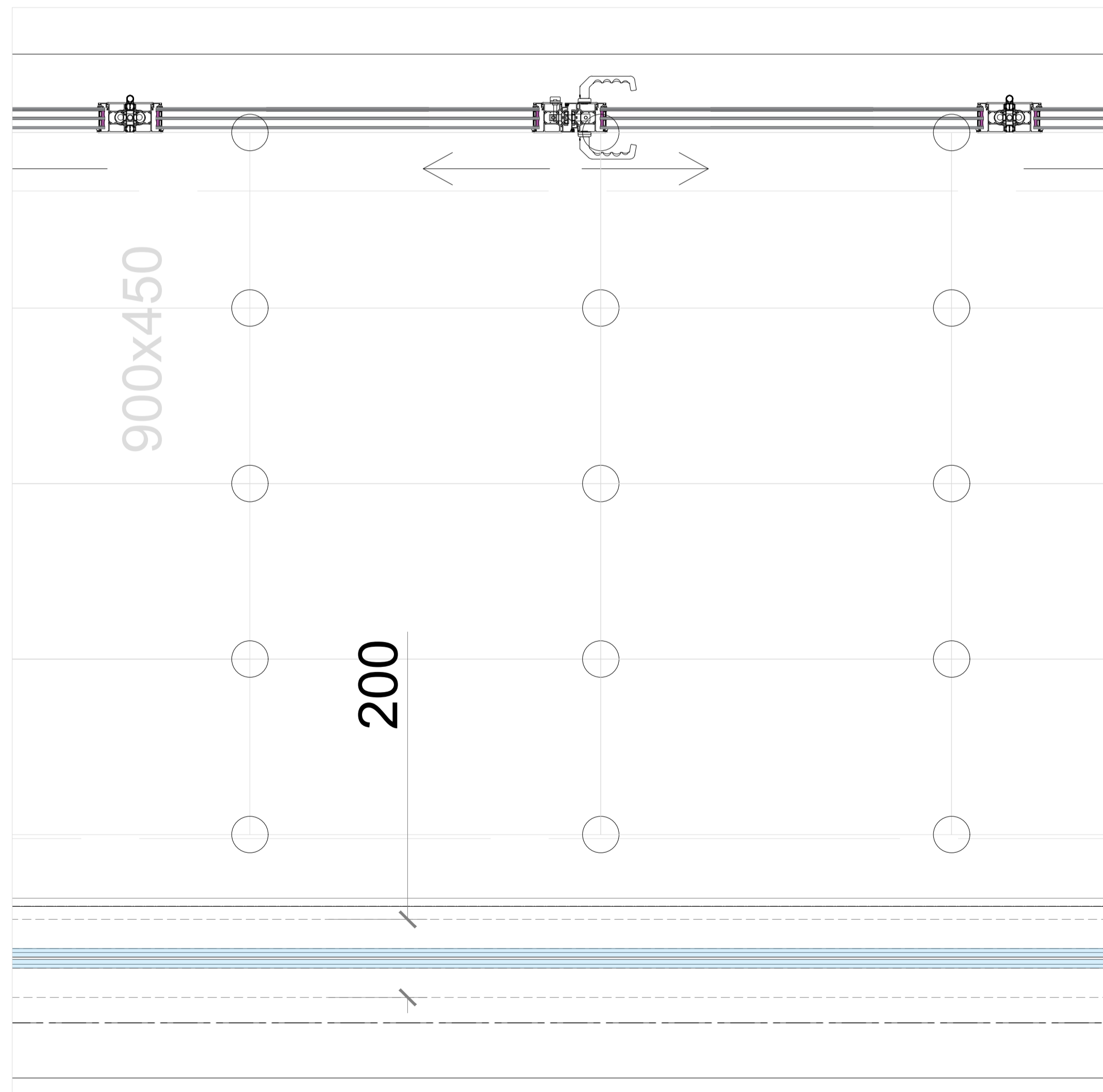


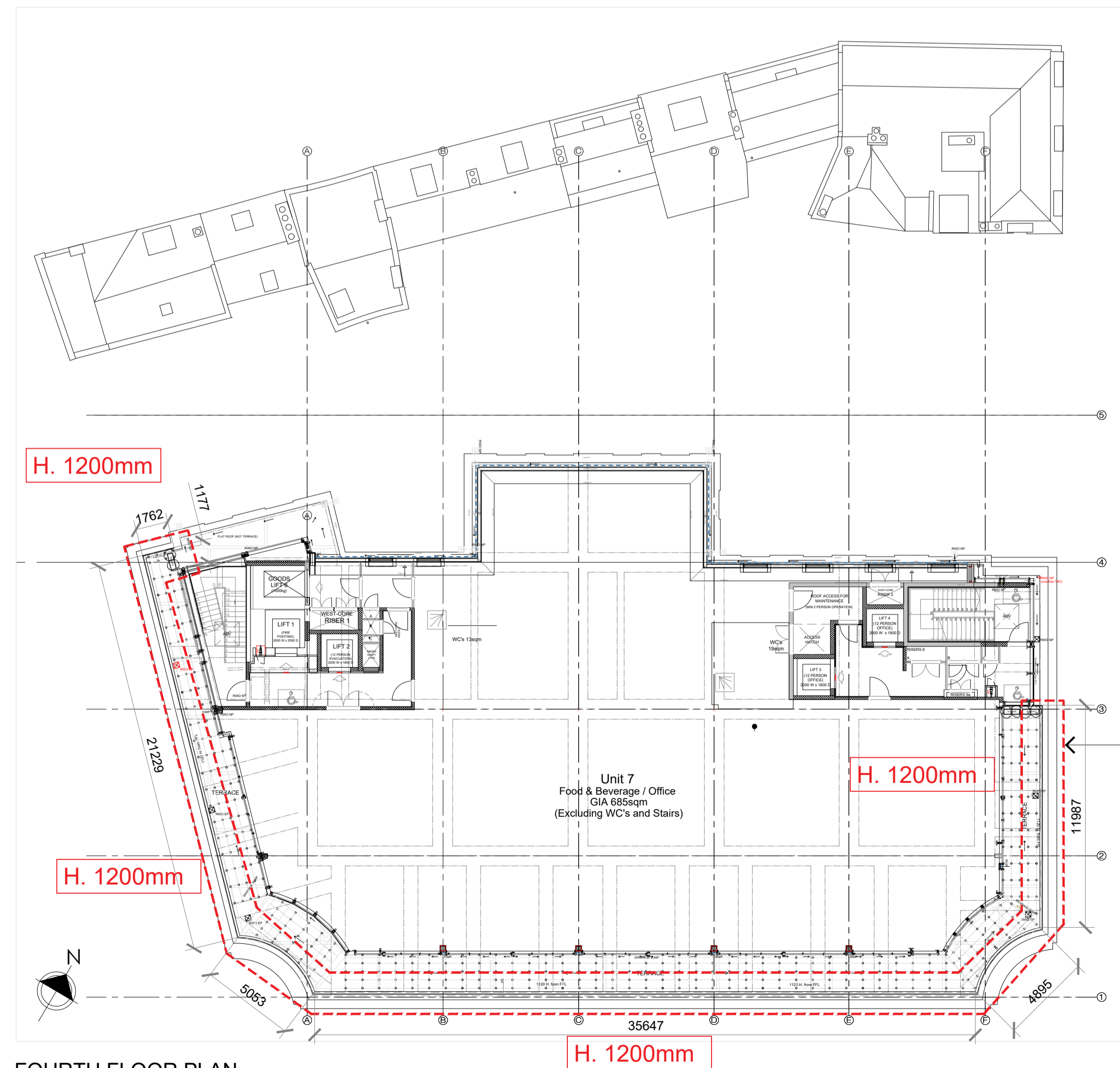
FOURTH FLOOR BALUSTRADE DETAIL
Scale 1:10



GEORGE STREET ELEVATION- FOURTH FLOOR
Scale 1:50



FOURTH FLOOR BALUSTRADE- PLAN
Scale 1:10

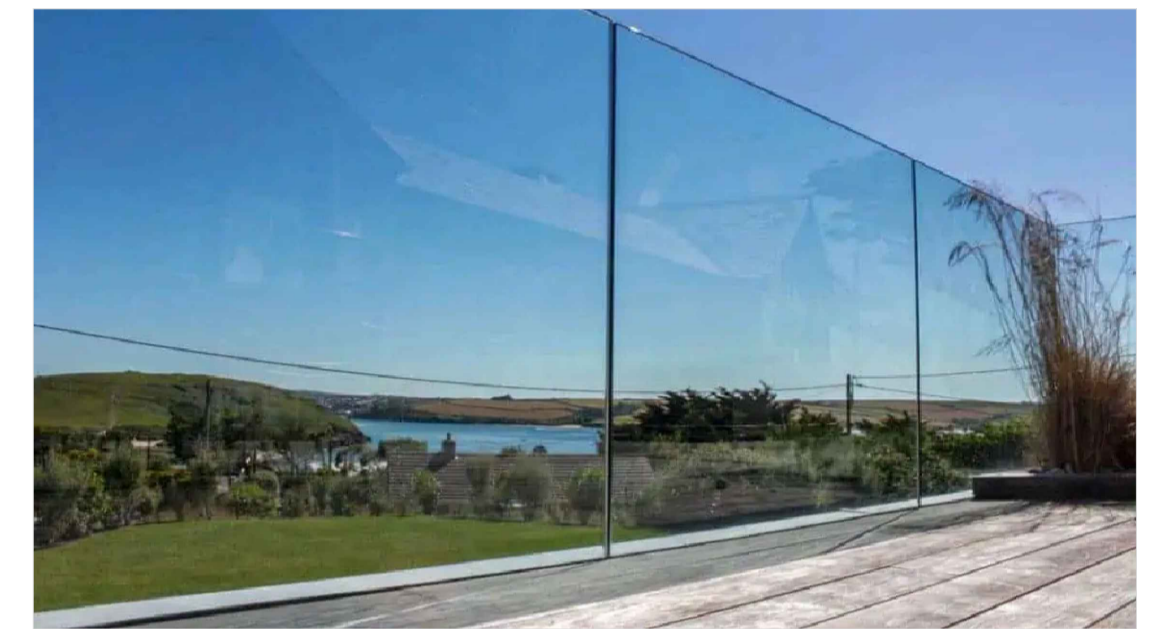


FOURTH FLOOR PLAN
Scale 1:200

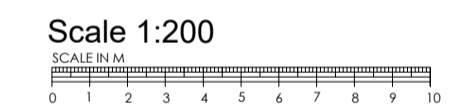
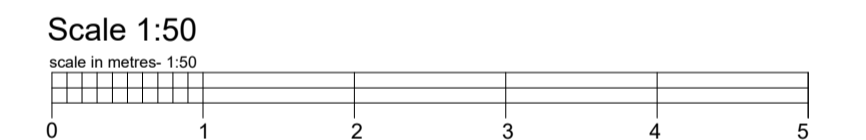
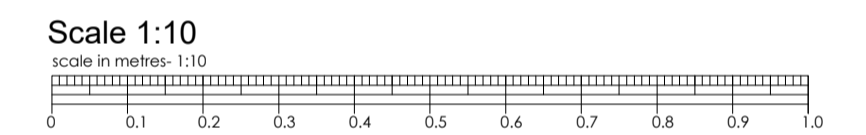
KEY:

- 01 21.5mm glass balustrade 1200mm H FFL. Installed by specialist.
- NB. Balustrade to be designed for a minimum horizontal force of 1.5kN/m.
- Fixings to be designed by manufacturer.
- 02 Existing upstand base- cast insitu concrete in accordance with SE designs. Minimum 200mm wide x 150mm high base to allow for RC detailing.
- 03 Existing wall below parapet- prepare wall (existing deteriorating paint) to receive new external render and paint.

-Note: Loading Requirements 1.5 kN/m



Frameless Glass Balustrade



Extent of balustrade on Fourth Floor

- REVISIONS
- 15.11.24 Rev: 09. General Update.
 - 16.09.24 Rev: 08. Minor amendments made to balustrade height.
 - 10.05.24 Rev: 07. General update
 - 01.02.24 Rev: 06. Gap between balustrades now 20mm. Balustrades now 1100mm high.
 - 11.01.24 Rev: 05. Client requested amendments
 - 14.12.23 Rev: 04. Balustrade relocated to top of parapet.
 - 15.09.23 Rev: 03. Top of Concrete Upstand (TOCU) and FFL Levels added.
 - 15.08.23 Rev: 02. Concrete plinths flush with singly ply membrane/ weathering layer.
 - 27.07.23 Rev: 01. Notes amended base on comments from Structural Engineer.

PLANNING

TITLE
HOUSE OF FRASER, 75-81 GEORGE STREET, TW9 1HA

CLIENT
SHEENLANE DEVELOPMENTS LTD

DESCRIPTION
PROPOSED FOURTH FLOOR BALUSTRADE DETAIL

date:	scale:	project:	drawing:	revision:
MAR 23	1:10 1:50 1:200 @ A1	220105	P02-308	09

SILVERLINE ARCHITECTS

EMAIL: INFO@SILVERLINEARCHITECTS.COM