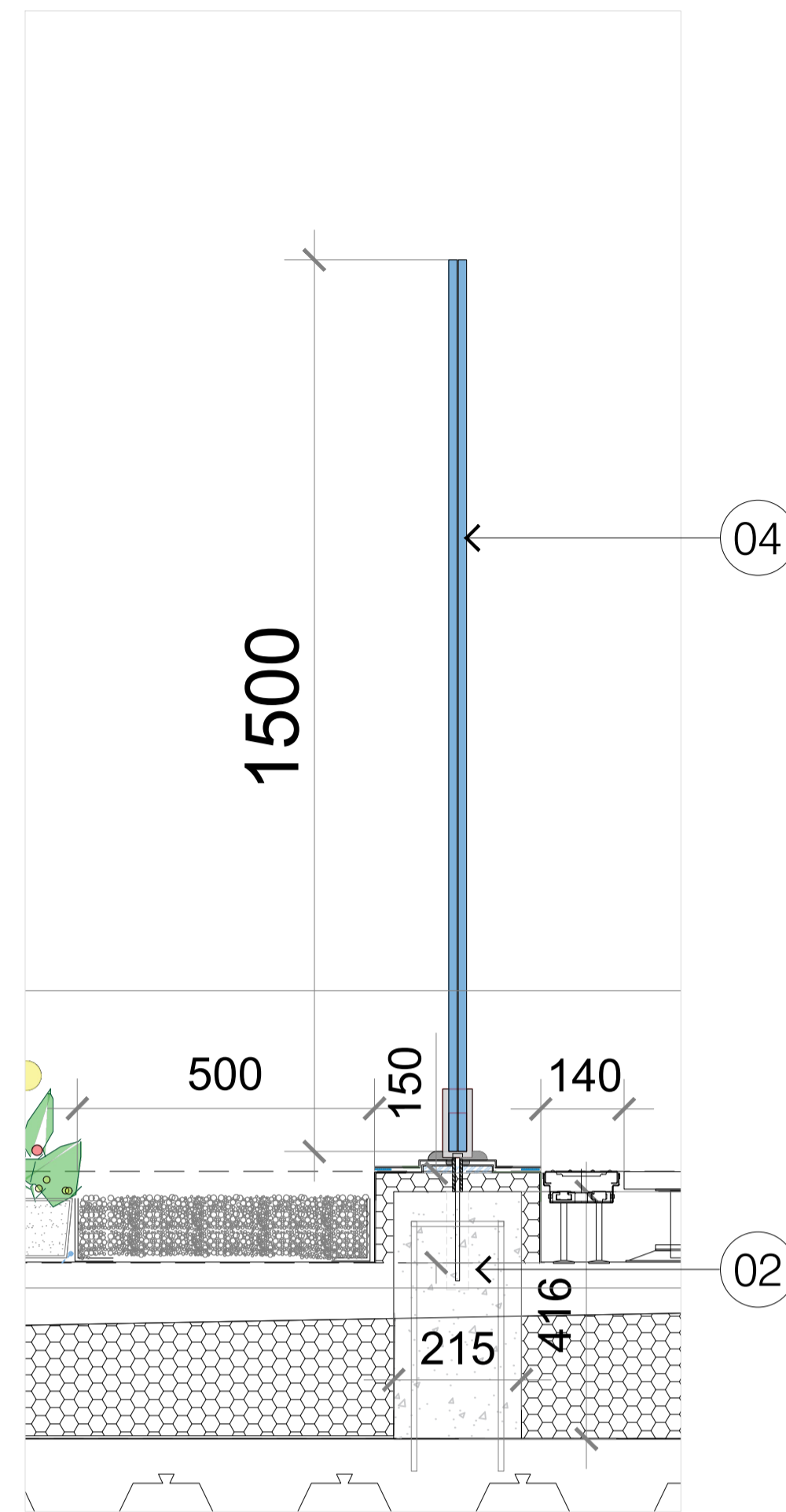
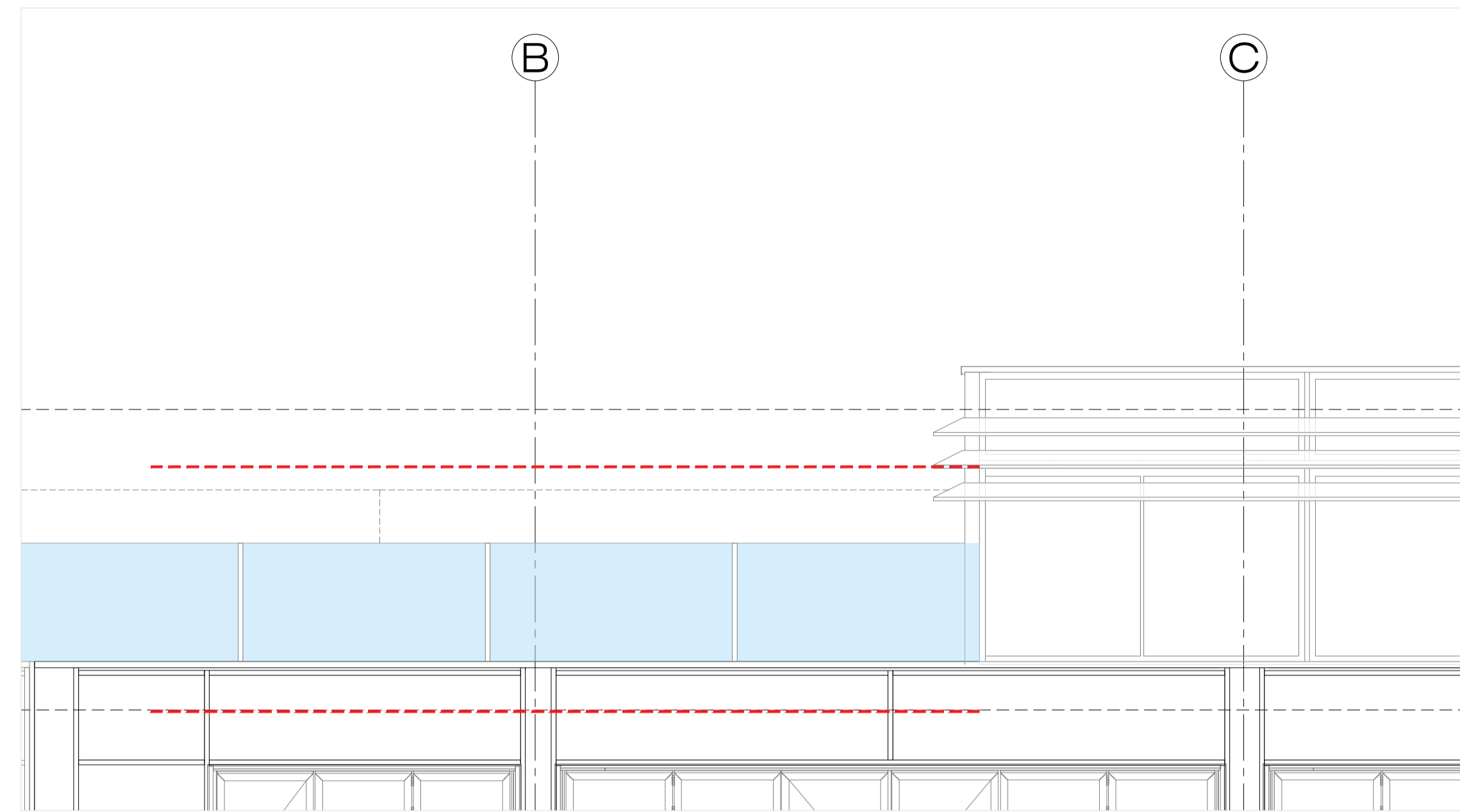


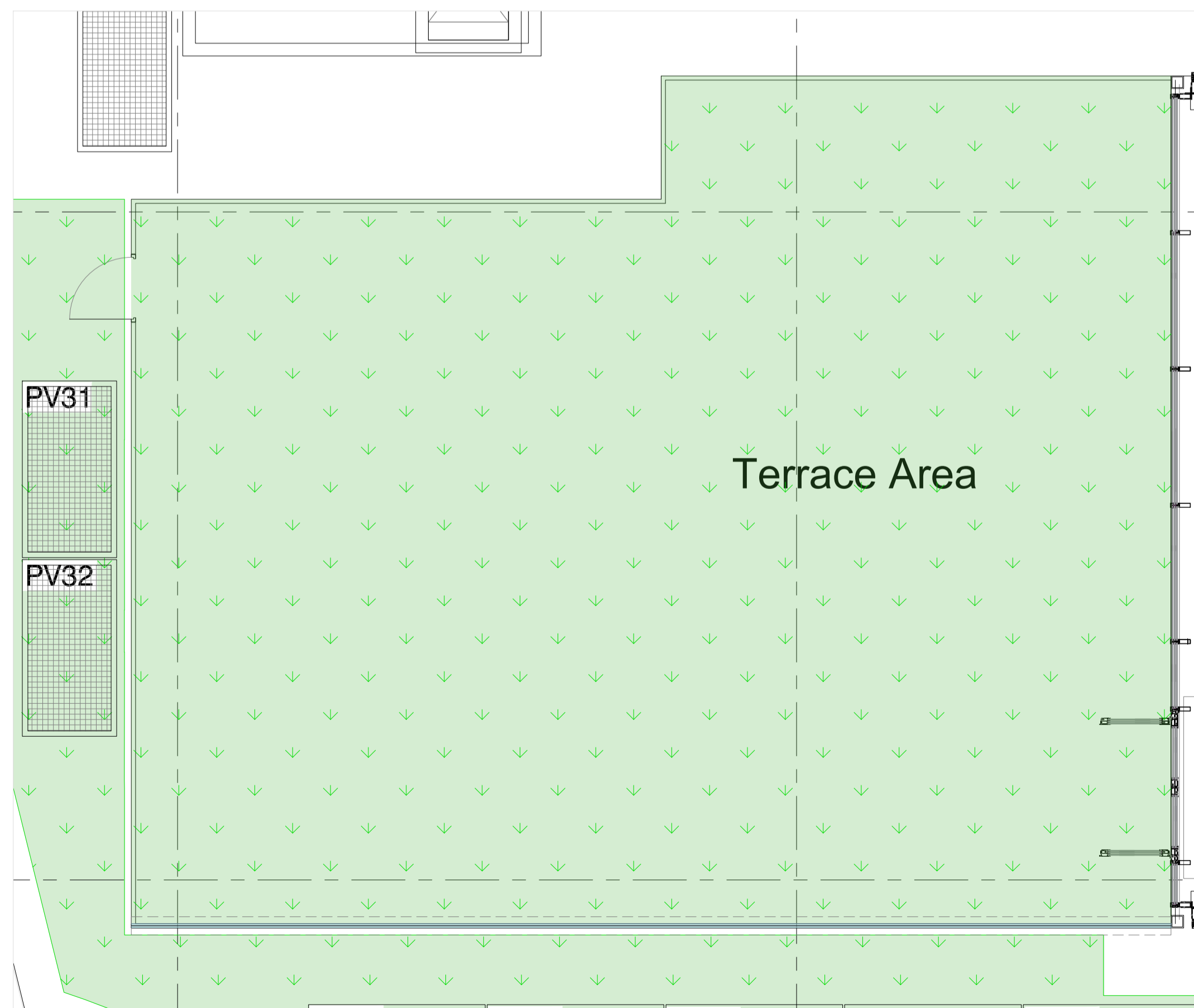
FIFTH FLOOR 1200MM HIGH BALUSTRADE DETAIL
Scale 1:10



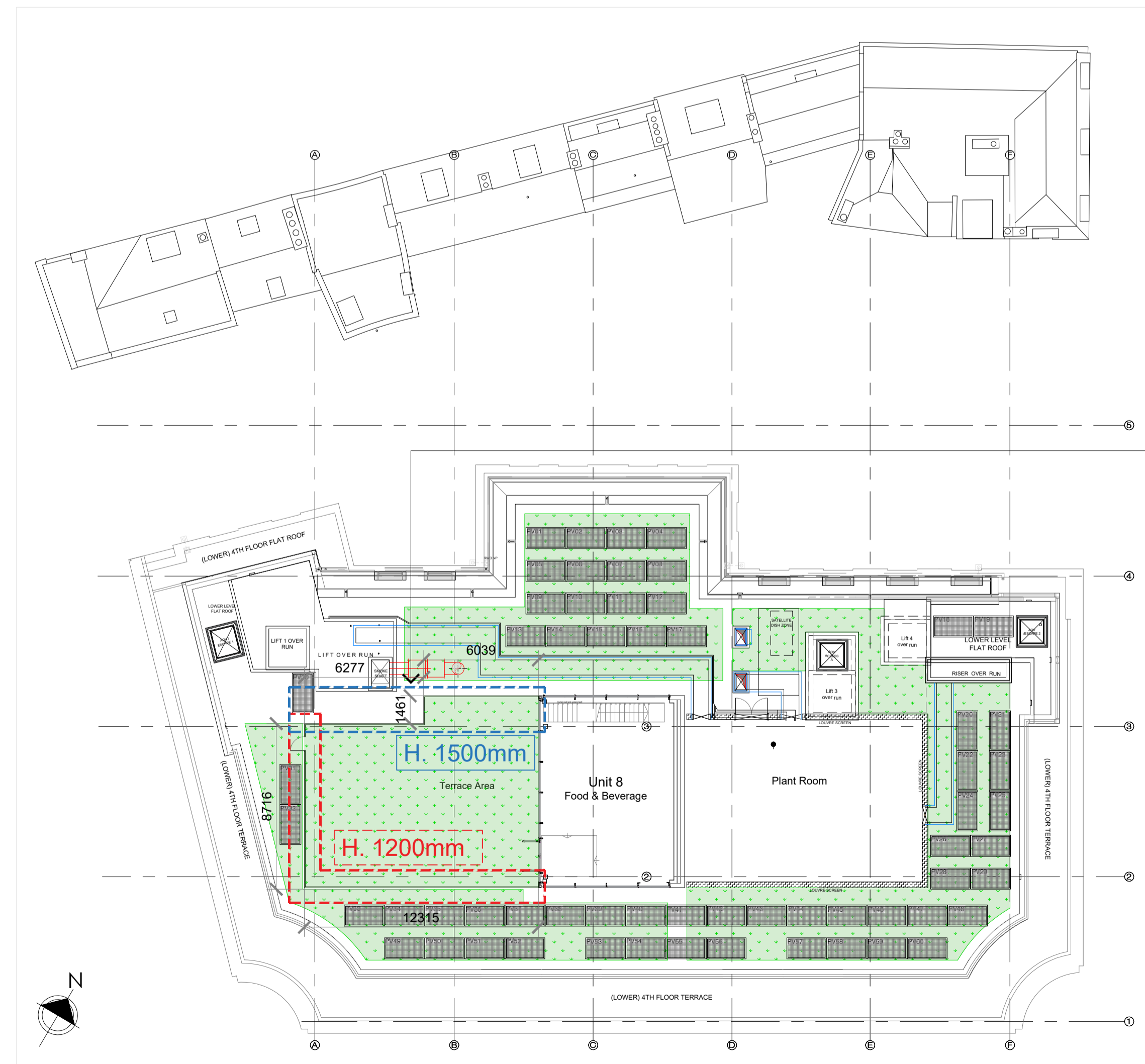
FIFTH FLOOR 1500MM HIGH ACOUSTIC SCREEN DETAIL
Scale 1:10



GEORGE STREET ELEVATION- FIFTH FLOOR
Scale 1:50



FIFTH FLOOR BALUSTRADE- PLAN
Scale 1:50



FIFTH FLOOR PLAN
Scale 1:200

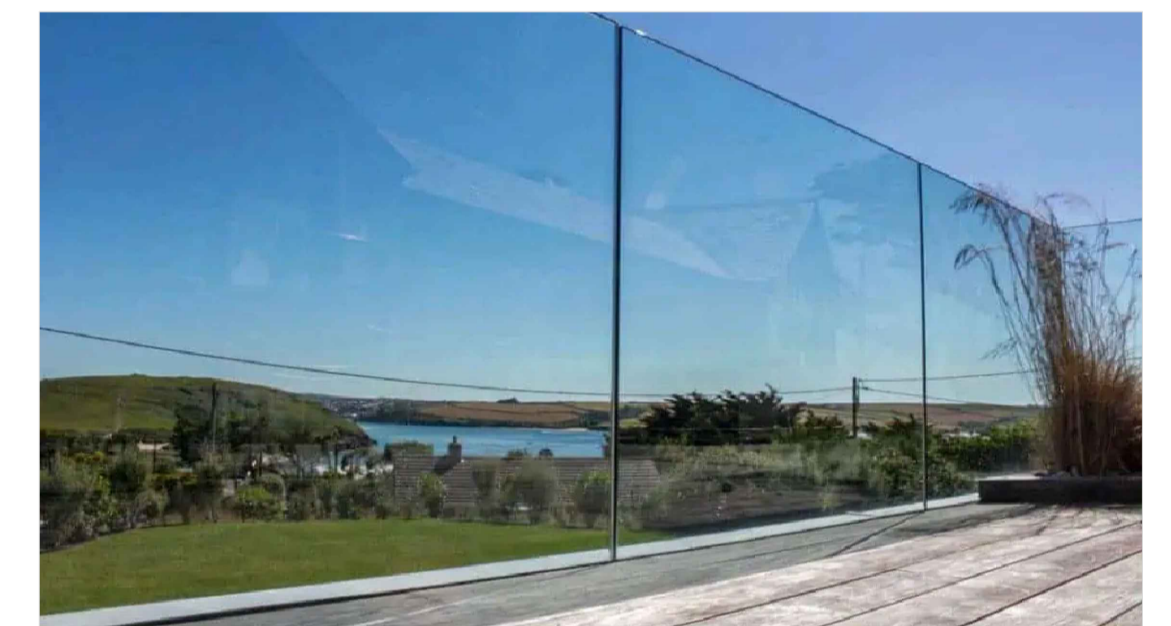
KEY:

- 01 21.5mm glass balustrade 1200mm H FFL. Installed by specialist.
- NB. Balustrade to be designed for a minimum horizontal force of 1.5kN/m.
- Fixings to be designed by manufacturer.
- 02 Balustrade upstand base- cast insitu concrete in accordance with SE designs. Minimum 200mm wide x 150mm high base to allow for RC detailing.
- 03 New reinforced concrete upstand
- 04 25.5mm opaque back-painted glass: RAL 7035 Light Grey. Acoustic Screen 1500mm H. Installed by specialist .

-Note: Loading Requirements 1.5 kN/m

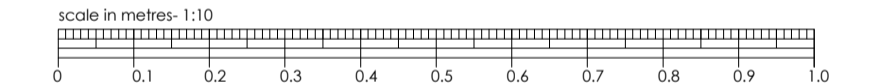


Opaque back-painted glass: RAL 7035 Light Grey

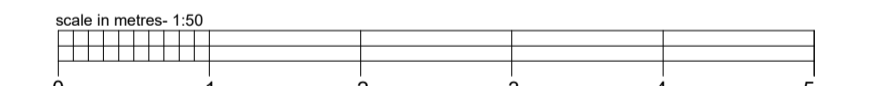


Frameless Glass Balustrade

Scale 1:10



Scale 1:50



Scale 1:200



Extent of balustrade on Fifth Floor

- REVISIONS
- 15.11.24 Rev: 09. General Update.
 - 16.09.24 Rev: 08. Minor amendments made to balustrade height.
 - 09.07.24 Rev: 07. Minor amendments made to acoustic screen.
 - 10.05.24 Rev: 06. General updates made.
 - 01.02.24 Rev: 05. Gap between balustrades now 20mm. Balustrades now 1100mm high.
 - 05.01.24 Rev: 04. Balustrade height amended.
 - 14.12.23 Rev: 03. Balustrade relocated to top of parapet.
 - 15.08.23 Rev: 02. Concrete plinths flush with singly ply membrane/ weathering layer.
 - 27.07.23 Rev: 01. Notes amended base on comments from Structural Engineer.

PLANNING

TITLE
HOUSE OF FRASER, 75-81 GEORGE STREET, TW9 1HA

CLIENT
SHEENLANE DEVELOPMENTS LTD

DESCRIPTION
PROPOSED FIFTH FLOOR BALUSTRADE DETAIL

date:	scale:	project:	drawing:	revision:
MAR 23	1:10 1:50 1:200 @ A1	220105	P02-309	09

SILVERLINE ARCHITECTS

EMAIL: INFO@SILVERLINEARCHITECTS.COM

ALL DIMENSIONS TO BE CHECKED BY SITE. ANY DISCREPANCY BETWEEN THIS DRAWING AND OTHER INFORMATION IS TO BE REFERRED TO SILVERLINE ARCHITECTS. THIS DRAWING IS COPYRIGHT.