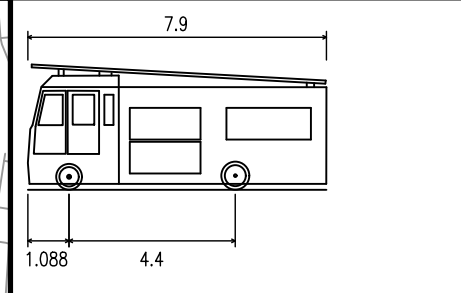
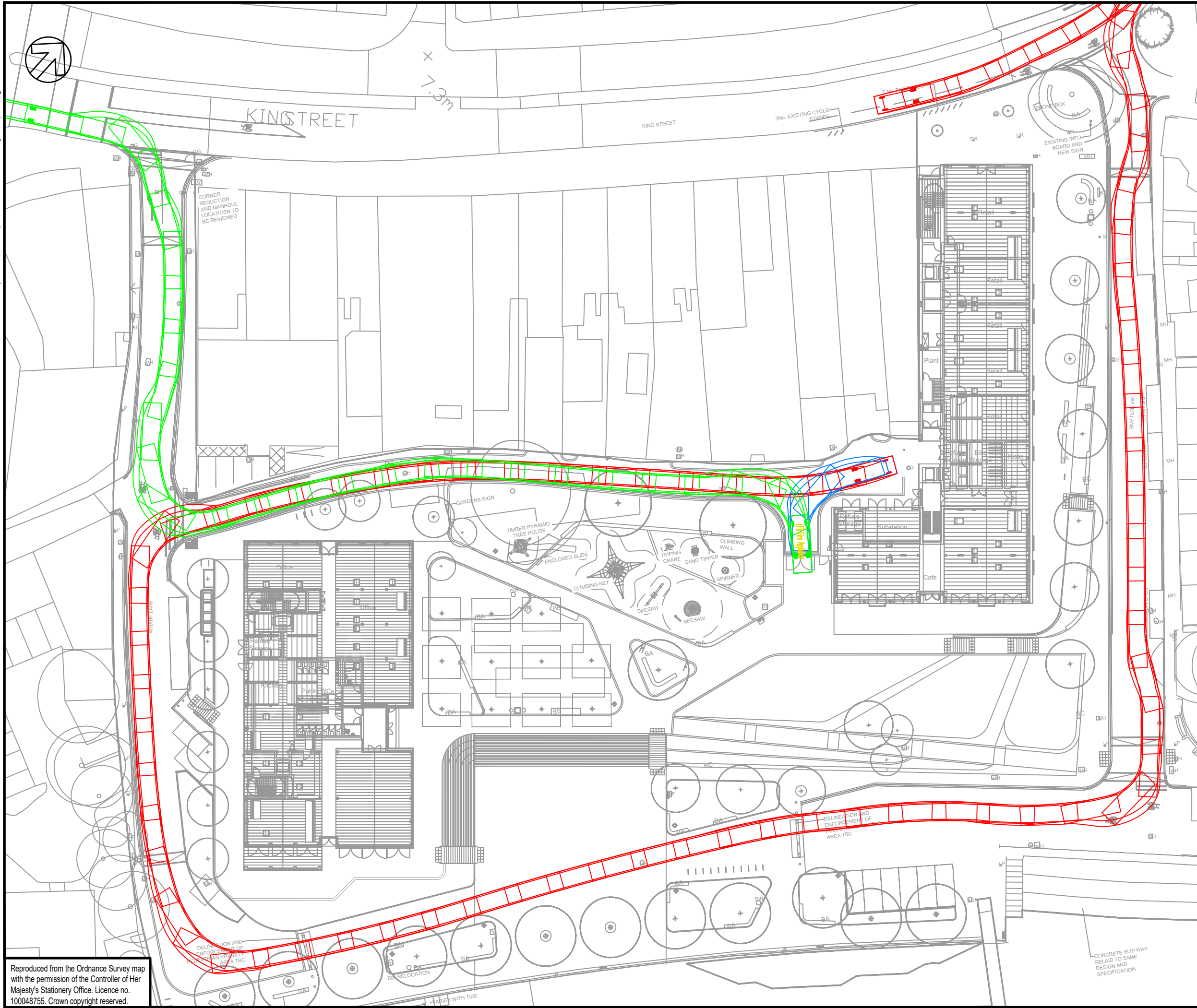


File name \\UK.WSPGROUP.COM\CENTRAL DATA\PROJECTS\70059704 - TWICKENHAM RIVERSIDE - HOPKINS\03 DRAWINGS\03 WIP\WSP TRANSPORT PLANNING\03 DRAWINGS\70059704-TP-SK-52.DWG, printed on 14 September 2022 13:01:34, by Burton, Craig



LFB Fire Appliance
Overall Length 7.900m
Overall Width 2.500m
Overall Body Height 3.314m
Min Body Ground Clearance 0.154m
Max Track Width 2.121m
Lock to Lock Time 6.00s
Kerb to Kerb Turning Radius 8.400m

NOTE:
THIS DRAWING IS PROVIDED FOR SWEEP
PATH ANALYSIS ONLY AND IS SUBJECT
TO REVIEW BY THE FIRE CONSULTANT



wsp

TITLE:
HOPKINS MASTERPLAN
PROPOSED HIGHWAY ARRANGEMENT
FIRE ACCESS SWEEP PATH ANALYSIS

FIGURE No:
70059704-TP-SK-52-TR18

Reproduced from the Ordnance Survey map with the permission of the Controller of Her Majesty's Stationary Office. Licence no. 100048755. Crown copyright reserved.