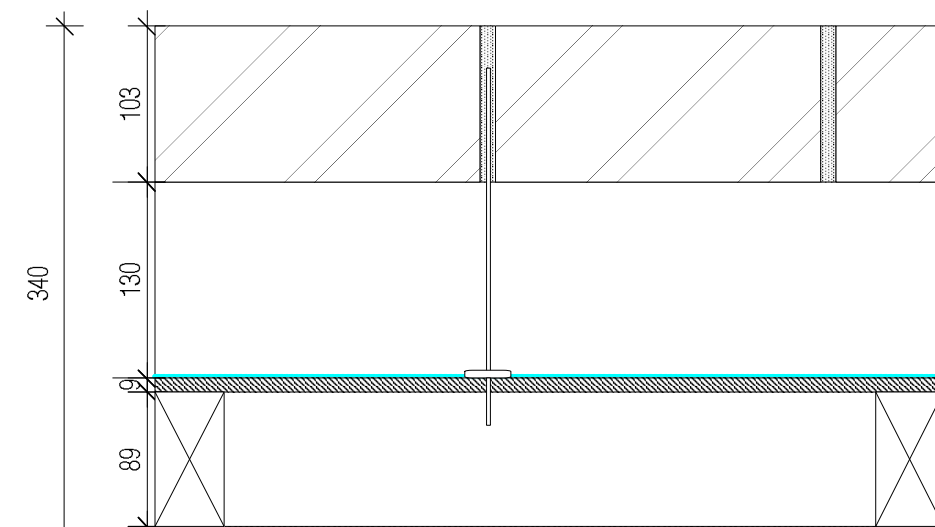


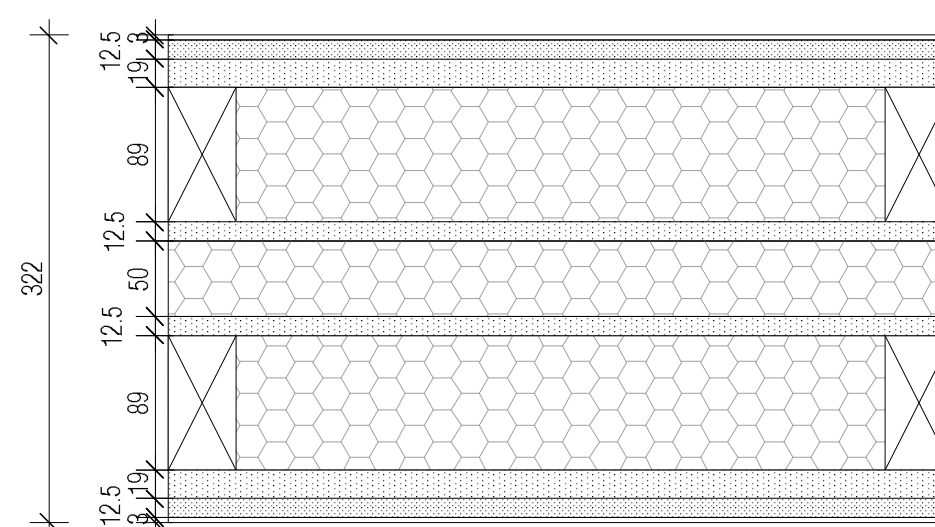
F1: GROUND FLOOR - THICKNESS 465MM
U-VALUE = 0.093 W/m²K

- 20MM FLOOR FINISHES
- 75MM SAND CEMENT SCREED WITH POLYPIPE UNDERFLOOR HEATING SYSTEM
- POLYTHENE SHEET SEPARATING LAYER (NOT LESS THAN 125 MICRONS/500 GAUGE)
- 220MM EUROTHANE GP INSULATION, THERMAL CONDUCTIVITY 0.022 W/mK (OR SIMILAR APPROVED)
- DPM MEMBRANE RW SHEETS/SEAL 226 (OR SIM. APPR.) OVERLAPPED WITH DPC RETURNED UP THE BLOCK UPSTAND BELOW EXTERNAL WALLS AND GLUED TO WALL VCL
- PRECAST BEAM AND BLOCK FLOOR WITH JOINTS GROUTED, ROUGH SUB-FLOOR OR CAMBER LEVELER TO BE APPLIED WHERE NECESSARY BEFORE LAYING D.P.M AND INSULATION. BEAM SPECIFICATIONS TO SPECIALIST SUBCONTRACTORS SPECIFICATION
- 150MM VOID DEPTH TO SE SPECIFICATION



W1C - EXTERNAL PARAPET WALL
THICKNESS 340MM

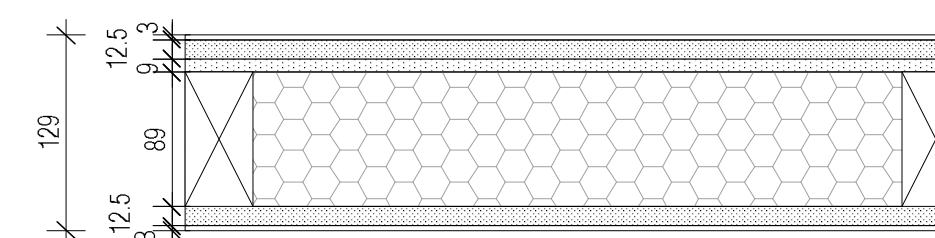
- 102.5MM DANEHILL YELLOW BRICK, STRETCHER BOND, GEORGIAN MIX LIME MORTAR
- 150MM MINIMUM CAVITY WITH TEPL0-BFL-5-180 WALL TIES
- KINGSPAN NILVENT BREATHER MEMBRANE (OR SIMILAR APPROVED), OVERLAP JOINTS BY 150MM
- 89 X 45 MM TIMBER STUDS WITHOUT INSULATION
- 18MM PLYWOOD DECK
- SINGLE-PLY MEMBRANE ALWITRA EVALON ADHERED APPLICATION (OR SIMILAR APPROVED), TURNED OVER THE UPSTAND PARAPET AND OVER THE TOP OF IT



W2 - INTERNAL LOAD-BEARING PARTITION WALL TO PLOT 1 & 2, 2 & 3 AND 4 & 5
THICKNESS 322MM, 60 MIN FIRE RESISTANCE

- 3MM PAINT SKIM
- 12.5MM BRITISH GYPSUM GYPROC WALLBOARD PLASTERBOARD
- 19MM PLANK PLASTERBOARD
- 89 X 45 MM TIMBER STUDS WITH 90MM INSULATION (OR SIM. APPRV.) AT 600CTRS
- 12.5MM FERMACELL
- 50MM CAVITY WITH 65MM CAVITY INSULATION BY KINGSPAN
- 12.5MM FERMACELL
- 89 X 45 MM TIMBER STUDS WITH 90MM INSULATION (OR SIM. APPRV.) AT 600CTRS
- 19MM PLANK PLASTERBOARD
- 12.5MM BRITISH GYPSUM GYPROC WALLBOARD PLASTERBOARD
- 3MM SKIM PAINTED

NOTE - W2A - EXTERNAL WALL TO WET ROOMS, ADD:
~~12.5MM BRITISH GYPSUM GYPROC WALLBOARD PLASTERBOARD~~
 - 12MM TILE BACKER BOARD + 10MM TILES



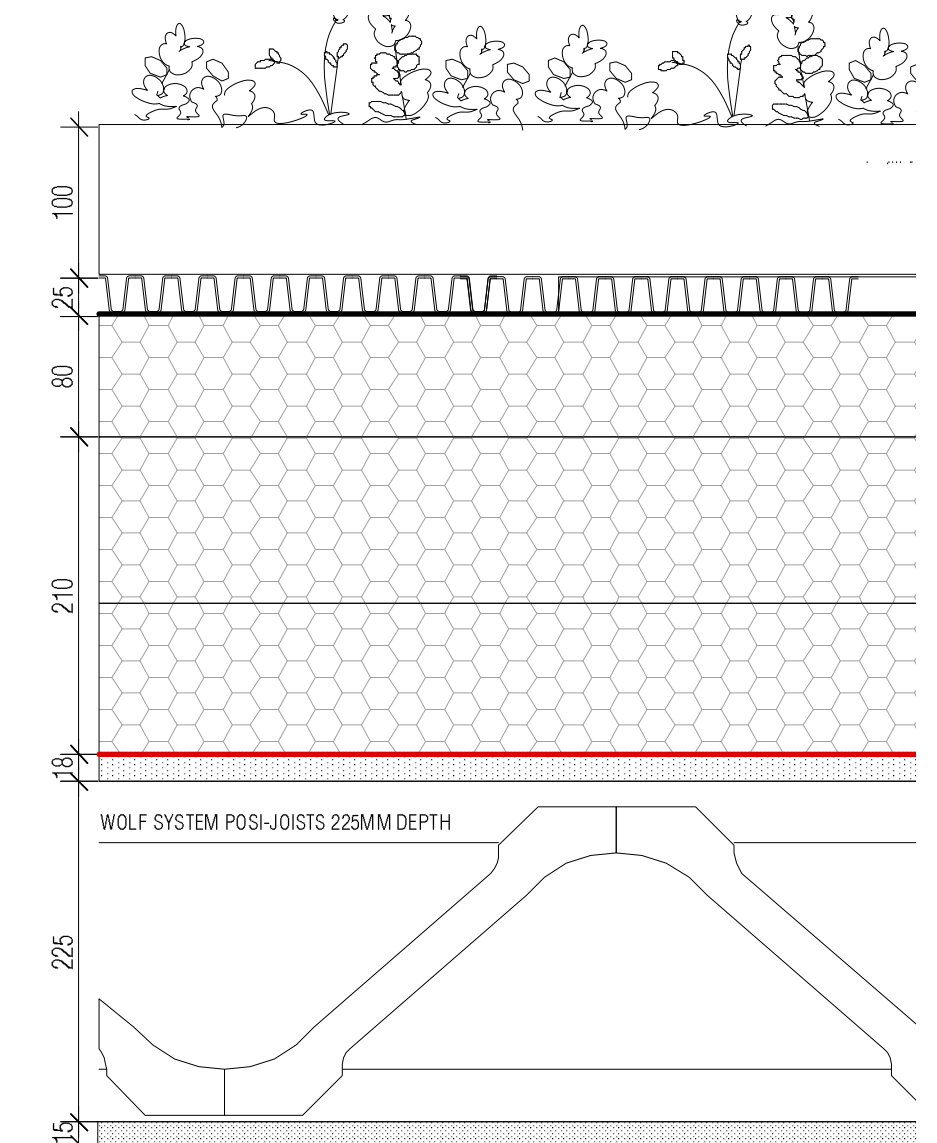
W5 - INTERNAL LOAD BEARING PARTITION - THICKNESS 129MM, 30 MIN FIRE RESISTANCE

- 3MM PAINT SKIM
- 12.5MM BRITISH GYPSUM GYPROC WALLBOARD PLASTERBOARD
- 89 X 45 MM TIMBER STUDS WITH 89MM ISOVER PARTITION ROLL (OR SIM. APPRV.)
- 9MM PLYWOOD
- 12.5MM BRITISH GYPSUM GYPROC WALLBOARD PLASTERBOARD
- 3MM SKIM PAINTED

NOTE - W5A - WALL TO WET ROOMS, 136MM:
~~12.5MM BRITISH GYPSUM GYPROC WALLBOARD PLASTERBOARD~~
 - 9MM PLYWOOD TO BE ON THE SIDE OF WET ROOM, OVER POCKET SLIDING DOOR
 - 12MM TILE BACKER BOARD + 10MM TILES

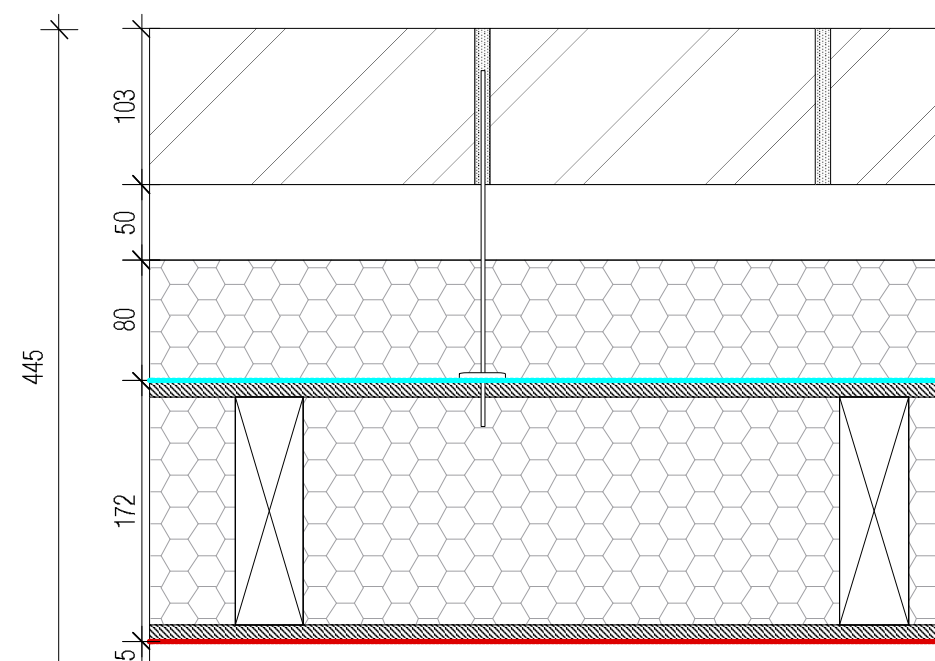
NOTE - W5B - WALL TO KITCHENS, 129MM:
~~12.5MM BRITISH GYPSUM GYPROC WALLBOARD PLASTERBOARD~~
 - 9MM PLYWOOD TO BE ON THE SIDE OF KITCHEN, BEHIND CABINETS
 - 12.5MM BRITISH GYPSUM MOISTURE RESISTANT BOARD + 3MM SKIM PAINTED

NOTE - W5C - WALL TO WET ROOM AND KITCHEN, 145MM:
 - 9MM PLYWOOD ON BOTH SIDES, FOLLOW W5A AND W5B



R1: FLAT ROOF - THICKNESS 655MM (VARIES)
U-VALUE = 0.08W/m²K

- EVAGREEN ICB WATERPROOFING (OR SIMILAR APPROVED) GREEN ROOF SYSTEM:
- GROWING MEDIUM (NATIVE WILD FLOWERS, GRASSES)
- 100MM BIODIVERSE SUBSTRATE
- FL200 FILTER FLEECE (OR SIMILAR APPROVED)
- 25MM DRAINAGE MAT
- PLS00 PROTECTION FLEECE (OR SIMILAR APPROVED)
- SINGLE-PLY MEMBRANE ALWITRA EVALON ADHERED APPLICATION (OR SIMILAR APPROVED)
- EVATHERM TISSUE-BACK TAPERED INSULATION, TO 1:40 FALLS (HEIGHT VARIES) (OR SIM. APPRV.)
- 210MM EVATHERM TISSUE-BACK INSULATION (100MM + 110MM), THERMAL CONDUCTIVITY 0.025 W/MK (OR SIMILAR APPROVED)
- ROOF VAPOUR CONTROL LAYER (CB STRATAVAP PART OF ROOFING SYSTEM (OR SIMILAR APPROVED) (ROOF VCL TBC)
- 18MM PLYWOOD DECK
- 225MM POSI-JOIST @ 400CTRS (CTRS TBC)
- 15MM GYPSUM SOUNDBLOC PLASTERBOARD + 3MM PAINT SKIM



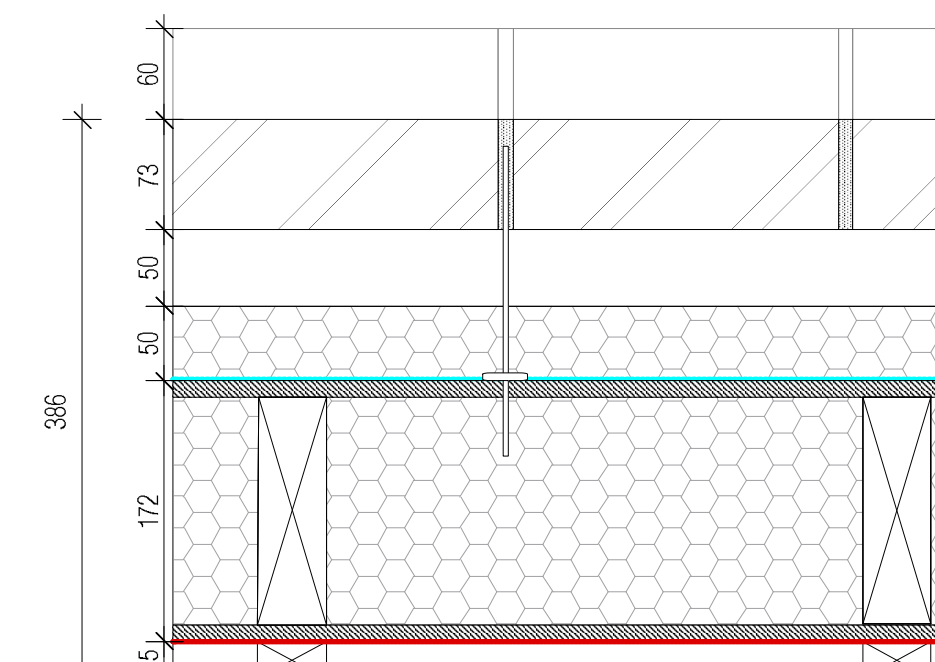
W1 - EXTERNAL WALL - THICKNESS 445MM
U-VALUE = 0.097 W/m²K

- 102.5MM DANEHILL YELLOW BRICK, STRETCHER BOND, GEORGIAN MIX LIME MORTAR
- 50MM MINIMUM CAVITY WITH TEPL0-BFL-5-205 WALL TIES, BATTENS AT 600 CTRS
- 80MM THERMAWALL TW55 ZERO ODP 0.022 W/MK (OR SIMILAR APPROVED)
- KINGSPAN NILVENT BREATHER MEMBRANE (OR SIMILAR APPROVED), OVERLAP JOINTS BY 150MM
- 172MM STRUCTURALLY INSULATED PANEL (SIP) KINGSPAN TEK (OR SIMILAR APPROVED)
- GLIDEVALE BARRIER VAPOUR CONTROL LAYER (OR SIMILAR APPROVED), OVERLAP JOINTS BY 150MM AND TAPE USING GERBAND 586, ADHERED TO FLOOR CONCRETE SLAB WITH ORCON-F. REFER TO KINGSPAN MEMBRANE DETAILS.
- 25 x 50MM TREATED SW VERTICAL TIMBER BATTENS FORMING CAVITY FOR SERVICES, AT 400 CTRS
- 12.5MM BRITISH GYPSUM GYPROC WALLBOARD + 3MM SKIM PAINTED

NOTE - W1A - EXTERNAL WALL TO WET ROOMS:
~~12.5MM BRITISH GYPSUM GYPROC WALLBOARD PLASTERBOARD~~
 - 12MM TILE BACKER BOARD + 10MM TILES

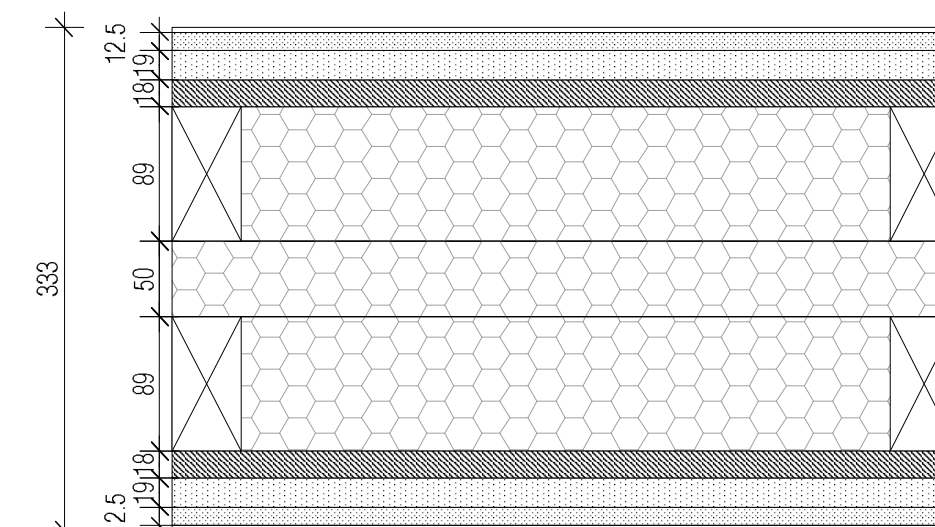
NOTE - W1B - EXTERNAL WALL TO KITCHENS:
~~12.5MM BRITISH GYPSUM GYPROC WALLBOARD PLASTERBOARD~~
 - 12.5MM BRITISH GYPSUM MOISTURE RESISTANT BOARD + 3MM SKIM

NOTE - W1C - EXTERNAL WALL WITH STEEL POST:
~~12.5MM BRITISH GYPSUM GYPROC WALLBOARD PLASTERBOARD/MOISTURE RESISTANT BOARD~~
 - 12.5MM GYPROC FIRELINE PLASTERBOARD + 3MM SKIM PAINTED



W1D - EXTERNAL RECESSED BRICK WALL - THICKNESS 386MM, 30 MIN FIRE RESISTANCE
U-VALUE = 0.112 W/m²K

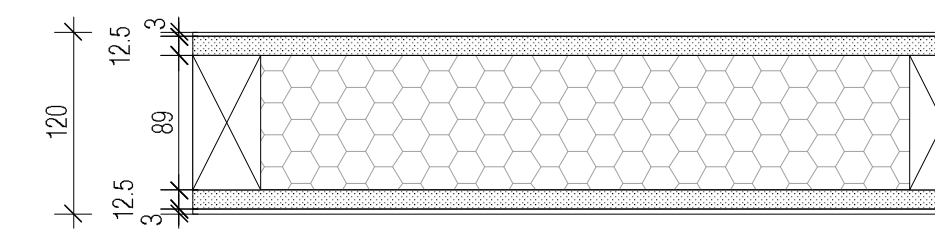
- 73MM CUT DANEHILL YELLOW BRICK, STRETCHER BOND, GEORGIAN MIX LIME MORTAR
- 50MM THERMAWALL TW55 ZERO ODP 0.022 W/MK (OR SIMILAR APPROVED)
- KINGSPAN NILVENT BREATHER MEMBRANE (OR SIMILAR APPROVED), OVERLAP JOINTS BY 150MM
- 172MM STRUCTURALLY INSULATED PANEL (SIP) KINGSPAN TEK (OR SIMILAR APPROVED)
- GLIDEVALE BARRIER VAPOUR CONTROL LAYER (OR SIMILAR APPROVED), OVERLAP JOINTS BY 150MM AND TAPE USING GERBAND 586, ADHERED TO FLOOR CONCRETE SLAB WITH ORCON-F. REFER TO KINGSPAN MEMBRANE DETAILS.
- 25 x 50MM TREATED SW VERTICAL TIMBER BATTENS FORMING CAVITY FOR SERVICES
- 12.5MM BRITISH GYPSUM GYPROC WALLBOARD + 3MM SKIM PAINTED



W3 - INTERNAL LOAD-BEARING PARTITION WALL BETWEEN PLOT 3 & 4 - THICKNESS 333MM, 60 MIN FIRE RESISTANCE

- 3MM PAINT SKIM
- 12.5MM BRITISH GYPSUM GYPROC WALLBOARD PLASTERBOARD
- 19MM PLANK PLASTERBOARD
- 18MM OSB GRADE 3
- 89 X 45 MM TIMBER STUDS WITH 90MM INSULATION (OR SIM. APPRV.) AT 600CTRS
- 50MM CAVITY WITH 65MM CAVITY INSULATION WITH NETLON TO KEEP IN PLACE
- 89 X 45 MM TIMBER STUDS WITH 90MM INSULATION (OR SIM. APPRV.) AT 600CTRS
- 18MM OSB GRADE 3
- 19MM PLANK PLASTERBOARD
- 12.5MM BRITISH GYPSUM GYPROC WALLBOARD PLASTERBOARD
- 3MM SKIM PAINTED

NOTE - W3A - EXTERNAL WALL TO WET ROOMS, ADD:
~~12.5MM BRITISH GYPSUM GYPROC WALLBOARD PLASTERBOARD~~
 - 12MM TILE BACKER BOARD + 10MM TILES

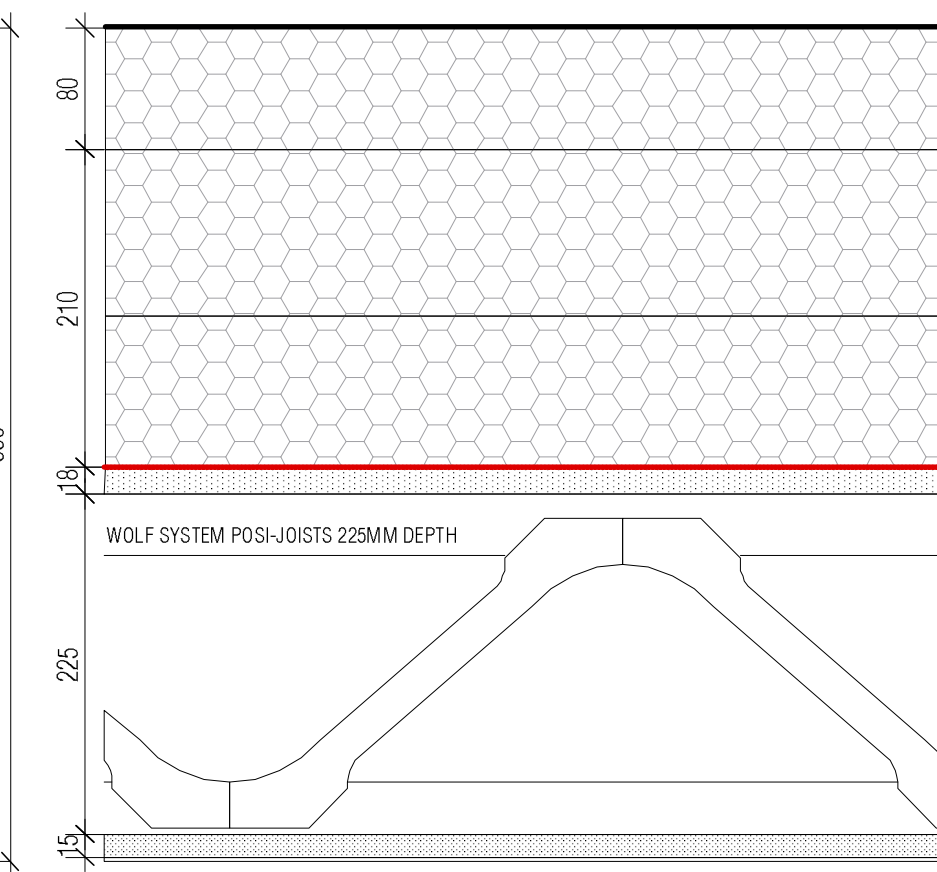


W6 - INTERNAL NON - LOAD BEARING PARTITION - THICKNESS 120MM, 30 MIN FIRE RESISTANCE

- 3MM PAINT SKIM
- 12.5MM BRITISH GYPSUM GYPROC WALLBOARD PLASTERBOARD
- 89 X 45 MM TIMBER STUDS WITH 89MM ISOVER PARTITION ROLL (OR SIM. APPRV.)
- 12.5MM BRITISH GYPSUM GYPROC WALLBOARD PLASTERBOARD
- 3MM SKIM PAINTED

NOTE - W6A - NON LOAD BEARING WALL TO WETROOM, 127MM:
~~12.5MM BRITISH GYPSUM GYPROC WALLBOARD PLASTERBOARD~~
 - 12MM TILE BACKER BOARD + 10MM TILES

NOTE - W6B - WALL TO MVHR CUPOBOARD, 133MM:
 - ADD 12.5MM GYPROC SOUNDBLOC



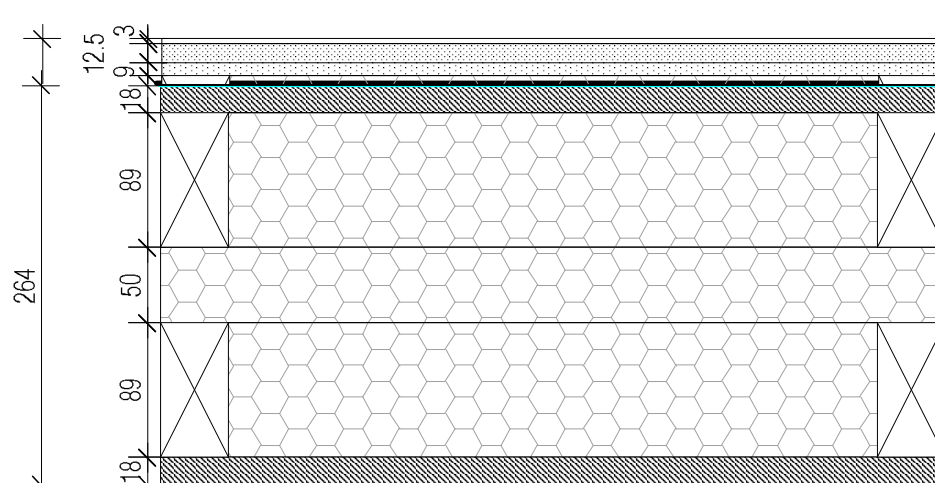
R2 LOWER ROOF - THICKNESS 550MM (VARIES)
U-VALUE = 0.08W/m²K

- SINGLE-PLY MEMBRANE ALWITRA EVALON ADHERED APPLICATION (OR SIMILAR APPROVED)
- EVATHERM TISSUE-BACK TAPERED INSULATION, TO 1:40 FALLS (HEIGHT VARIES) (OR SIMILAR APPROVED)
- 210MM EVATHERM TISSUE-BACK INSULATION (100MM + 110MM), THERMAL CONDUCTIVITY 0.025 W/MK (OR SIMILAR APPROVED)
- ROOF VAPOUR CONTROL LAYER (CB STRATAVAP PART OF ROOFING SYSTEM (OR SIMILAR APPROVED) ADHERED (ROOF VCL TBC)
- 18MM PLYWOOD DECK
- 225MM POSI-JOIST @ 400CTRS (CTRS TBC)
- 15MM GYPSUM SOUNDBLOC PLASTERBOARD + 3MM PAINT SKIM

NOTE:
 External & Party Wall timber battens are at 600 centres
 Internal Walls are at 400 centres

AIR TIGHTNESS NOTES

- ENSURE ALL JOINTS IN THE KINGSPAN NILVENT BREATHER MEMBRANE HAVE 150MM OVERLAP
- ENSURE ALL JOINTS (150MM OVERLAP) IN THE GLIDEVALE BARRIER VAPOUR CONTROL LAYER ARE TAPED USING THE GERBAND 586/587 WHERE REQUIRED AS PER KINGSPAN'S DESIGN
- ENSURE THERE IS A CONTINUITY; VCL ON WALLS IS TAPED TO GLAZING FRAMES WITH TESCON PROFIL INTERNALLY AND WITH PRO CLIMA CONTEGA SOLIDOX EXTERNALLY
- ENSURE THERE IS A CONTINUITY; VCL IS OVERLAPPED WITH BREATHER MEMBRANE AT OPENINGS / WINDOW/DOOR REVEALS
- ENSURE THERE IS A CONTINUITY BETWEEN THE VCL AND CONCRETE SLAB ADHERING VCL WITH ORCON-F
- ENSURE THERE IS A CONTINUITY BETWEEN THE VCL AND SEPARATING LAYER BELOW UPH RETURNED UP AT PERIMETER JUNCTION WALL/FLOOR - TAPE OVERLAP WITH PROCLIMA COMPEGO TAPE
- GENERALLY ENSURE THAT ALL SERVICES PENETRATIONS (MFP) ARE SEALED USING THE PRO CLIMA ROFLX GROMMETS TO SUIT SIZE (OR SIMILAR APPROVED)



W4 - EXTERNAL LOAD-BEARING PARTITION PARAPET WALL - THICKNESS 264MM

- SINGLE-PLY MEMBRANE ALWITRA EVALON ADHERED APPLICATION (OR SIMILAR APPROVED), TURNED OVER THE UPSTAND PARAPET AND OVER THE TOP OF IT
- KINGSPAN NILVENT BREATHER MEMBRANE (OR SIMILAR APPROVED), OVERLAP JOINTS BY 150MM
- 18MM PLYWOOD
- 89 X 45 MM TIMBER STUDS WITH 80MM KINGSPAN K112 FRAMING BOARD 0.019 W/MK (OR SIM. APPRV.)
- 50MM CAVITY FILLED WITH 50MM KINGSPAN K112 FRAMING BOARD 0.019 W/MK (OR SIM. APPRV.)
- 89 X 45 MM TIMBER STUDS WITH 80MM KINGSPAN K112 FRAMING BOARD 0.019 W/MK (OR SIM. APPRV.)
- 18MM PLYWOOD
- KINGSPAN NILVENT BREATHER MEMBRANE (OR SIMILAR APPROVED), OVERLAP JOINTS BY 150MM
- SINGLE-PLY MEMBRANE ALWITRA EVALON ADHERED APPLICATION (OR SIMILAR APPROVED), TURNED OVER THE UPSTAND PARAPET AND OVER THE TOP OF IT

NOTE: ALL ROOMS ADJACENT TO INTERNAL STEELS - REFER TO DRAWING: SMGG-109 C2
~~12.5MM BRITISH GYPSUM GYPROC WALLBOARD PLASTERBOARD~~
 - 12.5MM BRITISH GYPSUM FIRELINE PLASTERBOARD 30MINS FIRE RESISTANCE

© CLIVE CHAPMAN ARCHITECTS. SURVEY INFORMATION IS USED UNDER SEPARATE COPYRIGHT LICENCE. REFER TO EXISTING SURVEY DRAWINGS / TITLE BLOCK FOR SURVEYORS DETAILS. ALL DIMENSIONS TO BE CHECKED ON SITE. BRACKETED DIMENSIONS ARE FOR CHECKING AND NOT FOR SETTING OUT PURPOSES. ANY DISCREPANCIES ARE TO BE REPORTED TO THE ARCHITECT BEFORE COMMENCEMENT.

C1 - 16.01.24: BM positioned between SIP and TW55. BM changed to Nilvent. Party walls and partitions updated to Kingspan's specification. W1D spec changed to 50mm TW55. Brick note updated to Danhill.
 C2 - 21.02.24: Internal wall build-up updated. W1C Parapet build-up updated.
 C3 - 19.04.24: Breather membrane tape omitted, and VCL tape updated as per Kingspan's design. Fireline note added as per drawing SMGG 109 C2.
 C4 - 09.07.24: Floor insulation spec changed to Eurothane GP. Timber batten separation noted.

CONSTRUCTION

Project		ST MARY'S GROVE GARAGES, RICHMOND TW9	
Drawing		CONSTRUCTION BUILD UPS	
Drawing No.	Scale	Date	
SMGG - 120 C4	1:5 @A1	09.11.2023	

4 BEL FLE ISLAND
 TWICKENHAM HIDDY
 T W I 3 D Y

TELEPHONE 020 8991 4837
 EMAIL info@ccar.co.uk
 WEBSITE WWW.CCAR.CO.UK

CLIVE CHAPMAN
 ARCHITECTS
 SUSTAINABILITY CONSULTANTS