
Project:

0360 Hampton Pools
High Street
Hampton
TW12 2ST

Date:

18/11/2024

Report:

**Planning Condition
BD13A - MATERIALS**

Revision:

1

WIMSHURST
PELLERITI

The Mews,
6 Putney Common, SW15 1HL

0208 780 2206
info@wp.uk.com
wimshurst-pelleriti.com



BD13A - MATERIALS

Proposed External Materials Palette

The new building elements will be constructed from Cross Laminated Timber (CLT). CLT is an engineered natural building material that is an energy and resource efficient method of building. It provides high thermal and structural performance with fast construction times and is an important contribution to protecting the climate and the environment.

The proposed timber cladding will initially be finished with a light grey coating that allows it to weather into a natural silver grey - providing a material finish that will enrich and reference the immediate woodland context and surrounding foliage.

As a sustainable cladding source the use of timber will help avoid using heavily processed cladding systems.

The existing building envelope will be thermally upgraded insulated using a smooth insulated render to increase the thermal efficiency of the existing building.



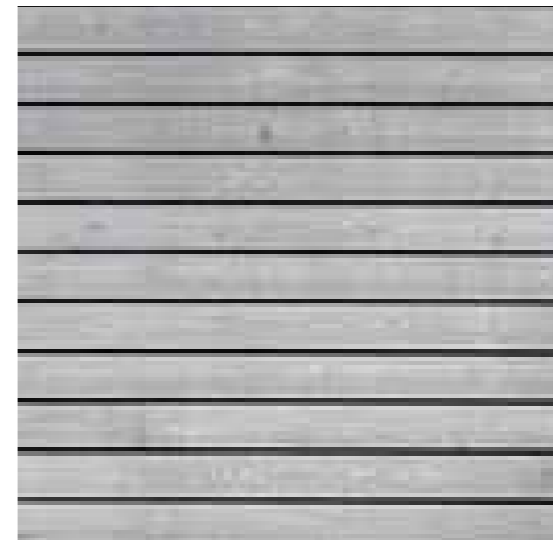
1. Glulam Structure visual finish
Visual Grade Glulam (Douglas Fir or Spruce - dependant on supplier) treated with a water-based medium solid gel stain with very high UV protection to preserve the material's original appearance.

Locations: External columns & beams.



2. Visual plywood soffit
Visual Grade plywood (Douglas Fir or Douglas Fir or Spruce - dependant on supplier) treated with a water-based medium solid gel stain with very high UV protection to preserve the material's original appearance.

Locations: Exposed ceiling soffit panels in



3. Timber cladding
Softwood timber (Thermopine: Thermally modified Scots Pine) with a silicone-based preservative treatment: SiOO:X Light-Grey coating to produce a consistently weathered appearance.

Locations: Cladding and timber fins to external walls.



4. PPC metal
Polyester powder coated or or spray painted Metal in RAL 7016 (Anthracite Grey).

Locations:

- Aluminium Curtain walling mullions
- Door, window & roof light frames
- Rainwater pipes
- Fascias and cappings



5. Glass Balustrades
Glass balustrade in surface-mounted channel with clear 21.5mm laminated & toughened glass and brushed stainless steel handrail



6. Single ply waterproof membrane
Single ply roofing membrane with the appearance of a standing seam roof.

Locations: Gym & Studios building

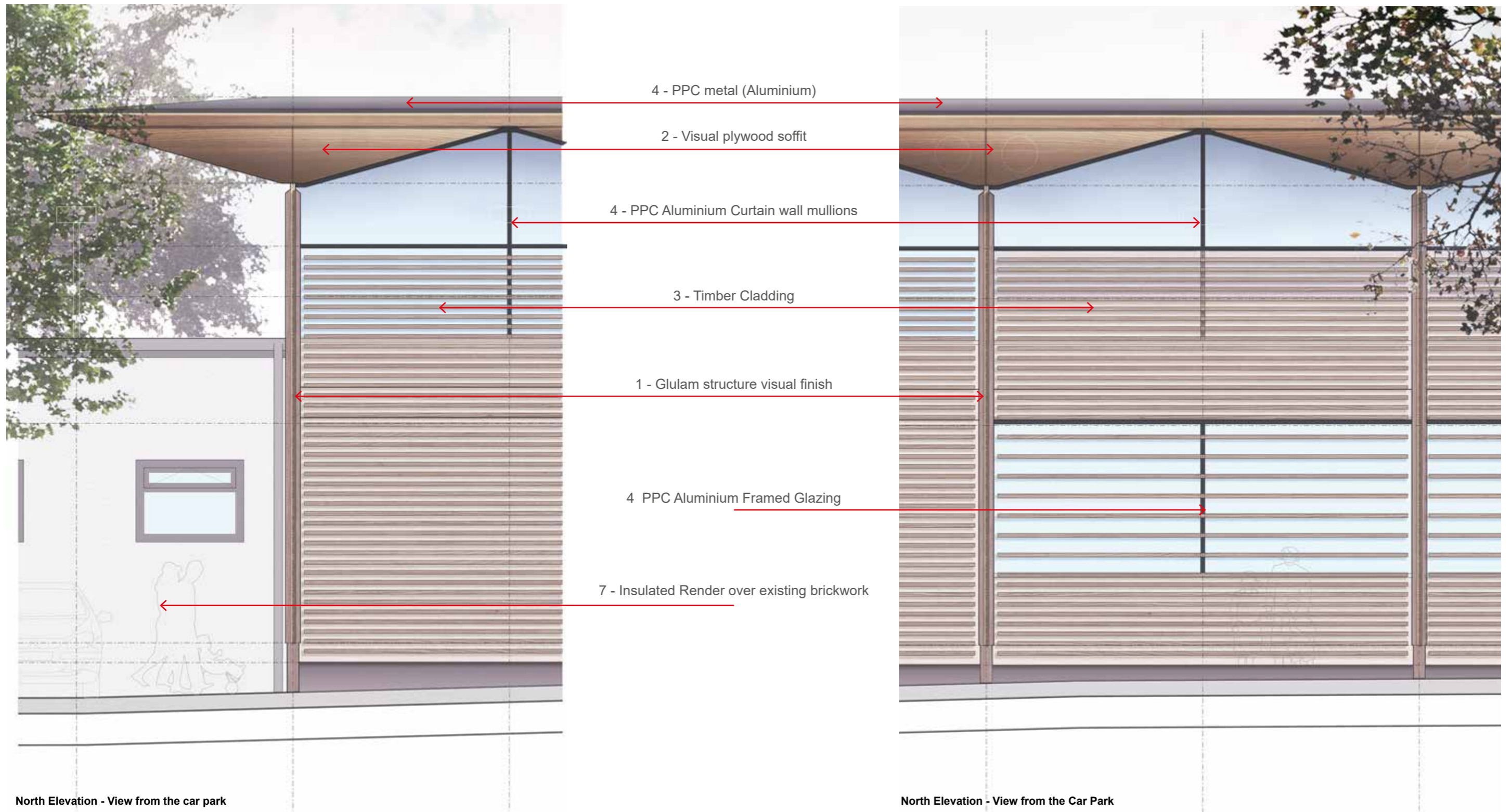


7. Insulated Silicone render system
STO render 2mm grain
Colour:natural white

Locations: Thermal upgrade of existing building

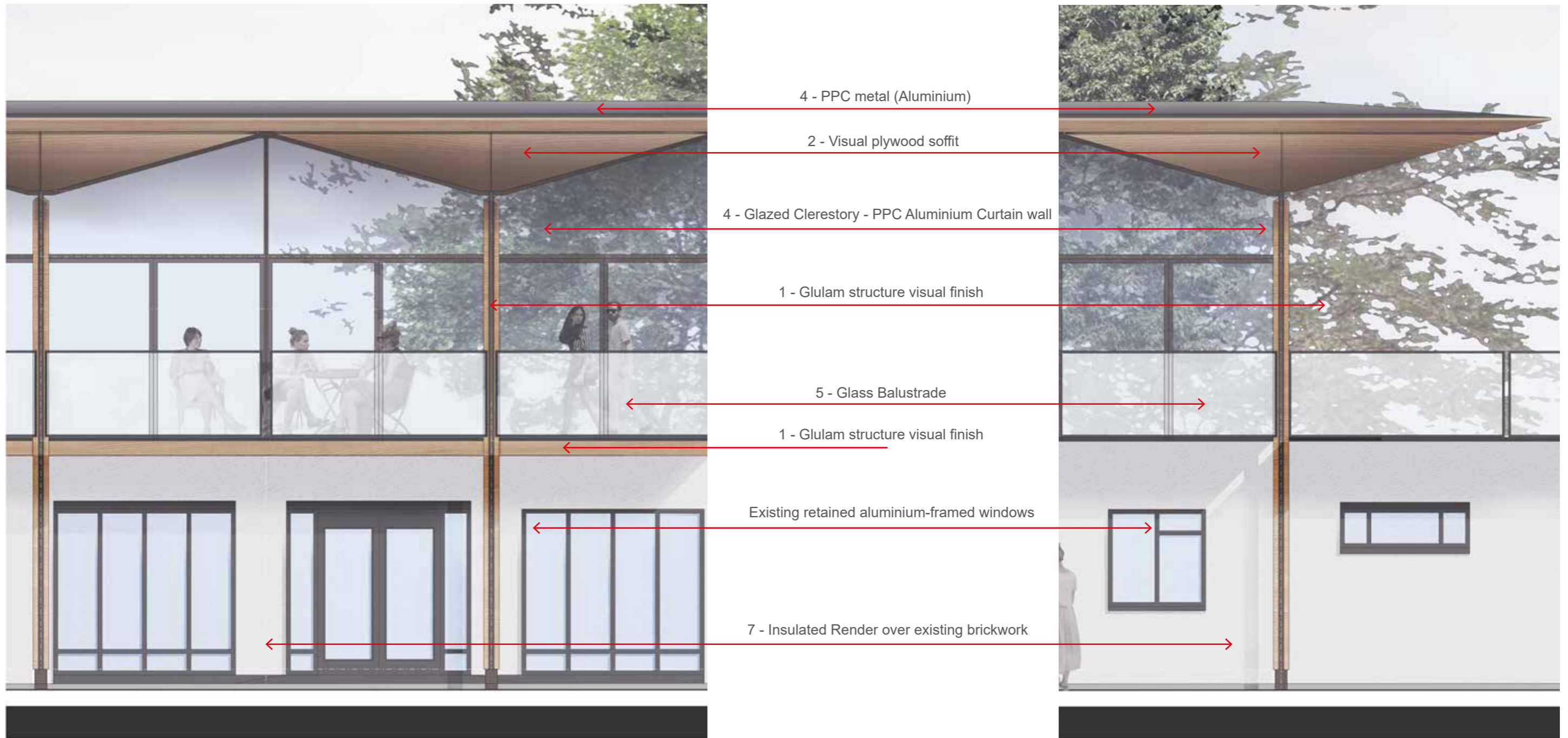
BD13A - MATERIALS

Proposed External Materials Detail Bays (Detail Bays taken from Design & Access Statement submitted with 16/3434/FUL)



BD13A - MATERIALS

Proposed External Materials Detail Bays (Detail Bays taken from Design & Access Statement submitted with 16/3434/FUL)



South Elevation - View from the pool

South Elevation - View from the pool

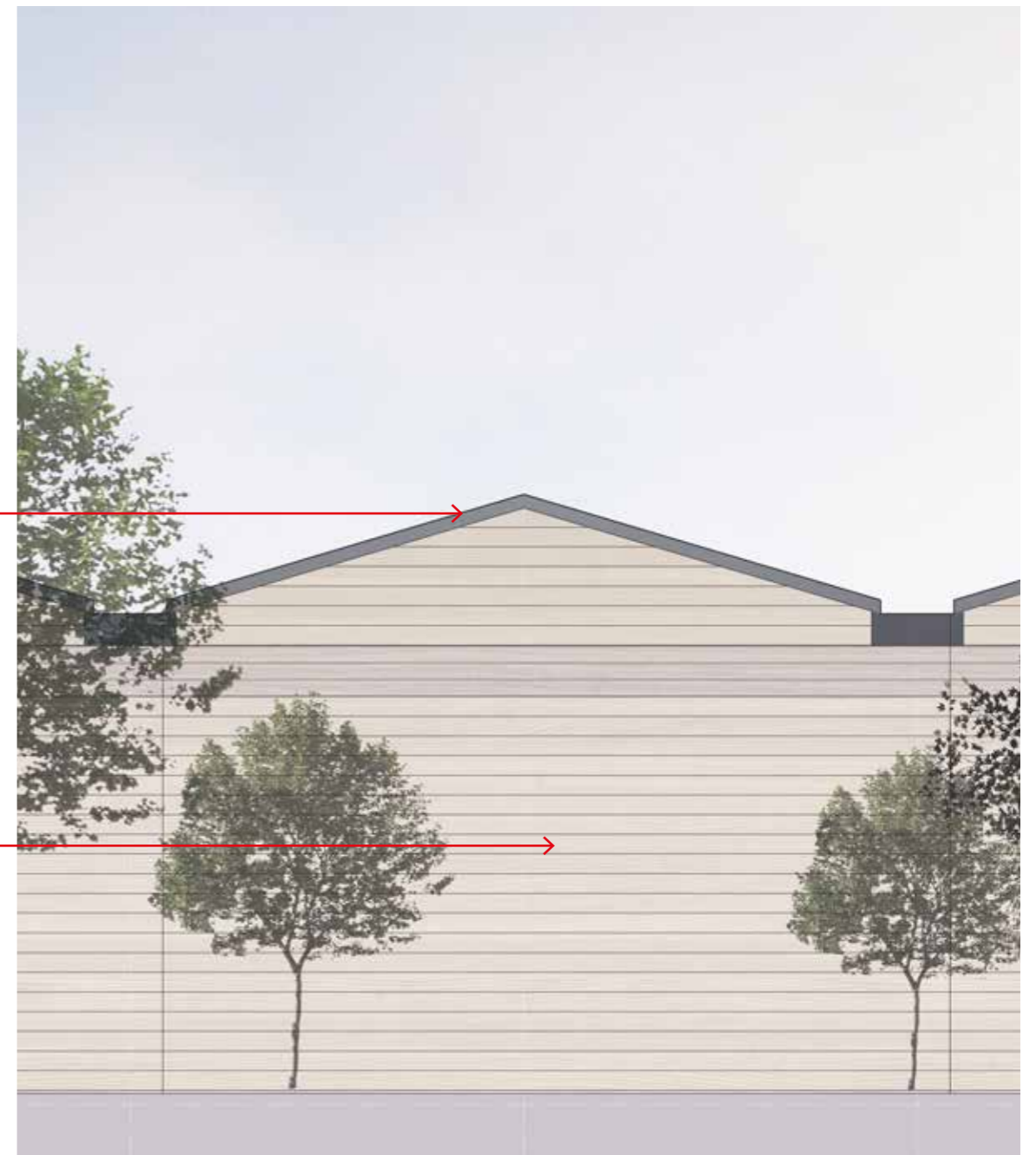
BD13A - MATERIALS

Proposed External Materials Detail Bays (Detail Bays taken from Design & Access Statement submitted with 16/3434/FUL)



East Elevation - View from the pool

- PPC Aluminium fascia
- 3 - Timber fins
- 1 - Glulam structure visual finish
- 3 - Timber cladding
- 4 - PPC Aluminium Curtain wall
- 3 - Timber cladding



West Elevation - View from the service access

BD13A - MATERIALS

Proposed External Materials
External Surfaces



Access road: Tarmac



Car parking bays:
Reinforced Gravel (permeable)



New paved areas: Concrete block paving
(Marshall's Piora Permeable Paving)

Rev1-18/11/24



Existing concrete paving slabs to remain



Area of new paving using reclaimed or
matching existing concrete paving

