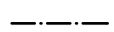
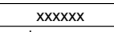





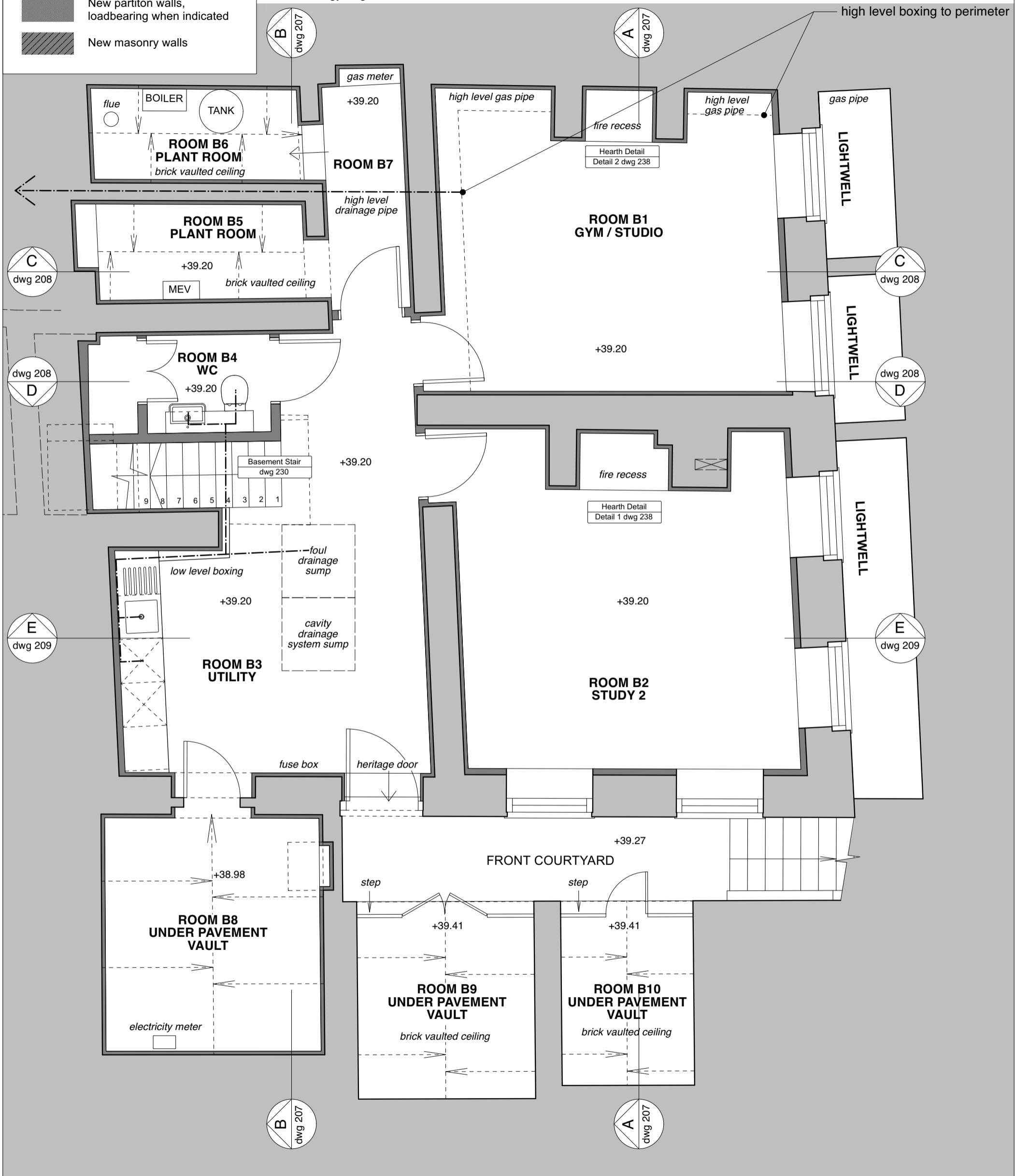
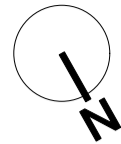
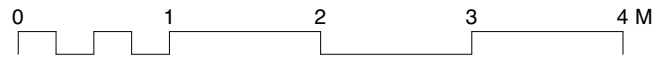
**KEY**

-  Foul drainage runs
-  Drawing reference
-  Existing walls
-  New partition walls, loadbearing when indicated
-  New masonry walls

These drawings should be read alongside the structural proposals by MNP engineering accompanying this application.

Also refer to the following architectural strategy drawings;

- Fire Strategy dwg 240
- Ventilaition Strategy dwg 241
- Ceiling Strategy dwg 242
- Heating and Electrical Strategy dwg 243
- Wall Strategy dwg 245



REVISION SUMMARY	DATE	REVISION