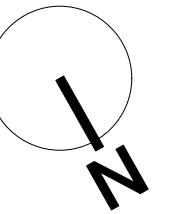


# FIRE STRATEGY DRAWING

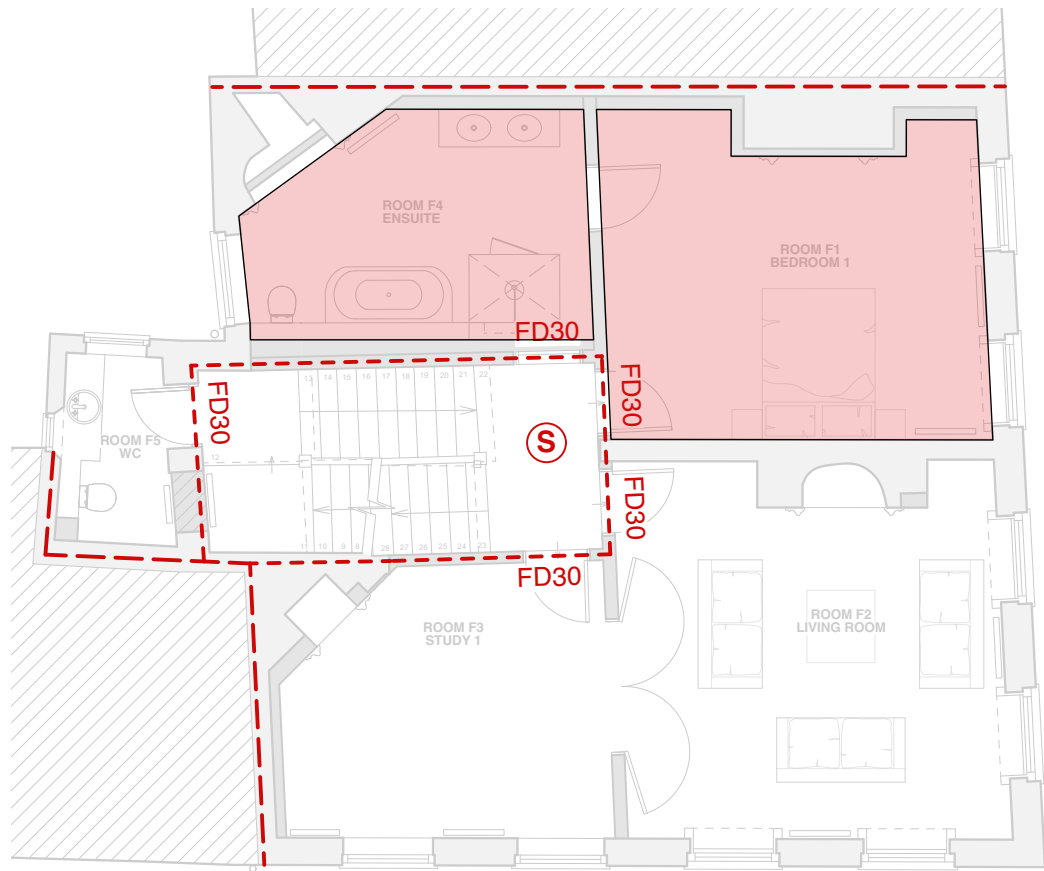
To be read with the fire statement



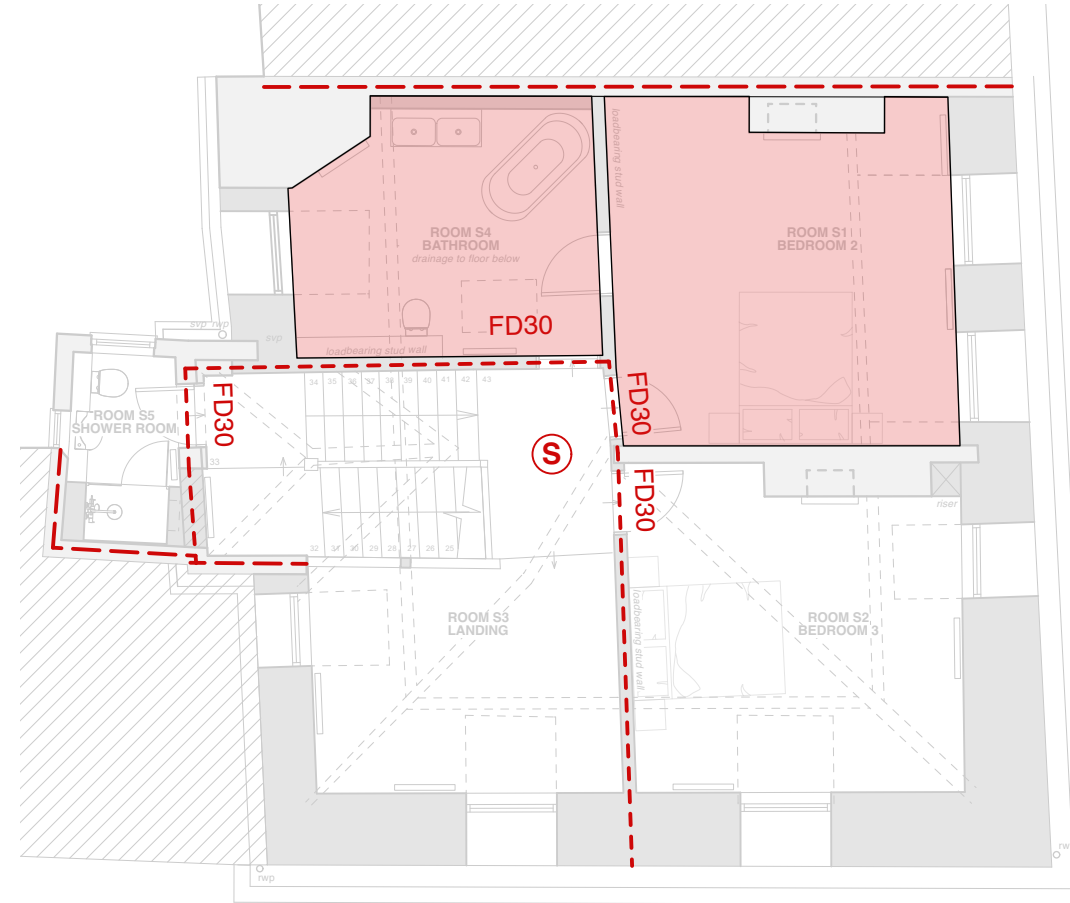
### FIRE STRATEGY KEY

- Final escape
- 30min fire wall
- 60min fire wall
- Smoke detector
- Heat detector
- 30 minute fire door
- 60 minute fire ceiling

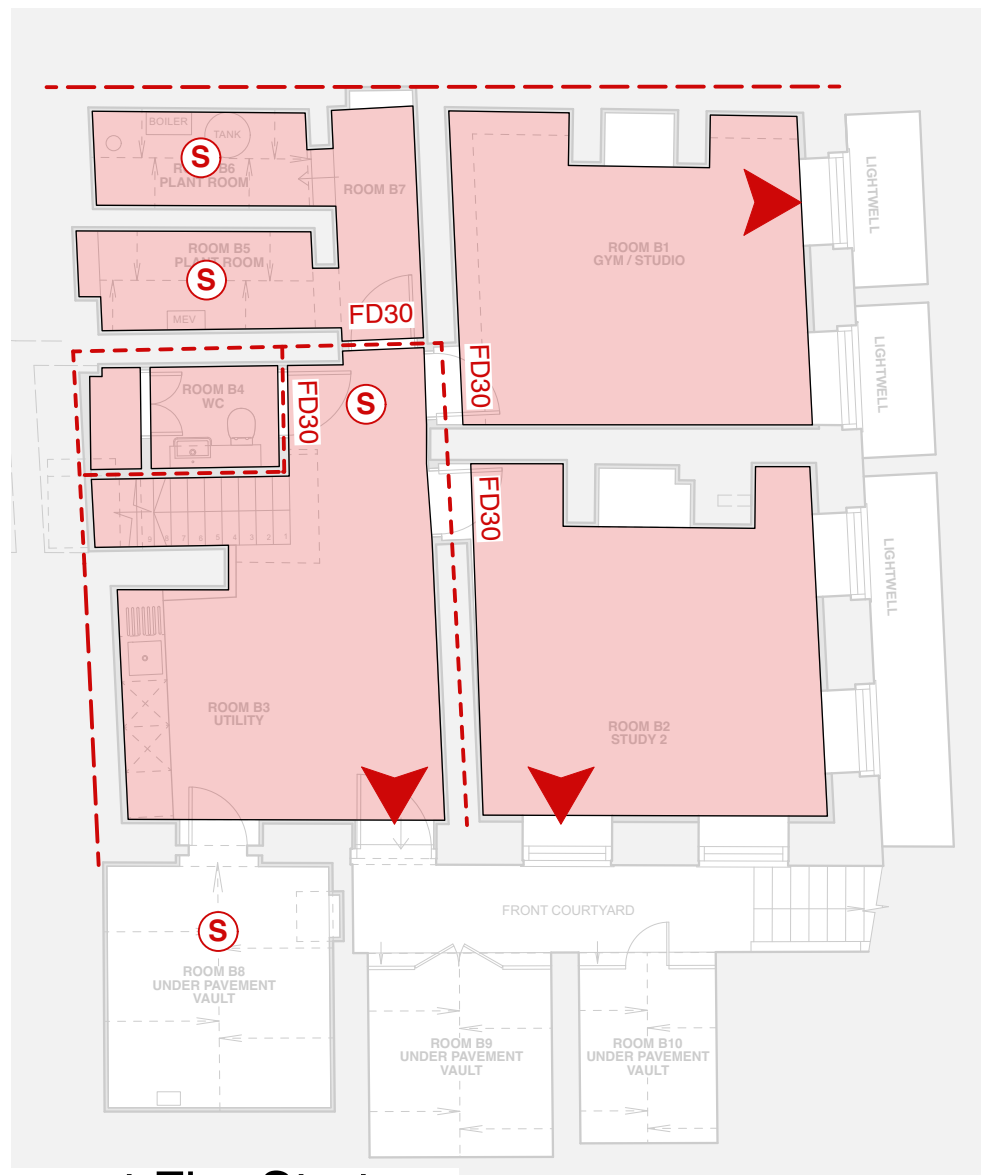
- General Notes
1. The Fire Strategy is dependent upon the installation and maintenance (where appropriate) of all of the designed measures.
  2. Pipe penetrations of fire resisting construction should be sealed with Rockwool Firepro® High Expansion Intumescent Sealant
  3. Linear gaps to be filled with Rockwool Firepro® Acoustic Intumescent Sealant.
  4. Refer also to the ASFP On-site guide to installing fire-stopping



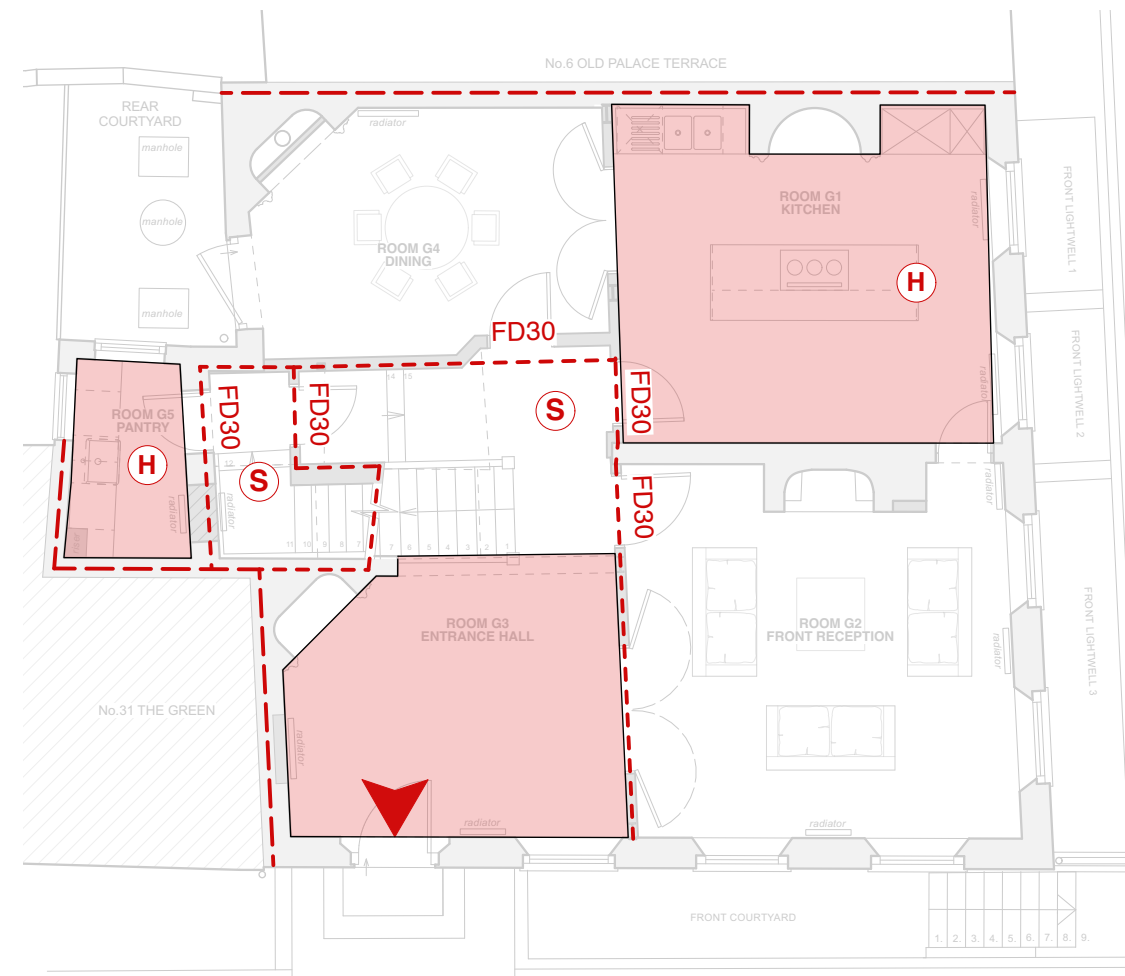
First Floor Fire Strategy



Second Floor Fire Strategy



Basement Fire Strategy



Ground Floor Fire Strategy

REVISION SUMMARY	DATE	REVISION



First Floor, 43-45 Park Street  
Bristol  
BS1 5NL  
mail@shuarchitects.uk  
0117 248 2688

Project number  
**2117**

Project  
**32 The Green  
Richmond  
TW9 1LX**

Status  
**PLANNING**

Use figured dimensions only. Only build from drawing marked for 'Construction'.

Drawing Title  
**STRATEGY DRAWINGS  
Fire Strategy**

Drawn by  
**CH**

Date  
**Nov 2024**

Scale  
**1:100@A2**

Drawing number  
**240**

Revision